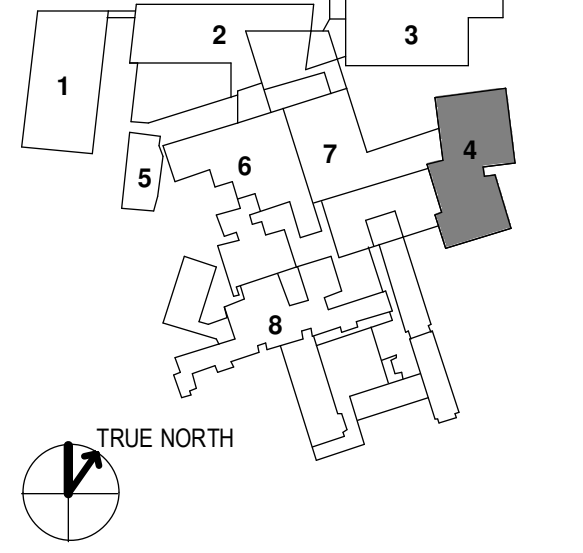


- 1 - GILMAN GARAGE
- 2 - CONGRESS STREET
- 3 - VISITOR GARAGE
- 4 - EAST TOWER
- 5 - CENTRAL UTILITY PLANT
- 6 - BEAN BUILDING
- 7 - RICHARDS BUILDING
- 8 - MAINE GENERAL BUILDING

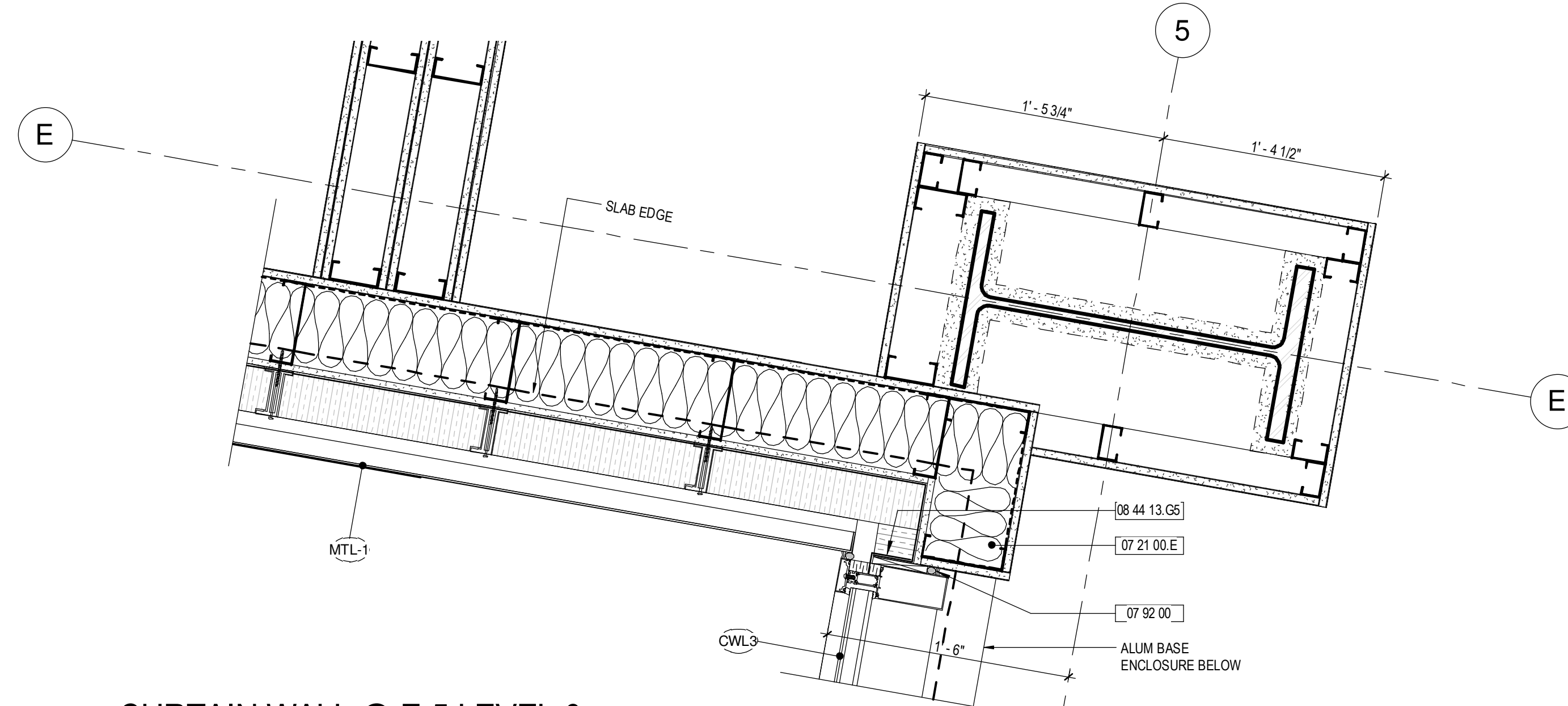


NO	ISSUE	DATE
1	ADDENDUM NO. 1	3/22/18

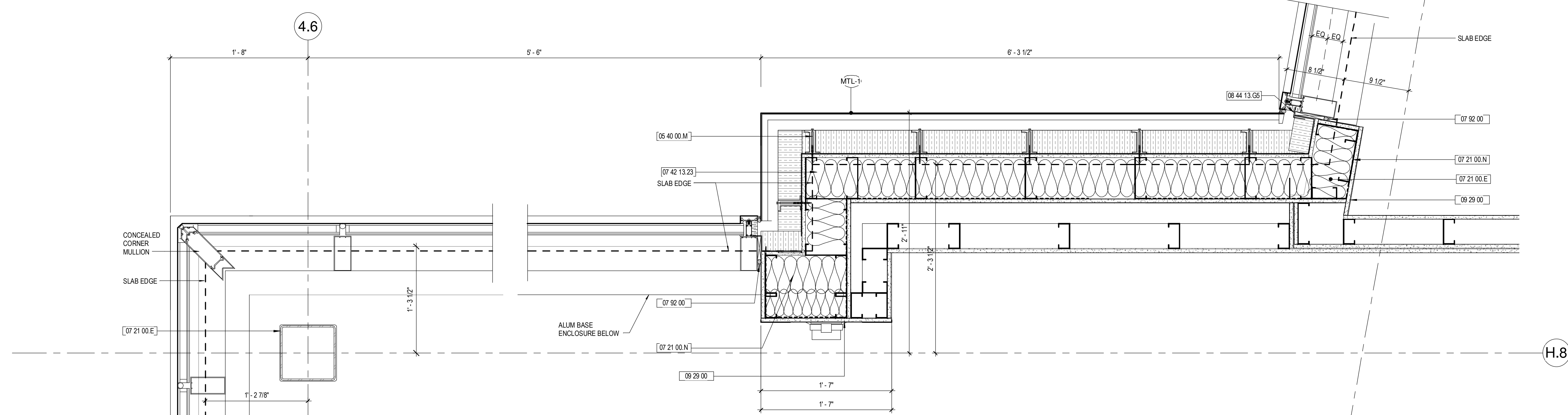
Job Number: 152181.000
Drawn: TEAM
Checked: JK
Approved: JK

KEYNOTES

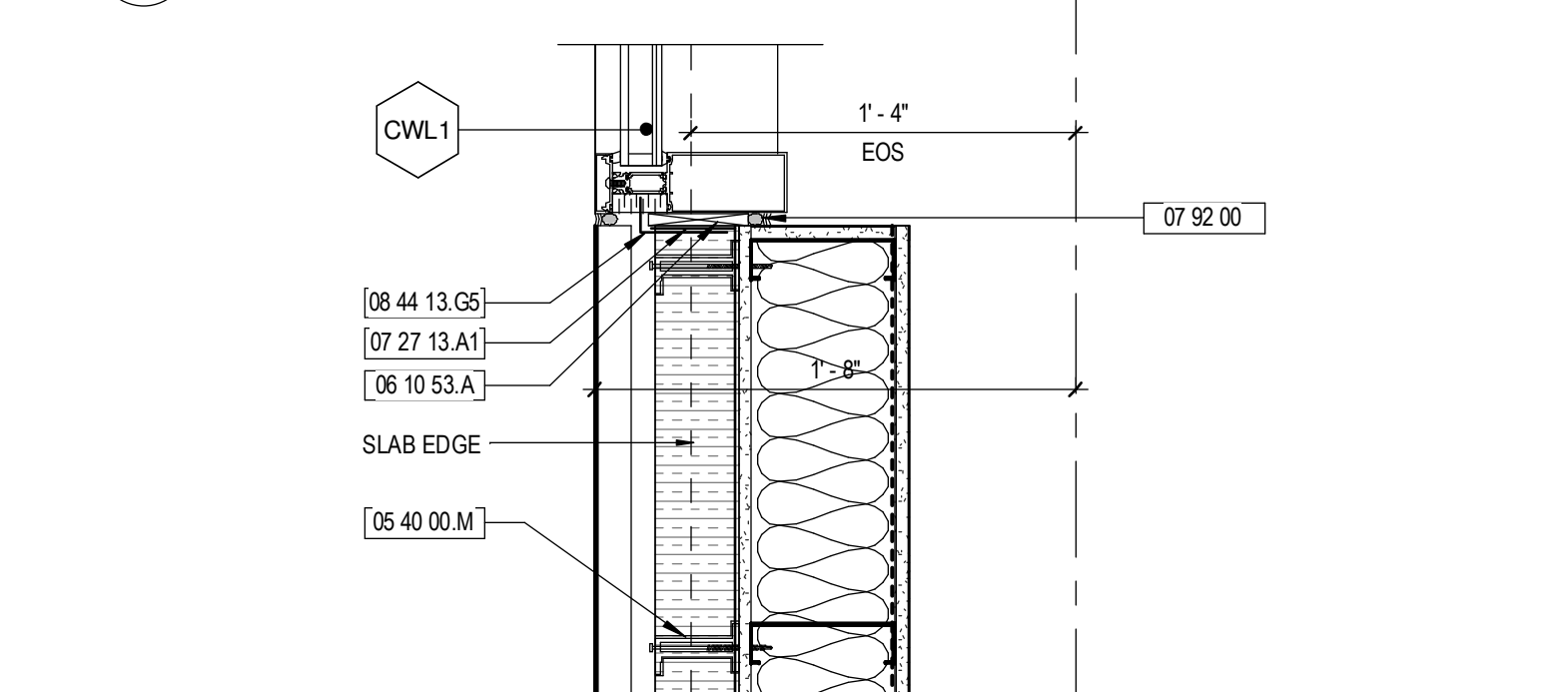
- 05 40 00 COLD-FORMED METAL FRAMING
- 05 40 00.A CMF
- 05 40 00.M FIBERGLASS THERMAL CLIP
- 06 10 53.A PRESSURE-TREATED WOOD BLOCKING
- 07 21 00.E MINERAL WOOL BATT
- 07 21 00.N VAPOR RETARDERS
- 07 27 13.A1 NON-PERMEABLE MEMBRANE AIR BARRIER
- 07 42 13.19.A SILICONE SEALANT
- 07 42 13.23 METAL COMPOSITE MATERIAL WALL PANELS
- 07 81 23 INTUMESCENT FIREPROOFING
- 07 92 00 JOINT SEALANTS
- 07 95 00 EXPANSION CONTROL
- 08 44 13.05 SILICONE FLASHING SHEET
- 09 29 00 GYPSUM BOARD



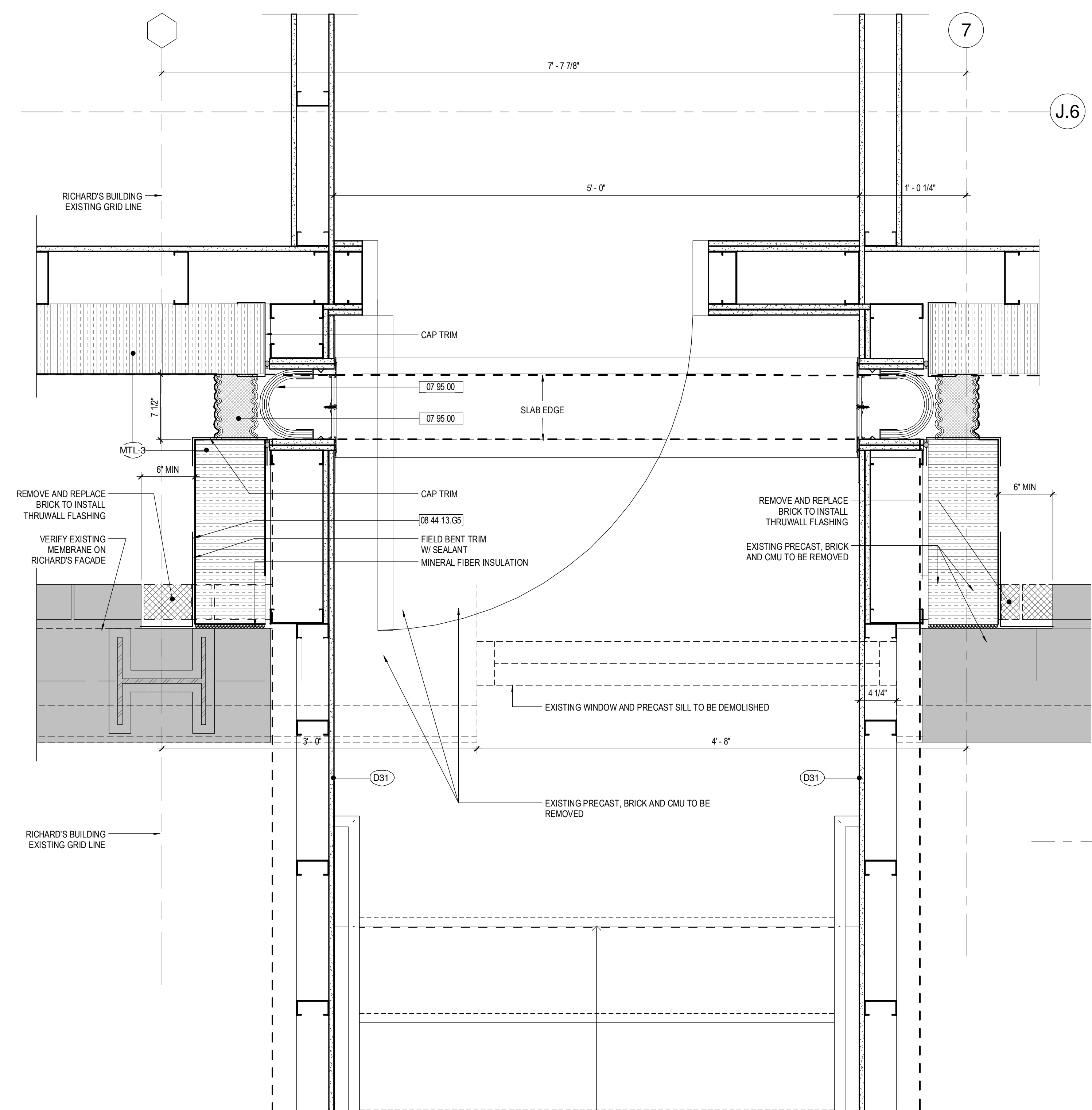
6 CURTAIN WALL @ E-5 LEVEL 6
1 1/2" = 1'-0"



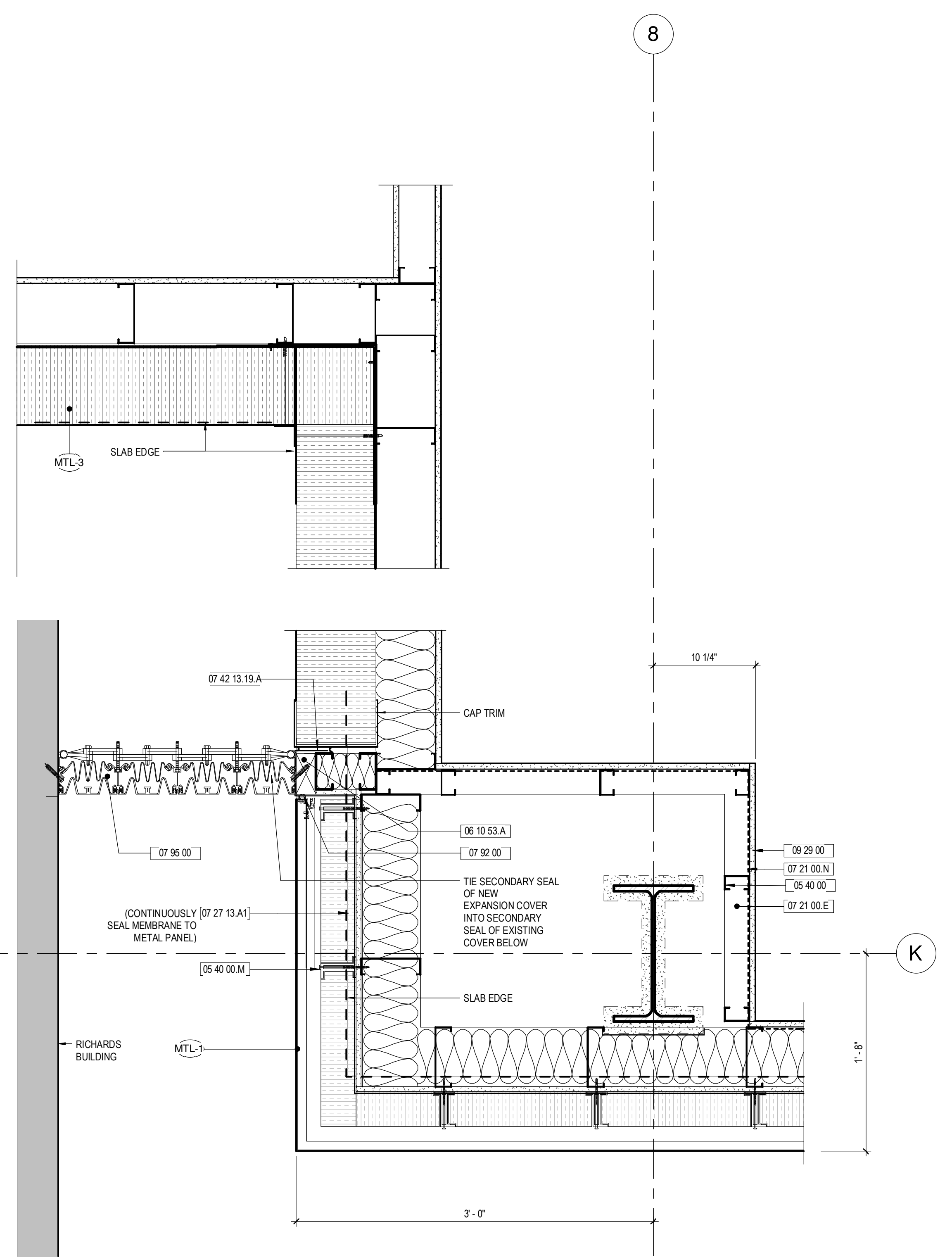
5 METAL PNL AND CURTAIN WALL @ H.8-4.6 LEVEL 6
1 1/2" = 1'-0"



4 METAL PNL AND WINDOW @ J.6-4.6
1 1/2" = 1'-0"



2 CONNECTION TO RICHARDS - LEVEL 06
1 1/2" = 1'-0"



1 METAL PNL @ K-8 LEVEL 06
1 1/2" = 1'-0"

3 METAL PNL @ GRID J.6-4.6 LEVEL 06
1 1/2" = 1'-0"