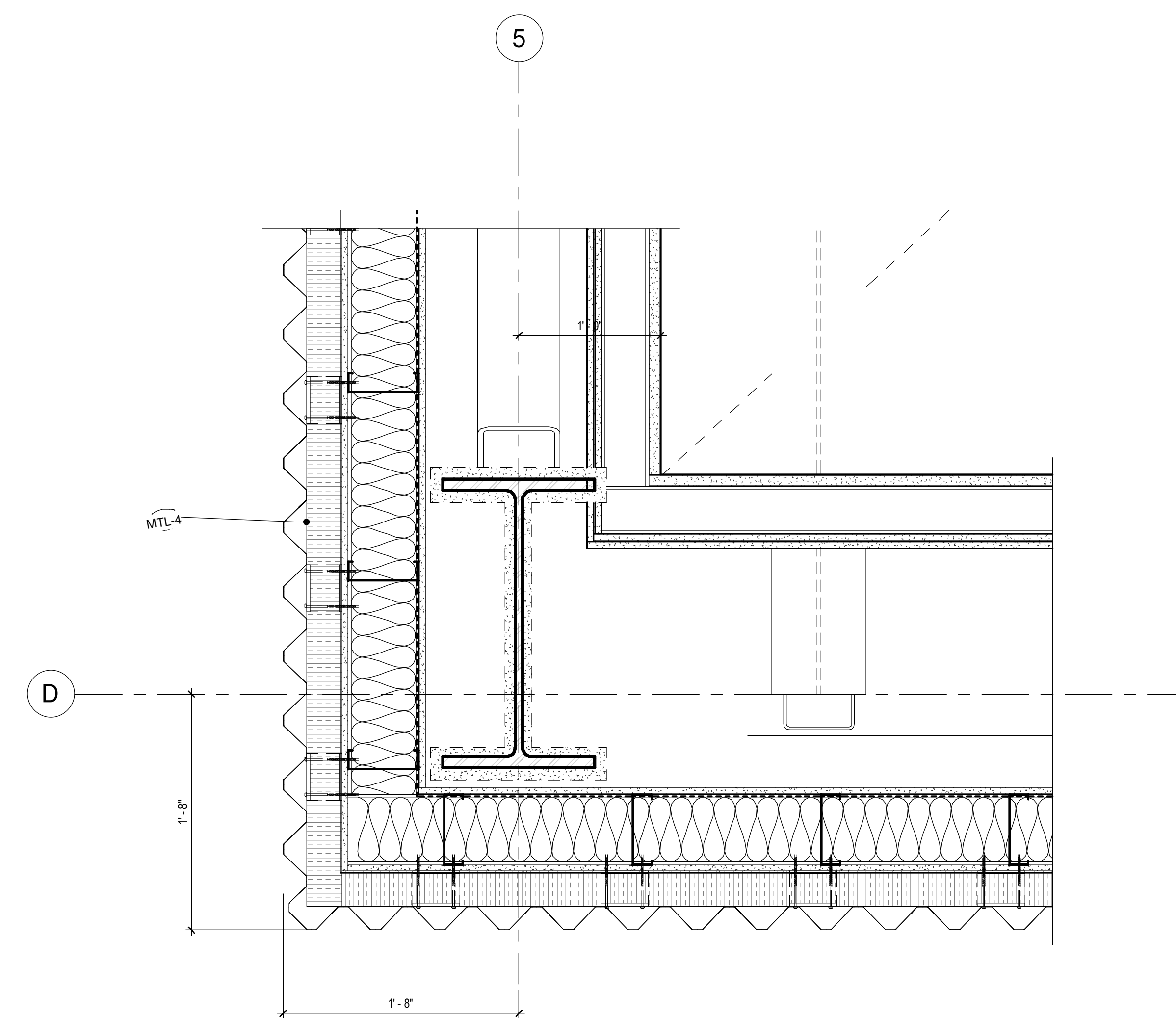
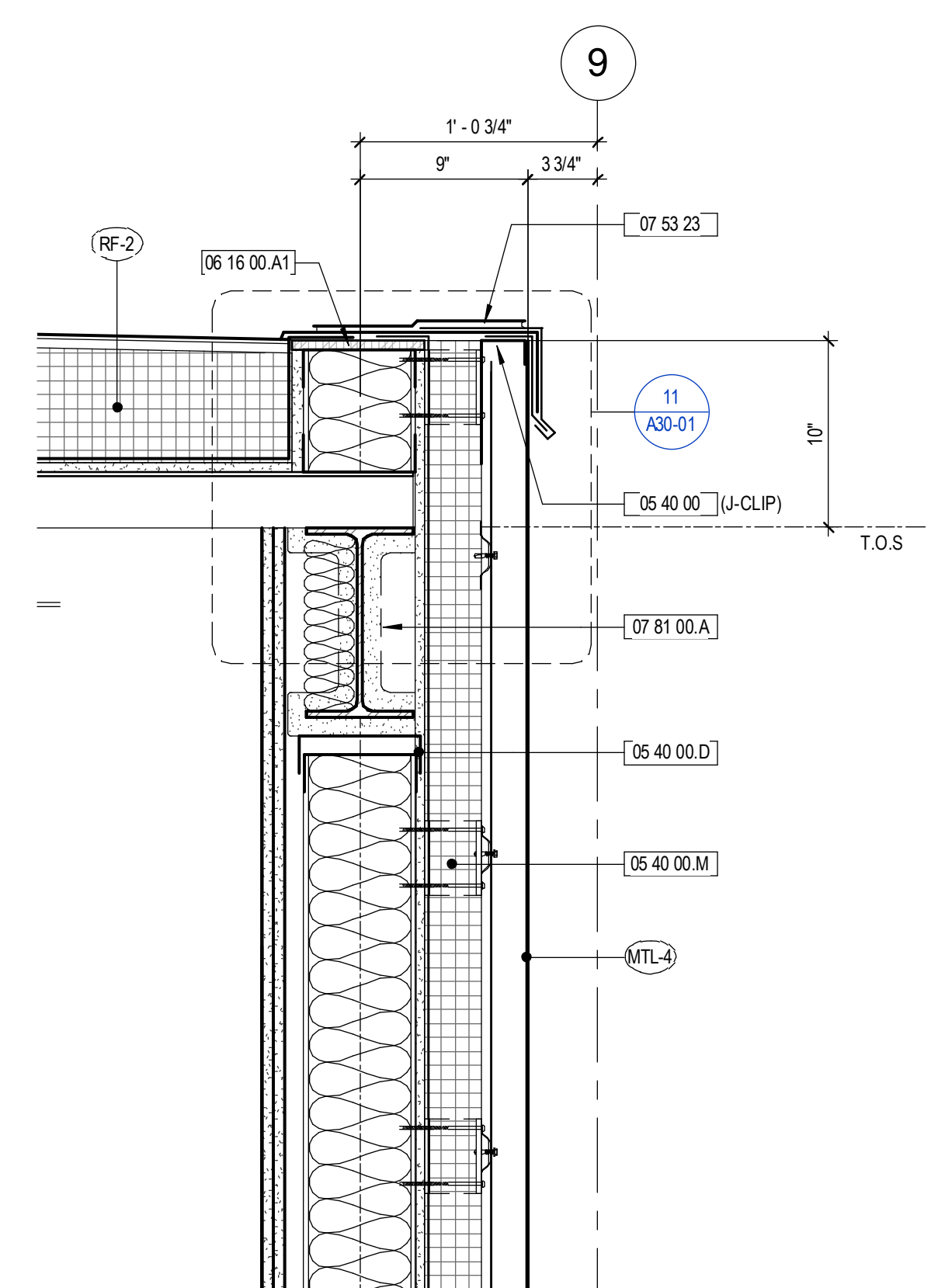


KEYNOTES

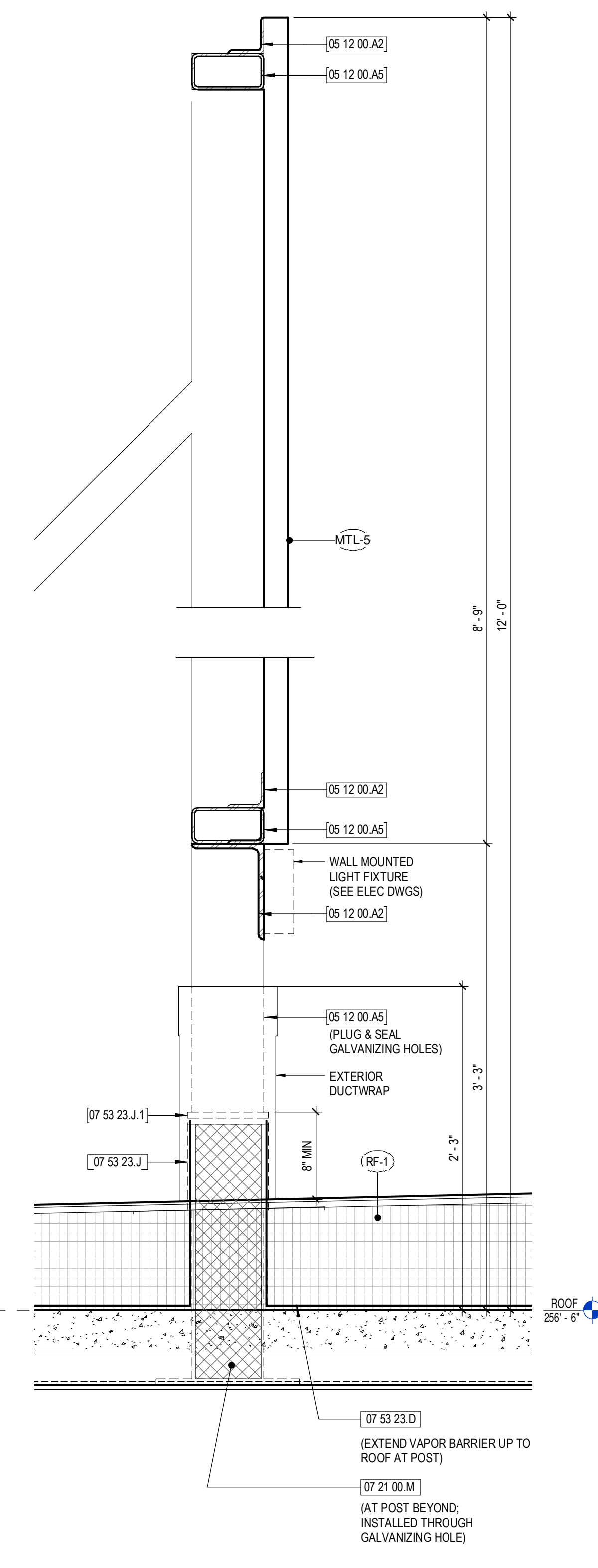
- 05 12 00.A2 STL ANGLE
- 05 12 00.A3 STL PL
- 05 12 00.A5 STL TUBE
- 05 40 00 COLD-FORMED METAL FRAMING
- 05 40 00.D VERTICAL DEFLECTION CLIP
- 05 40 00.M FIBERGLASS THERMAL CLIP
- 05 50 00.R2 STL TUBE
- 06 10 53.A PRESSURE-TREATED WOOD BLOCKING
- 06 16 00.A1 FIRE-RETARDANT TREATED PLYWOOD
- 07 21 00.A POLYISO BOARD INSUL
- 07 21 00.M CLOSED-CELL SPRAY POLYURETHANE FOAM
- 07 42 13.13.E SILL FLASHING
- 07 53 23 ETHYLENE-PROPYLENE-DIENE-MONOMER (EPDM) ROOFING
- 07 53 23.D VAPOR BARRIER
- 07 53 23.F GLASS MAT COVER BD
- 07 53 23.J PIPE BOOTS
- 07 53 23.J.1 SST BOOT CLAMP
- 07 62 00.B1 SST FLASHING
- 07 72 00 INSULATED ROOF CURB
- 07 81 00.A SPRAYED FIRE RESISTIVE MATERIAL



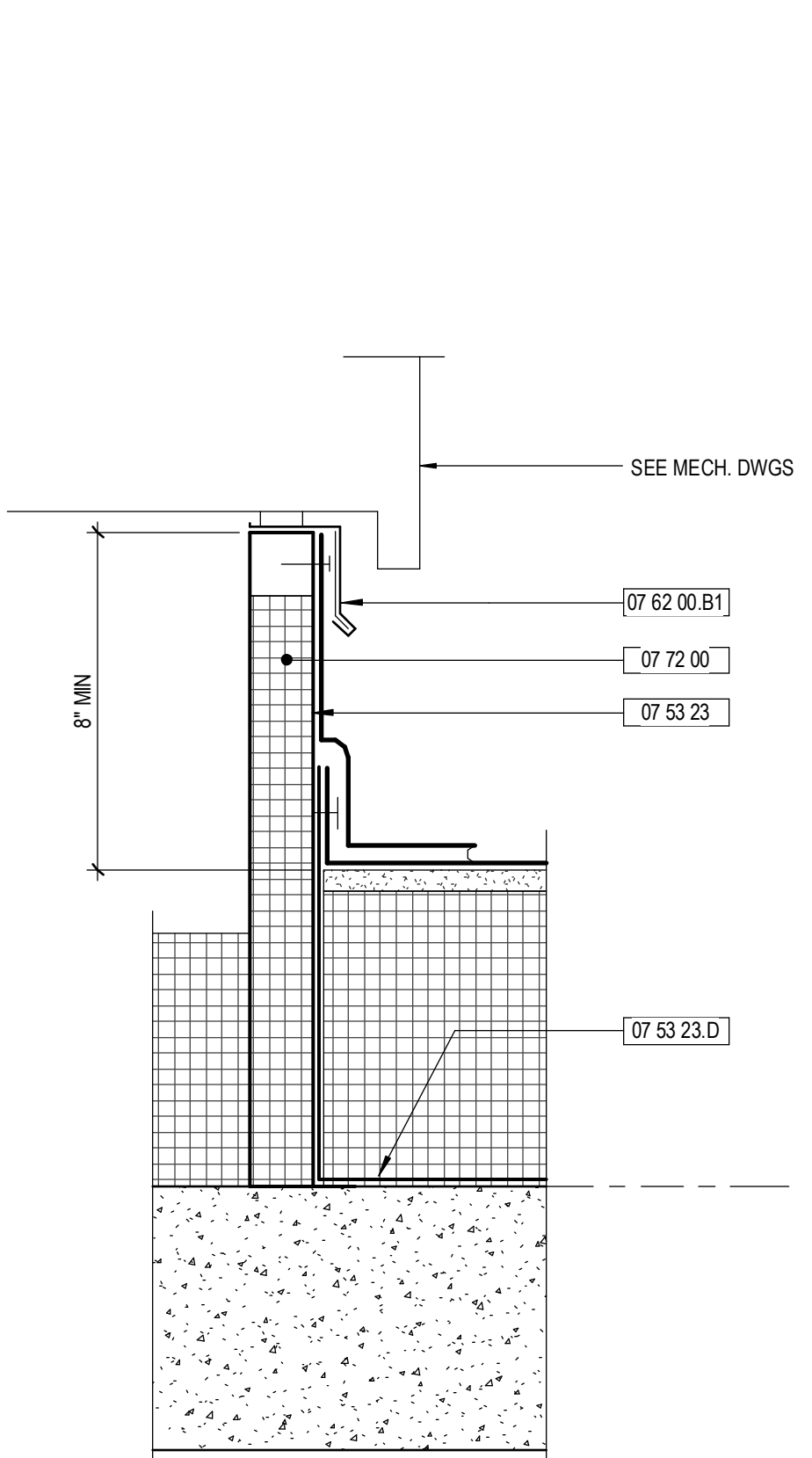
5 CORRUGATED ALUM WALL AT D-5
1 1/2" = 1'-0"



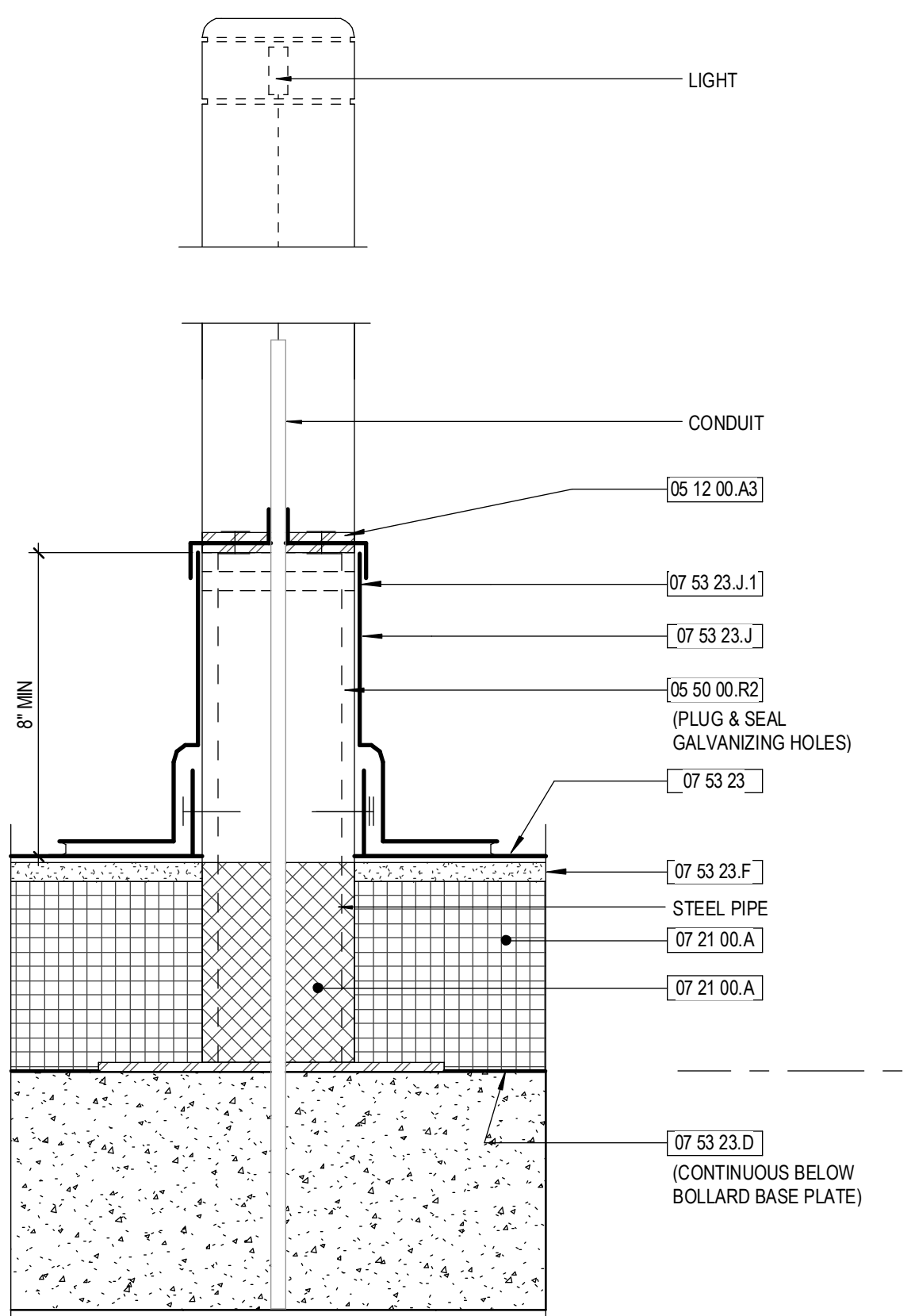
3 STAIR 43 HEADHOUSE - PARAPET
1 1/2" = 1'-0"



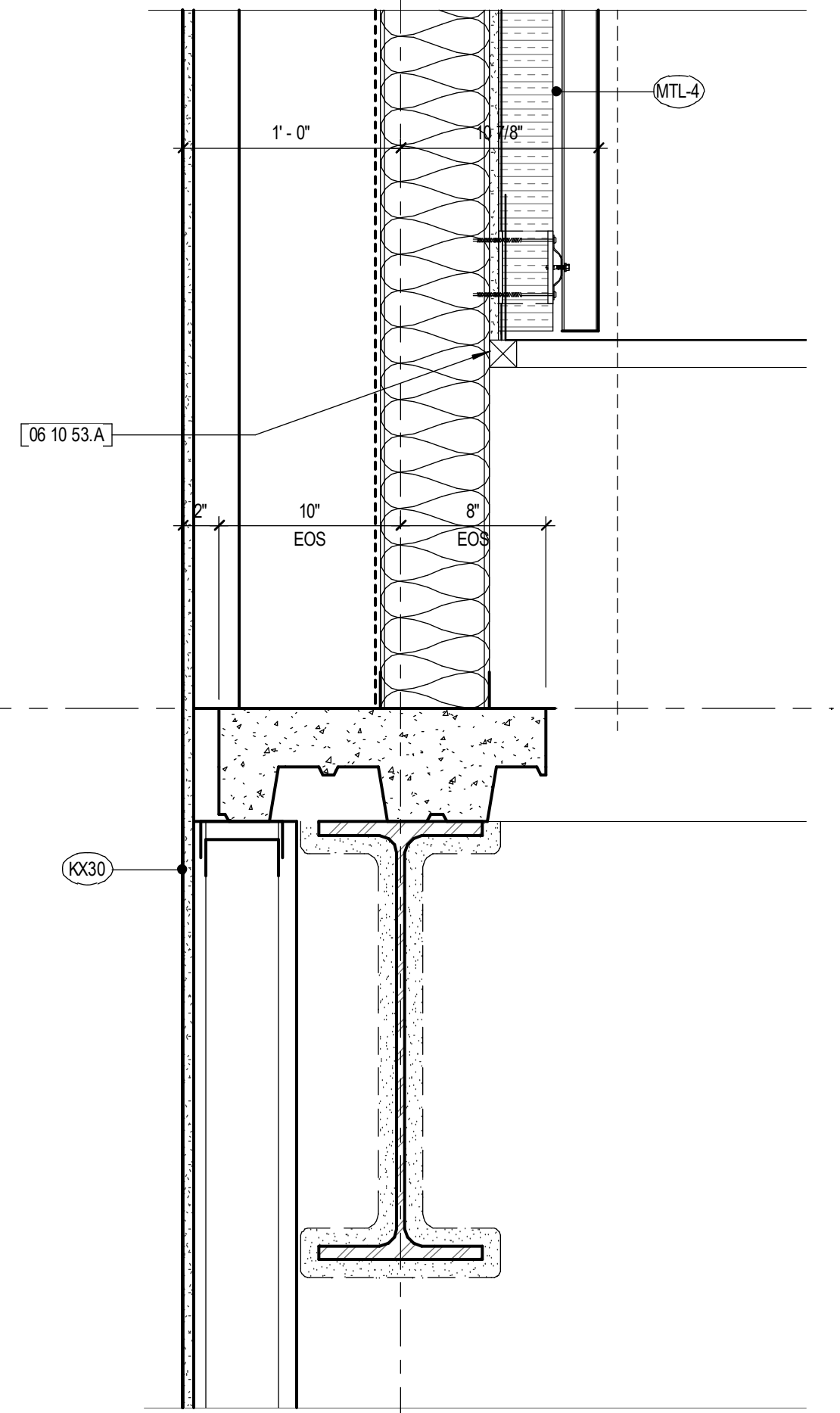
1 ROOF SCREEN
1 1/2" = 1'-0"



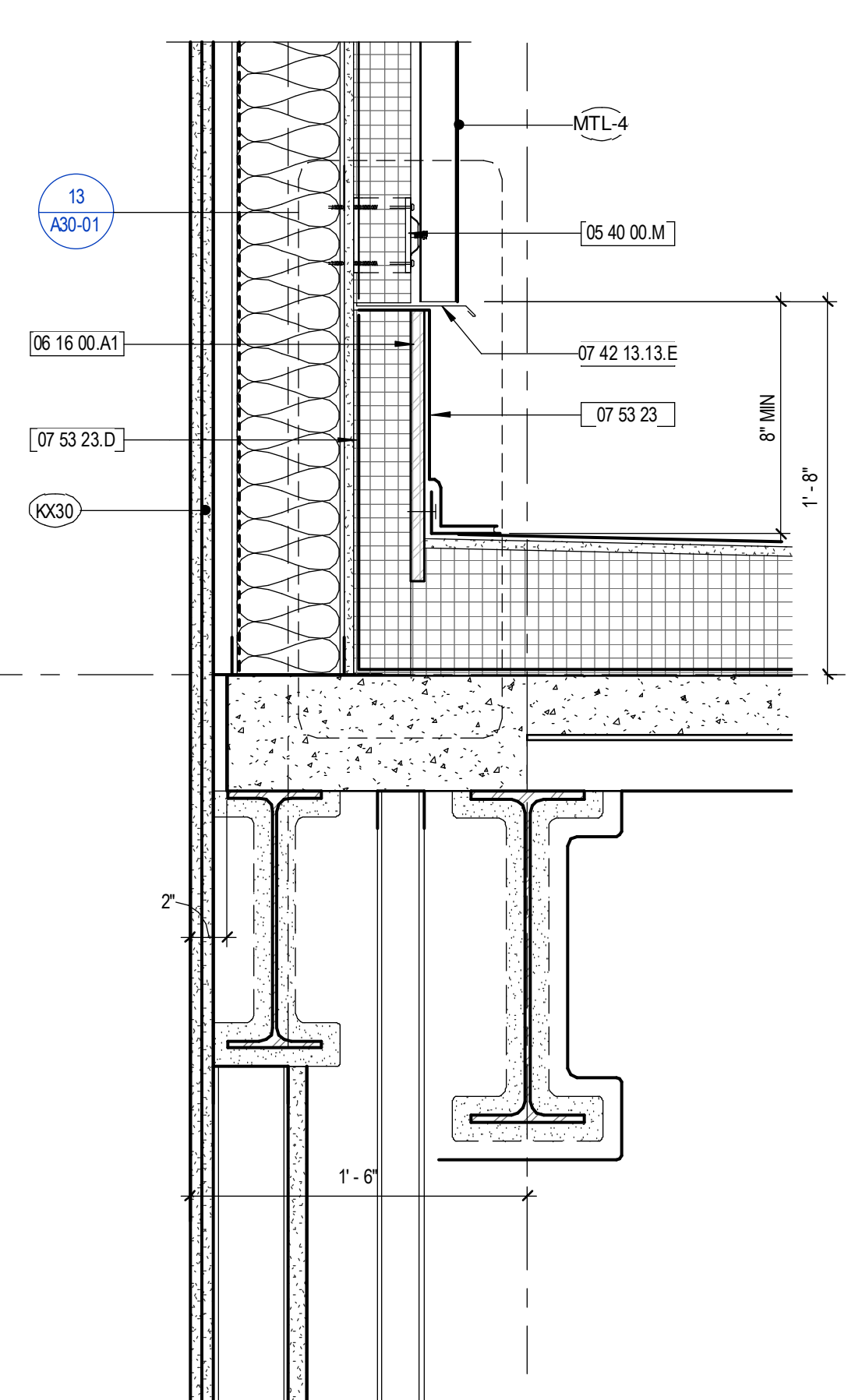
6 ROOF CURB
3" = 1'-0"



5 LIGHT BOLLARD
3" = 1'-0"



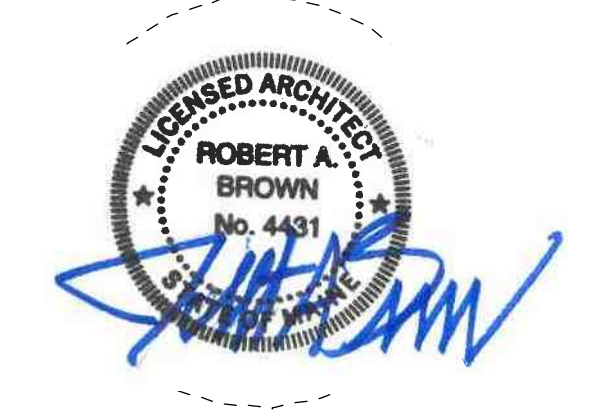
4 DUCT PENETRATION AT ROOF
1 1/2" = 1'-0"



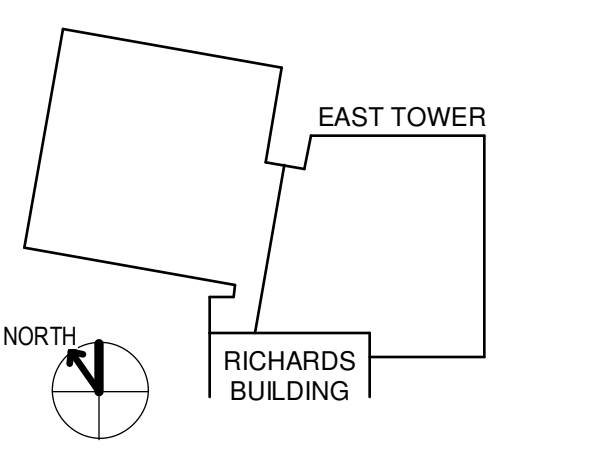
2 STAIR 43 HEADHOUSE - ROOF
1 1/2" = 1'-0"

PROJECT TITLE

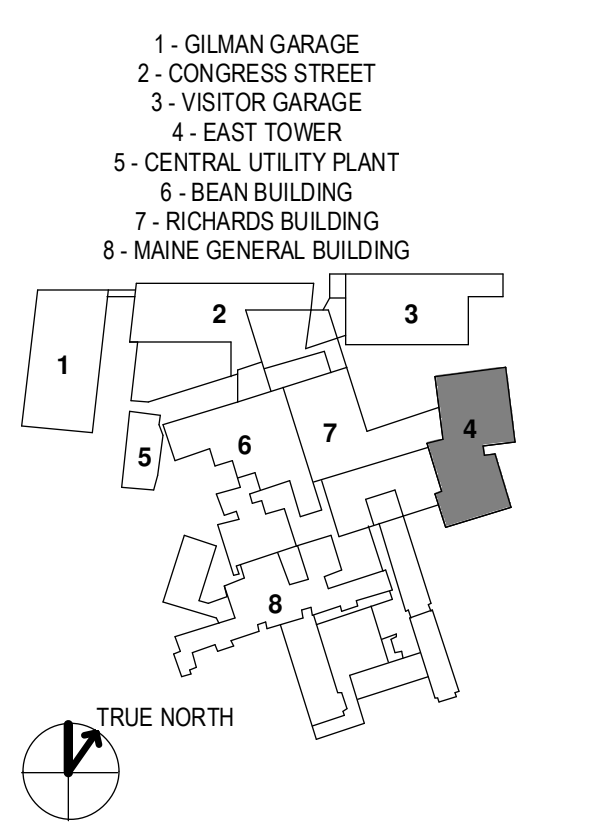
East Tower 6 & 7 Addition
22 Bramhall Street
Portland ME 04102



KEY PLANS



OVERALL KEY PLAN



CONSTRUCTION DOCUMENTS
JANUARY 26, 2018

NO	ISSUE	DATE
Job Number	152181.000	
Drawn	TEAM	
Checked		
Approved	JK	

TITLE
EXTERIOR SECTION DETAILS - ROOF

SHEET NUMBER

A32-06