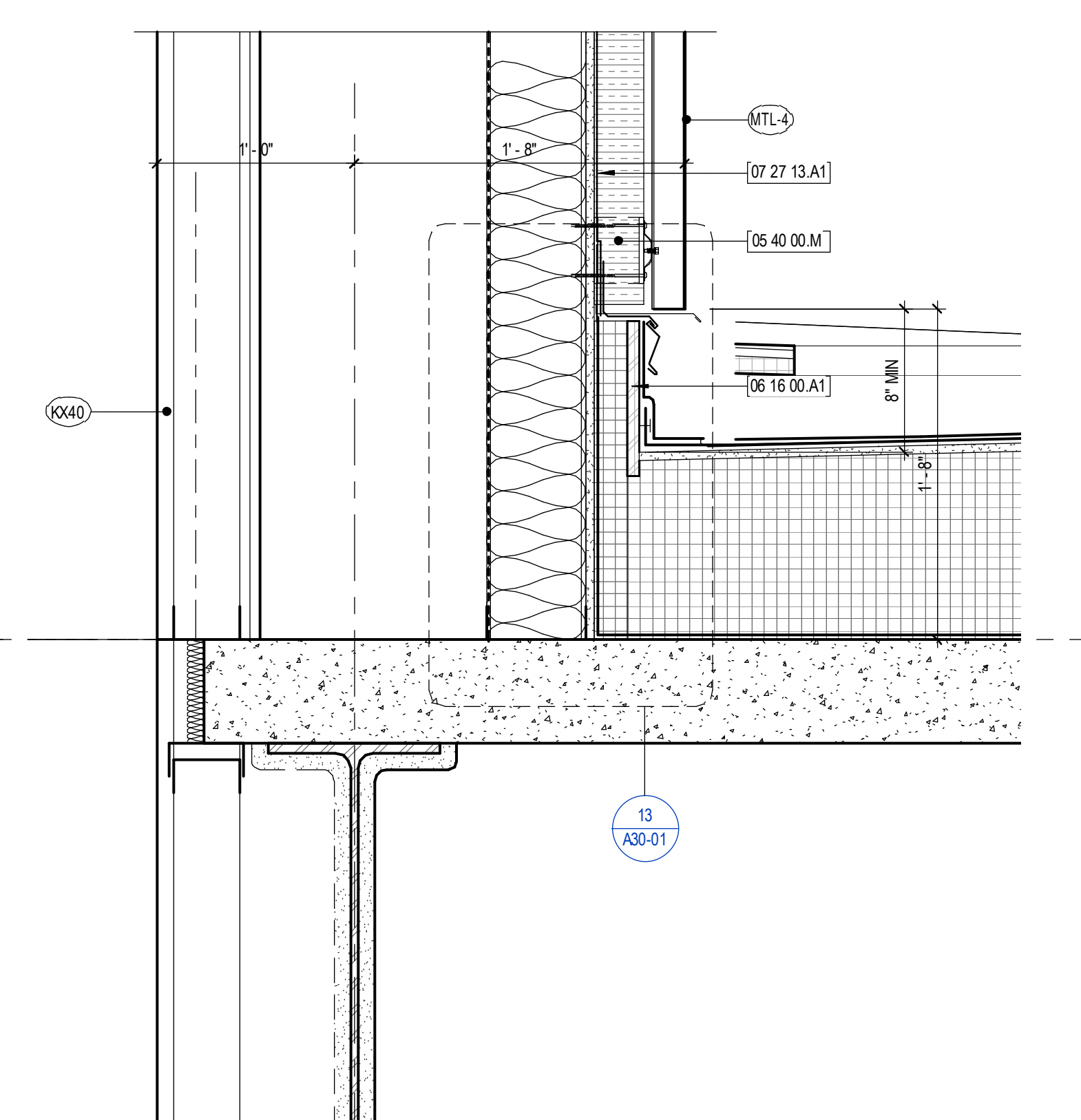
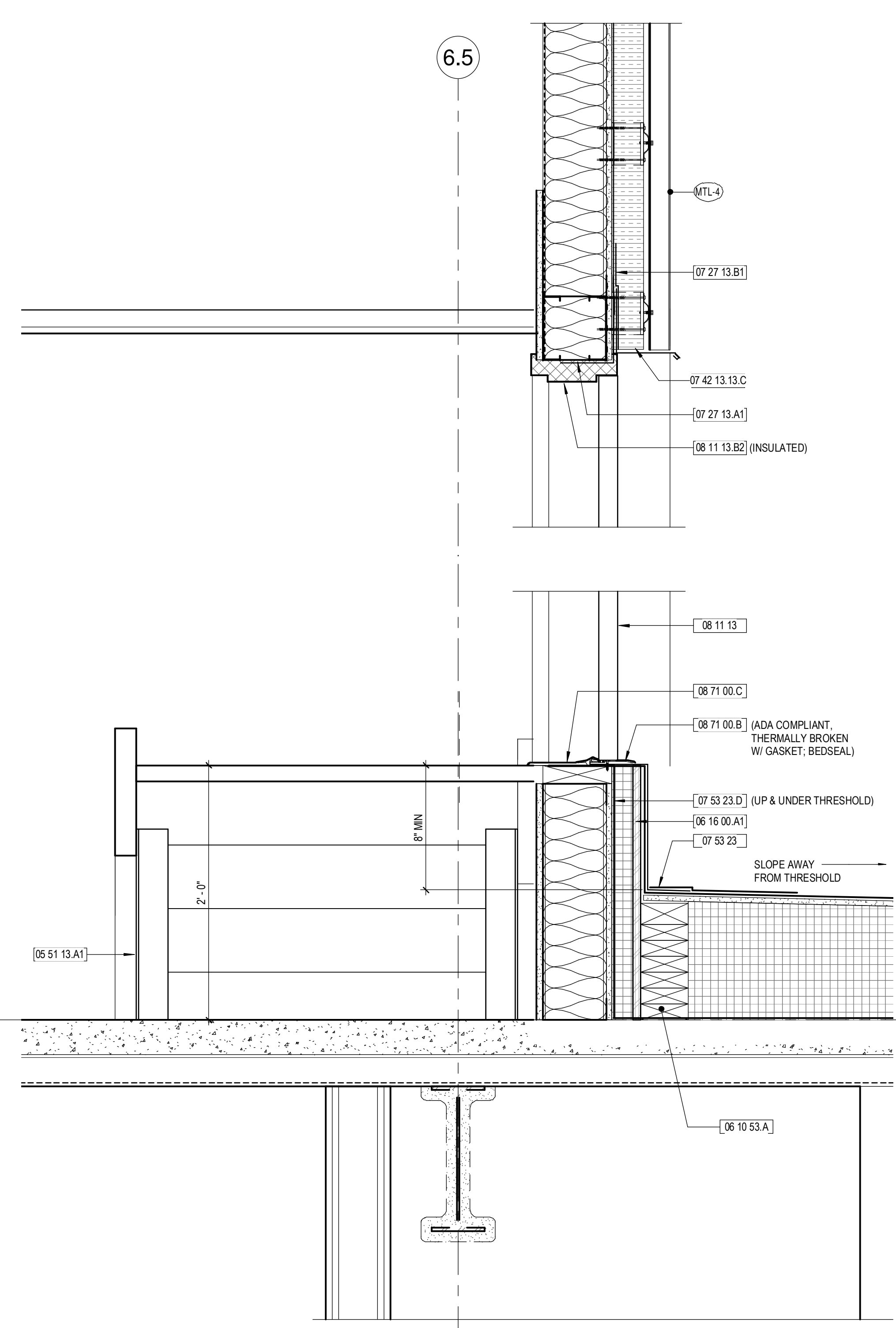
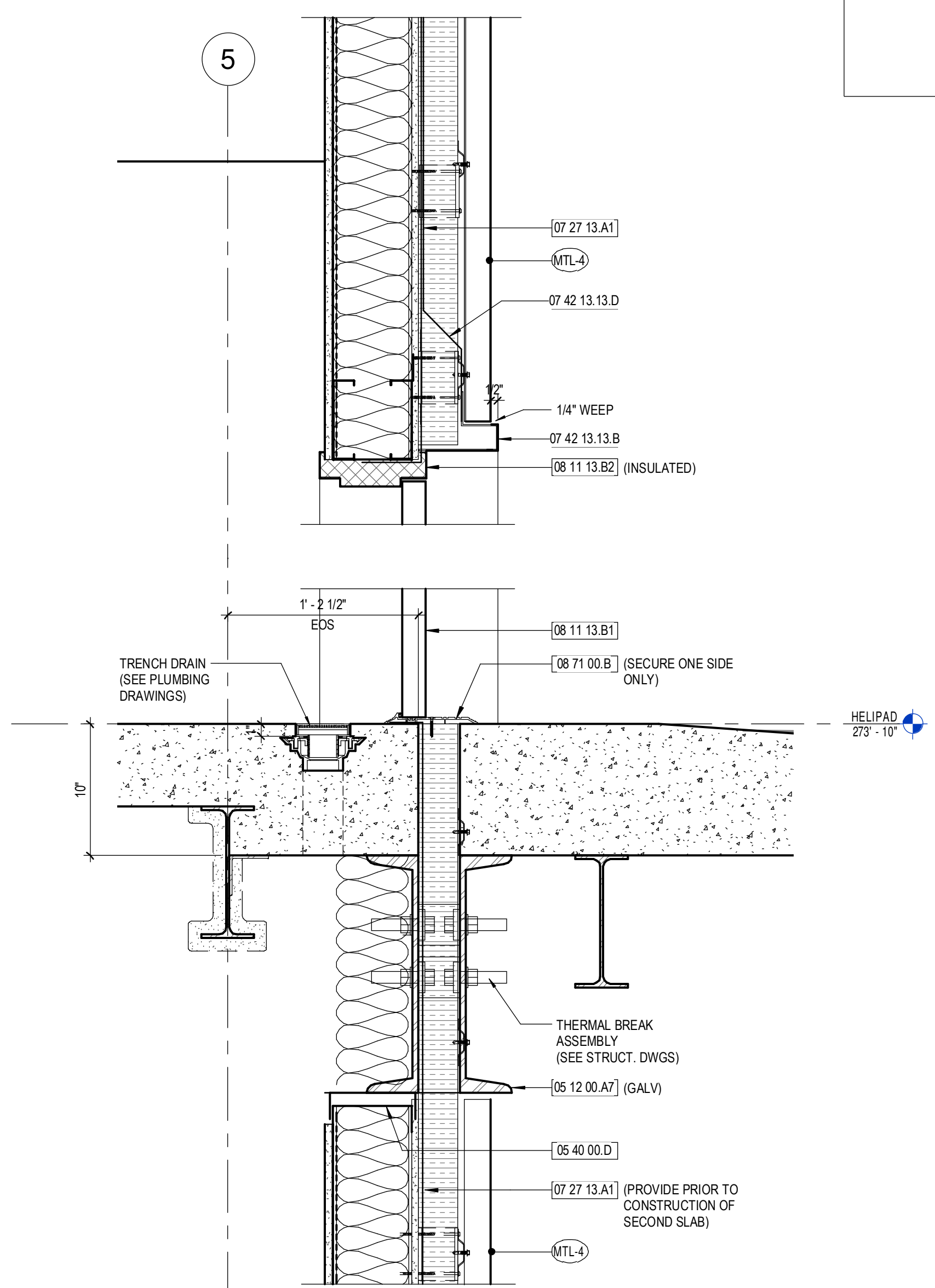
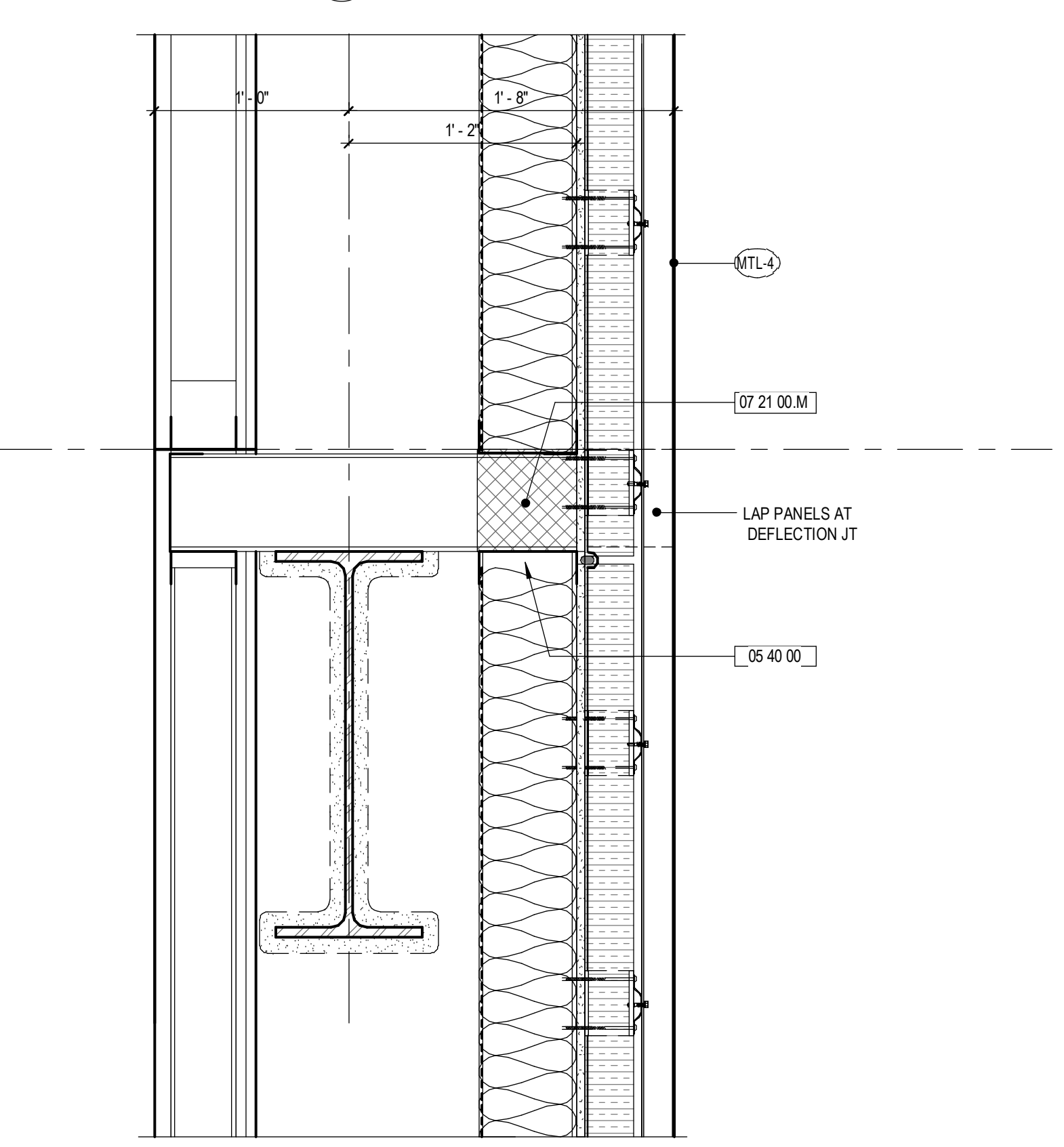
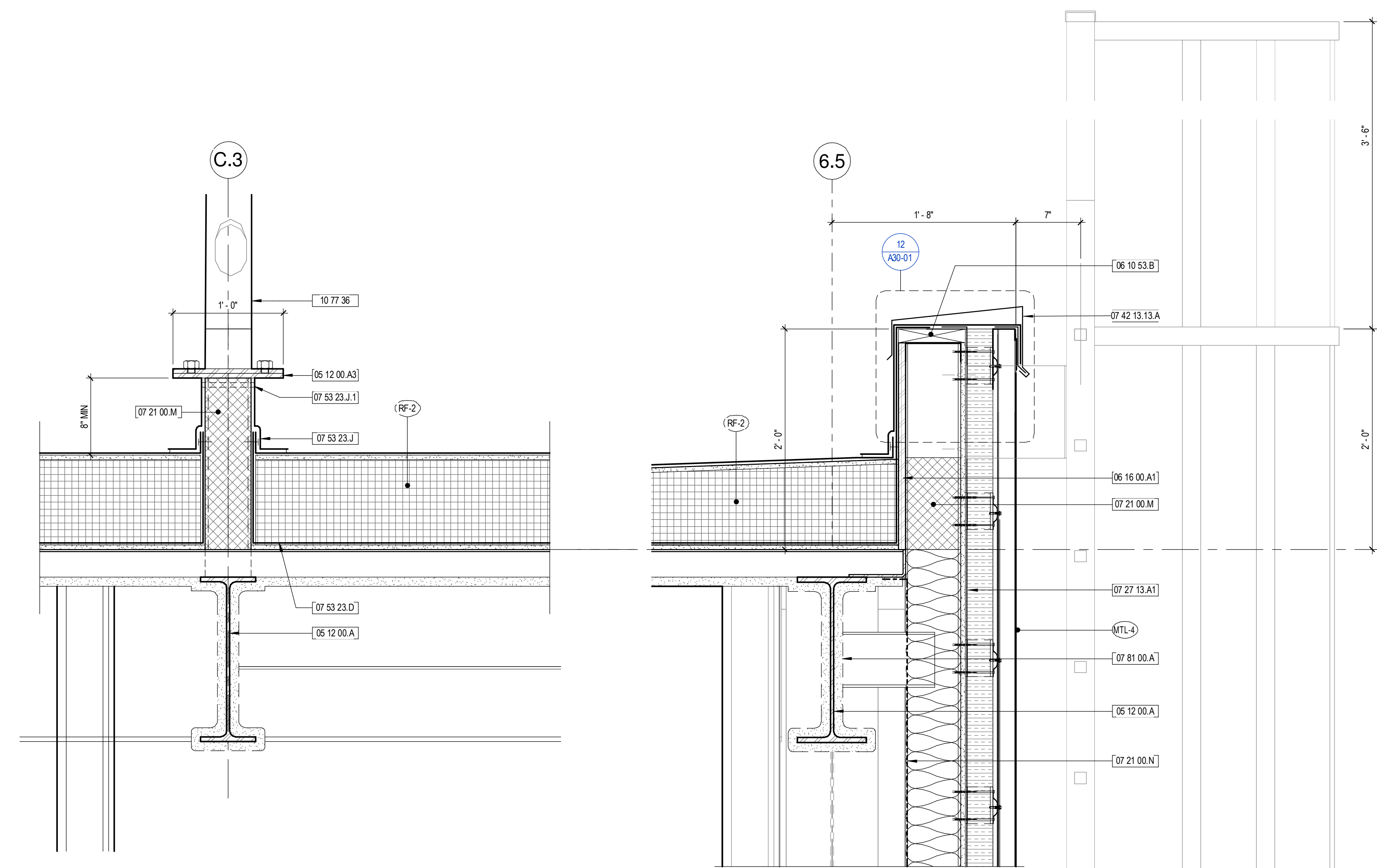


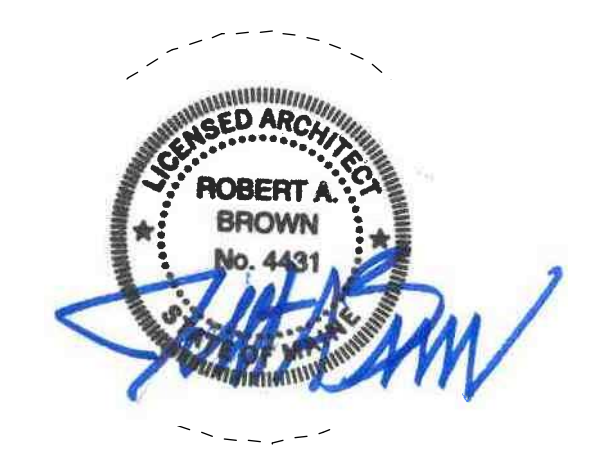
**KEYNOTES**

- 05 12 00.A STL BEAM
- 05 12 00.A3 STL PL
- 05 12 00.A7 STL CHANNEL
- 05 40 00 COLD-FORMED METAL FRAMING
- 06 40 00 D VERTICAL DEFLECTION CLIP
- 06 40 00 M FIBERGLASS THERMAL CLIP
- 05 51 13.A1 STAIR FRAMING
- 06 10 53.A PRESSURE-TREATED WOOD BLOCKING
- 06 10 53.B FIRE RETARDANT-TREATED WOOD BLOCKING
- 06 16 00.A1 FIRE-RETARDANT TREATED FL WOOD
- 07 21 00 M CLOSED-CELL SPRAY POLYURETHANE FOAM
- 07 21 00 N VAPOR RETARDERS
- 07 27 13.A1 NON-PERMEABLE MEMBRANE AIR BARRIER
- 07 27 13.B1 COUNTERFLASHING STRIP
- 07 42 13 13.A CAP FLASHING
- 07 42 13 13.B EXTRUDED TRIM
- 07 42 13 13.C HEAD FLASHING
- 07 42 13 13.D FLASHING TAPE
- 07 53 23 ETHYLENE-PROPYLENE-DIENE-MONOMER (EPDM) ROOFING
- 07 53 23 D VAPOR BARRIER
- 07 53 23 J FIRE BOOT/S
- 07 53 23 J1 SST BOOT CLAMP
- 07 81 00 A SPRAYED FIRE RESISTIVE MATERIAL
- 08 11 13 HOLLOW METAL DOORS AND FRAMES
- 08 11 13.B1 EXTERIOR HM DOOR
- 08 11 13.B2 EXTERIOR HM FRAME
- 08 11 13.B3 DOOR THRESHOLD
- 08 11 13.C THRESHOLD PLATE
- 08 11 13.A CONCRETE SEALER
- 10 77 36 WINDSOCK

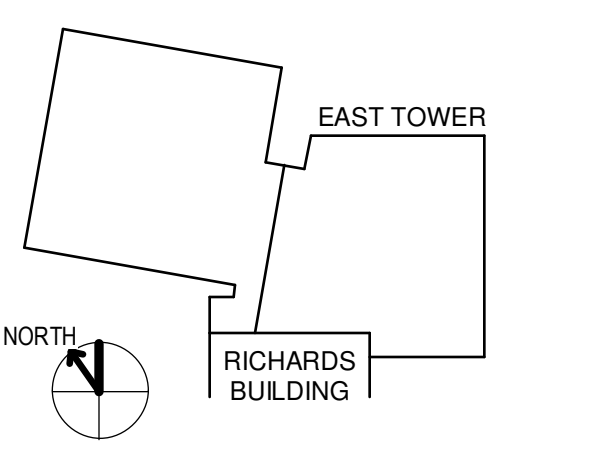


PROJECT TITLE

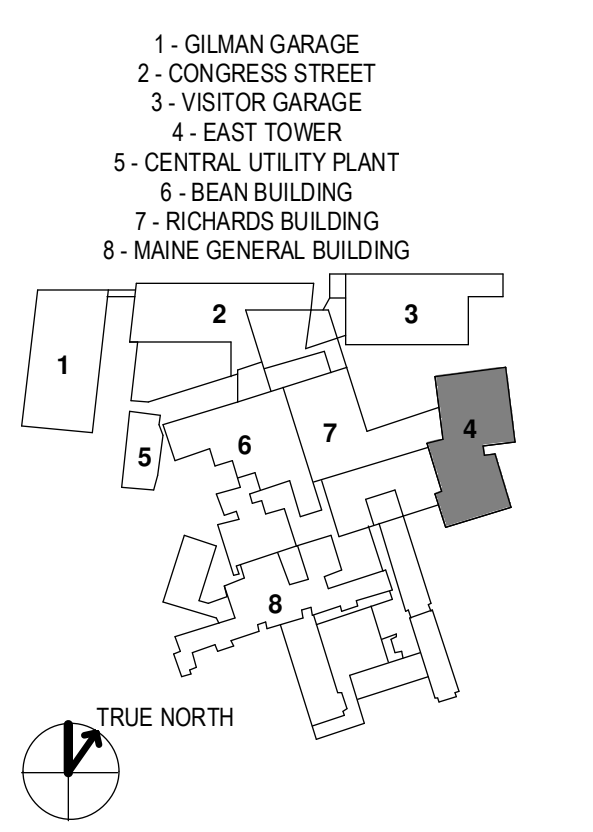
**East Tower 6 & 7 Addition**  
22 Bramhall Street  
Portland ME 04102



KEY PLANS



OVERALL KEY PLAN



CONSTRUCTION DOCUMENTS  
JANUARY 26, 2018

NO	ISSUE	DATE
2	ADDENDUM NO. 2	3/28/18
1	ADDENDUM NO. 1	3/22/18
NO	ISSUE	DATE

Job Number 152181.000  
Drawn TEAM  
Checked JK  
Approved JK

TITLE  
**EXTERIOR SECTION DETAILS - HOISTWAY**

SHEET NUMBER  
**A32-05**