

KEYNOTES

- 05 12 00 A3 STL PL
- 05 40 00 M FIBERGLASS THERMAL CLP
- 07 21 00 H MINERAL WOOL ED INS
- 07 27 13 A1 NON-PERMEABLE MEMBRANE AIR BARRIER
- 07 27 13 B1 COUNTERFLASHING STRIP
- 07 53 23 ETHYLENE-PROPYLENE-DIENE-MONOMER (EPDM) ROOFING
- 07 62 00 B1 SST FLASHING
- 07 62 00 B2 ALUM FLASHING
- 07 84 43 JOINT FRESTOPPING
- 07 82 00 JOINT SEALANTS
- 08 44 13 G5 SILICONE FLASHING SHEET
- 08 44 13 H CURTAIN WALL ANCHOR
- 08 91 19

PERKINS + WILL
 225 Franklin Street, Suite 1100
 Boston, MA 02110
 617.478.0300
 617.478.0321
 www.perkinswill.com

CLIENT
Maine Medical Center
 MaineHealth

22 Bramhall Street
 Portland ME 04102

CONSULTANTS

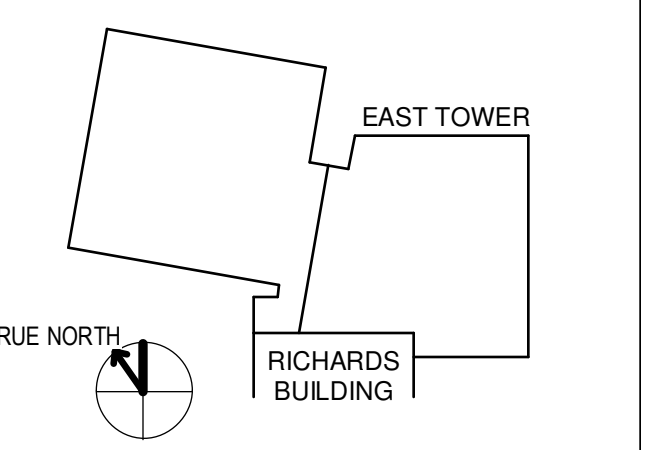
- OWNER / LANDSCAPE ARCHITECT
Sebago Technics
 75 John Roberts Road, Suite 1A, South Portland ME 04106
- STRUCTURAL ENGR. BUILDING ENVELOPE CONSULTANT
Shapiro Gumpertz & Hager Inc.
 41 Seven Street, Building 1, Suite 500, Waltham MA 02453
- MEPP ENGINEER / CODE
AKF Group LLC
 99 Bedford Street, 2nd Floor, Boston MA 02111
- CONSTRUCTION MANAGER
Turner Construction
 2 Seaport Lane, Suite 200, Boston MA 02210
- ELEVATOR CONSULTANT
VDA (Van Dusen & Associates)
 101 Summer Street, 4th Floor, Boston MA 02110
- COST ESTIMATOR
D. G. Jones International
 3 Baldwin Green Common, Suite 202, Woburn MA 01801

PROJECT TITLE

East Tower 6 & 7 Addition
 22 Bramhall Street
 Portland ME 04102

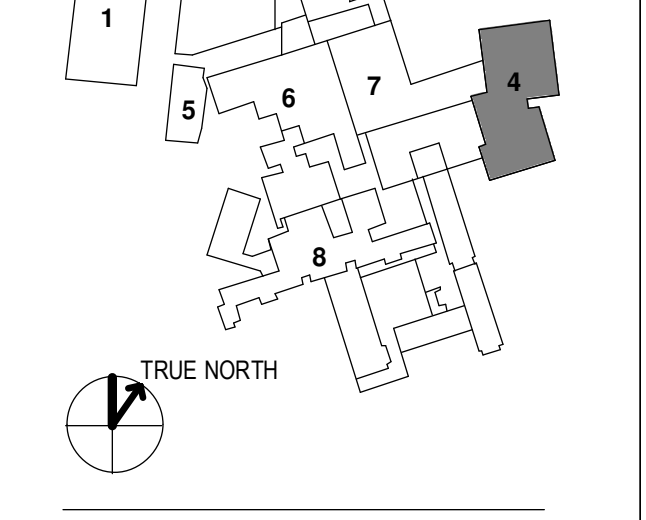


KEY PLANS



OVERALL KEY PLAN

- 1 - GILMAN GARAGE
- 2 - CONGRESS STREET
- 3 - VISITOR GARAGE
- 4 - EAST TOWER
- 5 - CENTRAL UTILITY PLANT
- 6 - BEAN BUILDING
- 7 - RICHARDS BUILDING
- 8 - MAINE GENERAL BUILDING



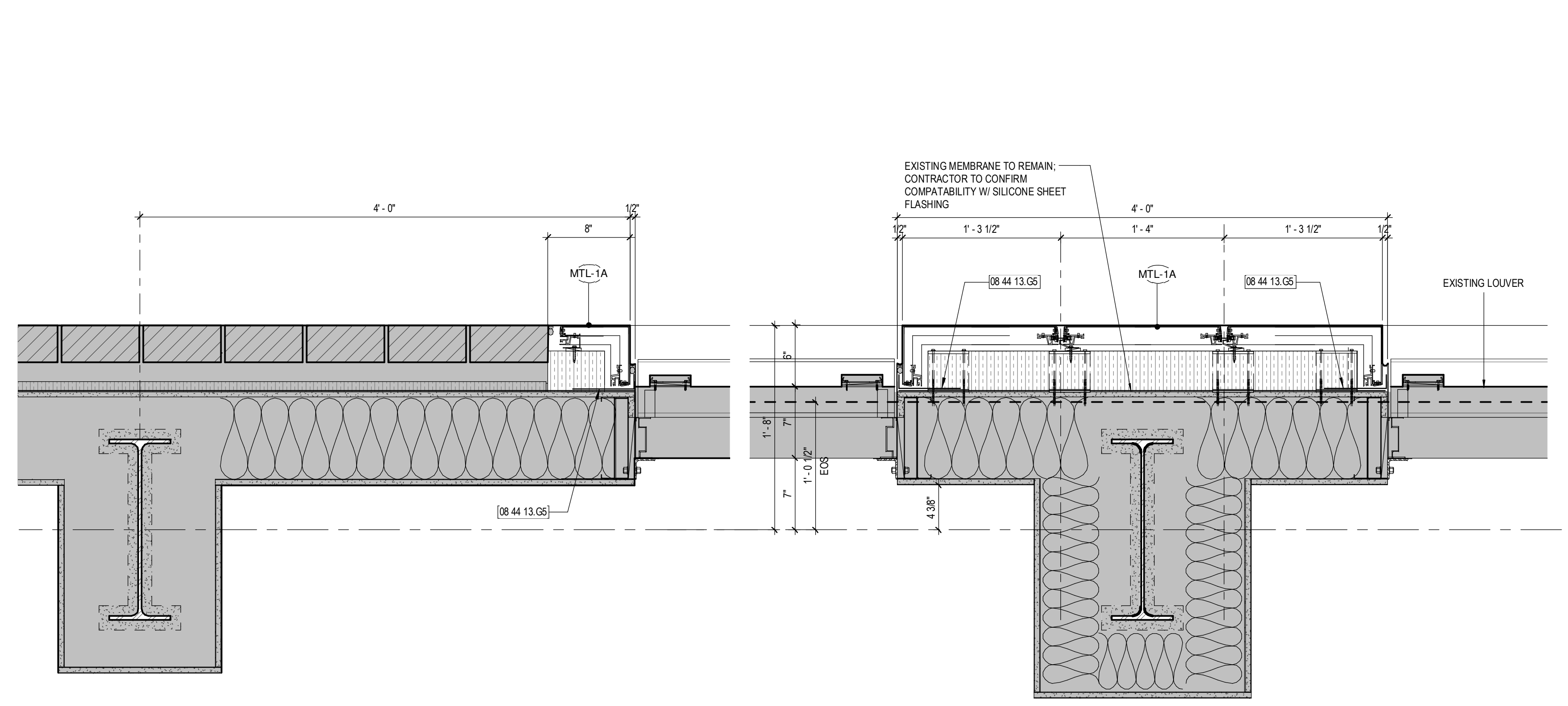
CONSTRUCTION DOCUMENTS
 JANUARY 26, 2018

| NO | ISSUE | DATE |
|----|----------------|---------|
| 1 | ADDENDUM NO. 2 | 3/29/18 |

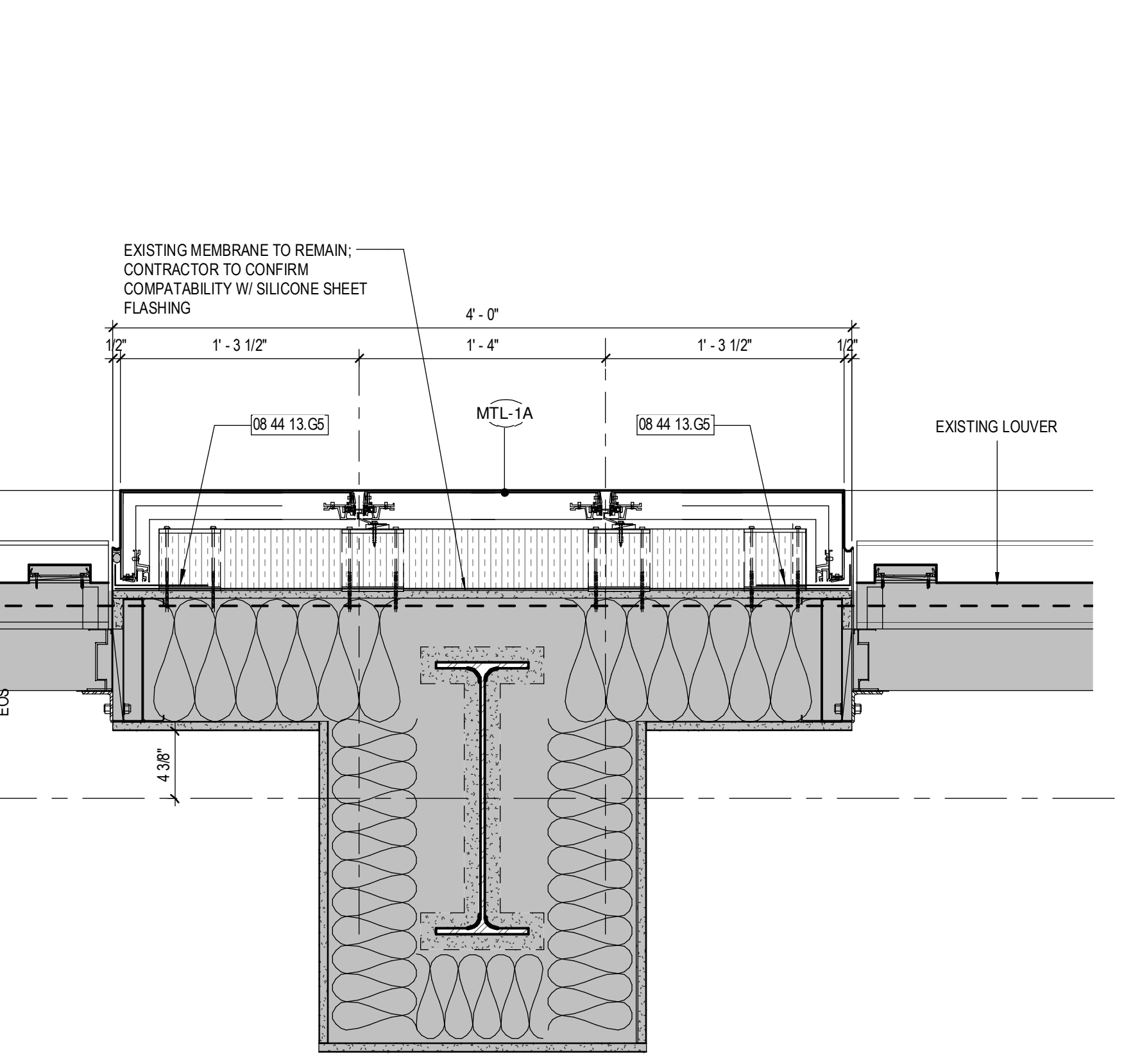
Job Number: 152181.000
 Drawn: TEAM
 Checked: JK
 Approved: JK

TITLE
EXTERIOR SECTION DETAILS - MECHANICAL FLOOR
 SHEET NUMBER

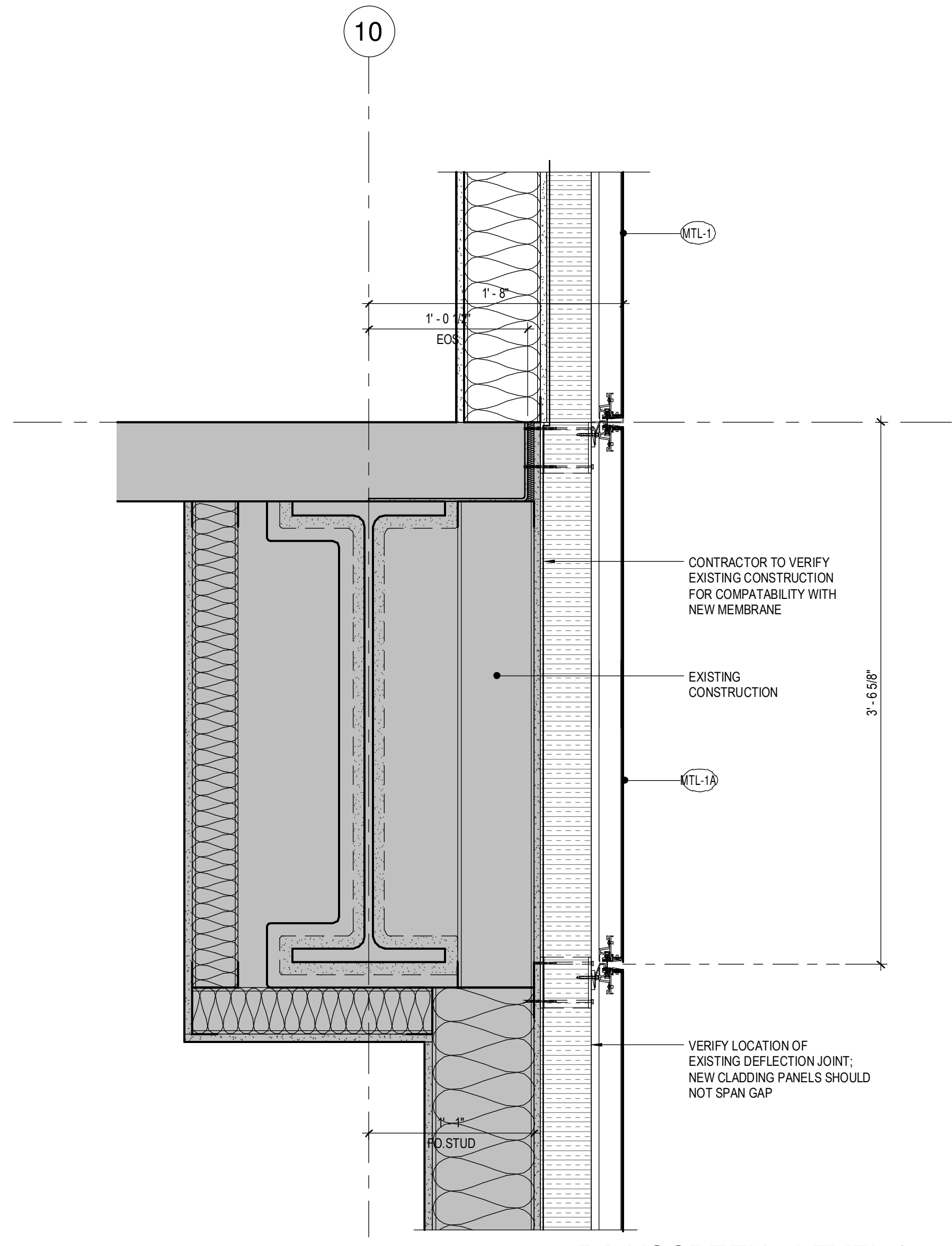
A32-03



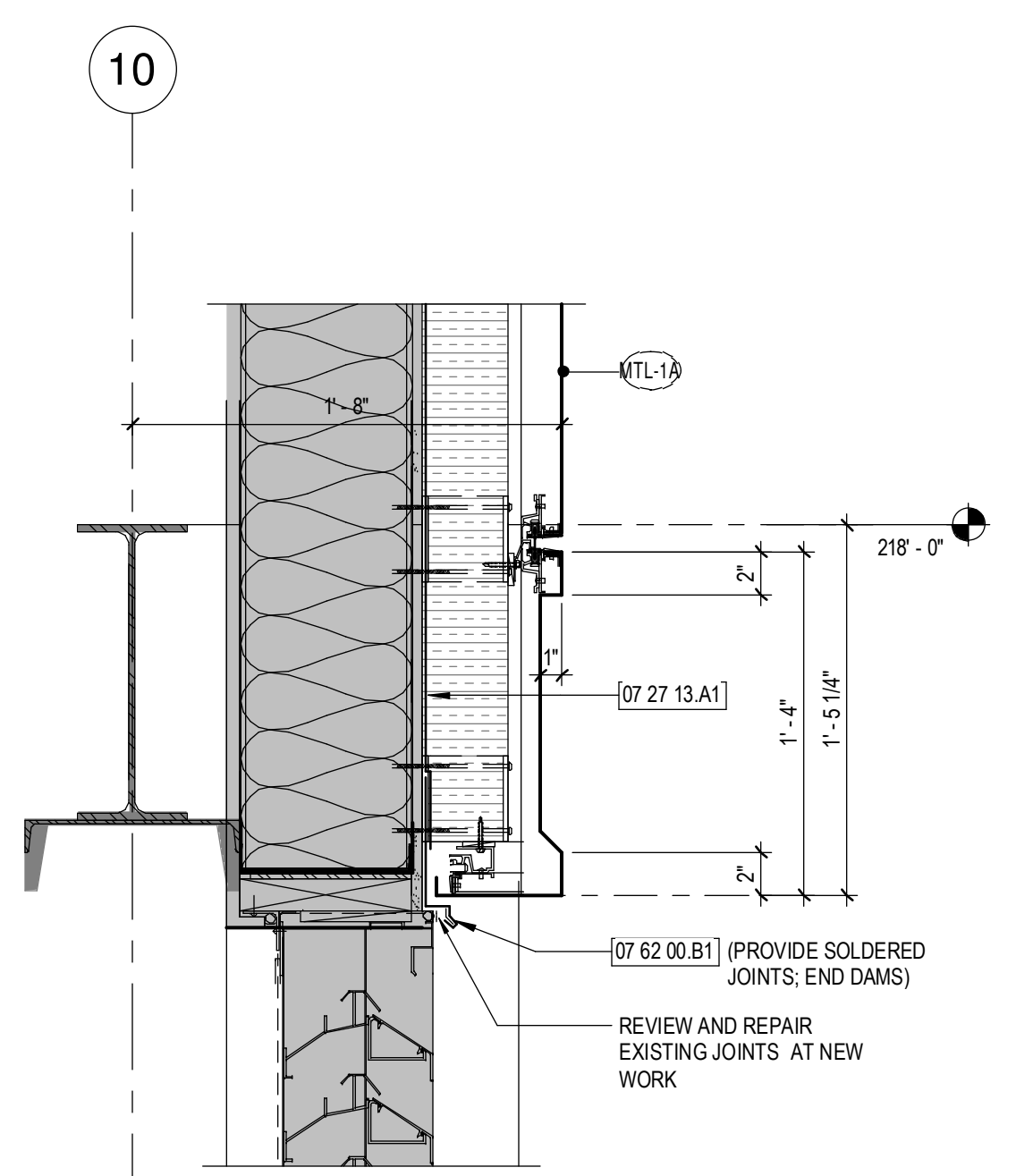
7 LEVEL 5 - MTL PANEL REPLACEMENT AT BRICK
 1 1/2" = 1'-0"



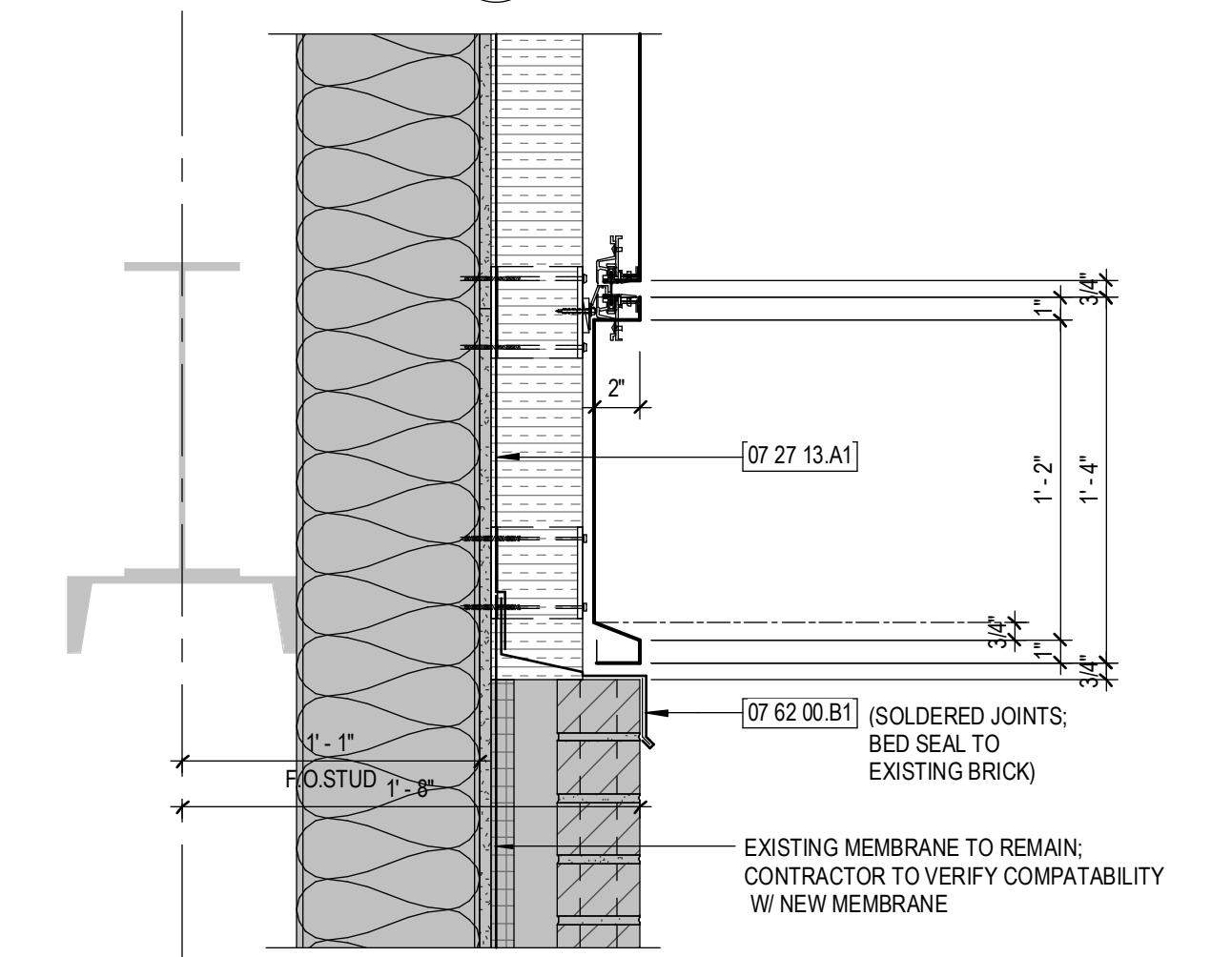
6 LEVEL 5 - TYPICAL MTL PANEL REPLACEMENT
 1 1/2" = 1'-0"



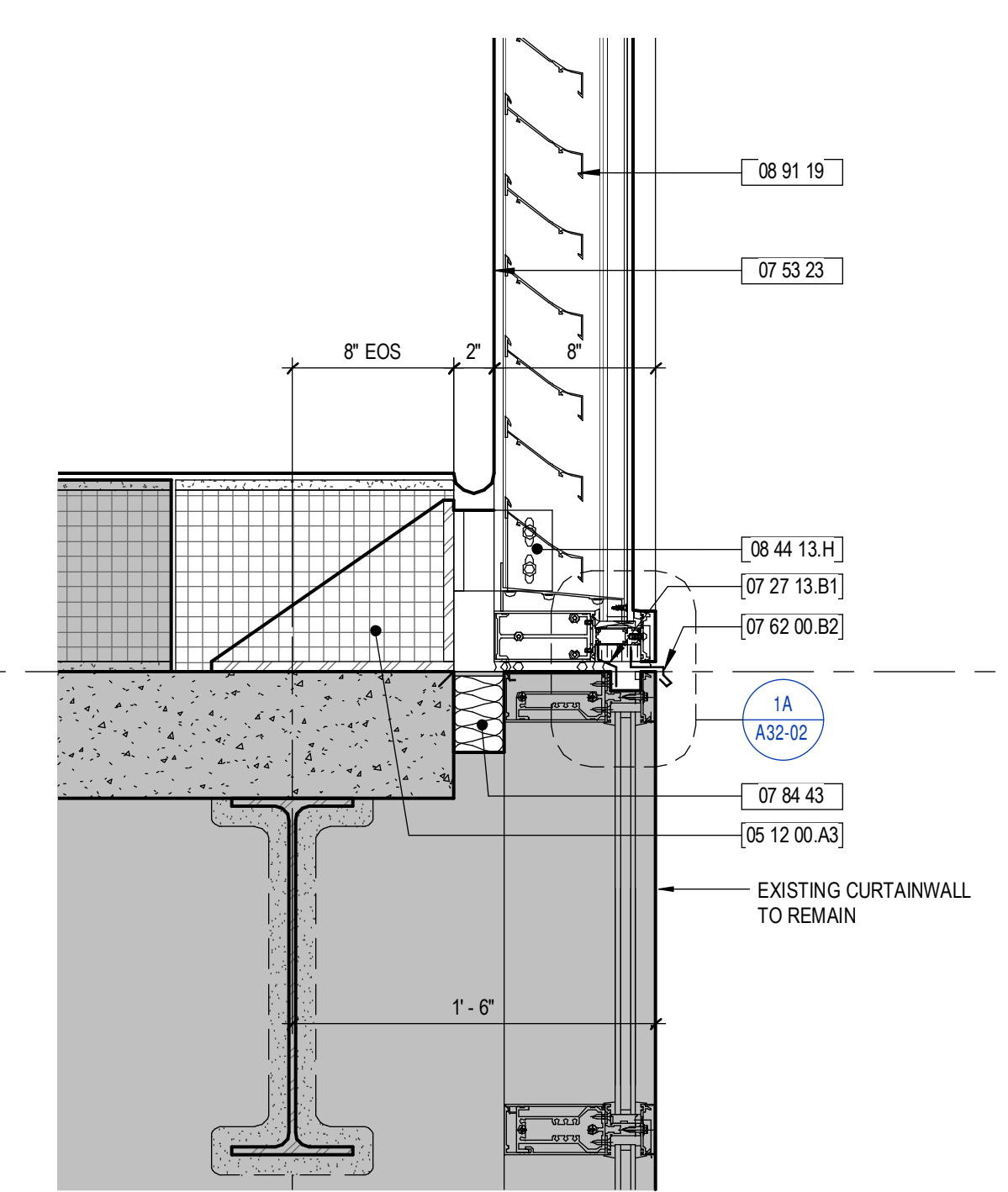
3 RAINSCREEN - LEVEL 6
 1 1/2" = 1'-0"



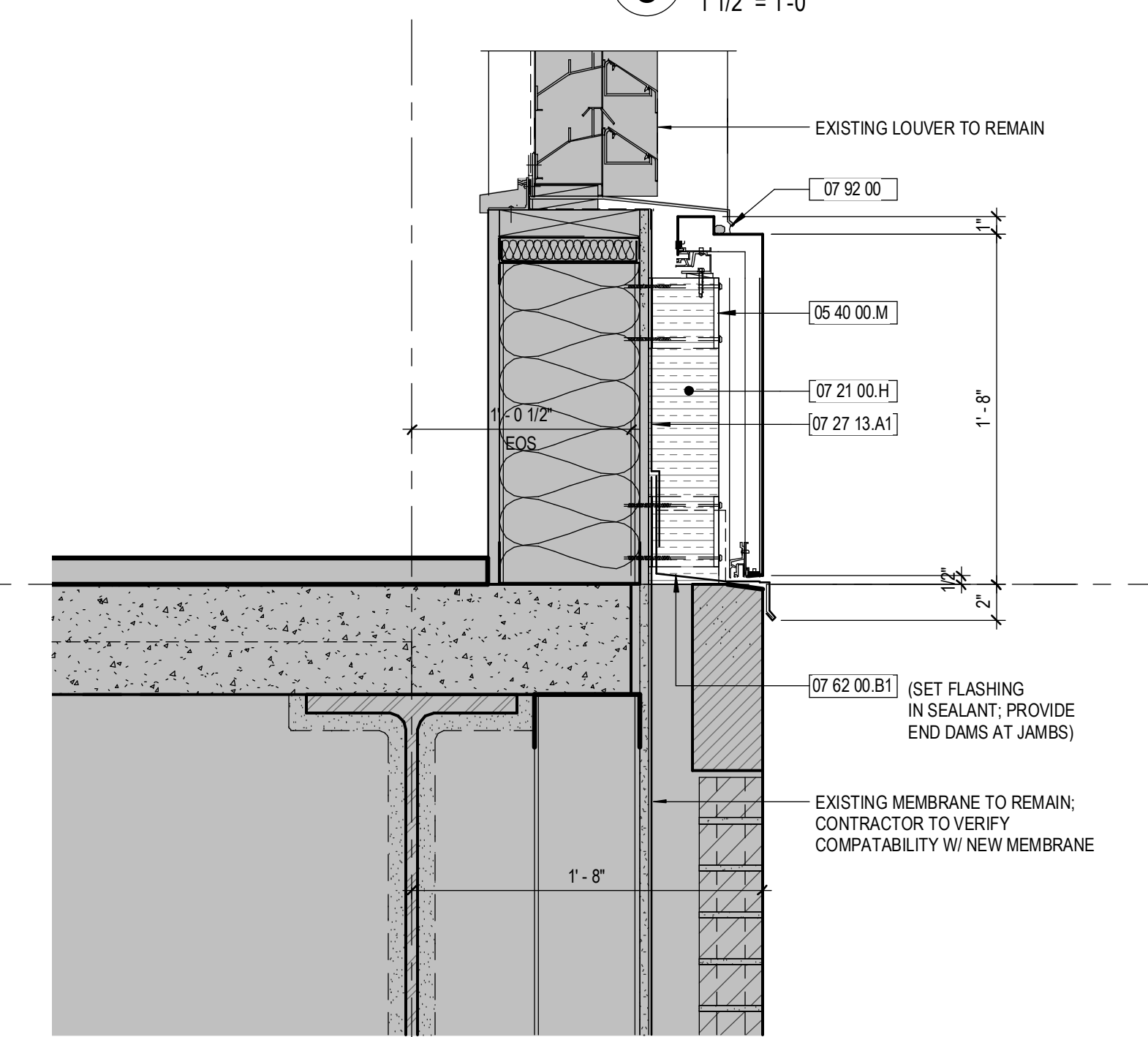
5 LOUVER HEAD - LEVEL 5
 1 1/2" = 1'-0"



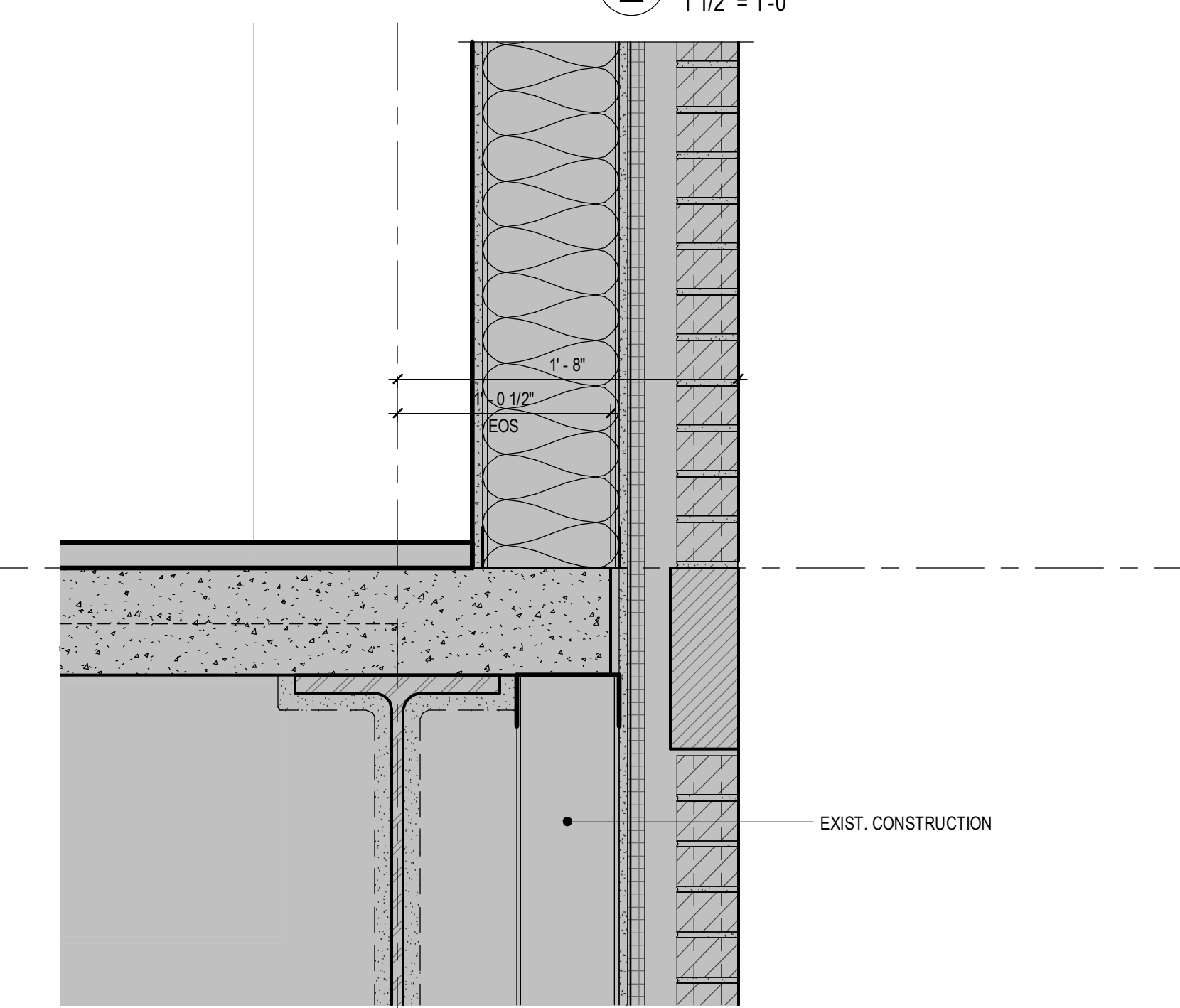
2 RAINSCREEN - LEVEL 5
 1 1/2" = 1'-0"



8 CURTAINWALL SILL AT LOUVER INFILL
 1 1/2" = 1'-0"



4 LOUVER SILL - LEVEL 5
 1 1/2" = 1'-0"



1 BRICK - LEVEL 5
 1 1/2" = 1'-0"