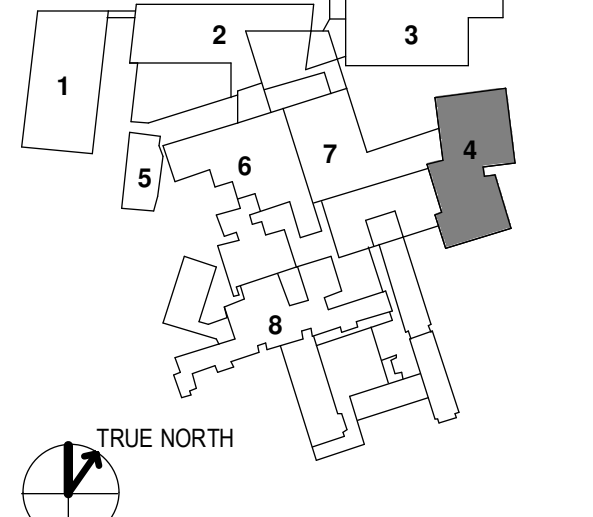


- 1 - GILMAN GARAGE
- 2 - CONGRESS STREET
- 3 - VISITOR GARAGE
- 4 - EAST TOWER
- 5 - CENTRAL UTILITY PLANT
- 6 - BEAN BUILDING
- 7 - RICHARDS BUILDING
- 8 - MAINE GENERAL BUILDING

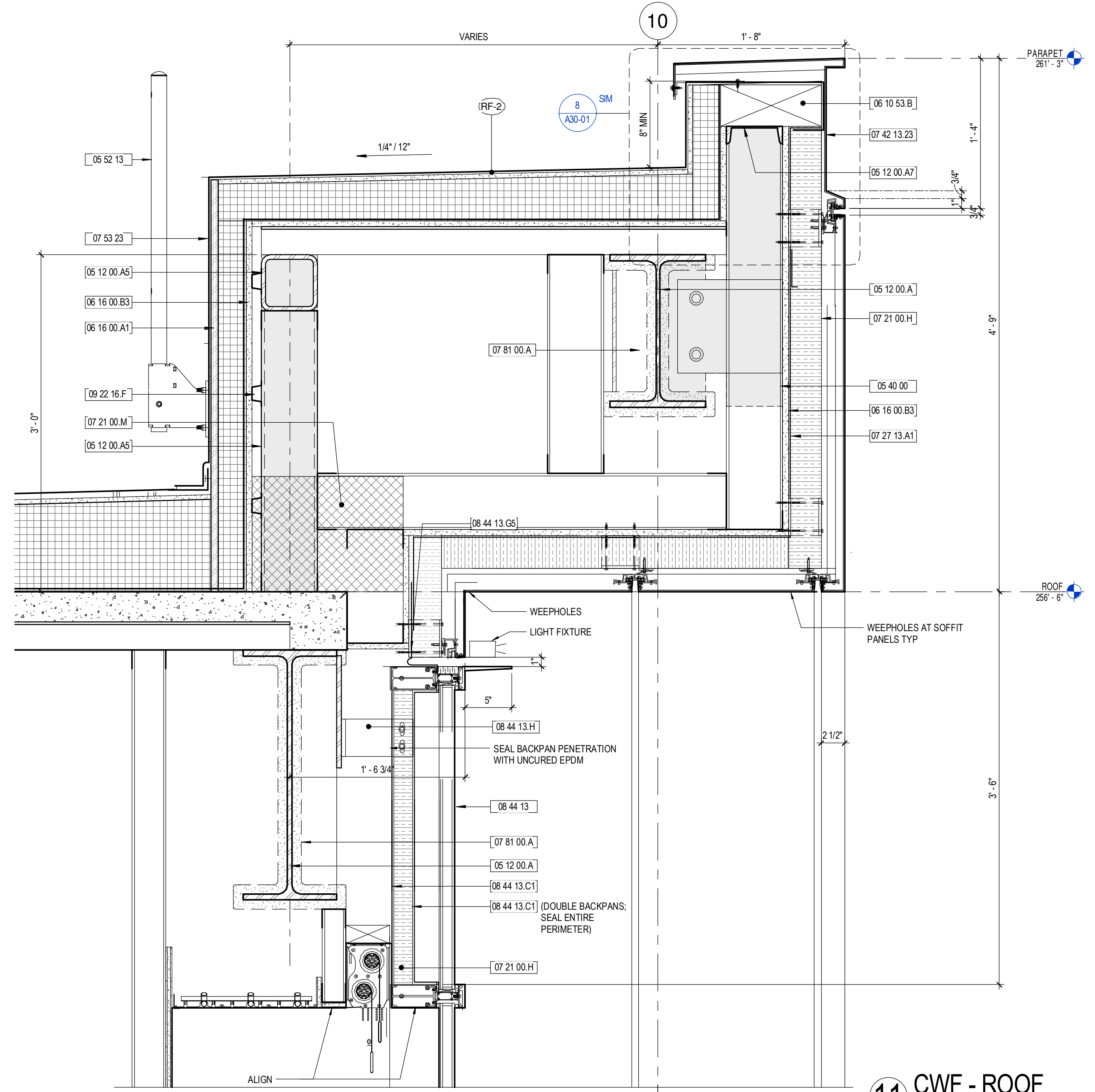


NO	ISSUE	DATE
2	ADDENDUM NO. 2	3/28/18
1	ADDENDUM NO. 1	3/22/18
NO	ISSUE	DATE

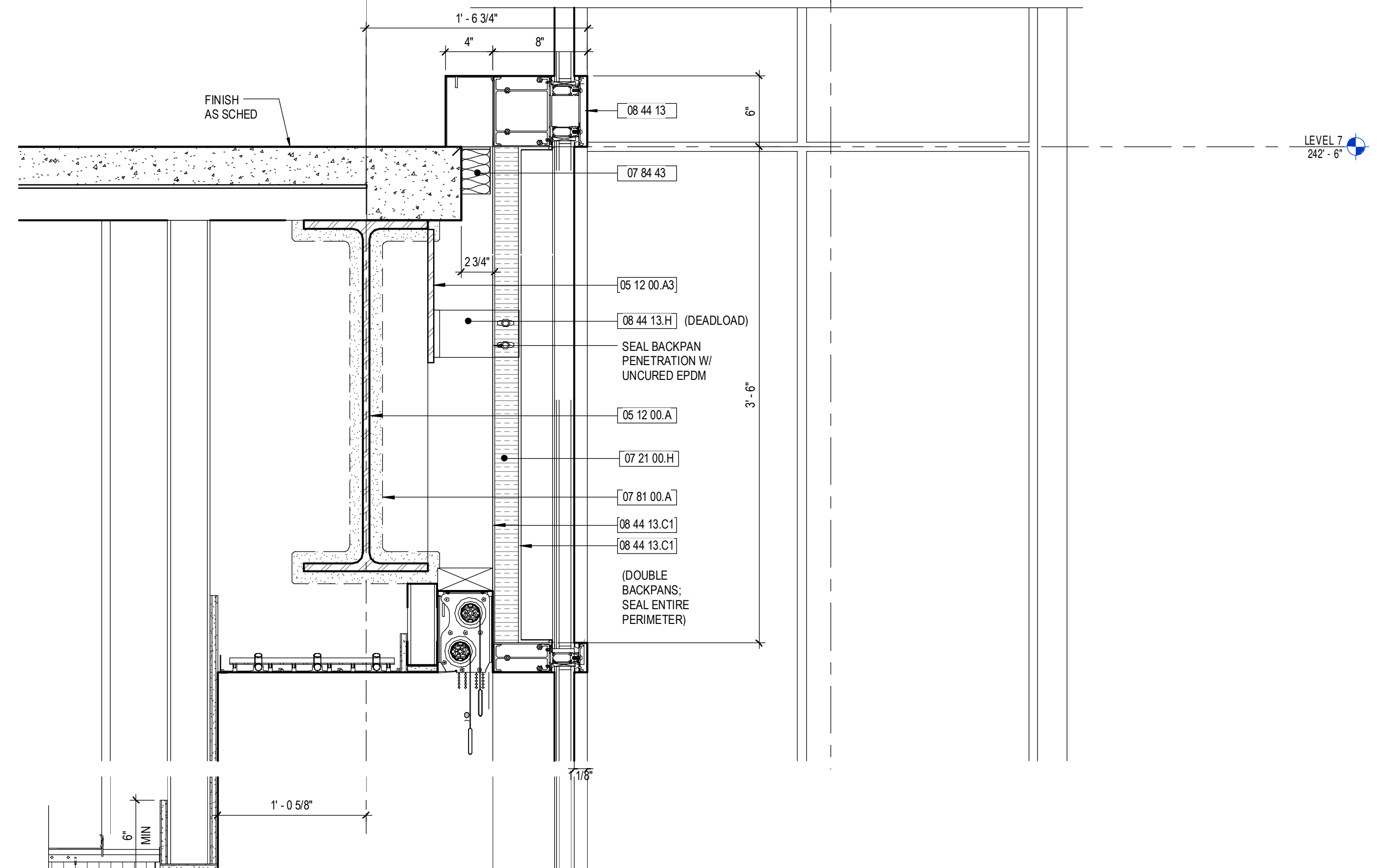
Job Number: 152181.000
Drawn: TEAM
Checked: JK
Approved: JK

KEYNOTES

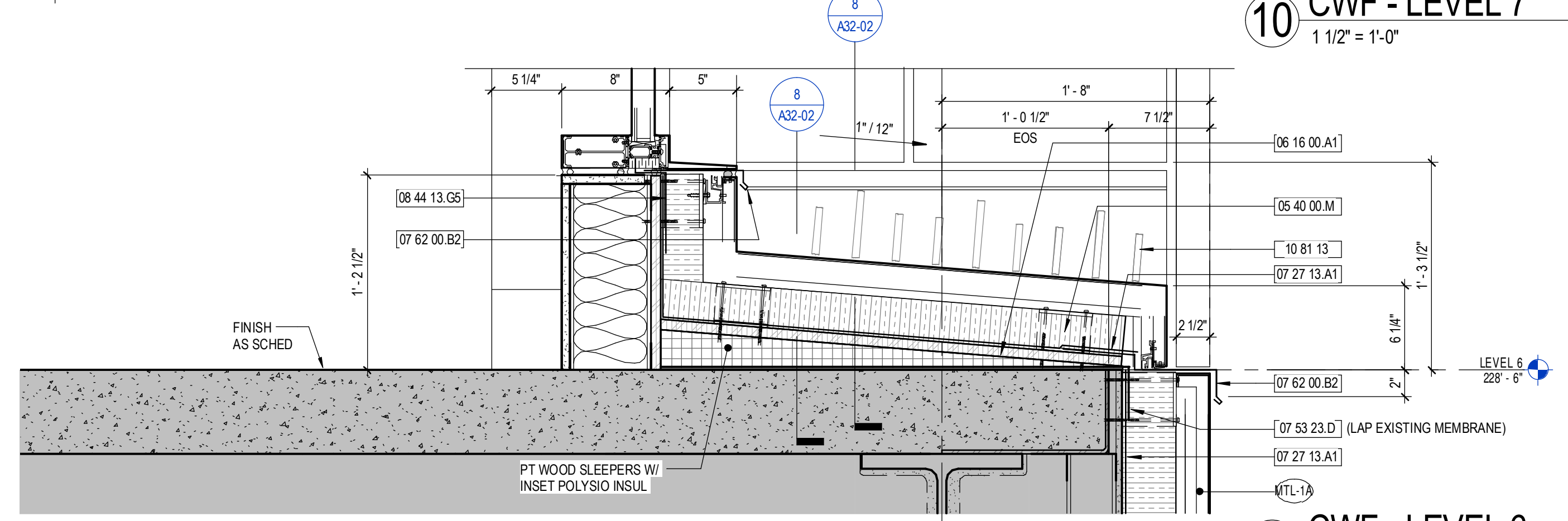
- 06 12 00 A STL BEAM
- 06 12 00 A3 STL PL
- 06 12 00 A6 STL TUBE
- 06 12 00 A7 STL CHANNEL
- 06 40 00 COLD-FORMED METAL FRAMING
- 06 40 00 M FIBERGLASS THERMAL CLIP
- 06 52 13 PIPE AND TUBE RAILINGS
- 06 10 53 A PRESSURE-TREATED WOOD BLOCKING
- 06 10 53 B FIRE-RETARDANT-TREATED WOOD BLOCKING
- 06 18 00 A1 FIRE-RETARDANT TREATED PLYWOOD
- 06 16 00 B3 GLASS-MAT OYSPUM WALL SHEATHING
- 07 21 00 E MINERAL WOOL BATT
- 07 21 00 H MINERAL WOOL BO INS
- 07 21 00 M CLOSED-CELL SPRAY POLYURETHANE FOAM
- 07 21 13 A1 NON-PERMEABLE MEMBRANE AIR BARRIER
- 07 42 13 23 METAL COMPOSITE MATERIAL WALL PANELS
- 07 53 23 ETHYLENE-PROPYLENE-DIENE-MONOMER (EPDM) ROOFING
- 07 53 23 D VAPOR BARRIER
- 07 62 00 B1 SET FLASHING
- 07 62 00 B2 ALUM FLASHING
- 07 71 00 B COPING
- 07 81 00 A SPRAYED FIRE RESISTIVE MATERIAL
- 07 84 43 JOINT FRESTOPPING
- 07 84 43 JOINT SEALANTS
- 08 44 13 GLAZED ALUMINUM CURTAIN WALLS
- 08 44 13 B7 ALUM STOOD TRIM
- 08 44 13 C1 CURTAIN WALL BACK PAN
- 08 44 13 C6 SILICONE FLASHING SHEET
- 08 44 13 H CURTAIN WALL ANCHOR
- 08 44 13 J1 ALUM CAP FLASHING
- 08 44 13 F FURRING SYSTEM
- 10 81 13 BRID CONTROL
- 12 24 13 B MANUALLY OPERATED ROLLER SHADE



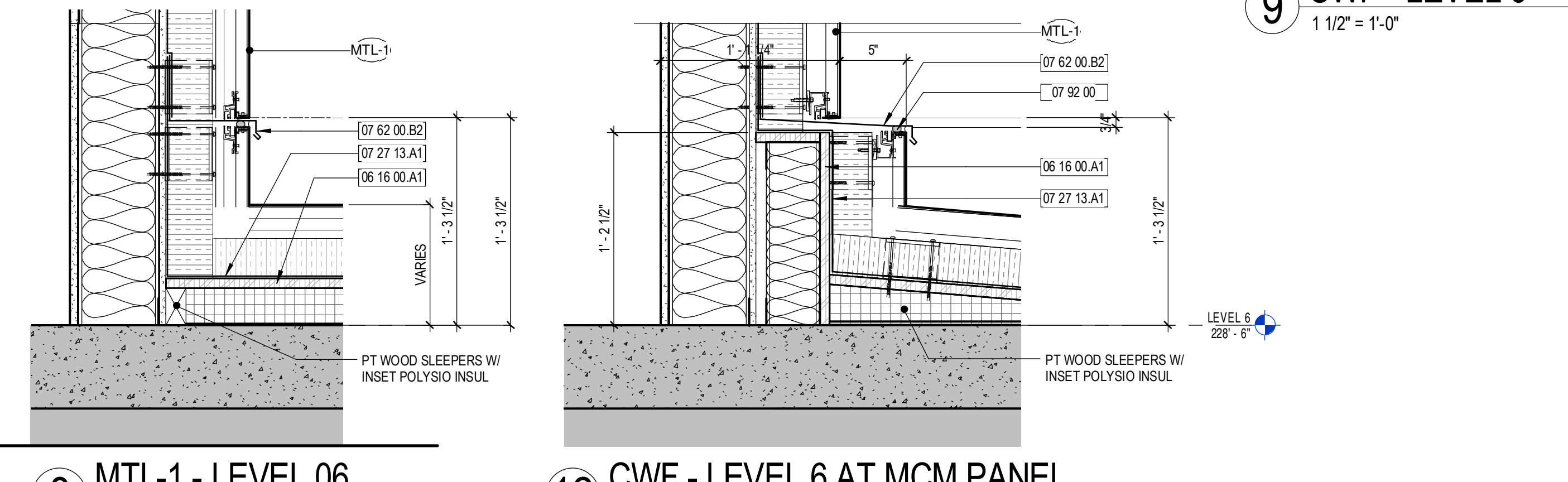
11 CWF - ROOF
1 1/2" = 1'-0"



10 CWF - LEVEL 7
1 1/2" = 1'-0"

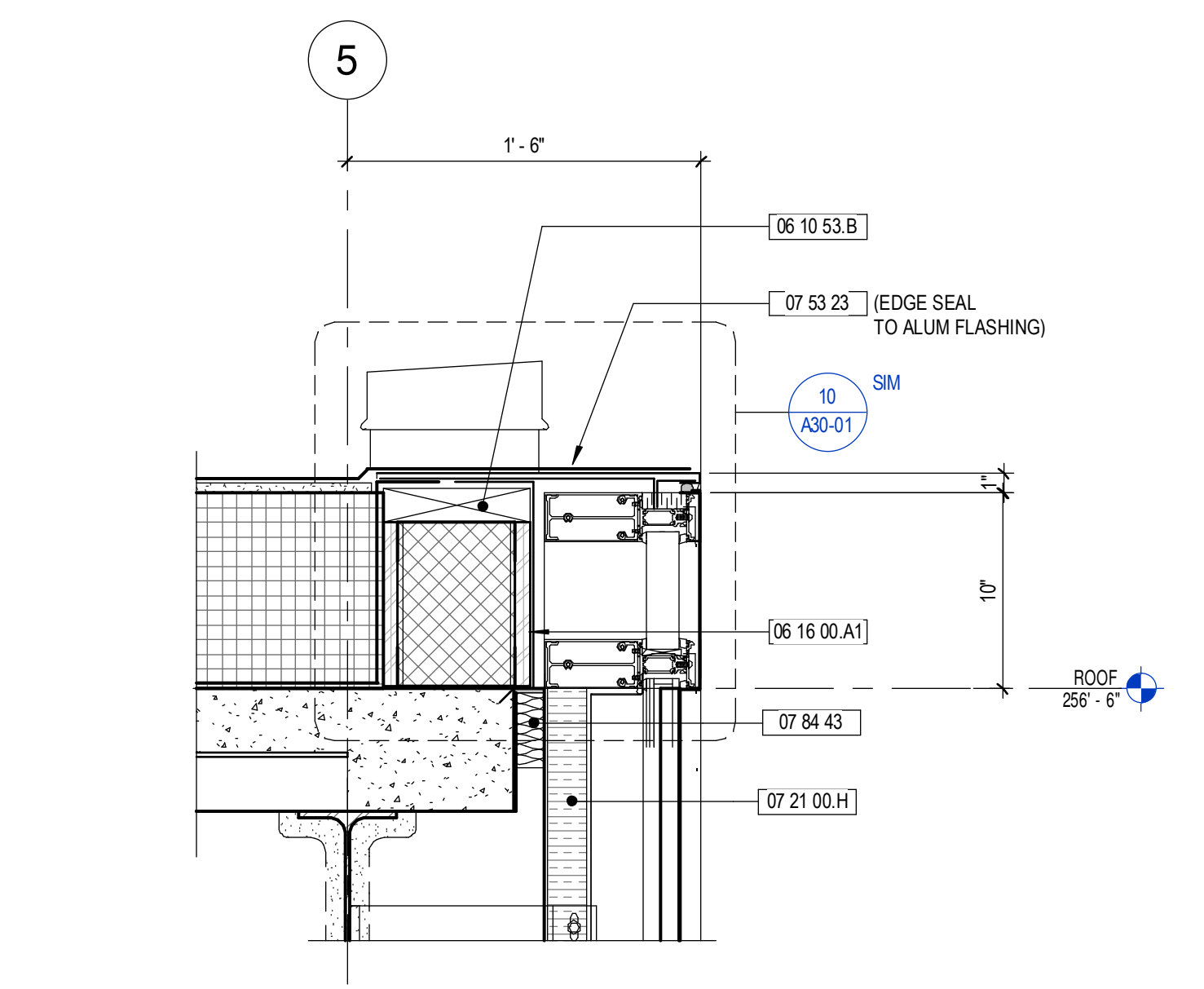


9 CWF - LEVEL 6
1 1/2" = 1'-0"

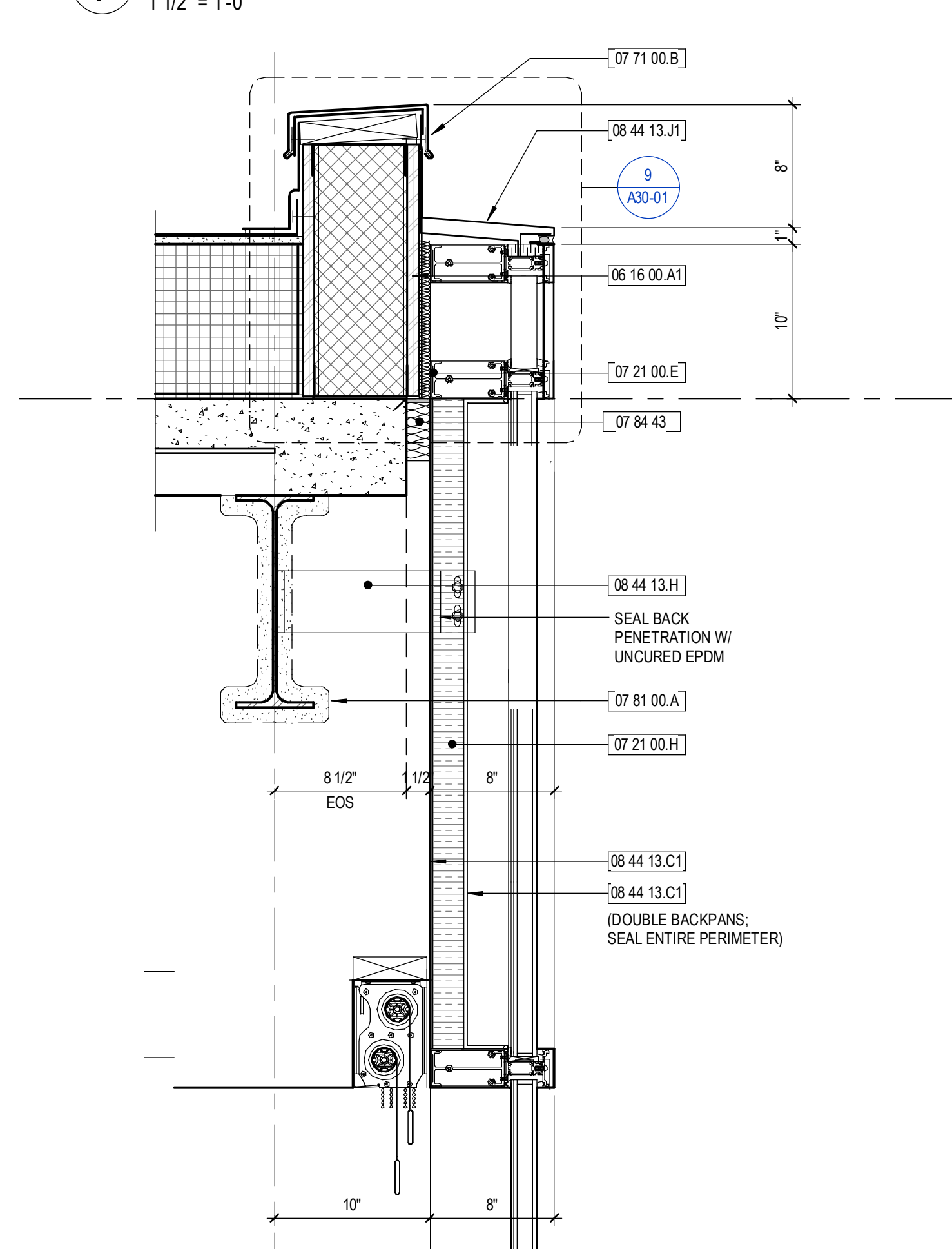


8 MTL-1 - LEVEL 06
1 1/2" = 1'-0"

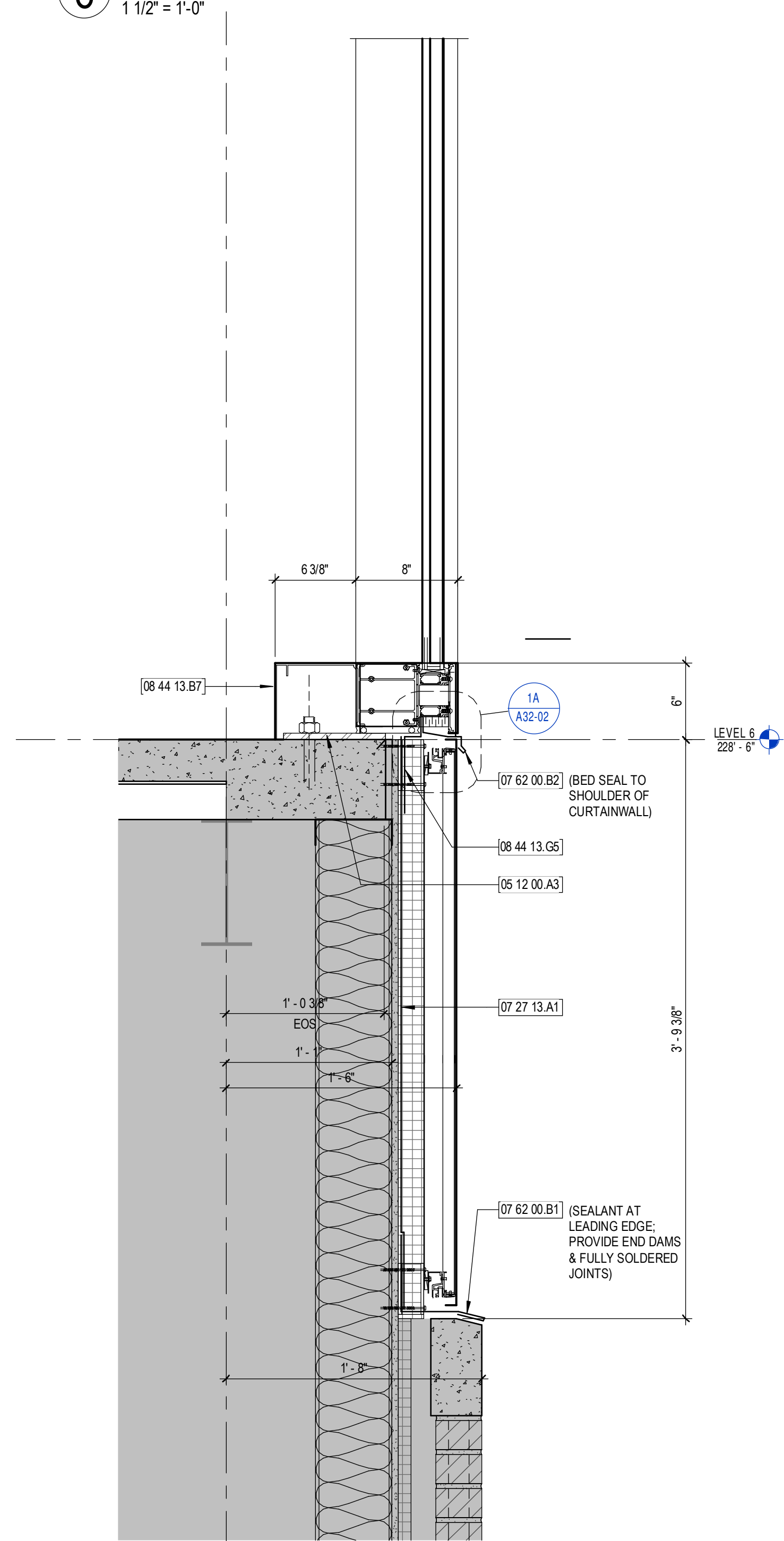
12 CWF - LEVEL 6 AT MCM PANEL
1 1/2" = 1'-0"



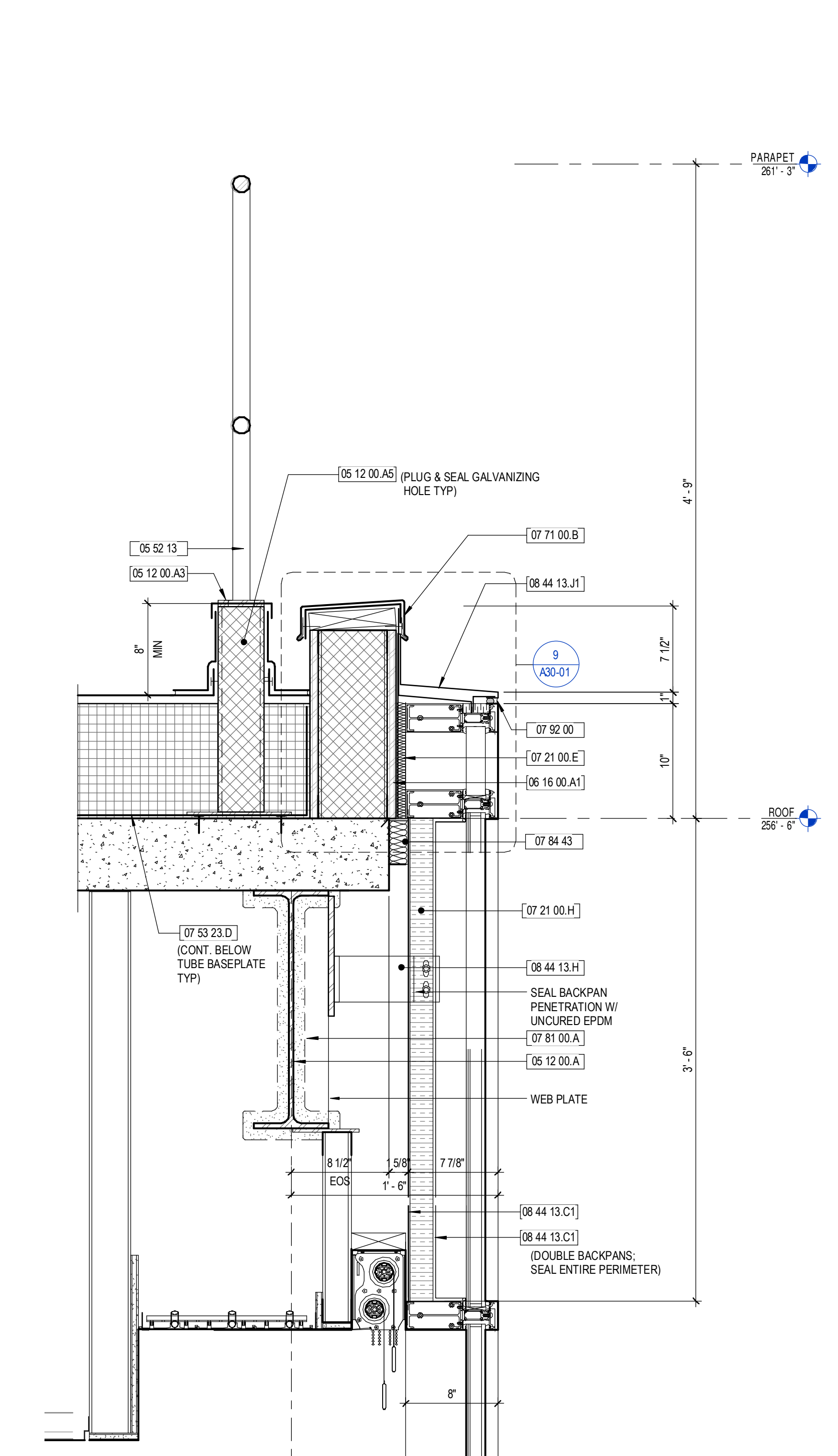
7 CURTAINWALL CL3 - ROOF SCUPPER
1 1/2" = 1'-0"



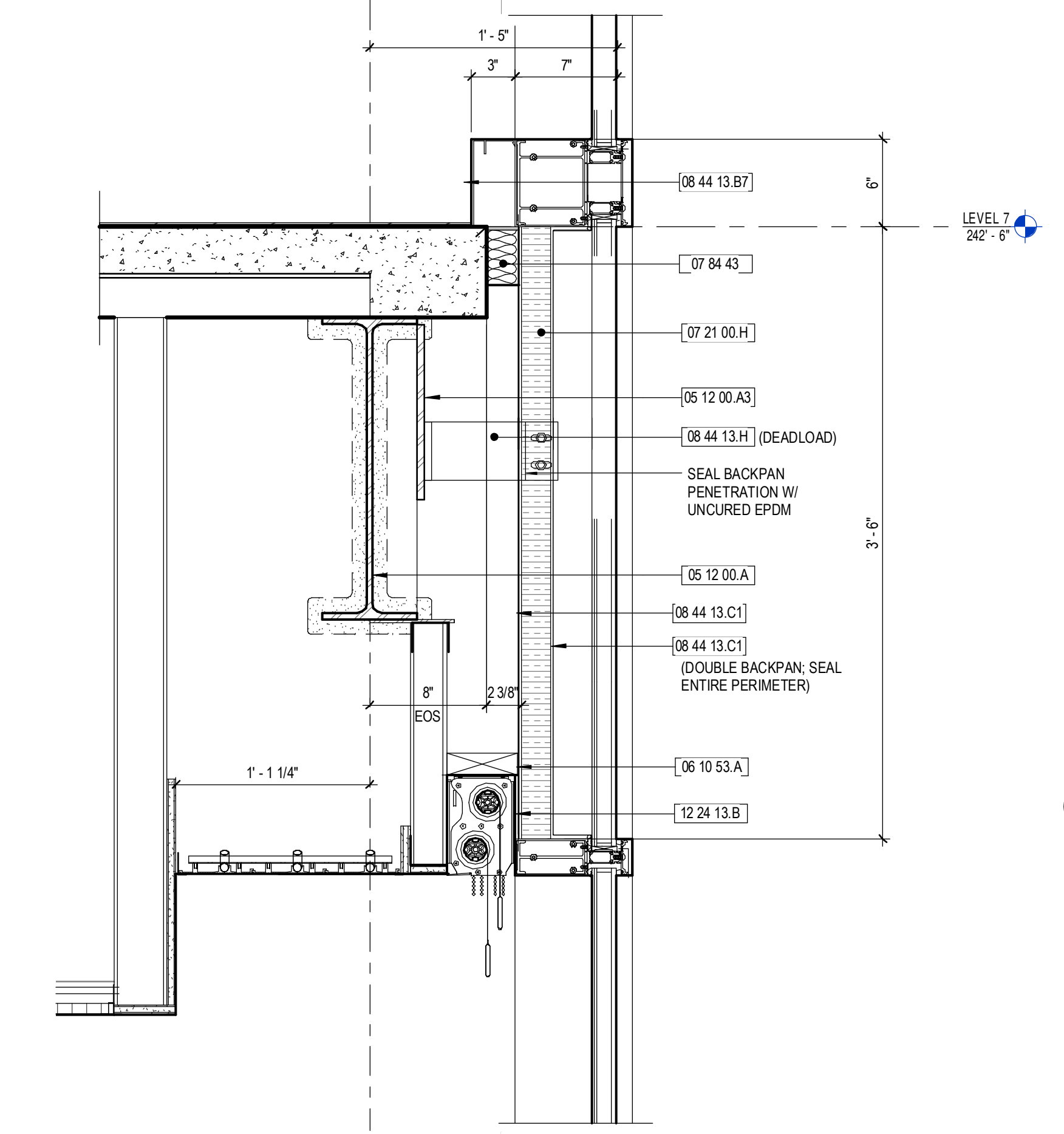
6 CURTAINWALL CL3 - ROOF
1 1/2" = 1'-0"



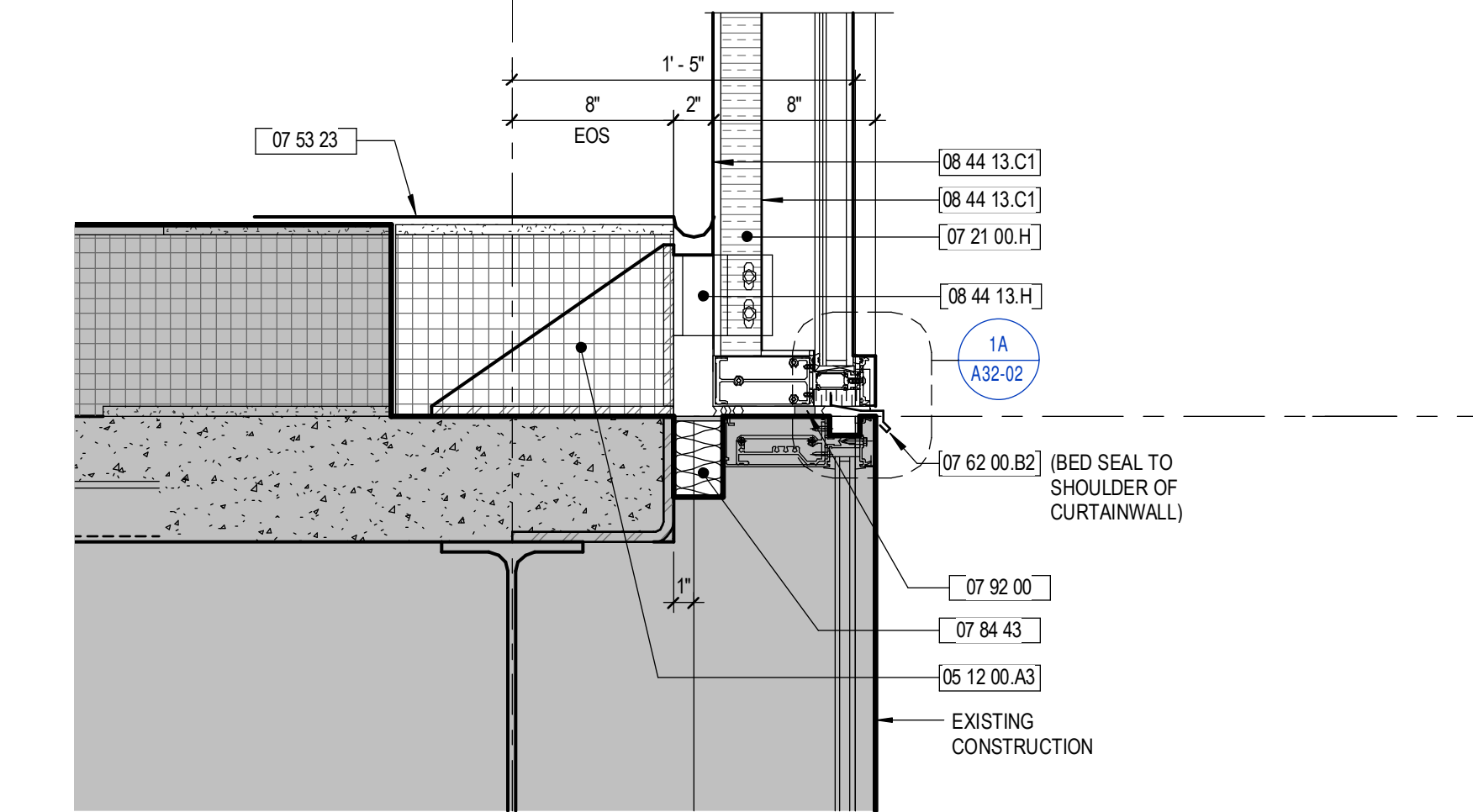
5 CURTAINWALL CL3 - SECTION - LEVEL 6
1 1/2" = 1'-0"



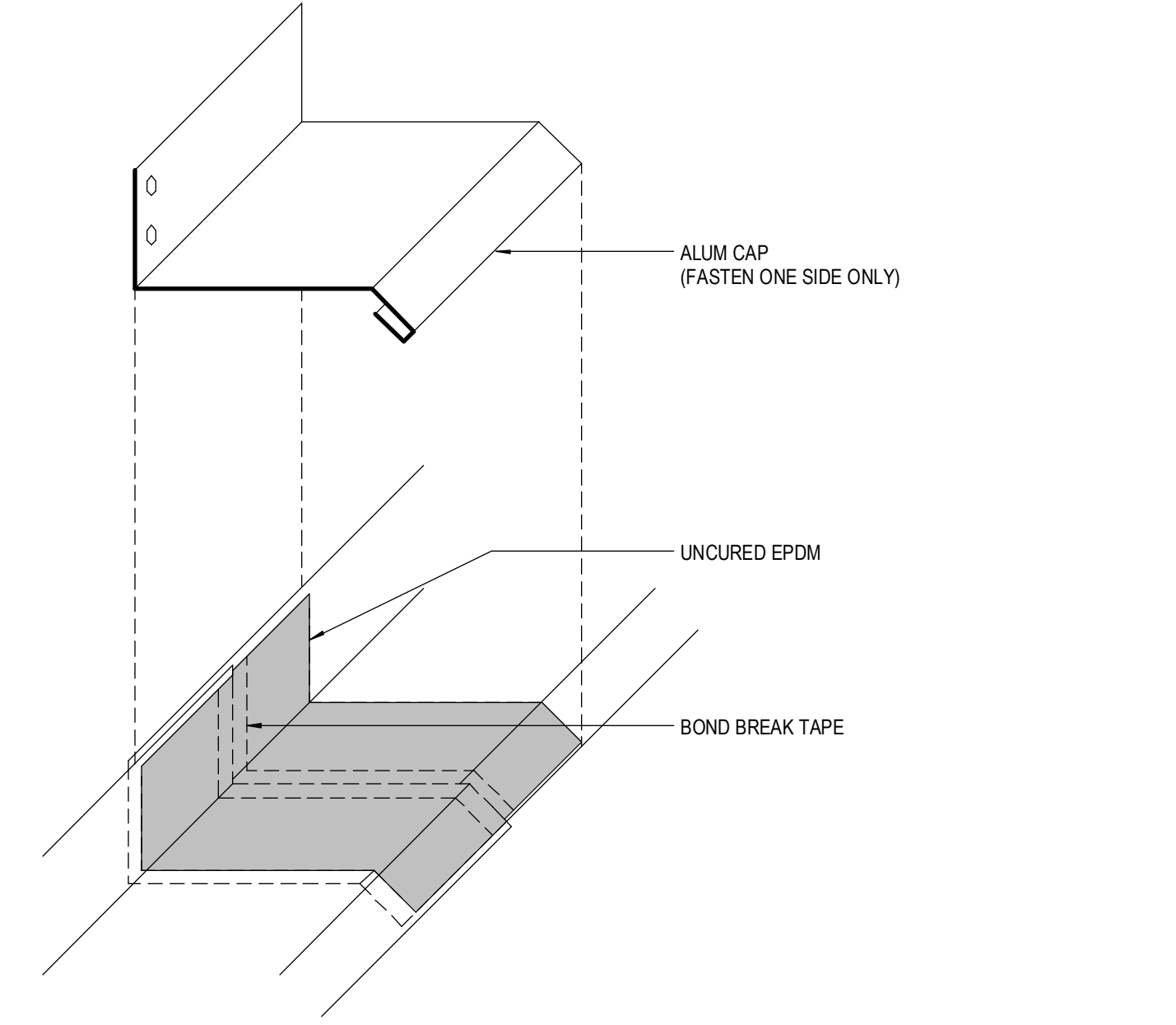
4 CWE1 - PARAPET
1 1/2" = 1'-0"



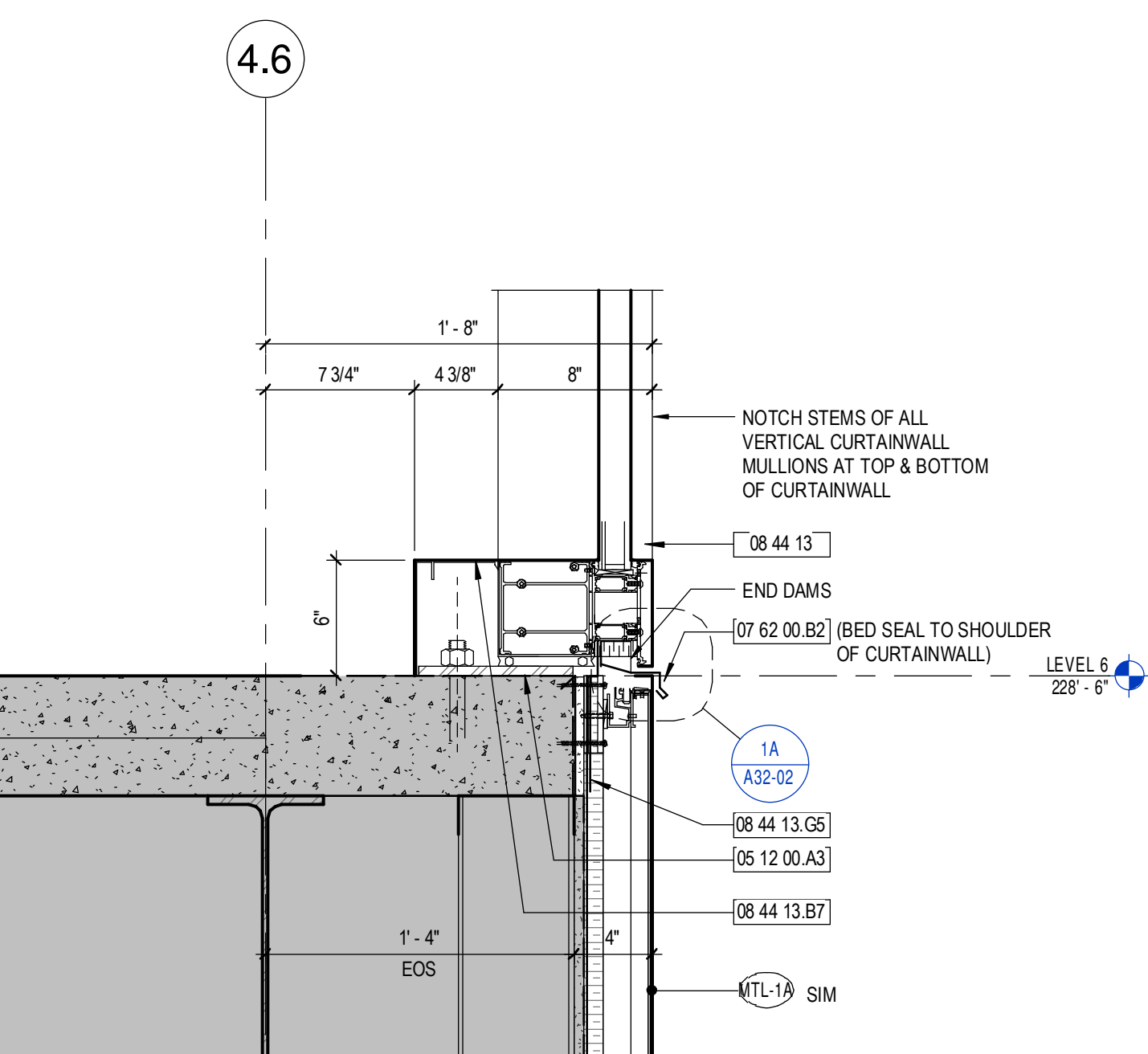
3 CWE1 - LEVEL 7
1 1/2" = 1'-0"



2 CWE1 - LEVEL 5
1 1/2" = 1'-0"



1A FLASHING SPlice
3" = 1'-0"



1 CURTAINWALL CWL1 - LEVEL 6
1 1/2" = 1'-0"

3/29/2018 5:07:59 PM
152181.MDC East Tower 6 & 7 (0217)_detailed.rvt