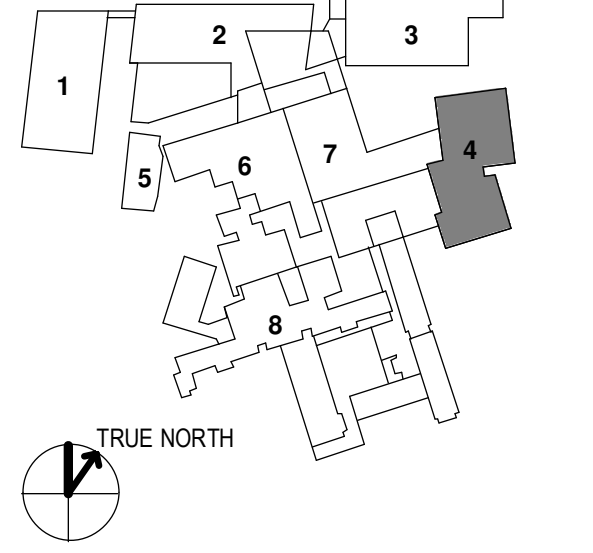


- 1 - GILMAN GARAGE
- 2 - CONGRESS STREET
- 3 - VISITOR GARAGE
- 4 - EAST TOWER
- 5 - CENTRAL UTILITY PLANT
- 6 - BEAN BUILDING
- 7 - RICHARDS BUILDING
- 8 - MAINE GENERAL BUILDING

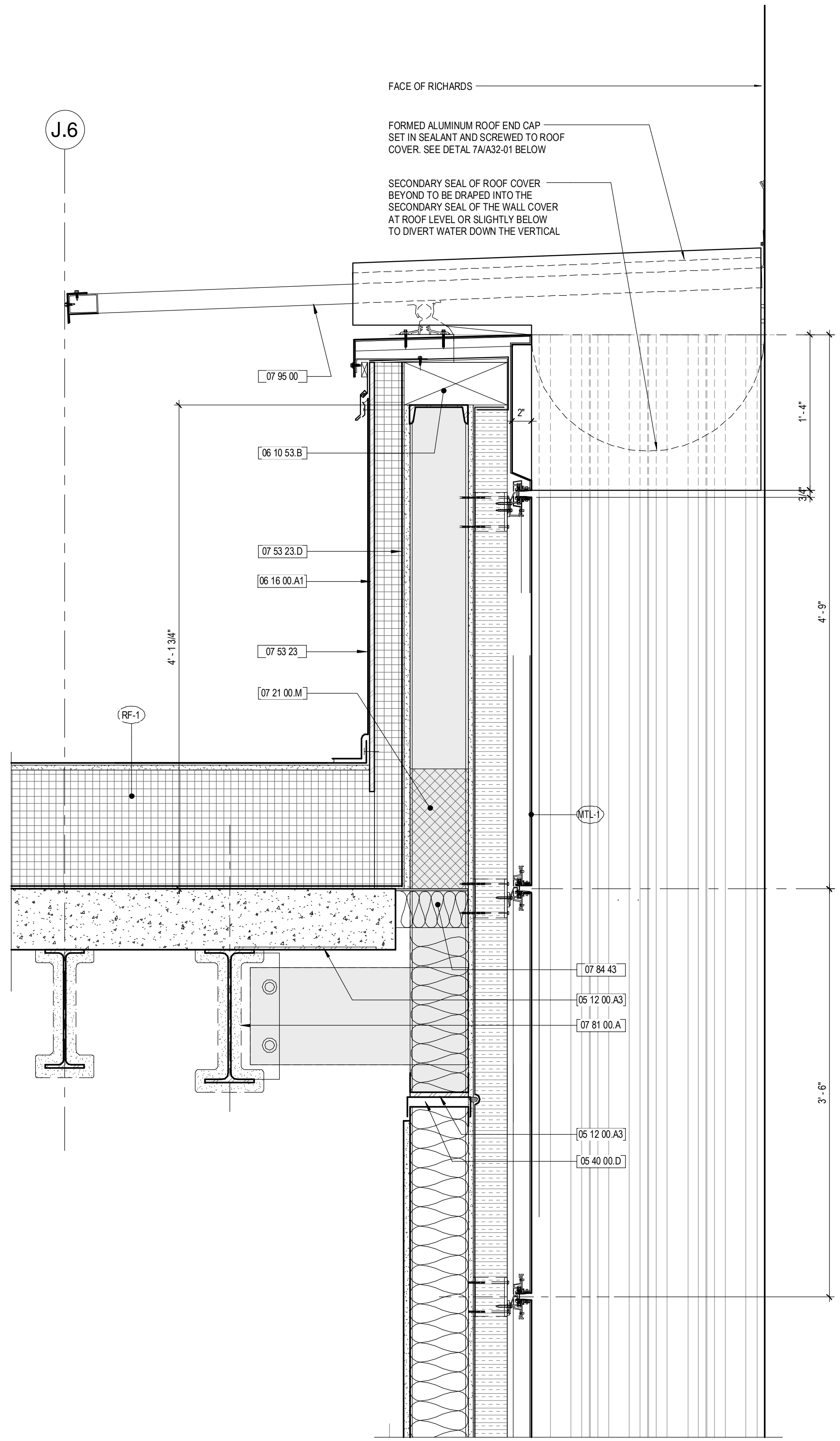


NO	ISSUE	DATE
2	ADDENDUM NO. 2	3/28/18
1	ADDENDUM NO. 1	3/22/18
NO	ISSUE	DATE

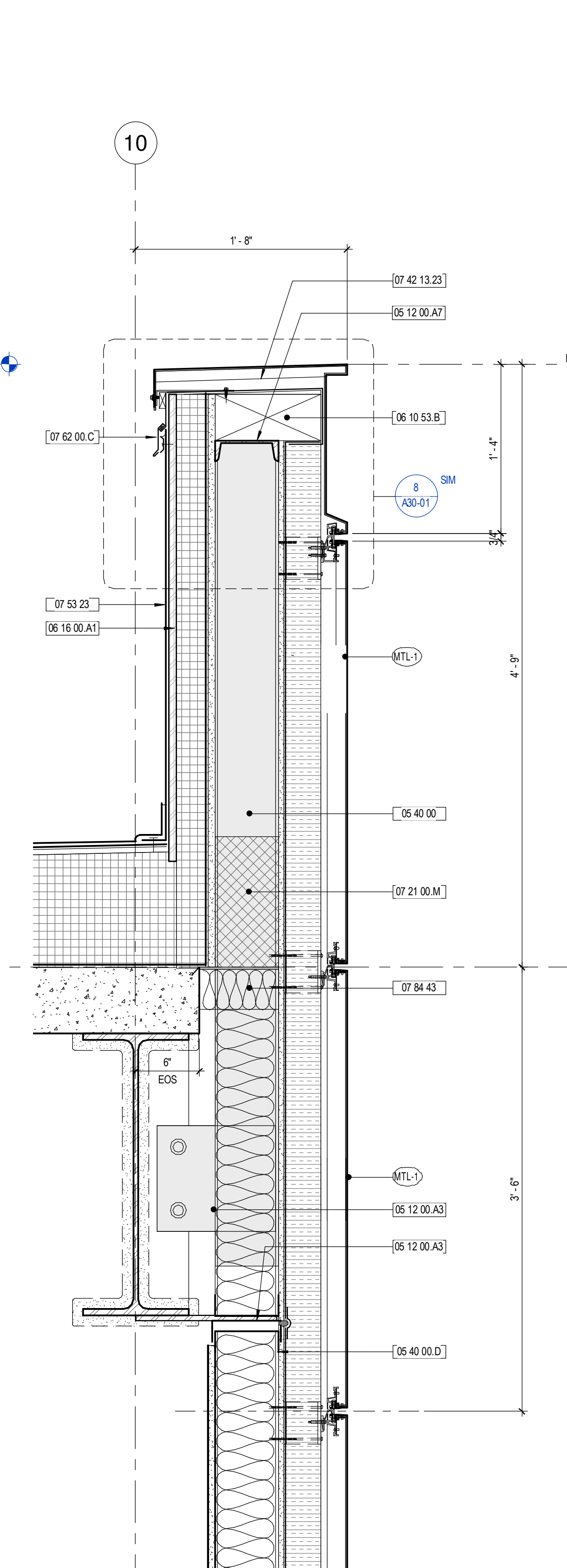
Job Number 152181.000
Drawn TEAM
Checked JK
Approved JK

KEYNOTES

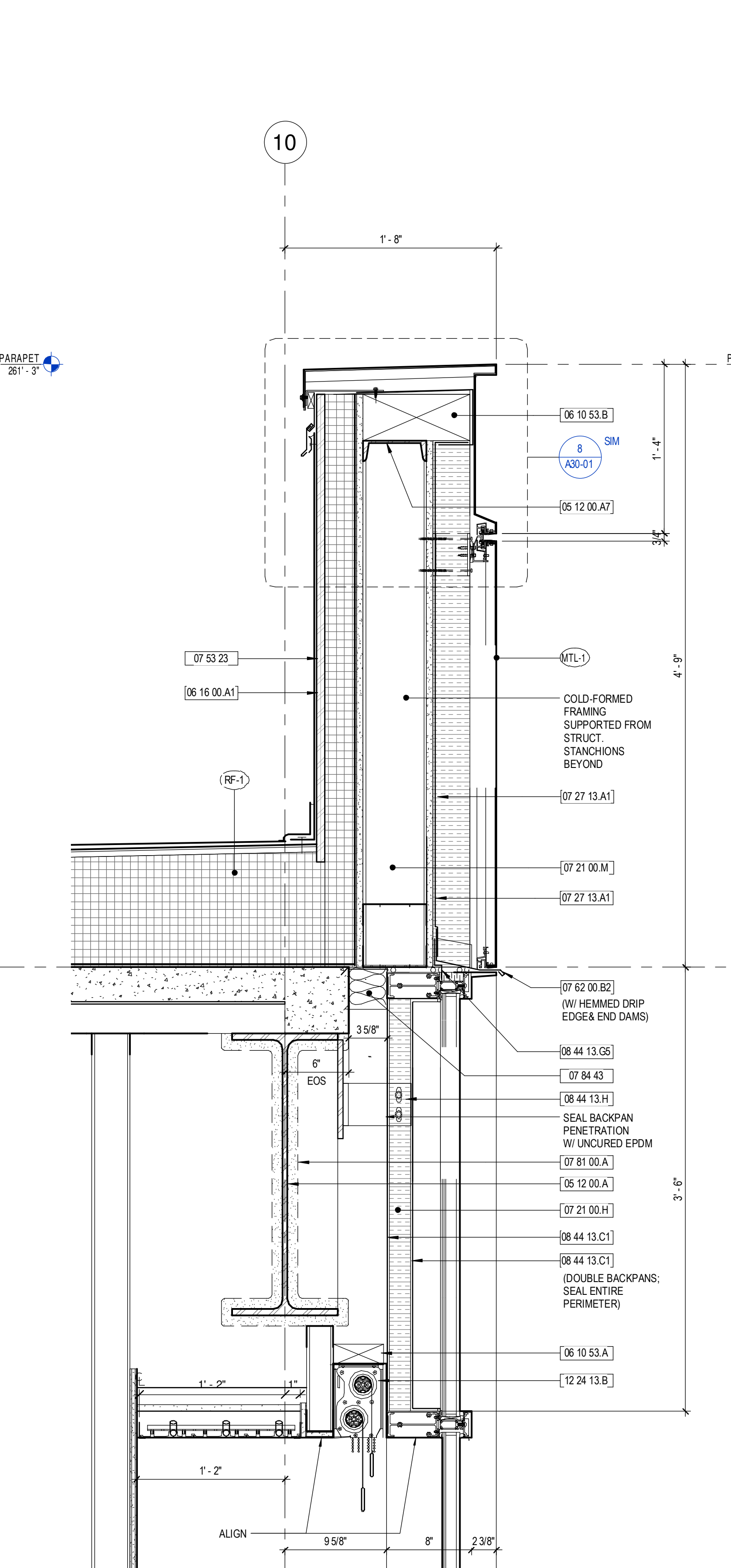
- 05 12 00.A STL BEAM
- 05 12 00.A2 STL ANGLE
- 05 12 00.A3 STL PL
- 05 12 00.A7 STL CHANNEL
- 05 40 00 COLD-FORMED METAL FRAMING
- 05 40 00.D VERTICAL DEFLECTION CLIP
- 05 40 00.M FIBERGLASS THERMAL CLIP
- 05 10 53.A PRESSURE-TREATED WOOD BLOCKING
- 05 10 53.B FIRE RETARDANT-TREATED WOOD BLOCKING
- 05 10 50.A1 FIRE RETARDANT TREATED PLYWOOD
- 07 21 00.H MINERAL WOOL Batts
- 07 21 00.H CLOSED-CELL SPRAY POLYURETHANE FOAM
- 07 27 13.A1 NON-PERMEABLE MEMBRANE AIR BARRIER
- 07 42 13.23 METAL COMPOSITE MATERIAL WALL PANELS
- 07 53 23 ETHYLENE-PROPYLENE-DIENE-MONOMER (EPDM) ROOFING
- 07 53 23.D VAPOR BARRIER
- 07 62 00.B2 ALUM FLASHING
- 07 62 00.C COUNTERFLASHING AND REGLET
- 07 81 00.A SPRAYED FIRE RESISTIVE MATERIAL
- 07 84 43 JOINT FIRESTOPPING
- 07 82 00 JOINT SEALANTS
- 07 56 00 EXPANSION CONTROL
- 05 44 13 GLAZED ALUMINUM CURTAIN WALLS
- 05 44 13.B ALUM STOOD TRIM
- 05 44 13.C1 CURTAIN WALL BACK PAN
- 05 44 13.G SILICONE FLASHING SHEET
- 05 44 13.H CURTAIN WALL ANCHOR
- 12 24 13.B MANUALLY OPERATED ROLLER SHADE



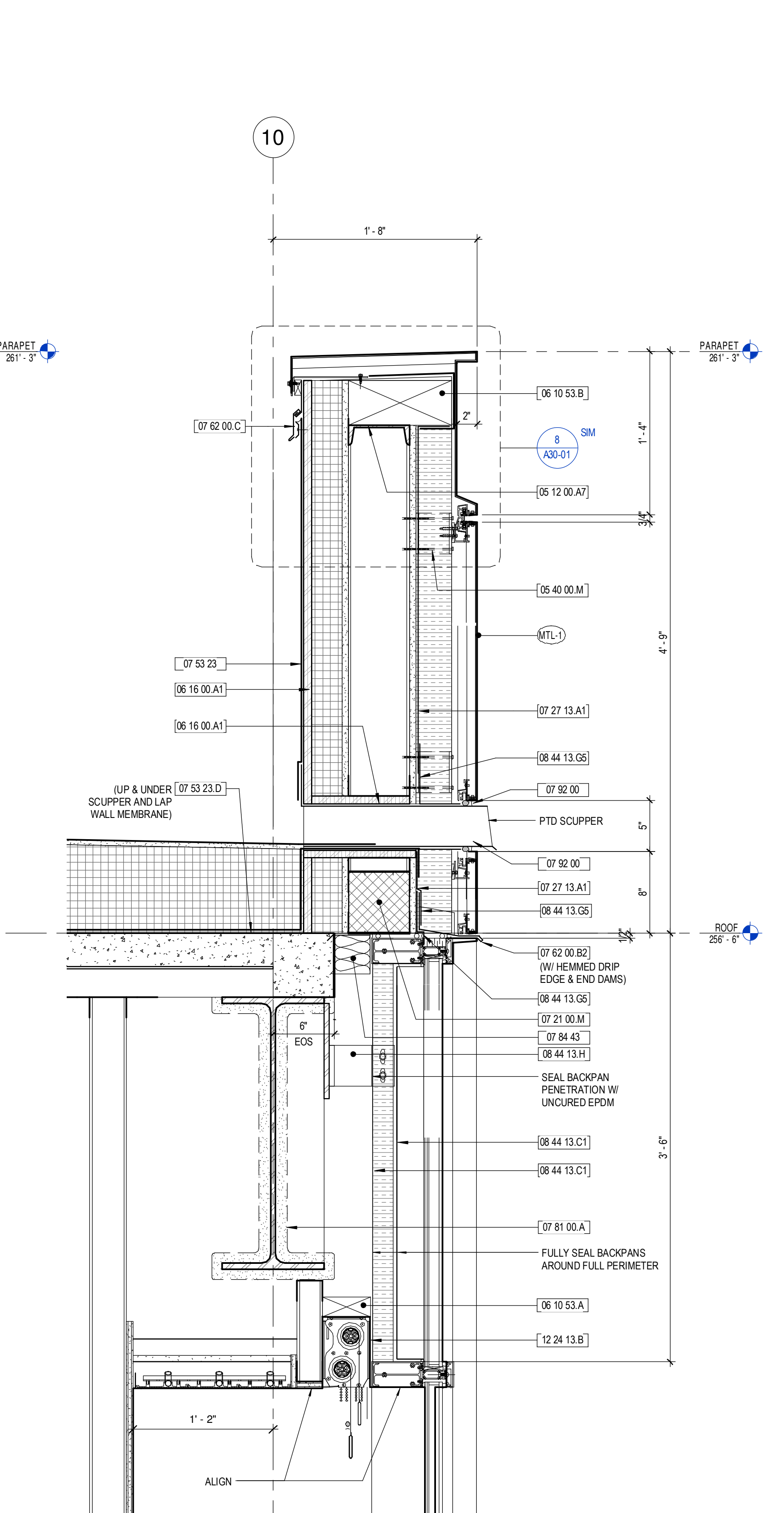
7 SEISMIC ROOF COVER - END CONDITION
1 1/2" = 1'-0"



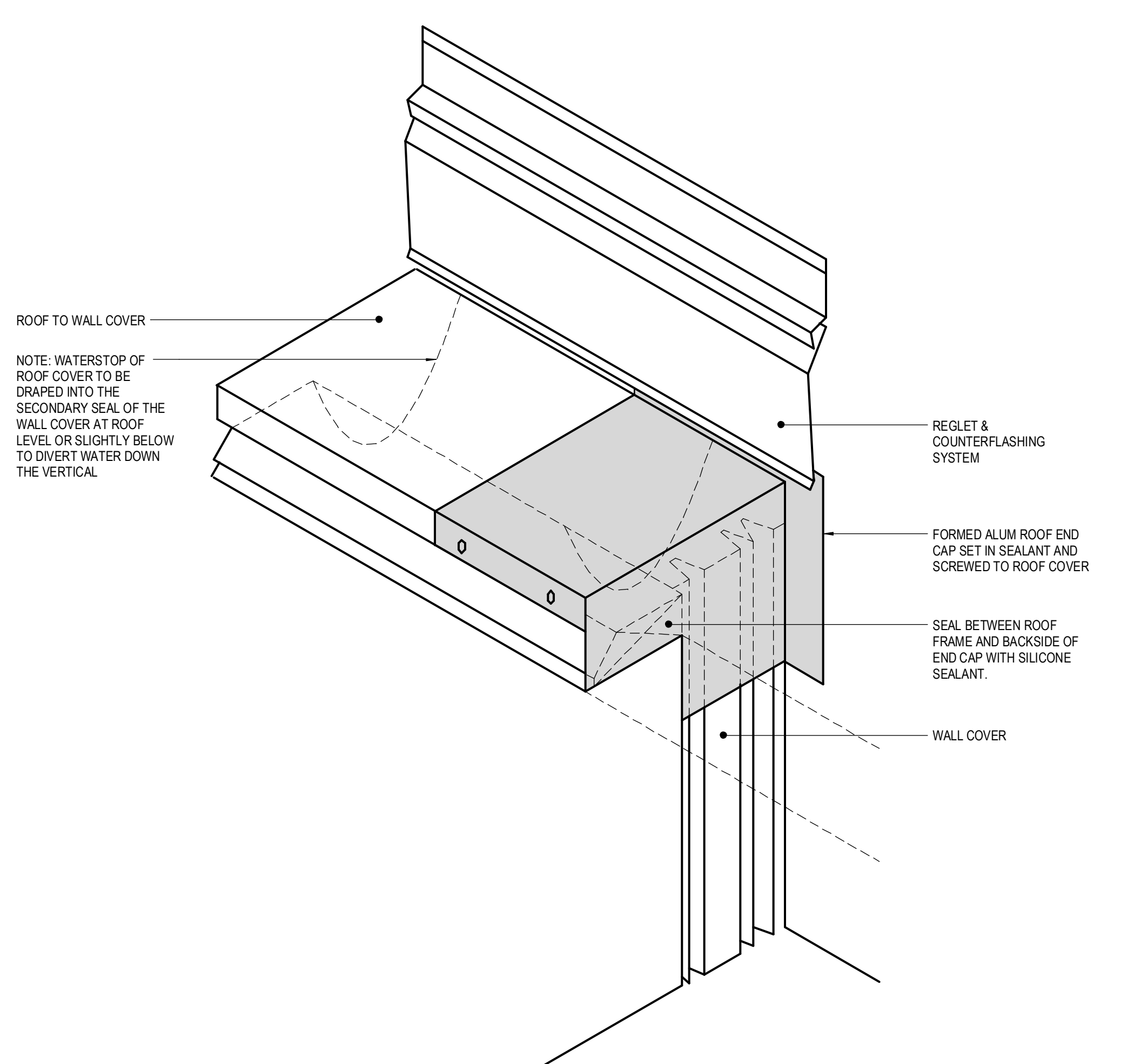
6 RAINSCREEN - PARAPET
1 1/2" = 1'-0"



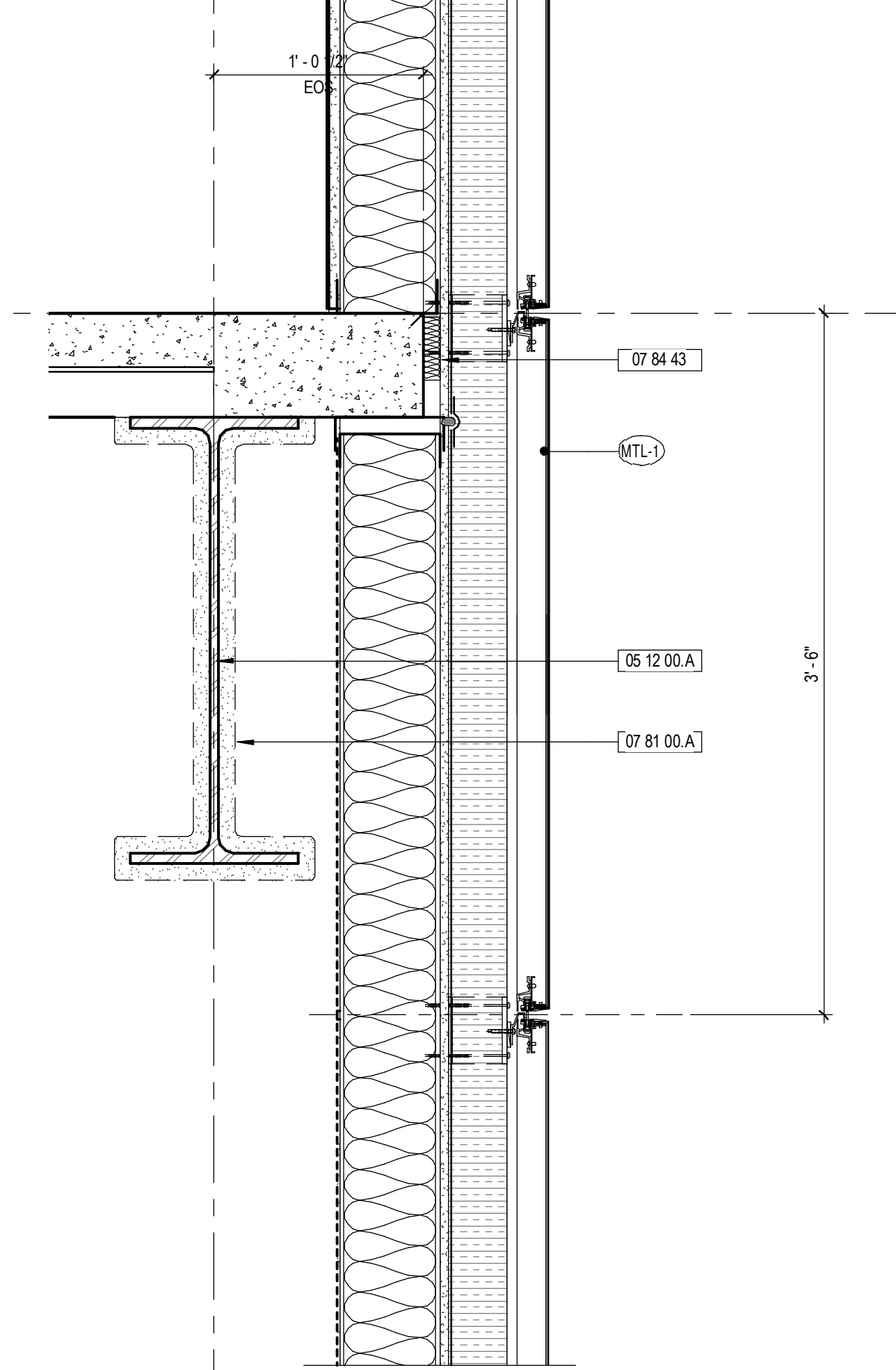
4 CURTAINWALL - PARAPET
1 1/2" = 1'-0"



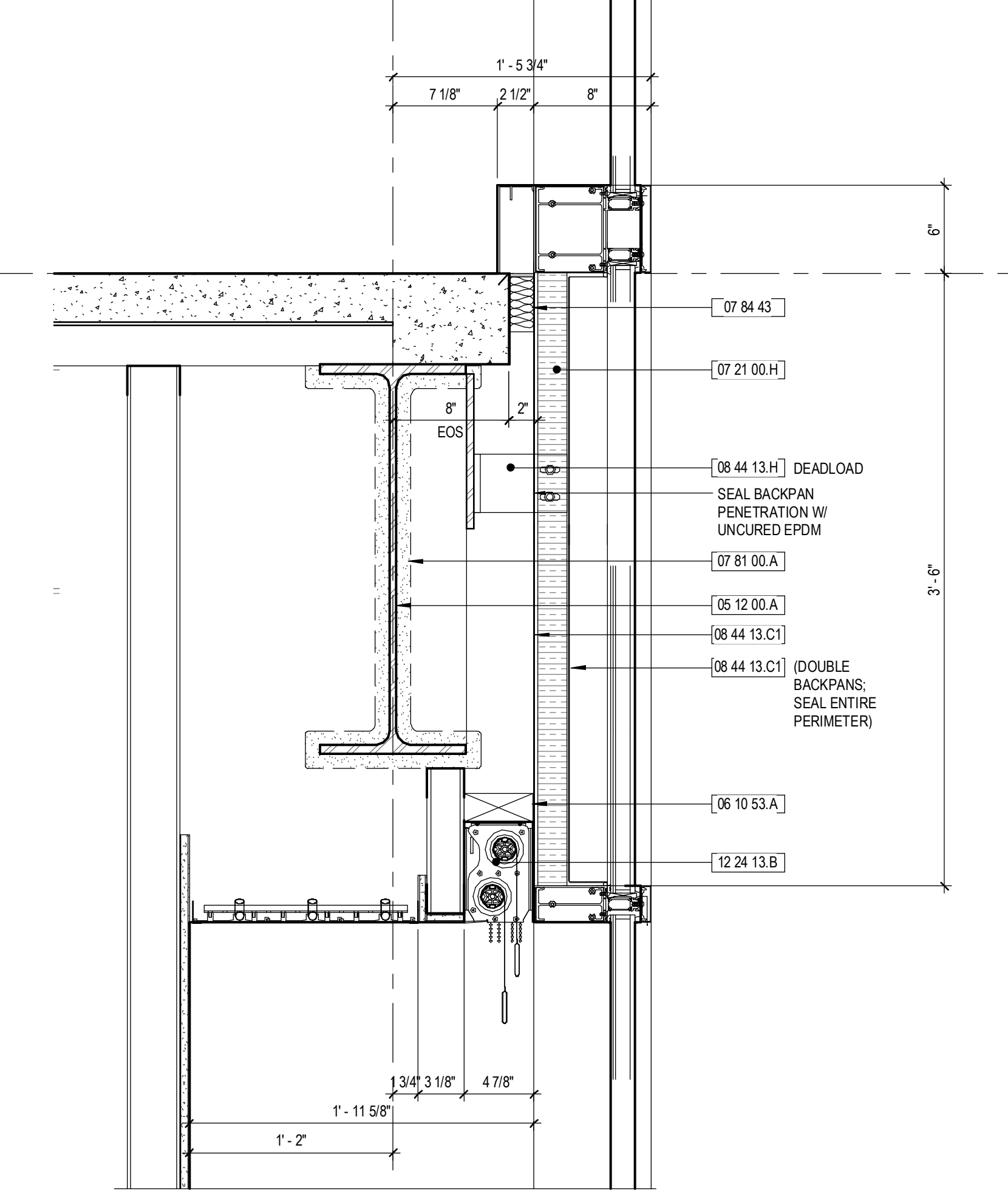
2 CURTAINWALL - SCUPPER
1 1/2" = 1'-0"



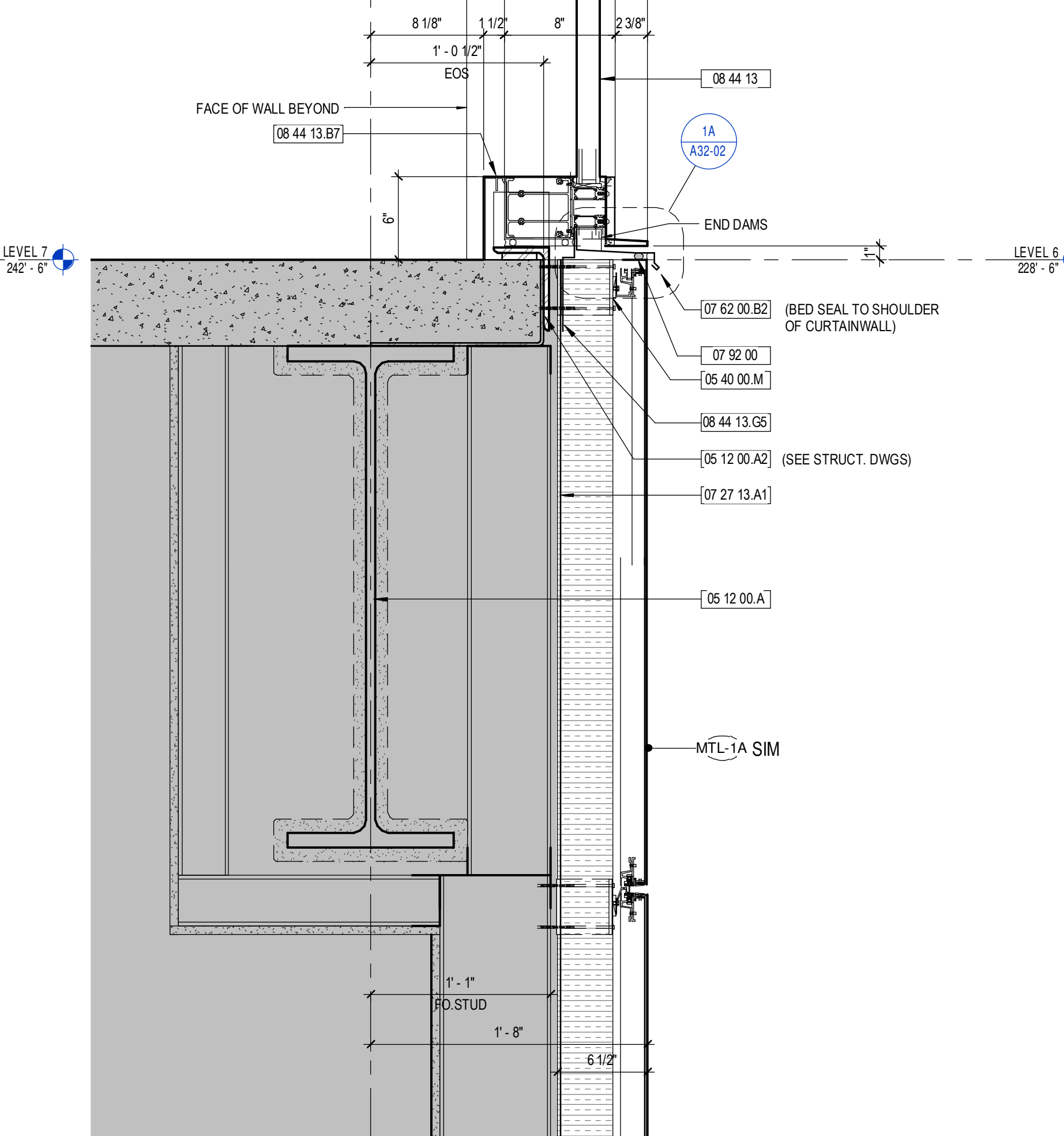
7A EXPANSION JOINT TRANSITION
3" = 1'-0"



5 RAINSCREEN - LEVEL 7
1 1/2" = 1'-0"



3 CURTAINWALL - LEVEL 7
1 1/2" = 1'-0"



1 CURTAINWALL - LEVEL 6
1 1/2" = 1'-0"