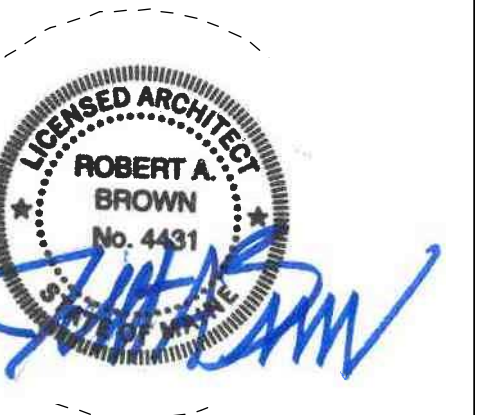


CONSULTANTS

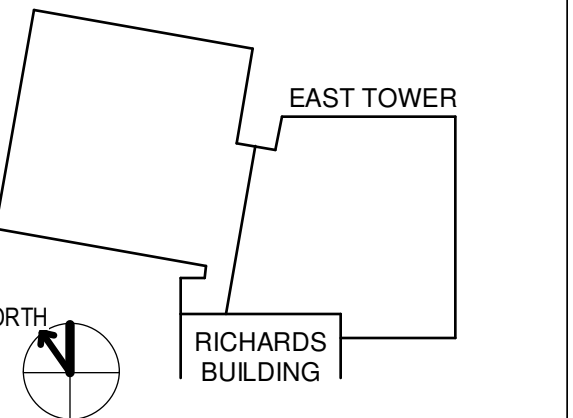
- CVL LANDSCAPE ARCHITECT
Sebago Technics
 75 John Roberts Road, Suite
 1A, South Portland ME 04106
- STRUCTURAL ENG. BUILDING ENVELOPE CONSULTANT
Shapiro Gumpertz & Hager Inc.
 41 Severyn Street, Building 1, Suite 500,
 Waltham MA 02453
- MEP ENGINEER/ CODE
AKF Group LLC
 99 Bedford Street, 2nd Floor, Boston MA 02111
- CONSTRUCTION MANAGER
Turner Construction
 2 Seaport Lane, Suite 200, Boston MA 02210
- ELEVATOR CONSULTANT
VDA (Van Dusen & Associates)
 101 Summer Street, 4th Floor, Boston MA
 02110
- COST ESTIMATOR
D. G. Jones International
 3 Baldwin Green Common, Suite 202, Woburn MA 01801

PROJECT TITLE

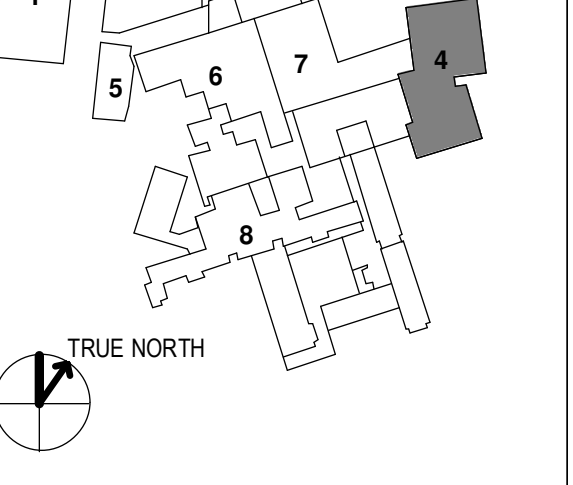
**East Tower 6 & 7
 Addition**
 22 Bramhall Street
 Portland ME 04102



KEY PLANS



- OVERALL KEY PLAN
- 1 - GILMAN GARAGE
 - 2 - CONGRESS STREET
 - 3 - VISITOR GARAGE
 - 4 - EAST TOWER
 - 5 - CENTRAL UTILITY PLANT
 - 6 - BEAN BUILDING
 - 7 - RICHARDS BUILDING
 - 8 - MAINE GENERAL BUILDING



CONSTRUCTION DOCUMENTS
 JANUARY 26, 2018

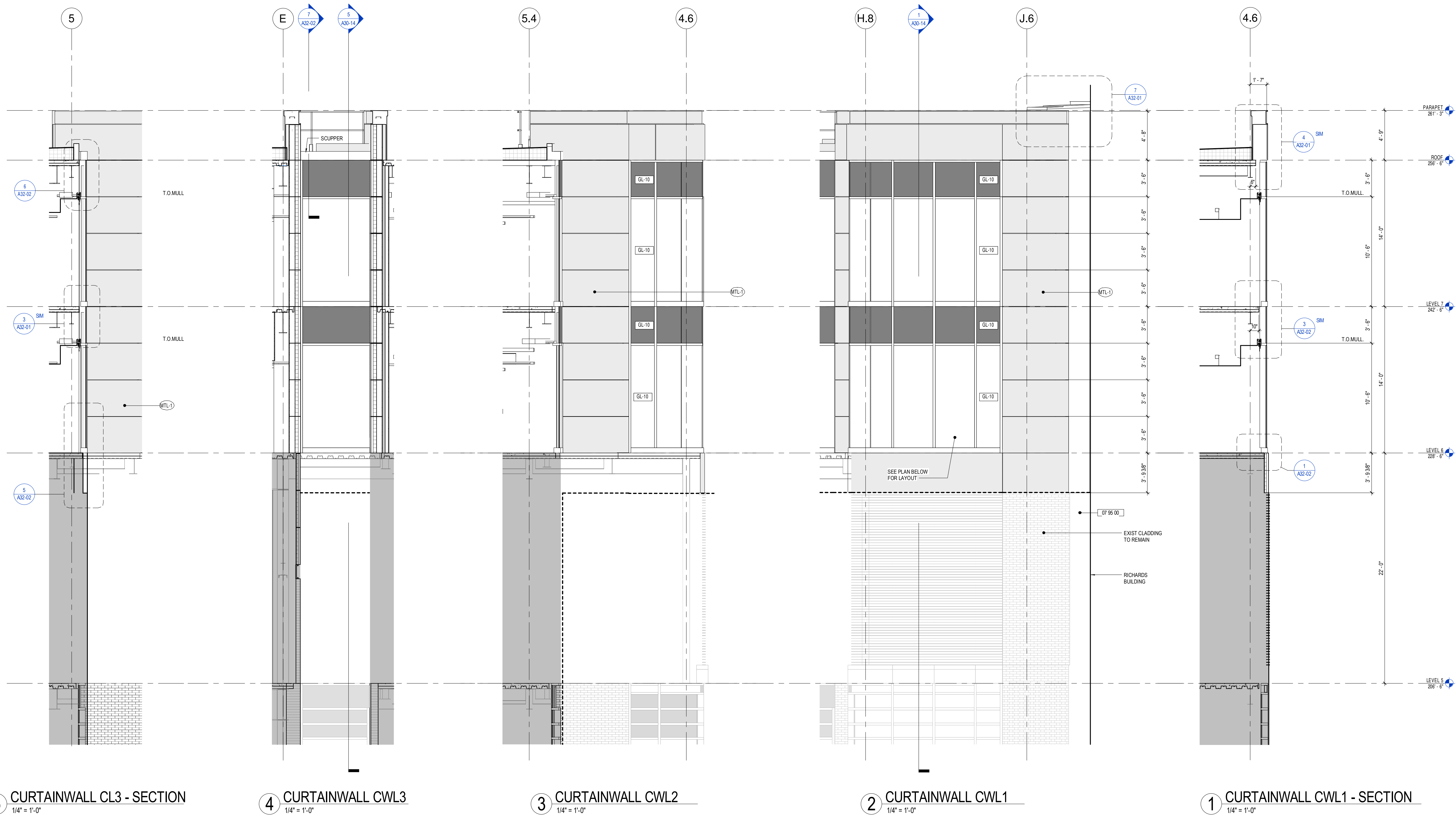
NO	ISSUE	DATE
1	ADDENDUM NO. 1	3/22/18

Job Number 152181.000
 Drawn TEAM
 Checked JK
 Approved JK

TITLE
**ENLARGED
 ELEVATIONS -
 CWL**

SHEET NUMBER

A30-14



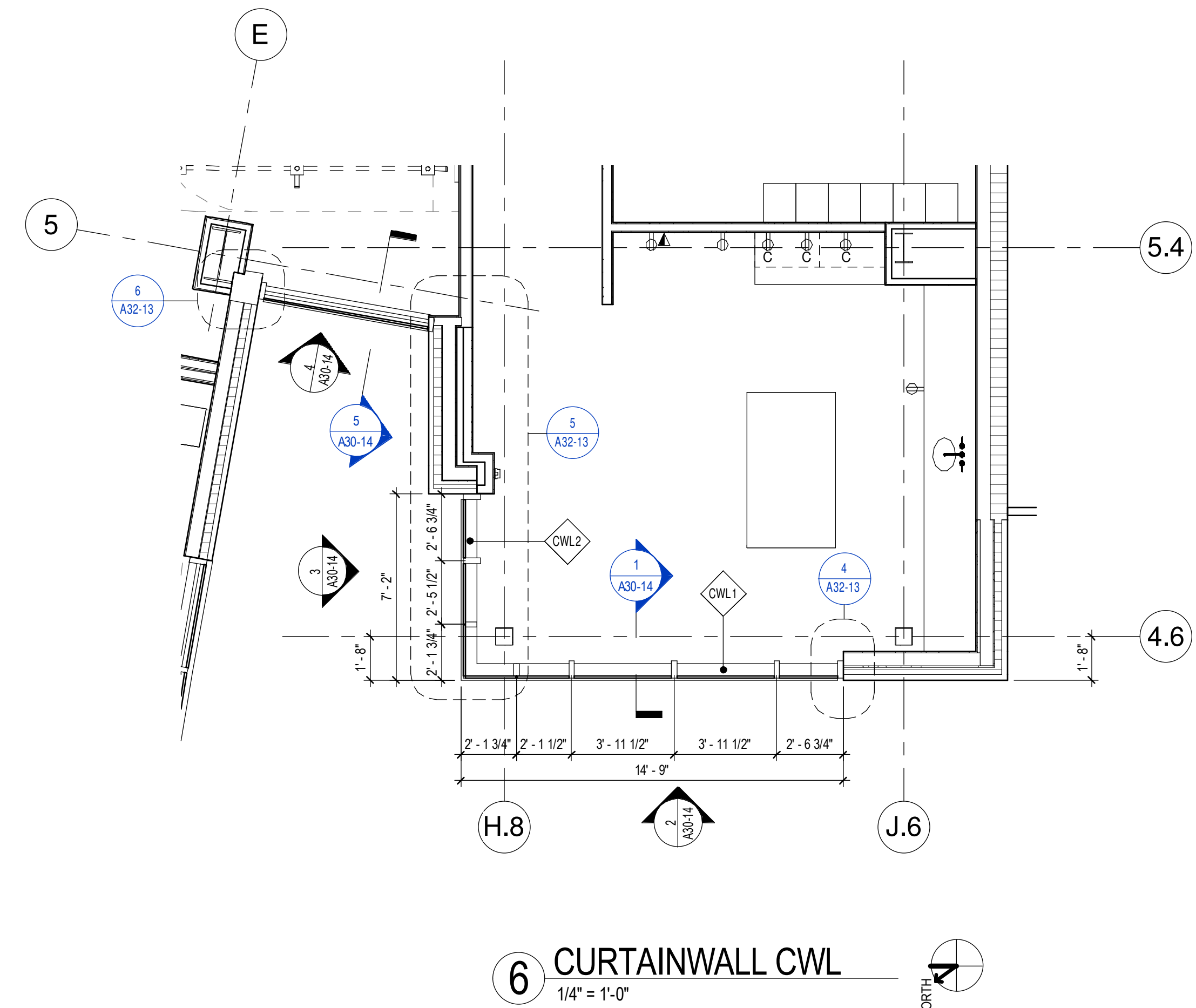
5 CURTAINWALL CL3 - SECTION
 1/4" = 1'-0"

4 CURTAINWALL CWL3
 1/4" = 1'-0"

3 CURTAINWALL CWL2
 1/4" = 1'-0"

2 CURTAINWALL CWL1
 1/4" = 1'-0"

1 CURTAINWALL CWL1 - SECTION
 1/4" = 1'-0"



6 CURTAINWALL CWL
 1/4" = 1'-0"

GLAZING TYPES

GL-10	1 3/4" IGU - LOW E - HEAT STRENGTHENED W/ LAMINATED INNER LITES
L-1A	FIXED LOUVERS, SEE SPEC 0890 00