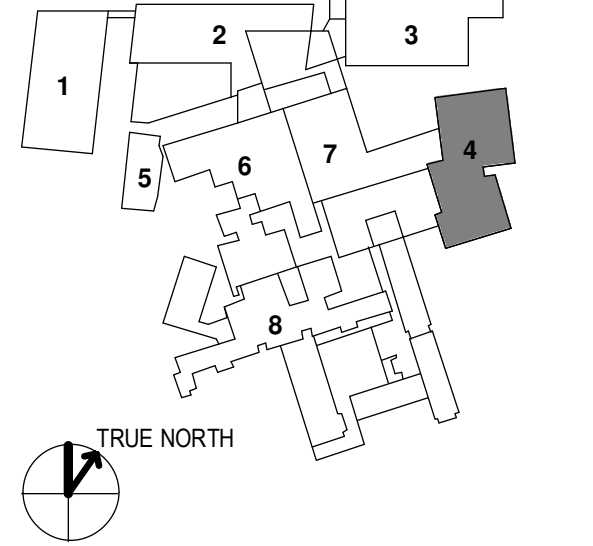
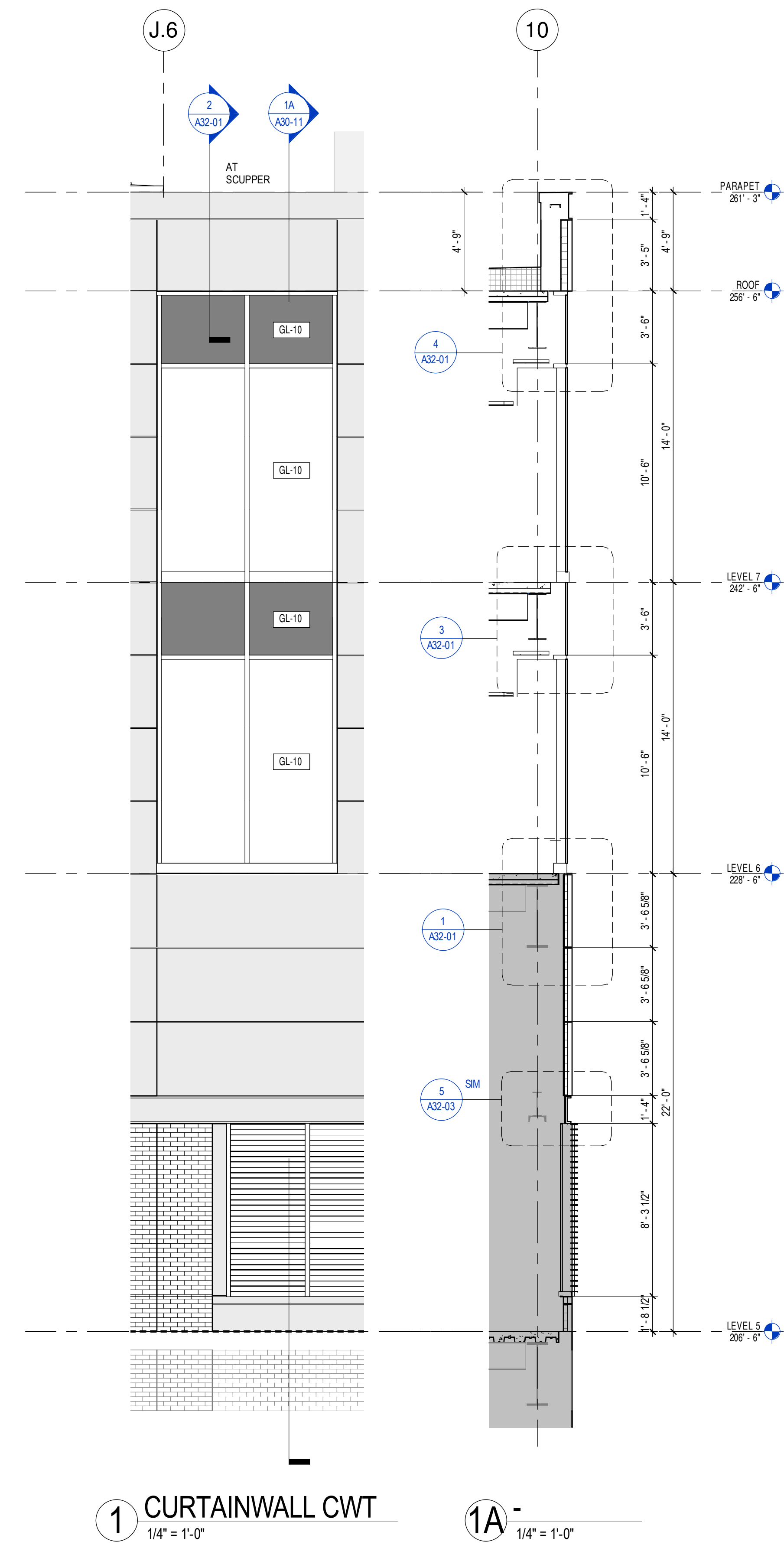
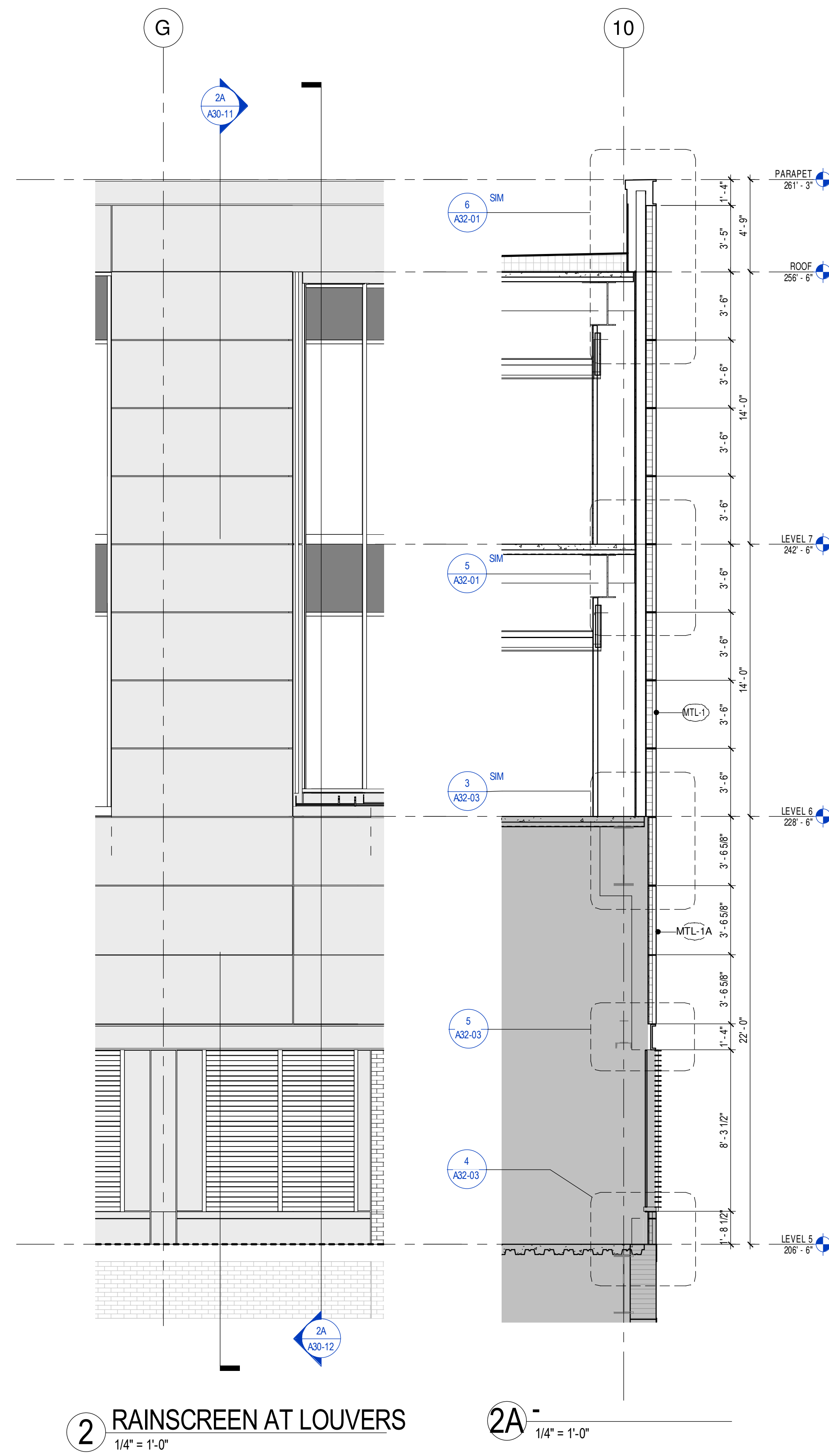
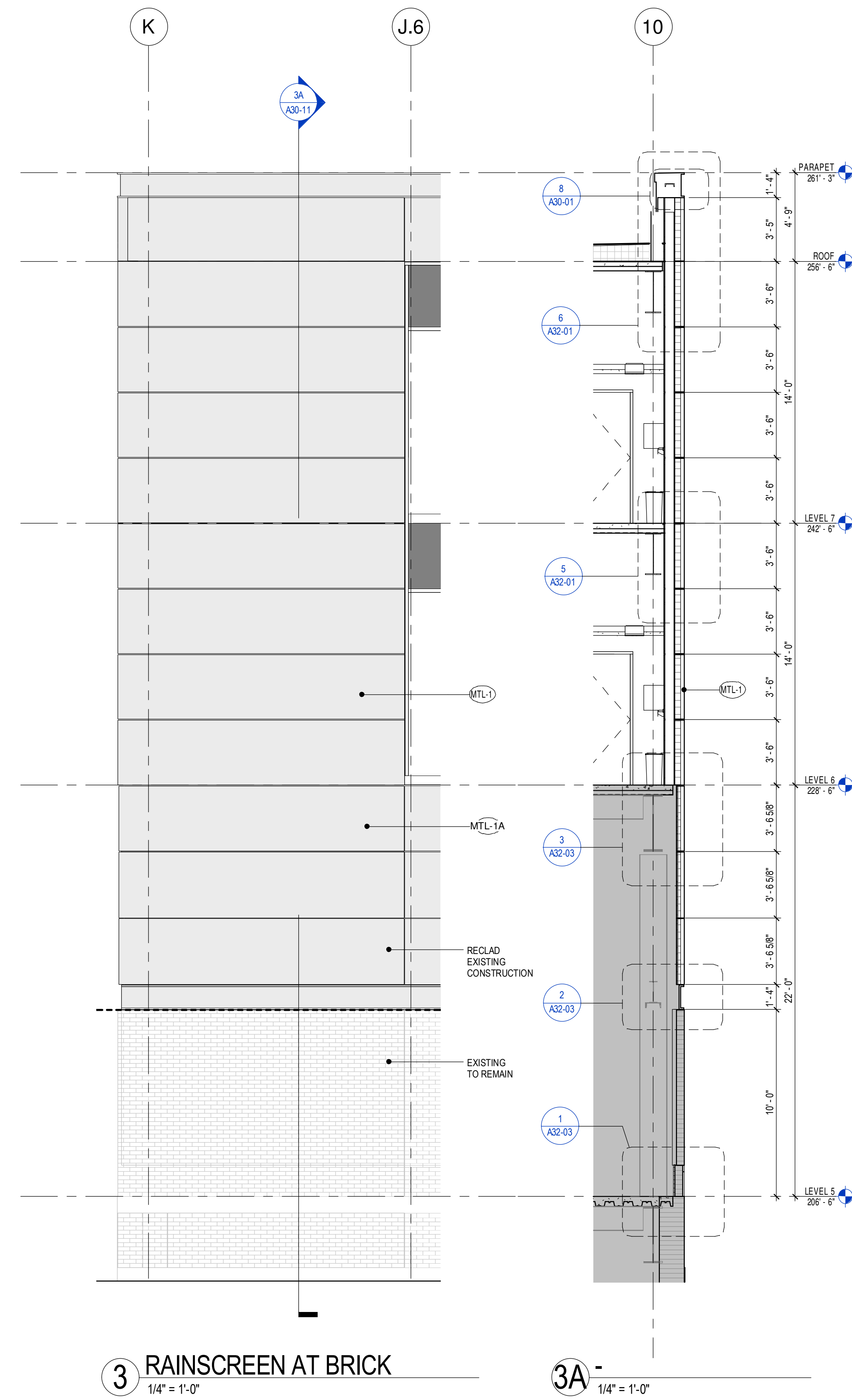


- 1 - GILMAN GARAGE
- 2 - CONGRESS STREET
- 3 - VISITOR GARAGE
- 4 - EAST TOWER
- 5 - CENTRAL UTILITY PLANT
- 6 - BEAN BUILDING
- 7 - RICHARDS BUILDING
- 8 - MAINE GENERAL BUILDING



NO.	ISSUE	DATE

Job Number 152181.000
Drawn TEAM
Checked JK
Approved JK



GLAZING TYPES

GL-10	1 1/4" IGU - LOW E - HEAT STRENGTHENED W/ LAMINATED INNER LITES
L-1A	FIXED LOUVERS, SEE SPEC 0890 00