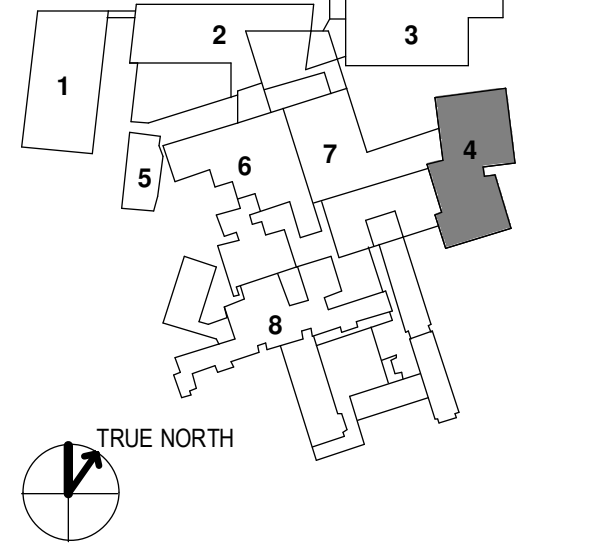


- 1 - GILMAN GARAGE
- 2 - CONGRESS STREET
- 3 - VISITOR GARAGE
- 4 - EAST TOWER
- 5 - CENTRAL UTILITY PLANT
- 6 - BEAN BUILDING
- 7 - RICHARDS BUILDING
- 8 - MAINE GENERAL BUILDING

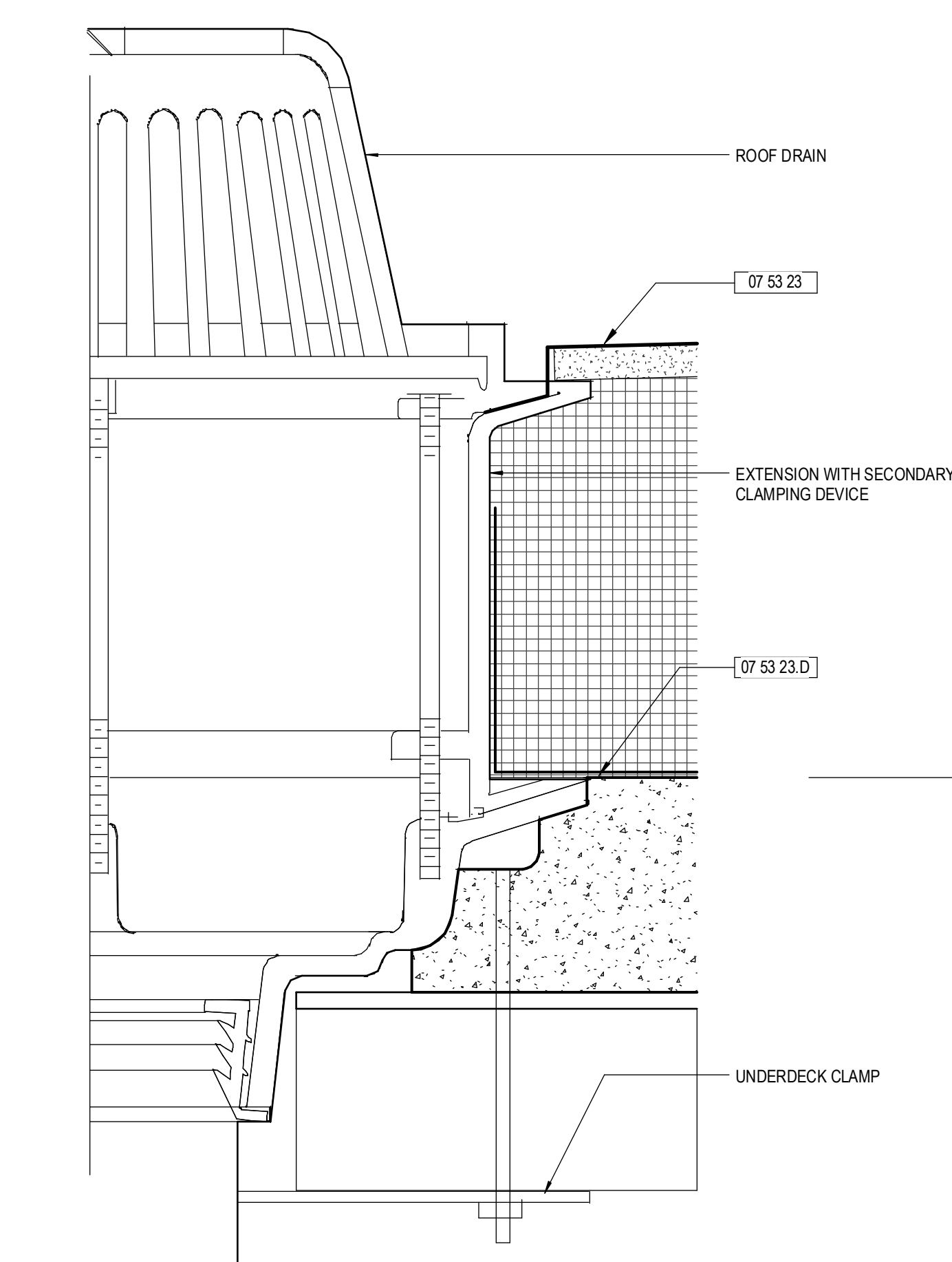


NO	ISSUE	DATE
1	ADDENDUM NO. 1	3/22/18

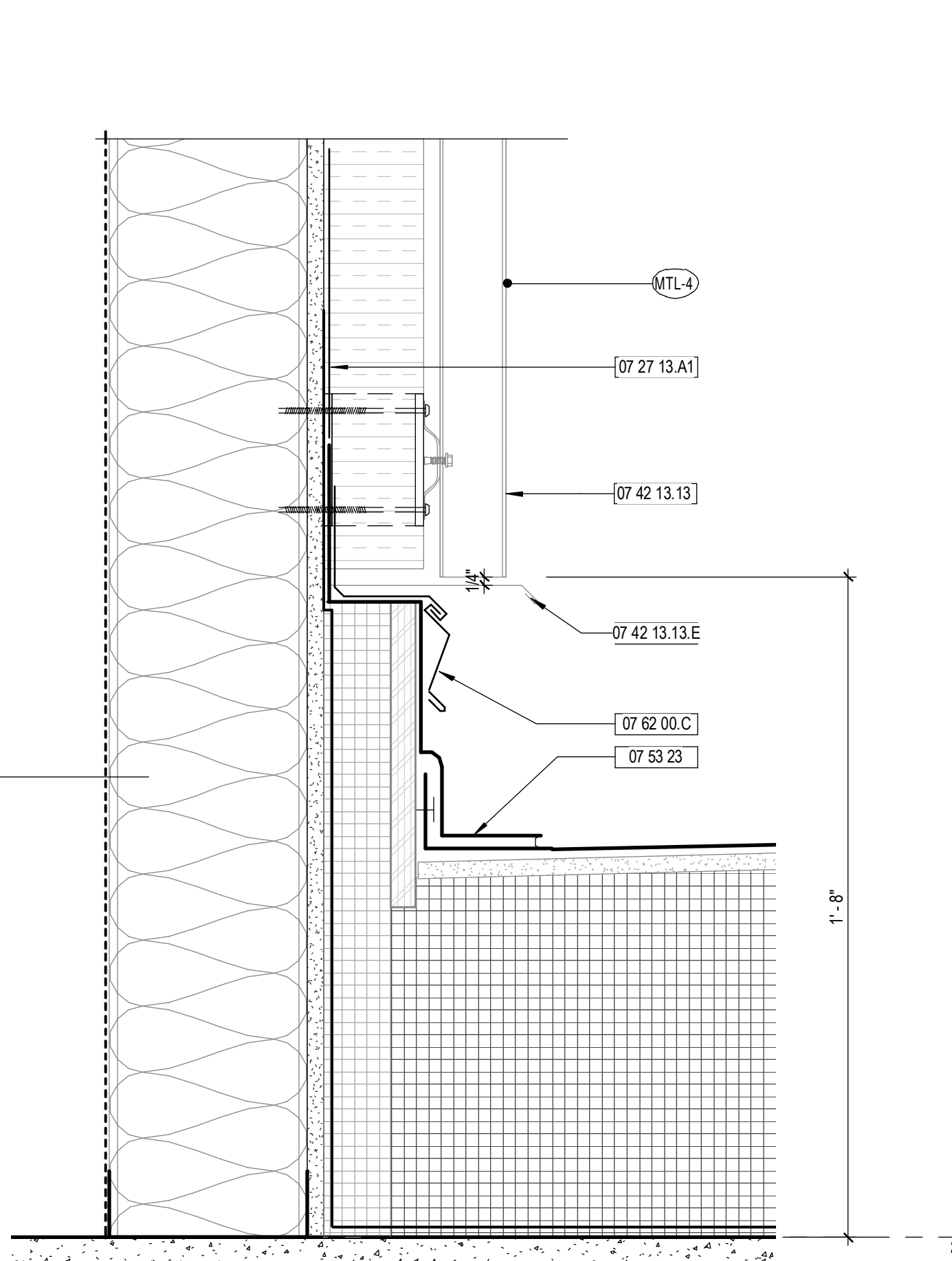
Job Number: 152181.000
Drawn: TEAM
Checked: JK
Approved: JK

KEYNOTES

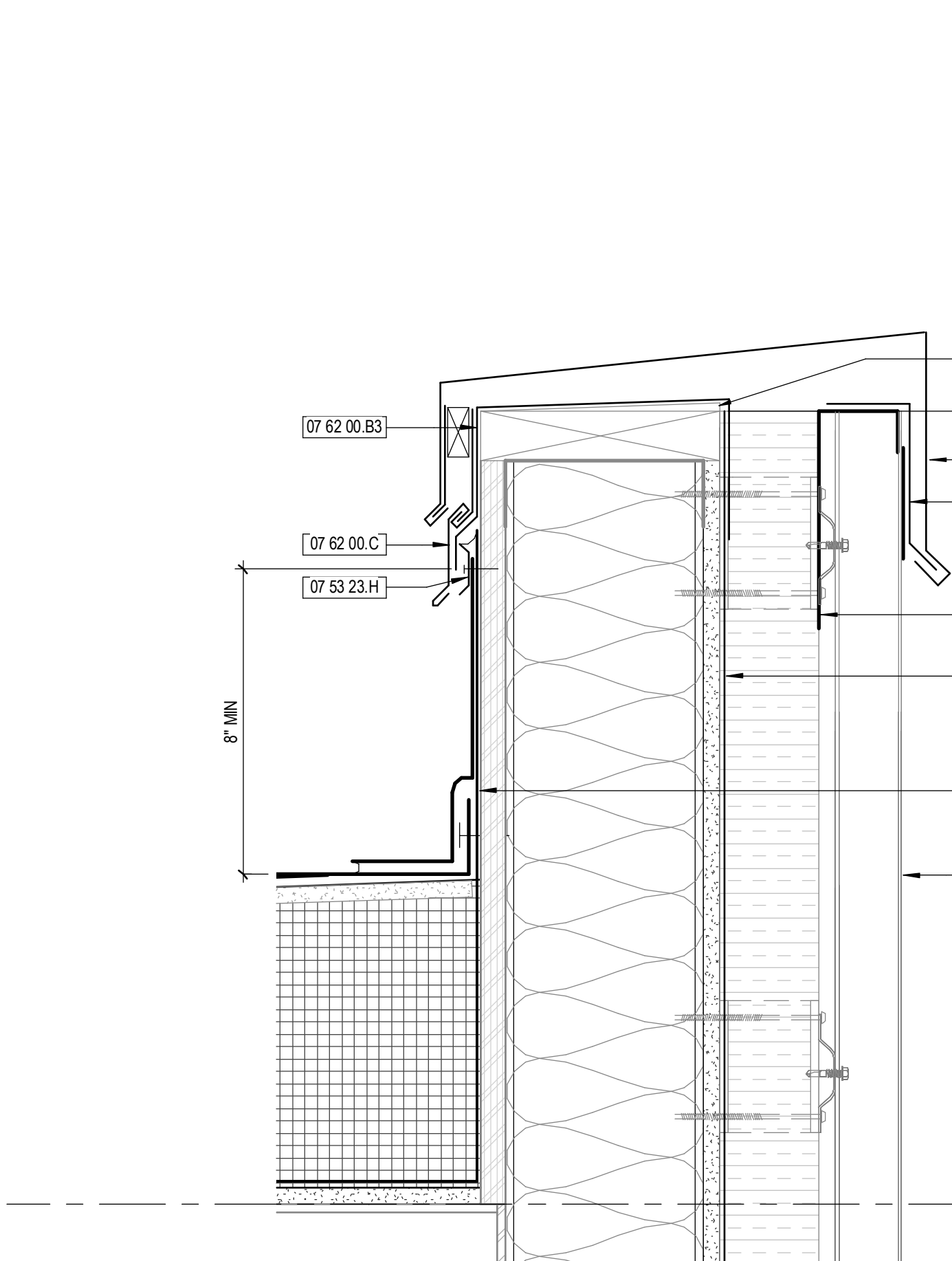
- 03 30 00 D CONC SLAB
- 05 12 00 A5 STL TUBE
- 05 40 00 COLDFORMED METAL FRAMING
- 05 40 00 A1 GALV CFMF
- 05 40 00 M1 FIBERGLASS THERMAL CLIP
- 05 16 00 B3 GLASS-MAT GYPSUM WALL SWEATHING
- 07 21 00 A POLYSTYRO BOARD INSUL
- 07 21 00 E MINERAL WOOL BATT
- 07 21 00 H MINERAL WOOL ISO INS
- 07 21 00 N VAPOR RETARDERS
- 07 27 13 A1 NON PERMEABLE MEMBRANE AIR BARRIER
- 07 42 13 13 FORNED METAL WALL PANELS
- 07 42 13 13 A CAP FLASHING
- 07 42 13 13 E SILL FLASHING
- 07 42 13 19 INSULATED METAL WALL PANELS
- 07 42 13 19 A SILICONE SEALANT
- 07 53 23 ETHYLENE PROPYLENE DIENE MONOMER (EPDM) ROOFING
- 07 53 23 B1 EPDM MEMBRANE FLASHING
- 07 53 23 C GLASS MAT SUBSTRATE BD
- 07 53 23 D VAPOR BARRIER
- 07 53 23 F GLASS MAT COVER BD
- 07 53 23 H MTL TERMINATION BAR
- 07 62 00 SHEET METAL FLASHING AND TRM
- 07 62 00 B2 ALUM FLASHING
- 07 62 00 B3 HIGH TEMPERATURE UNDERLAYMENT
- 07 62 00 C COUNTERFLASHING AND REGLET
- 07 81 00 APPLIED FIREPROOFING
- 08 29 00 GYPSUM BOARD



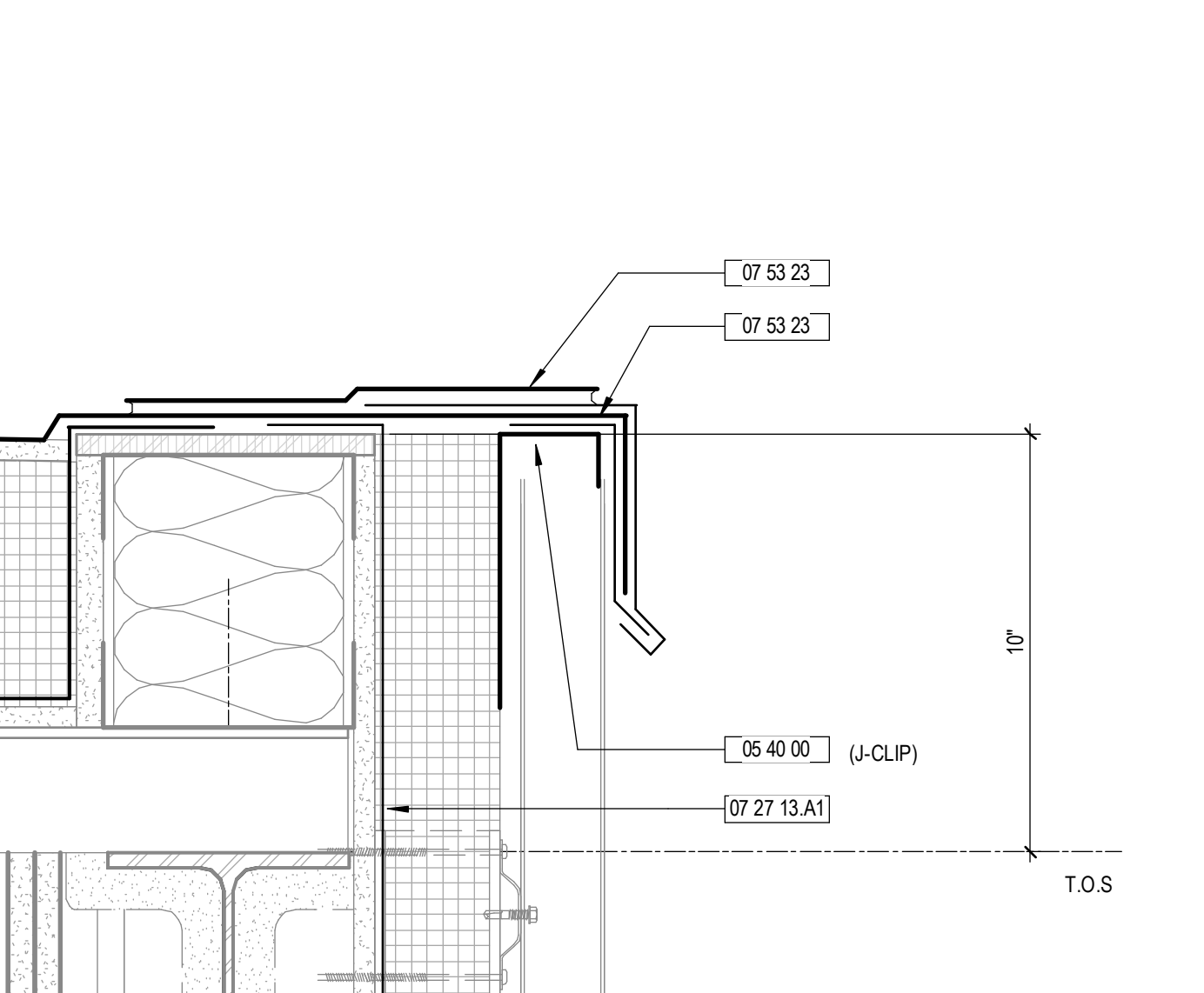
14 ROOF DRAIN
3" = 1'-0"



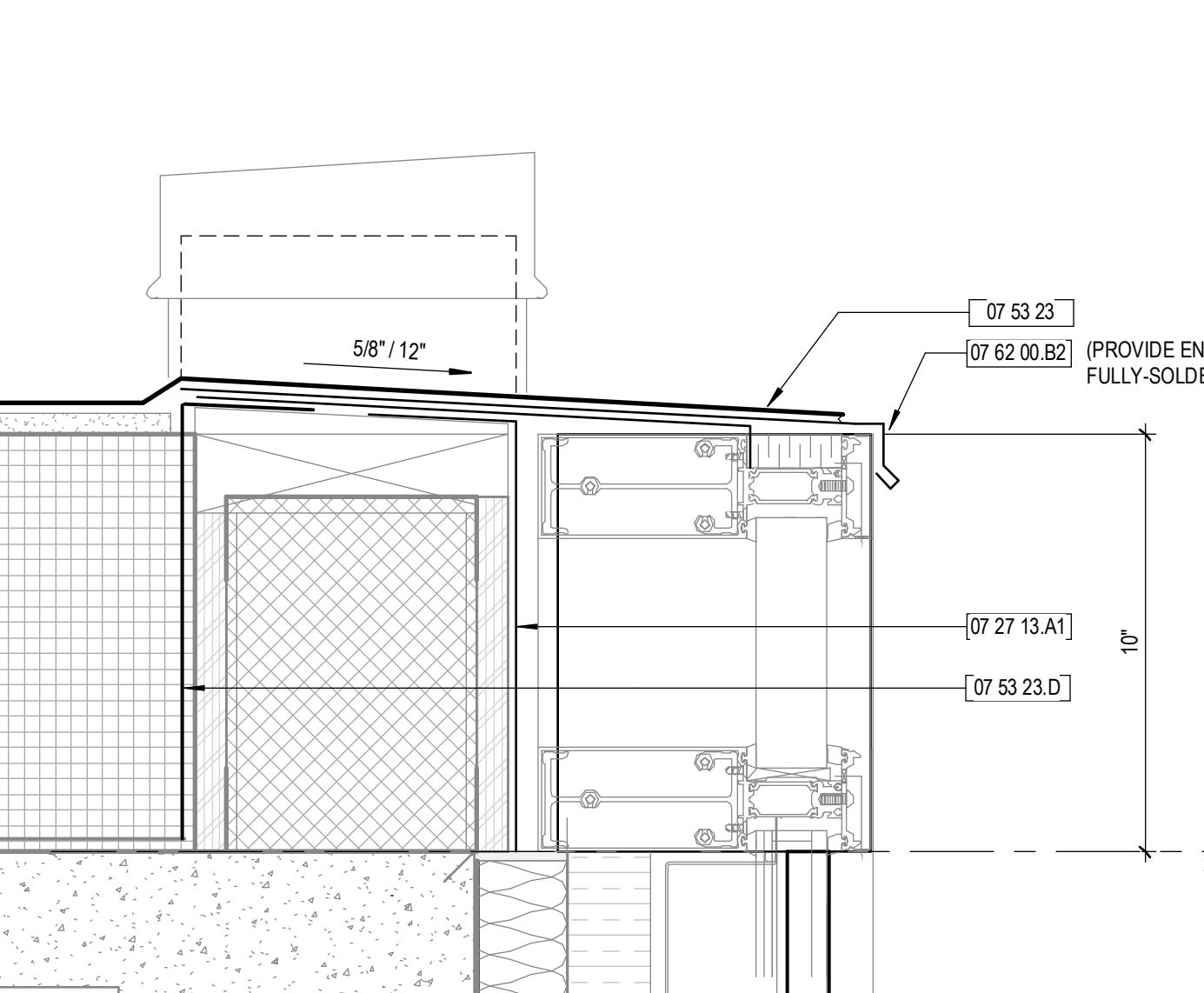
13 FORMED WALL AT ROOF
3" = 1'-0"



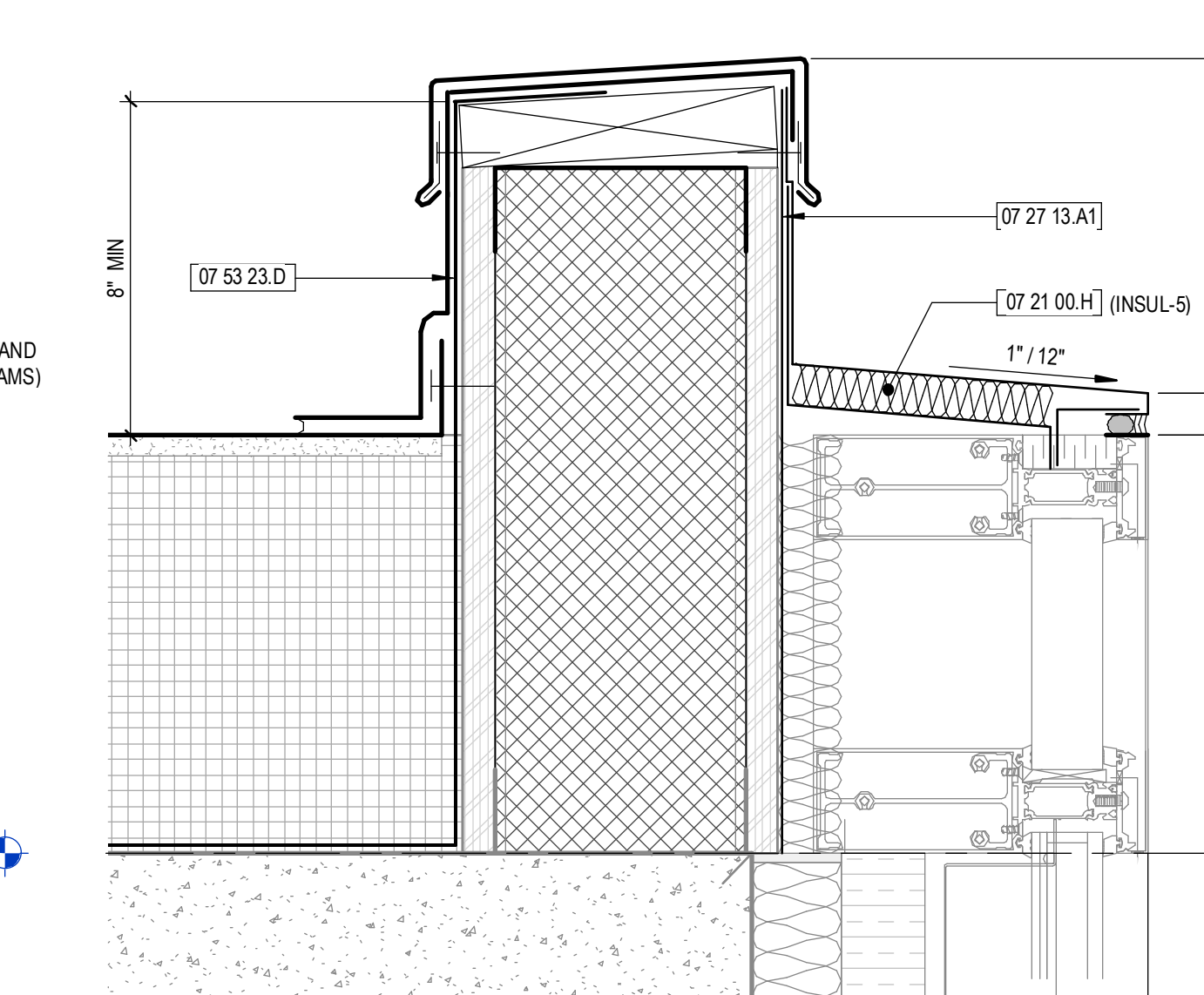
12 HOISTWAY COPING
3" = 1'-0"



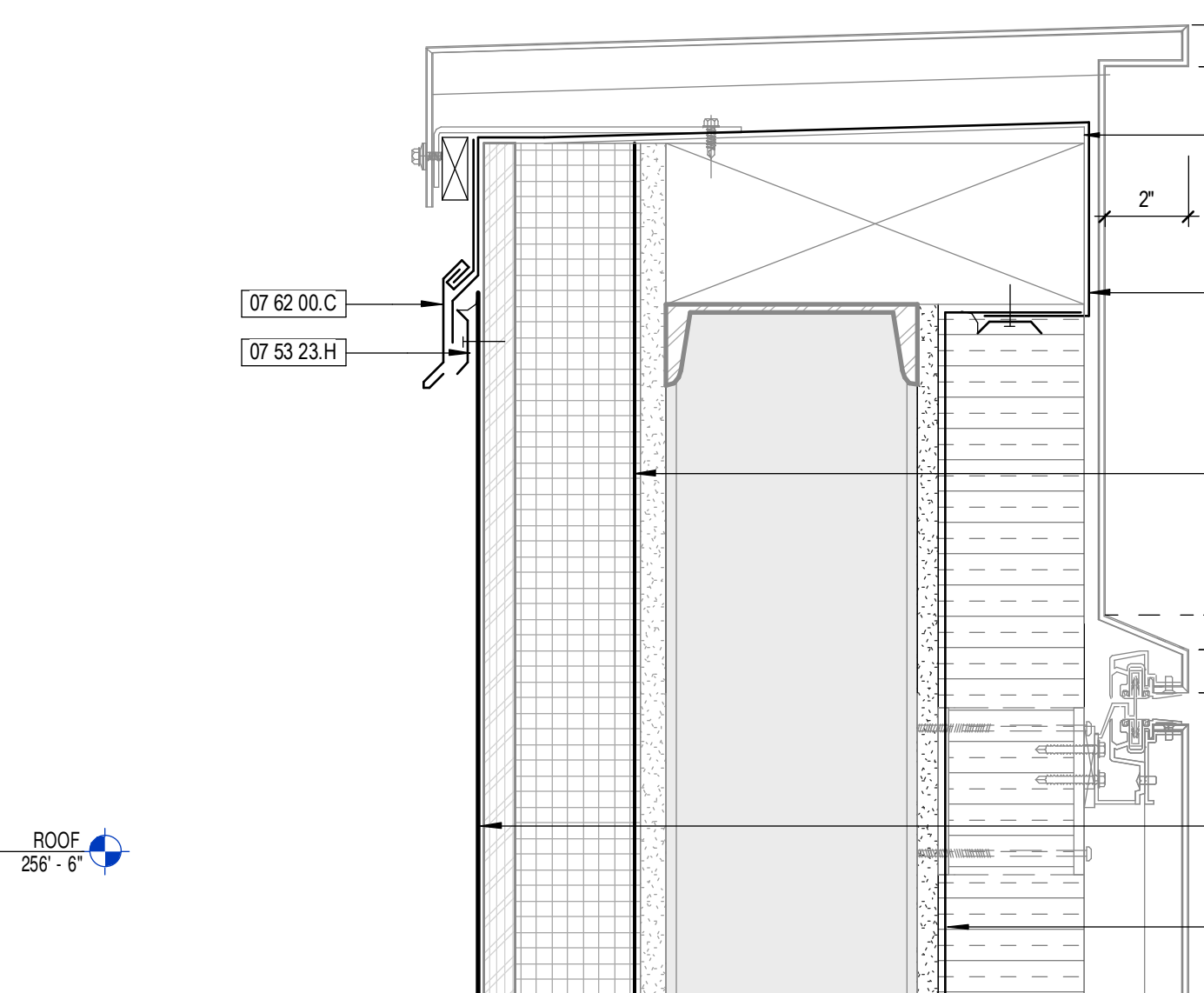
11 STAIRTOWER COPING
3" = 1'-0"



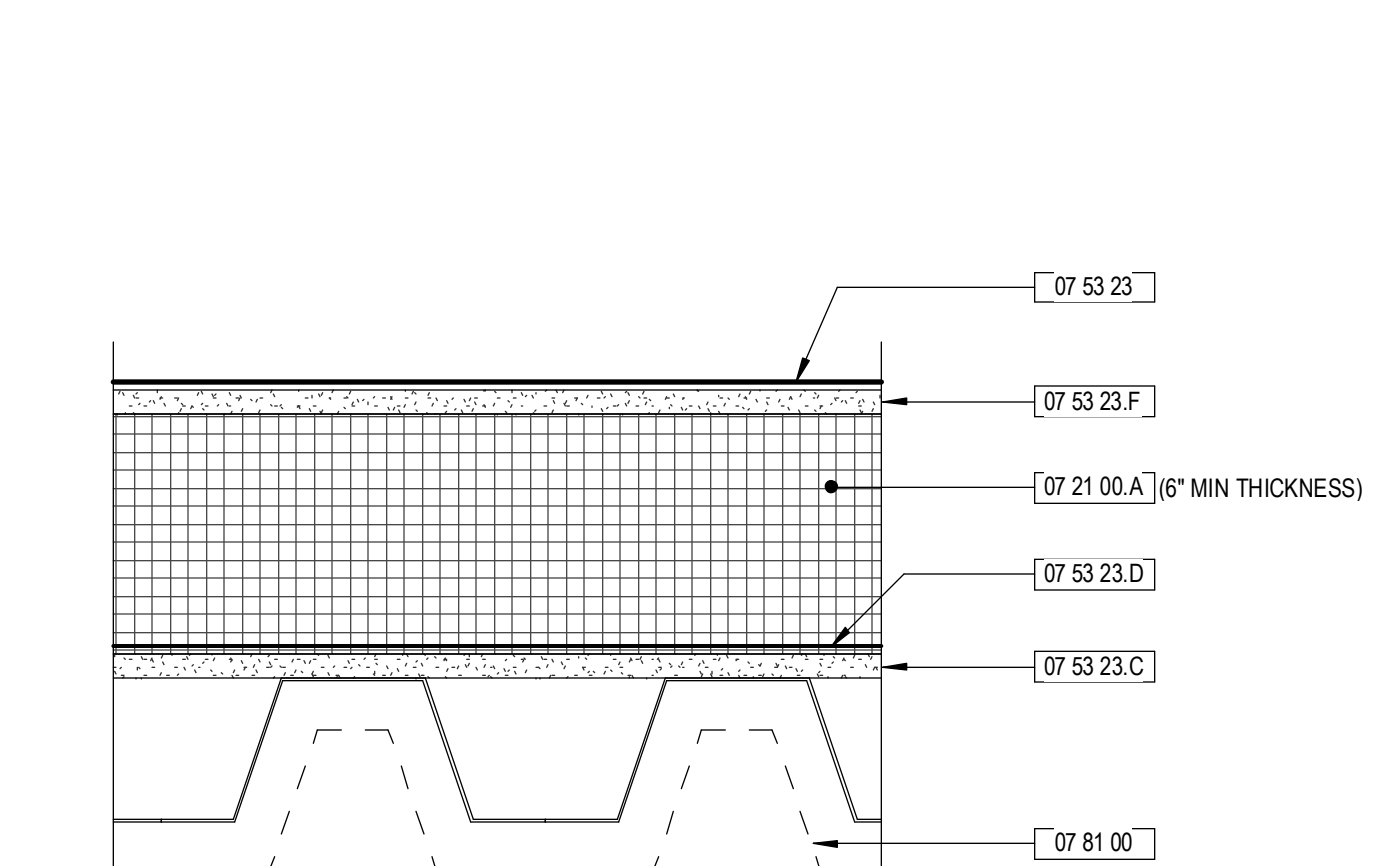
10 CURTAINWALL SCUPPER
3" = 1'-0"



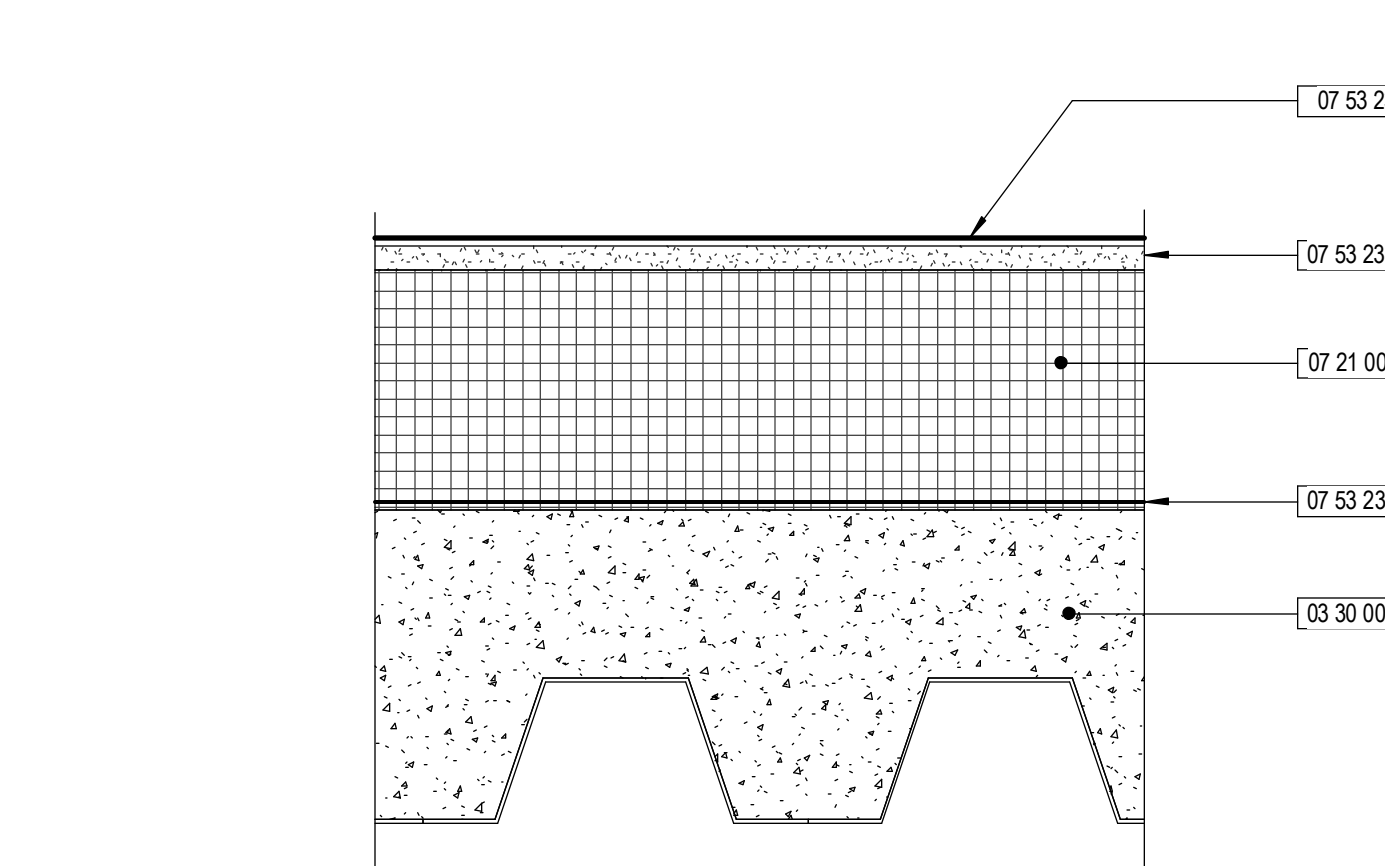
9 CURTAINWALL COPING
3" = 1'-0"



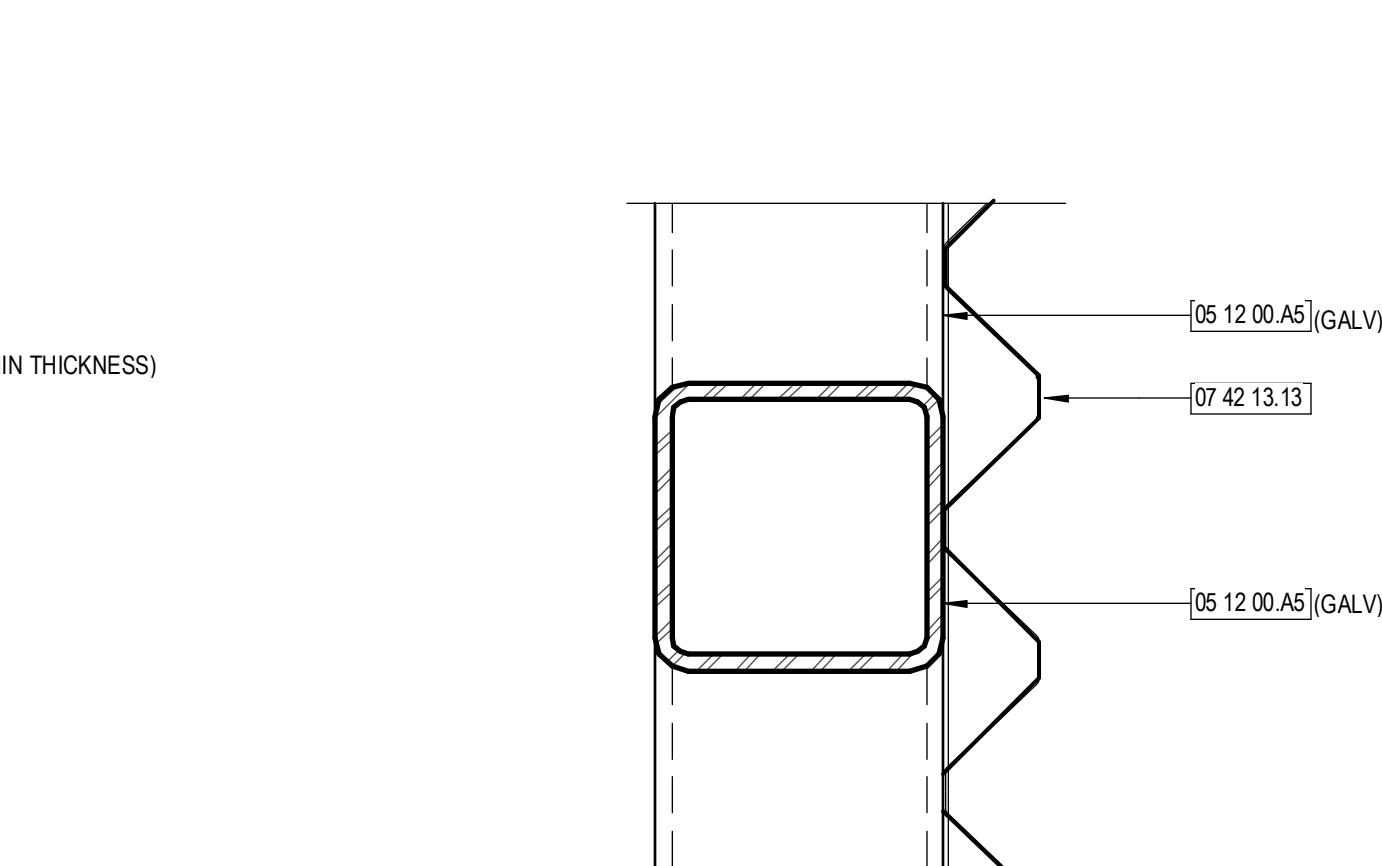
8 MCM COPING
3" = 1'-0"



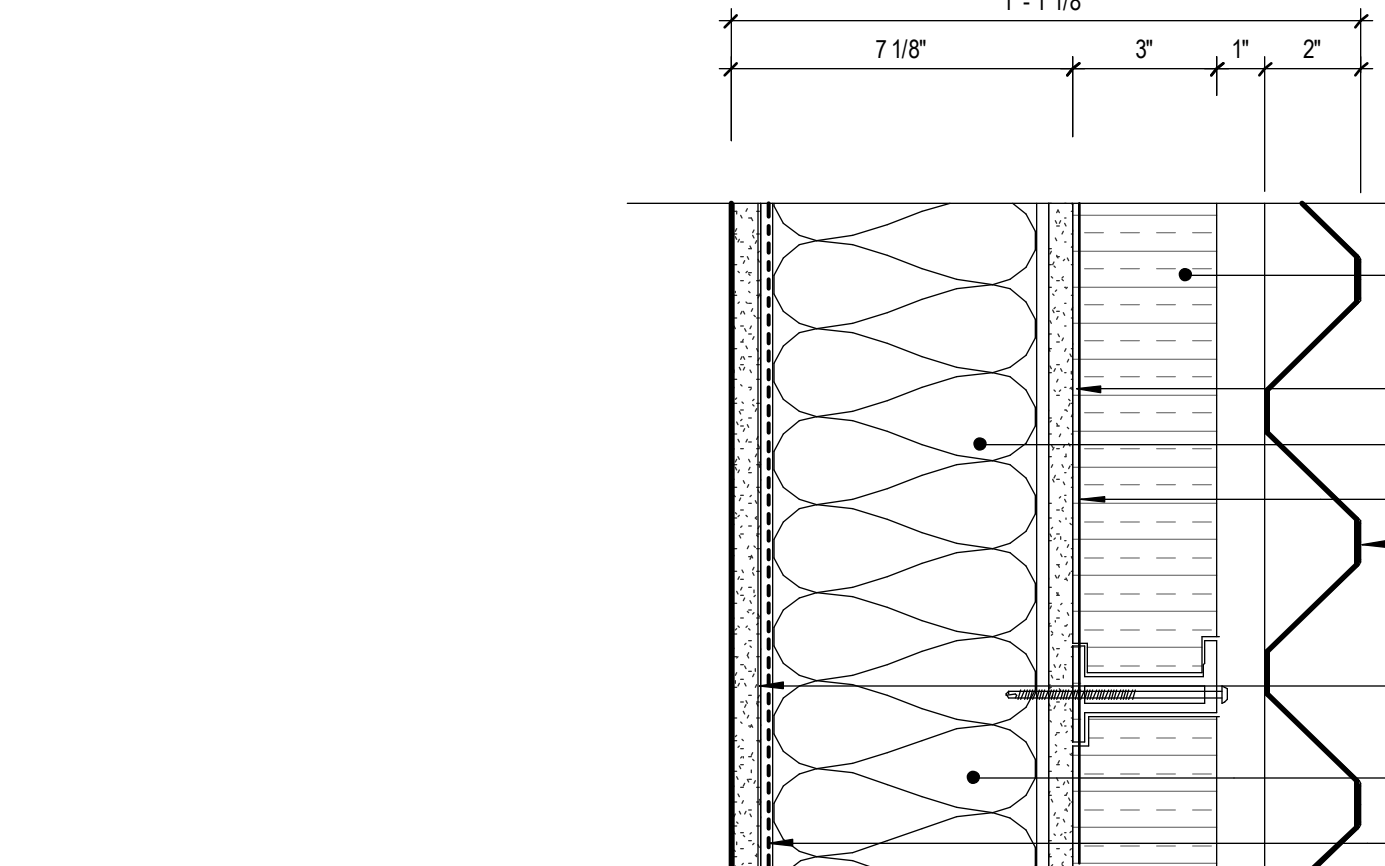
7 RF-2 METAL DECK WITH INSUL.
3" = 1'-0"



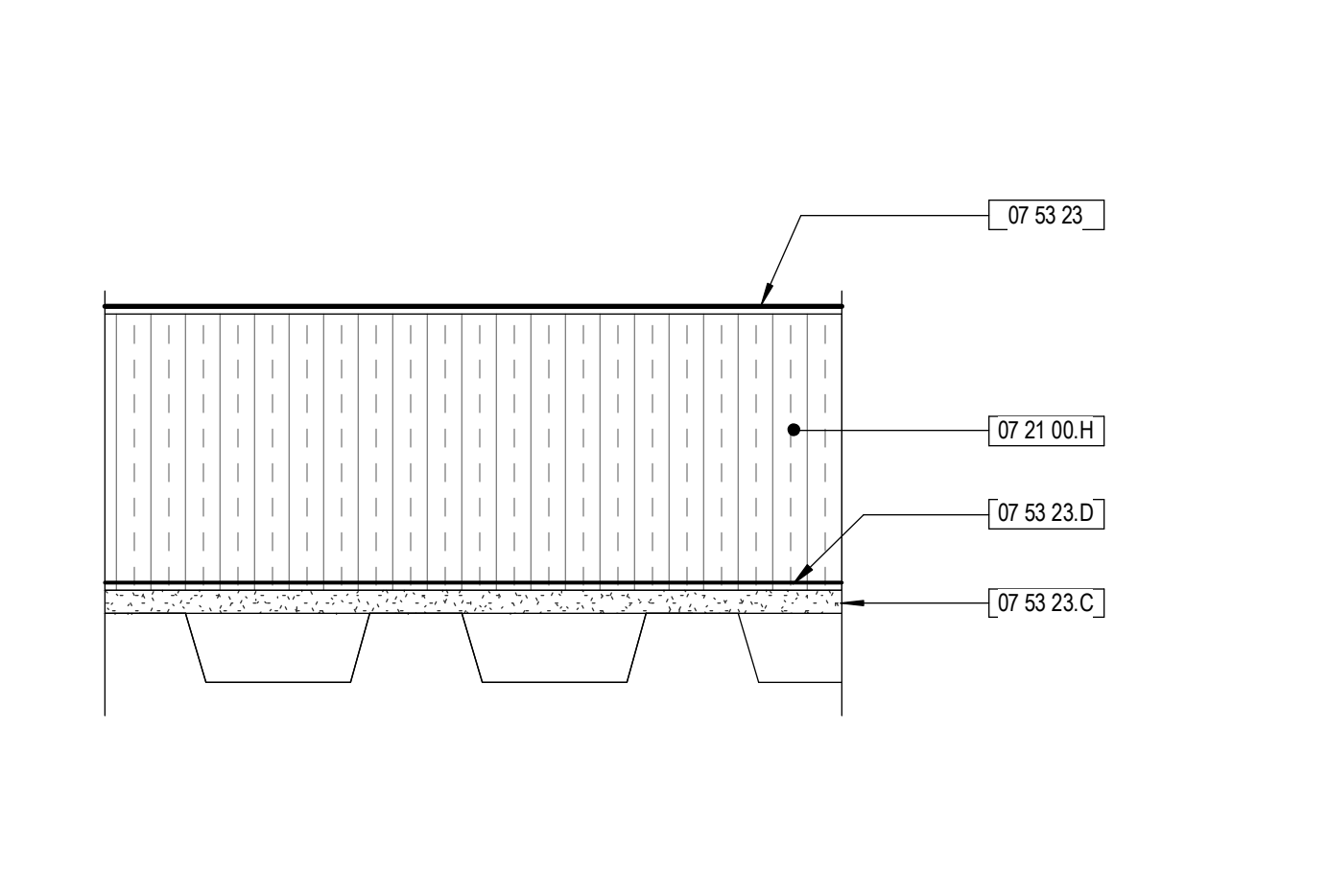
6 RF-1 METAL DECK / CONC. WITH INSUL.
3" = 1'-0"



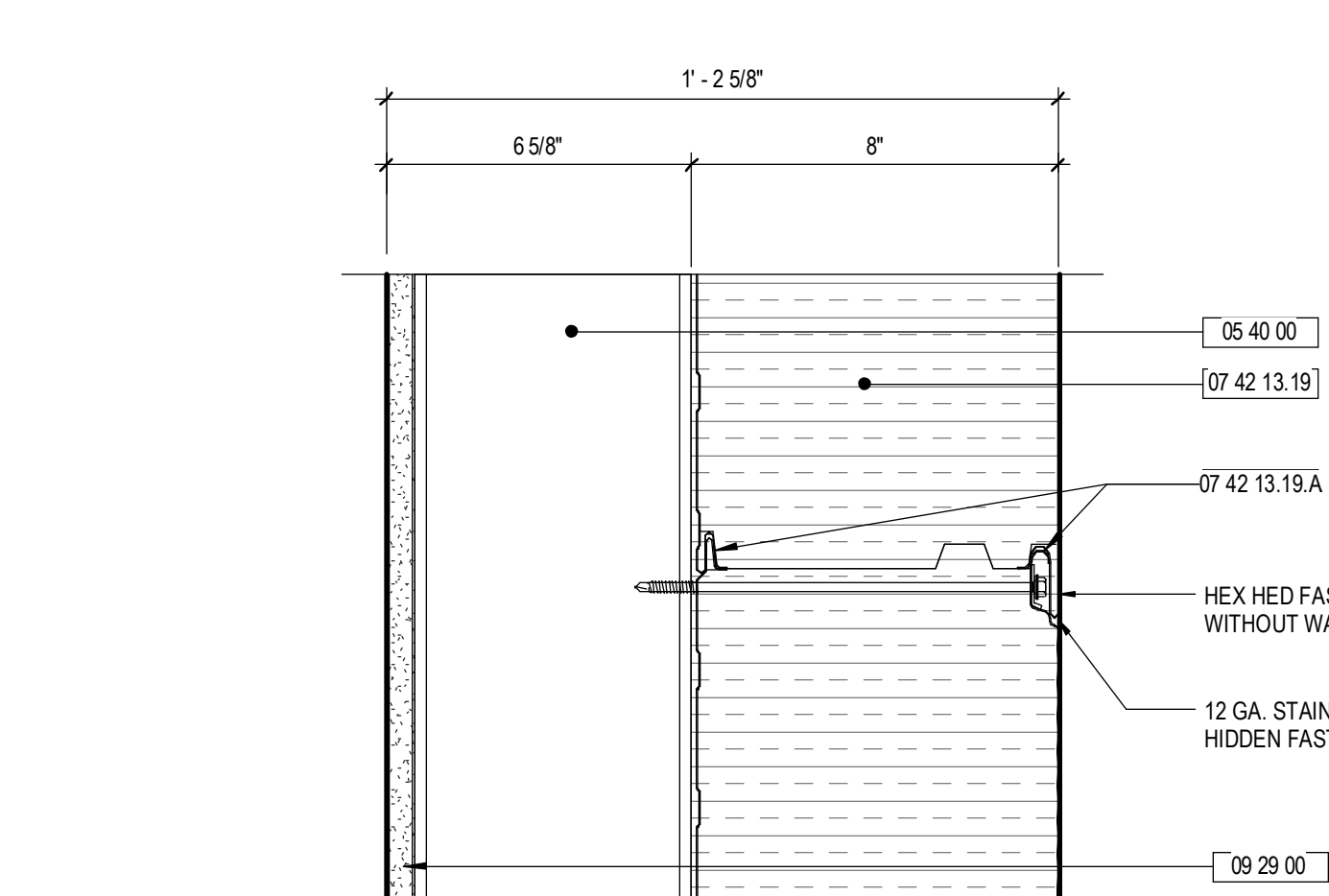
5 MTL-5 ALUM. PNL MECH. SCREEN (PLAN)
3" = 1'-0"



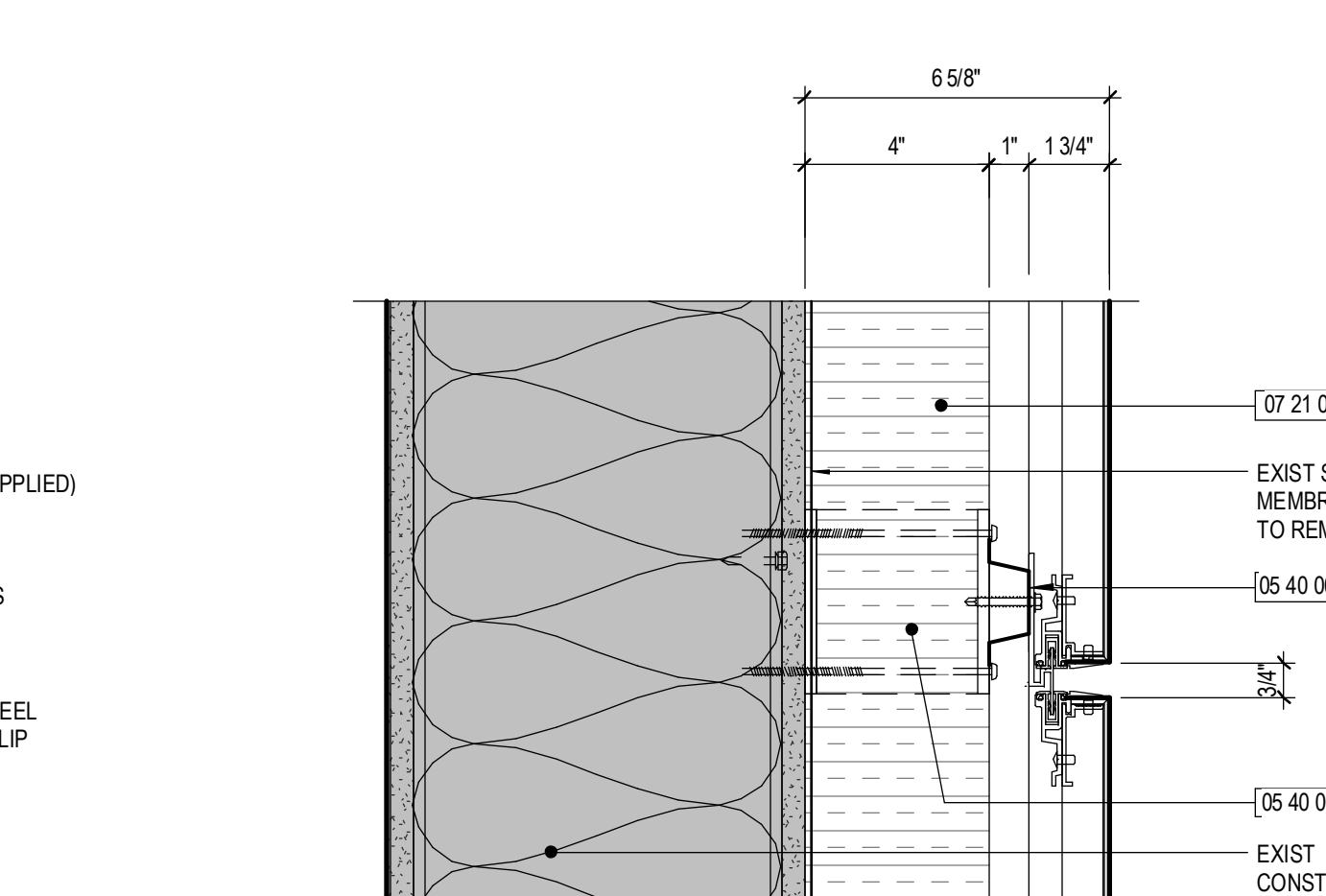
4 MTL-4 CORRUGATED ALUM WALL (PLAN)
3" = 1'-0"



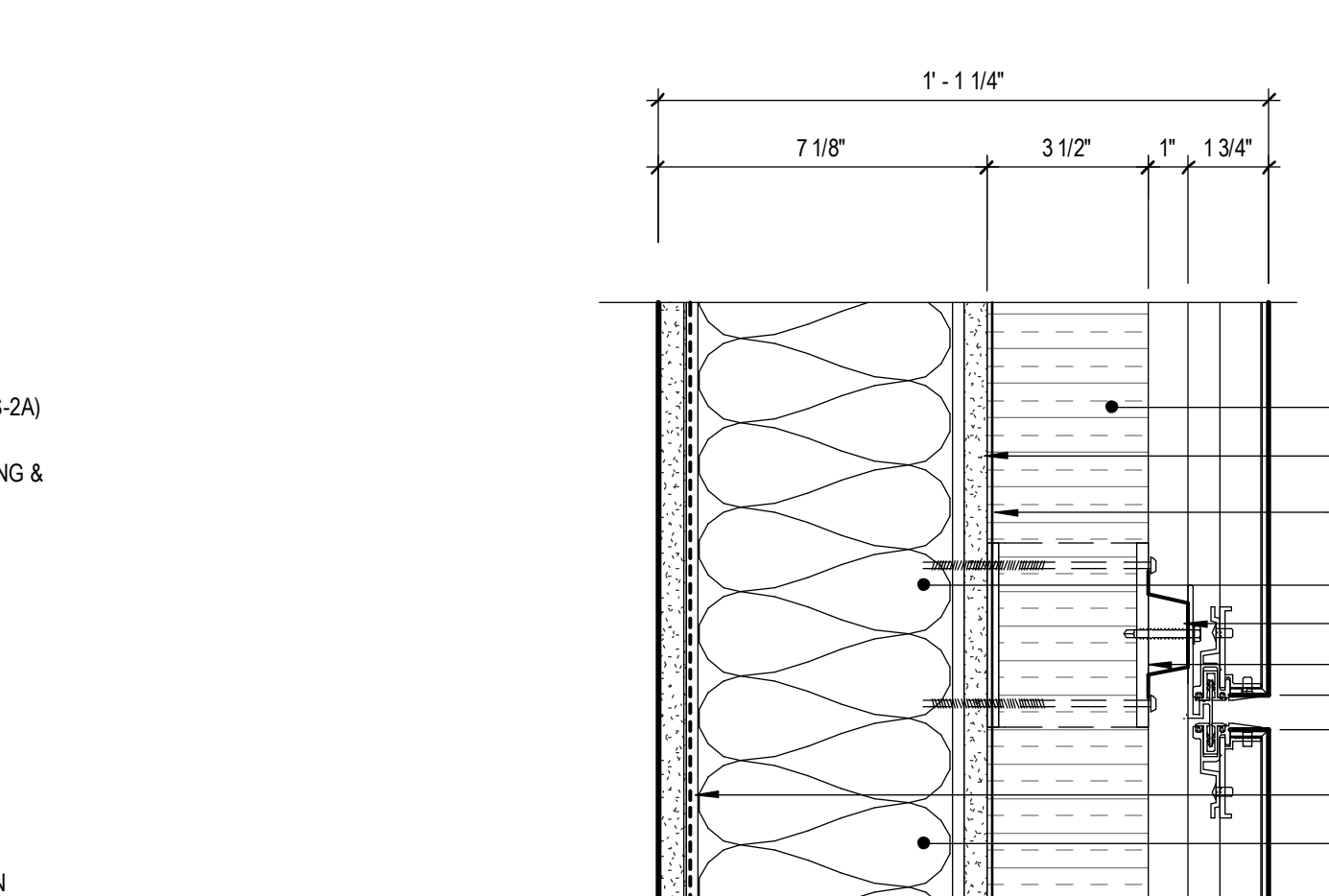
15 RF-3 ROOF AT CONNECTOR
3" = 1'-0"



3 MTL-3 METAL WALL AT RICHARDS
3" = 1'-0"



2 MTL-1A ACM PANEL WALL AT EXISTING
3" = 1'-0"



1 MTL-1 ACM PANEL WALL
3" = 1'-0"

3/29/2018 1:02:53 PM 152181.MXD East Tower 6 & 7 (CONT)_dmlm.dwg