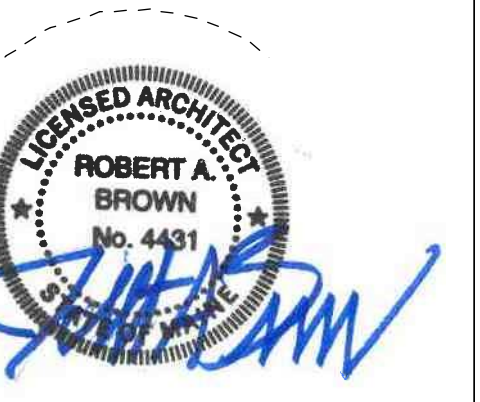


CONSULTANTS

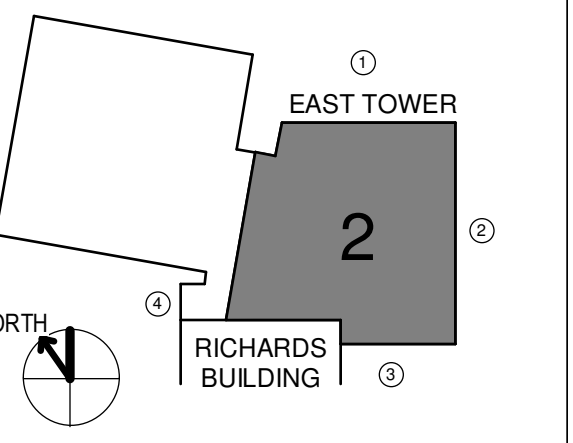
- CIVIL/LANDSCAPE ARCHITECT  
**Sebago Technics**  
 75 John Roberts Road, Suite 1A, South Portland ME 04106
- STRUCTURAL/ENR/BUILDING ENVELOPE CONSULTANT  
**Simpson Gumpertz & Heger Inc.**  
 41 Sevon Street, Building 1, Suite 500, Waltham MA 02453
- MEPP ENGINEER/ CODE  
**AKF Group LLC**  
 99 Bedford Street, 2nd Floor, Boston MA 02111
- CONSTRUCTION MANAGER  
**Turner Construction**  
 2 Seaport Lane, Suite 200, Boston MA 02210
- ELEVATOR CONSULTANT  
**VDA (Van Dusen & Associate)**  
 101 Summer Street, 4th Floor, Boston MA 02110
- COST ESTIMATOR  
**D. G. Jones International**  
 3 Baldwin Green Common, Suite 202, Woburn MA 01801

PROJECT TITLE

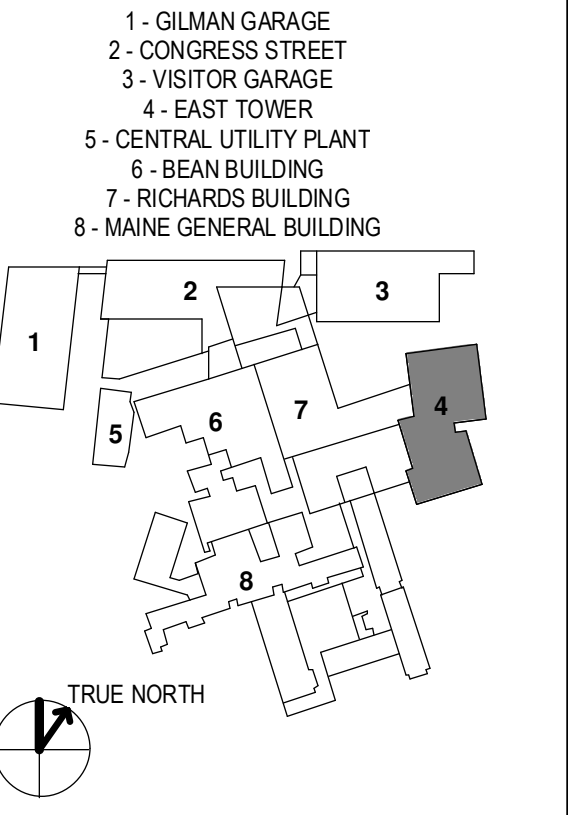
**East Tower 6 & 7 Addition**  
 22 Bramhall Street  
 Portland ME 04102



KEY PLANS



OVERALL KEY PLAN



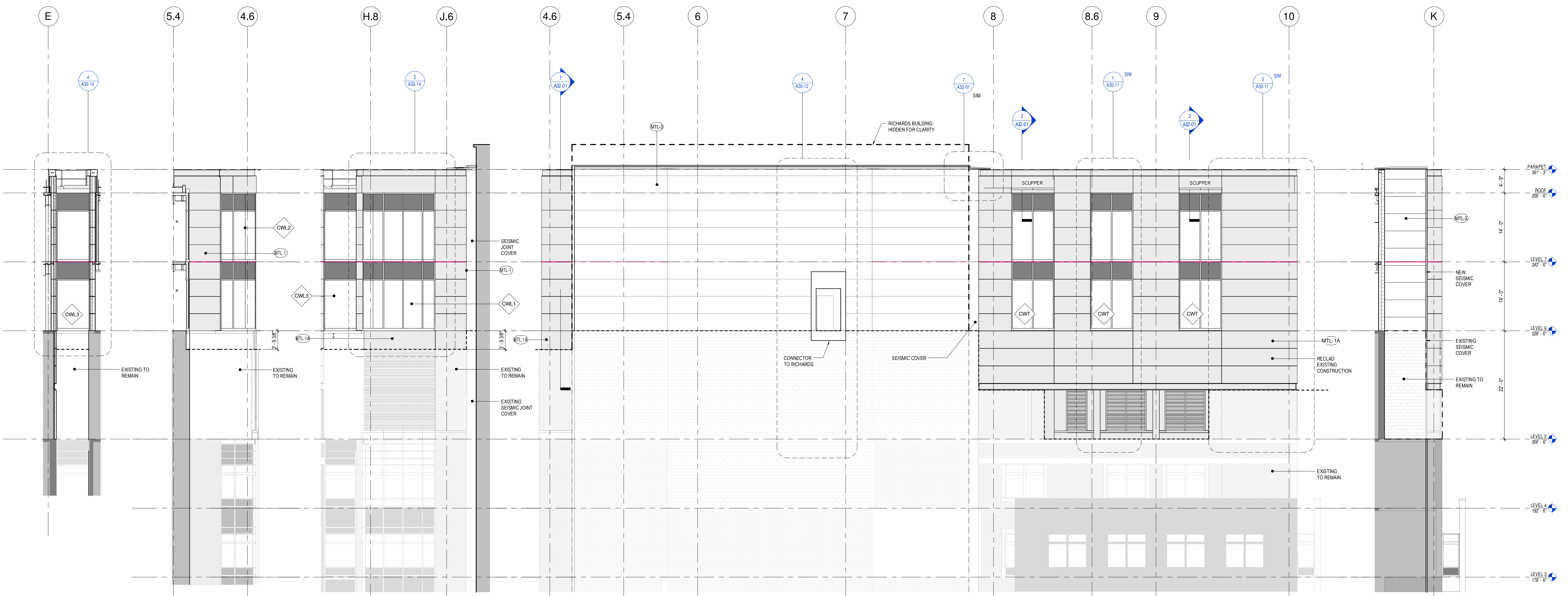
CONSTRUCTION DOCUMENTS  
 JANUARY 26, 2018

NO	ISSUE	DATE
Job Number	152181.000	
Drawn	TEAM	
Checked		
Approved	JK	

TITLE  
**BUILDING ELEVATIONS**

SHEET NUMBER

**A20-02**



6 LOUNGE - BEYOND  
 1/8" = 1'-0"

5 LOUNGE - NORTH  
 1/8" = 1'-0"

4 LOUNGE - WEST  
 1/8" = 1'-0"

3 SOUTH ELEVATION - SECTOR 2  
 1/8" = 1'-0"

3A WEST ELEVATION - SECTOR 2  
 1/8" = 1'-0"



2 EAST ELEVATION - SECTOR 2  
 1/8" = 1'-0"

1 NORTH ELEVATION - SECTOR 2  
 1/8" = 1'-0"

LEGEND

- CWT CURTAINWALL TYPE; SEE A30 SERIES FOR LAYOUT
- MTL-3 WALL ASSEMBLY; SEE A30-01