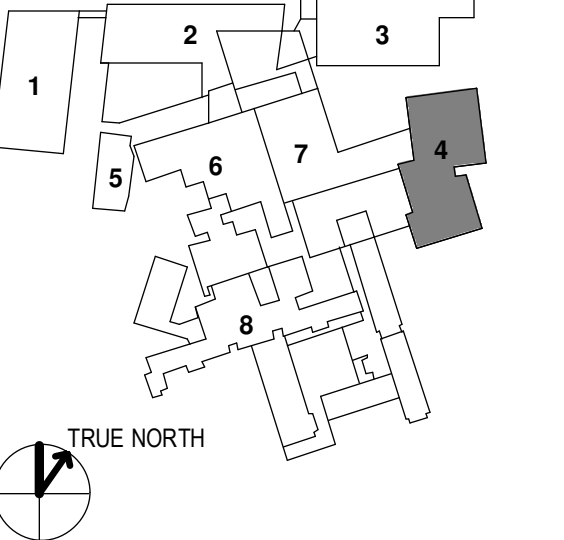
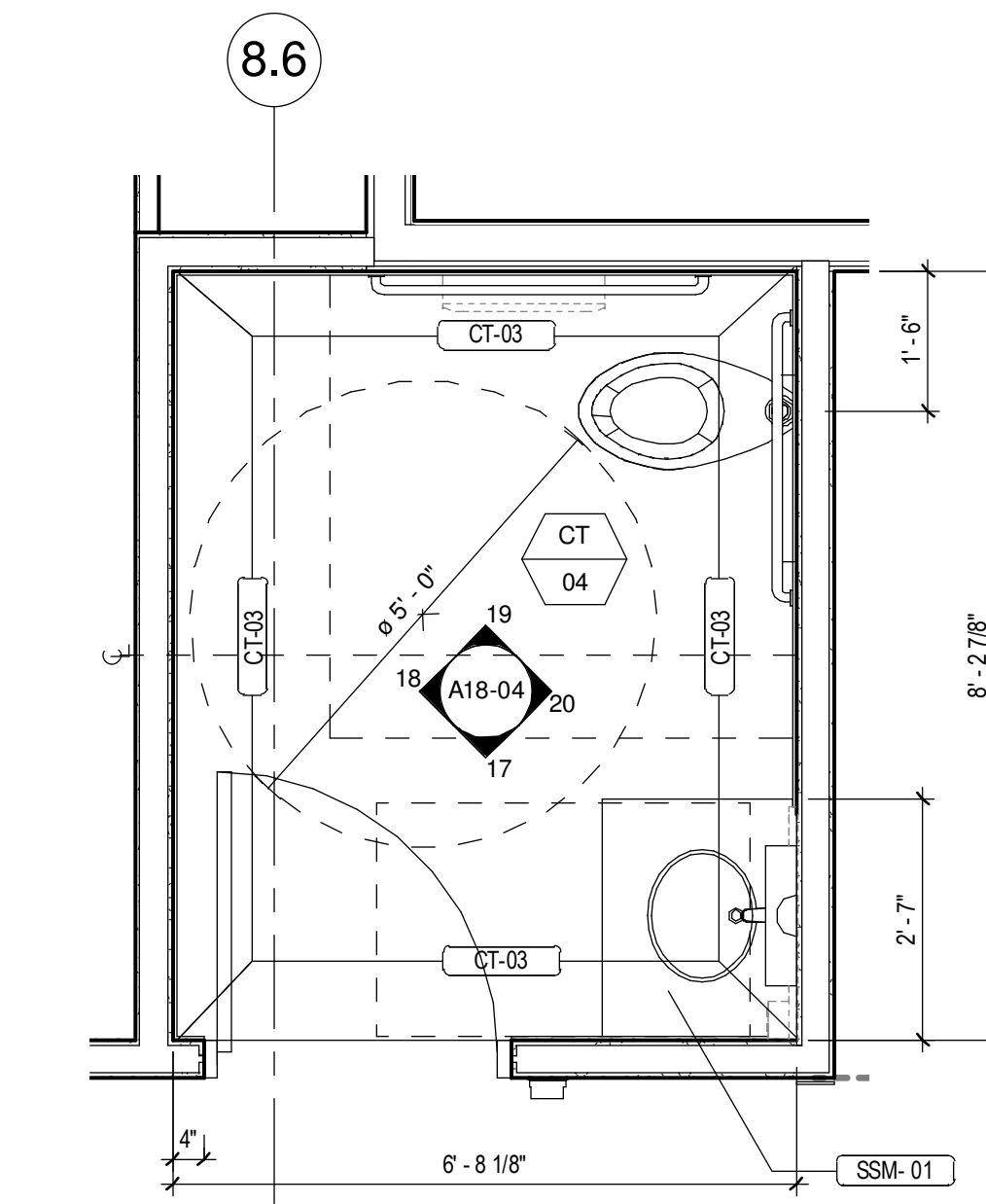


- 1 - GILMAN GARAGE
- 2 - CONGRESS STREET
- 3 - VISITOR GARAGE
- 4 - EAST TOWER
- 5 - CENTRAL UTILITY PLANT
- 6 - BEAN BUILDING
- 7 - RICHARDS BUILDING
- 8 - MAINE GENERAL BUILDING

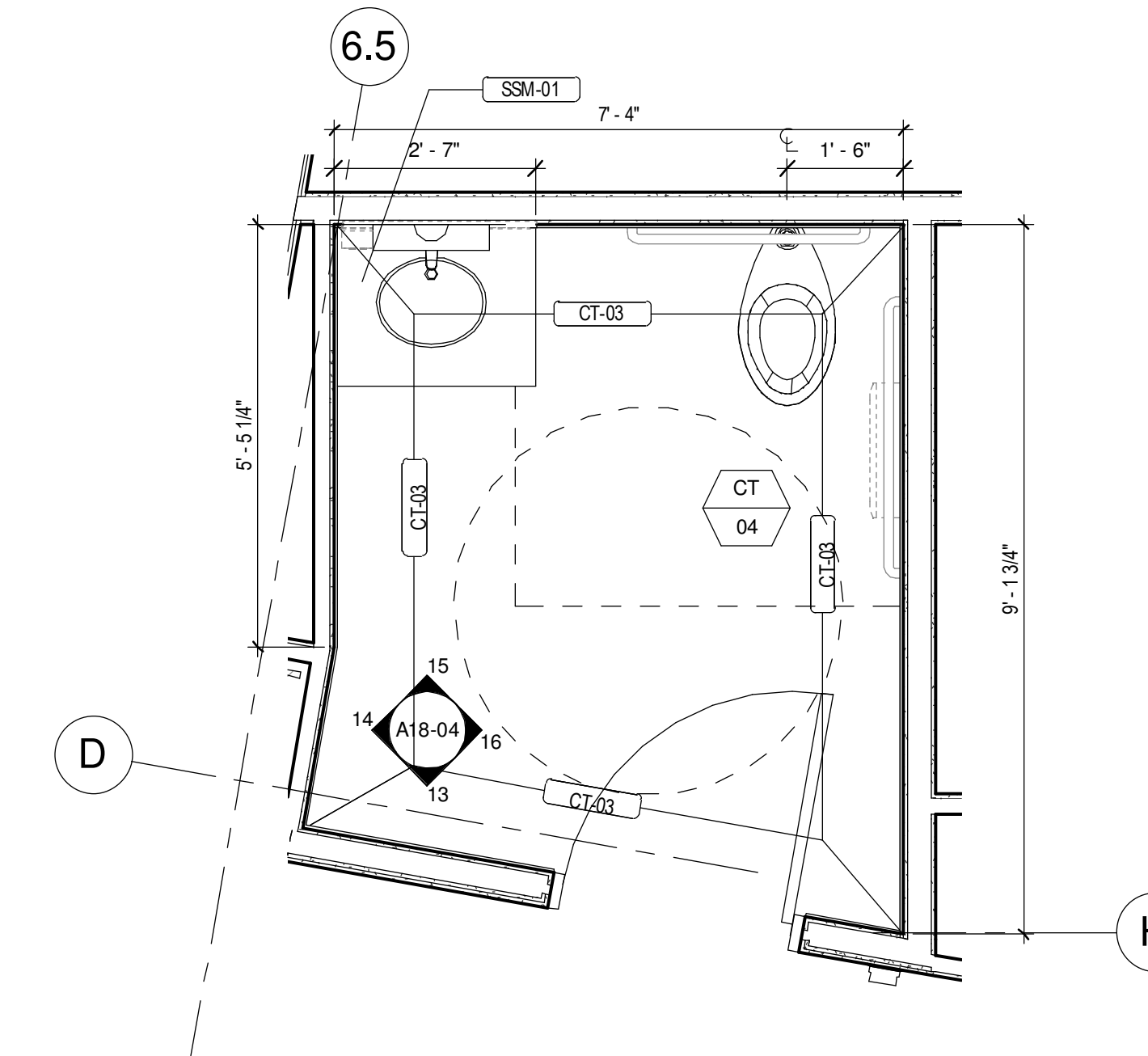


NO	ISSUE	DATE
1	ADDENDUM NO. 2	3/28/18

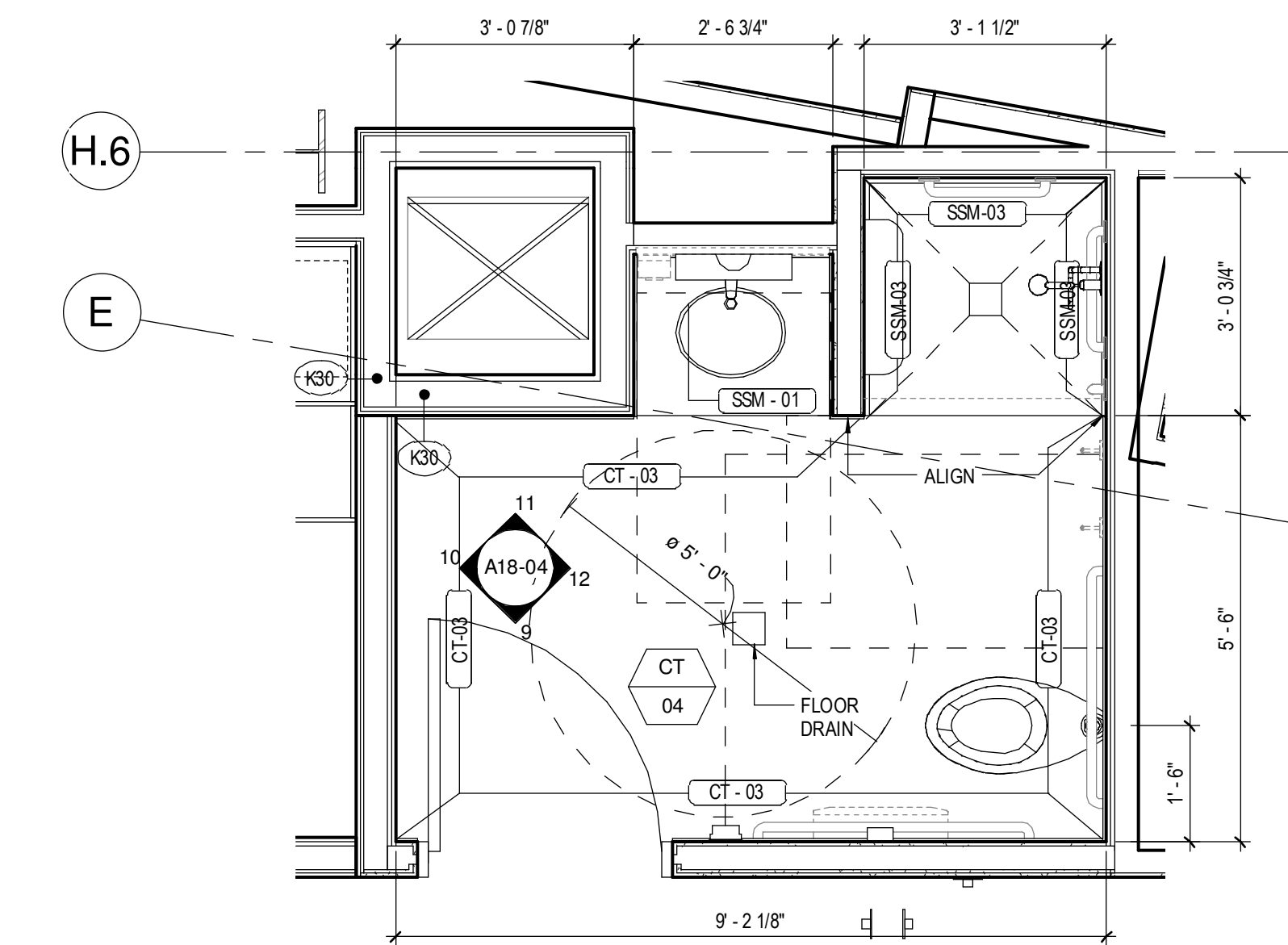
Job Number: 152181.000  
 Drawn: TEAM  
 Checked: JK  
 Approved: JK



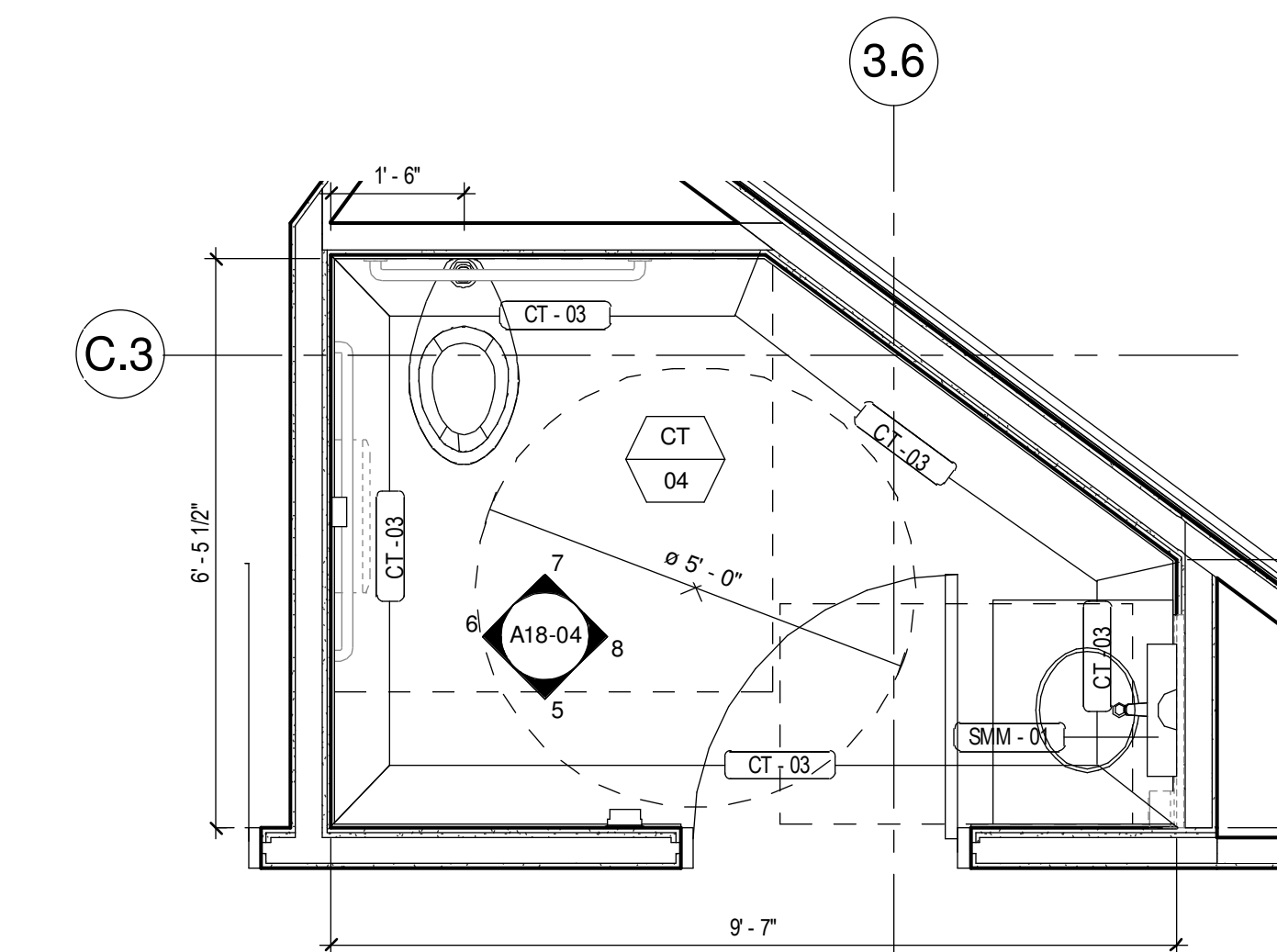
**4 TOILET (STAFF) - 6062/7062**  
 1/2" = 1'-0"



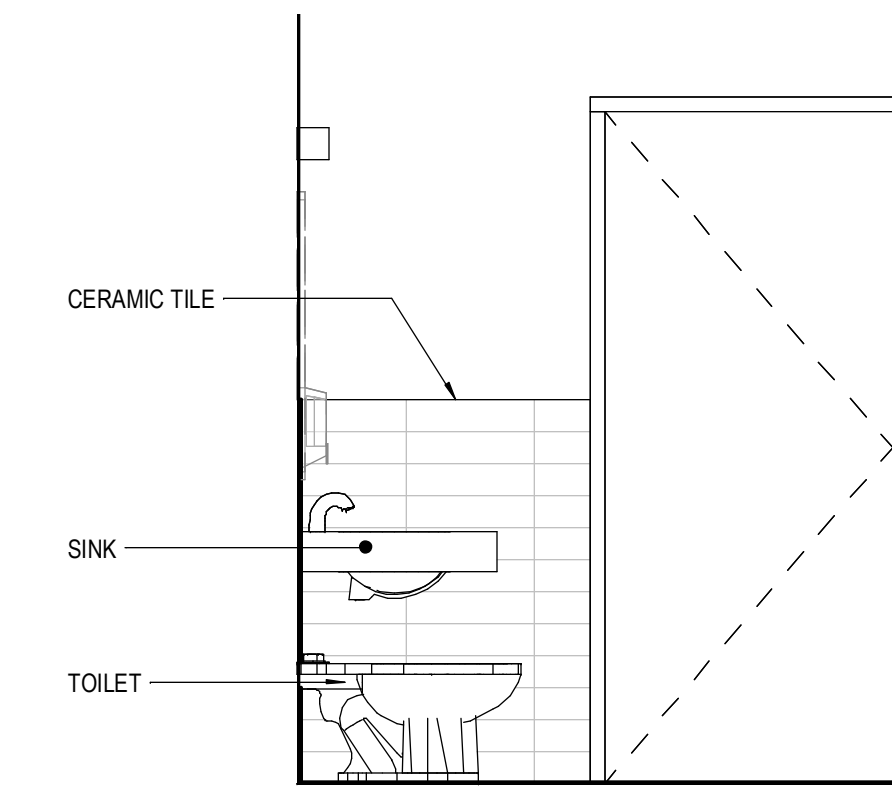
**3 TOILET (VISITOR) - 6003/7003**  
 1/2" = 1'-0"



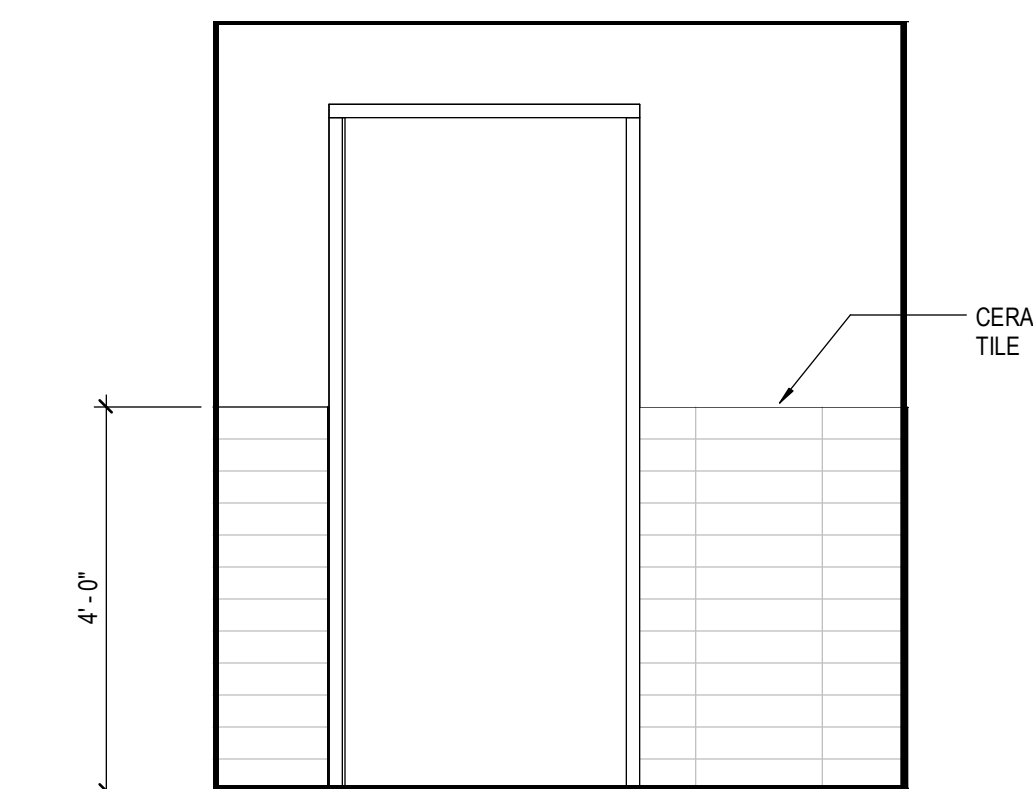
**2 TOILET (STAFF) - 6057/7057**  
 1/2" = 1'-0"



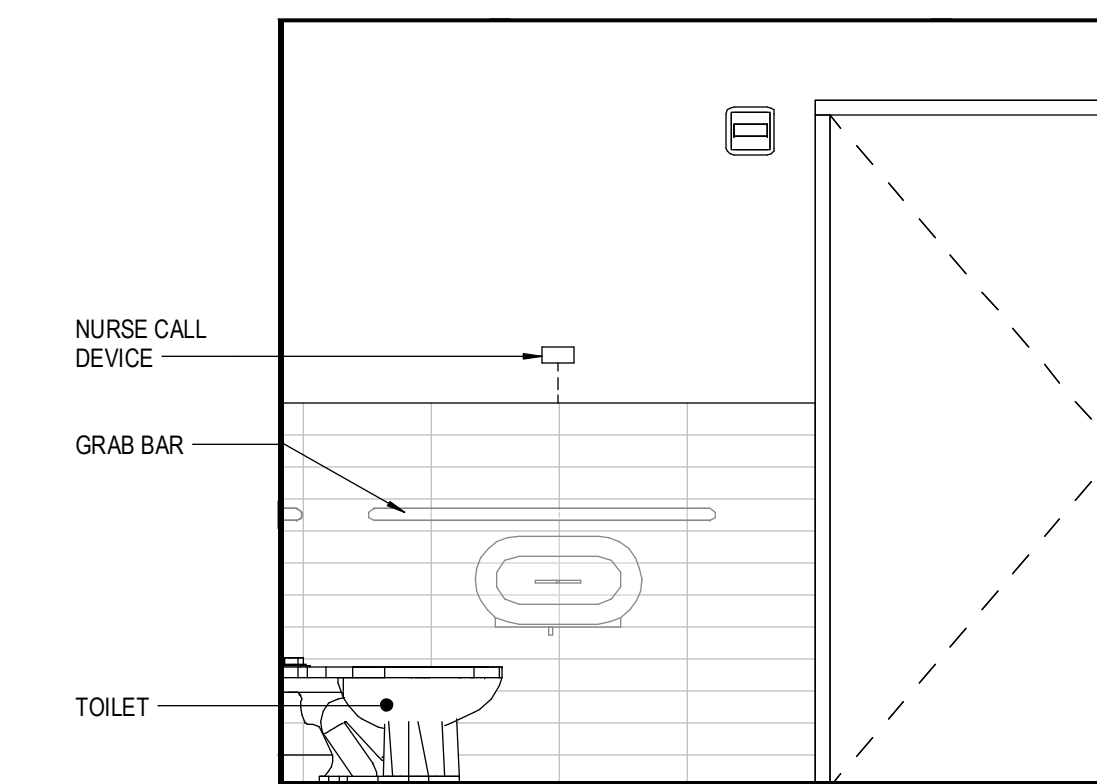
**1 TOILET (STAFF) - 6017/7017**  
 1/2" = 1'-0"



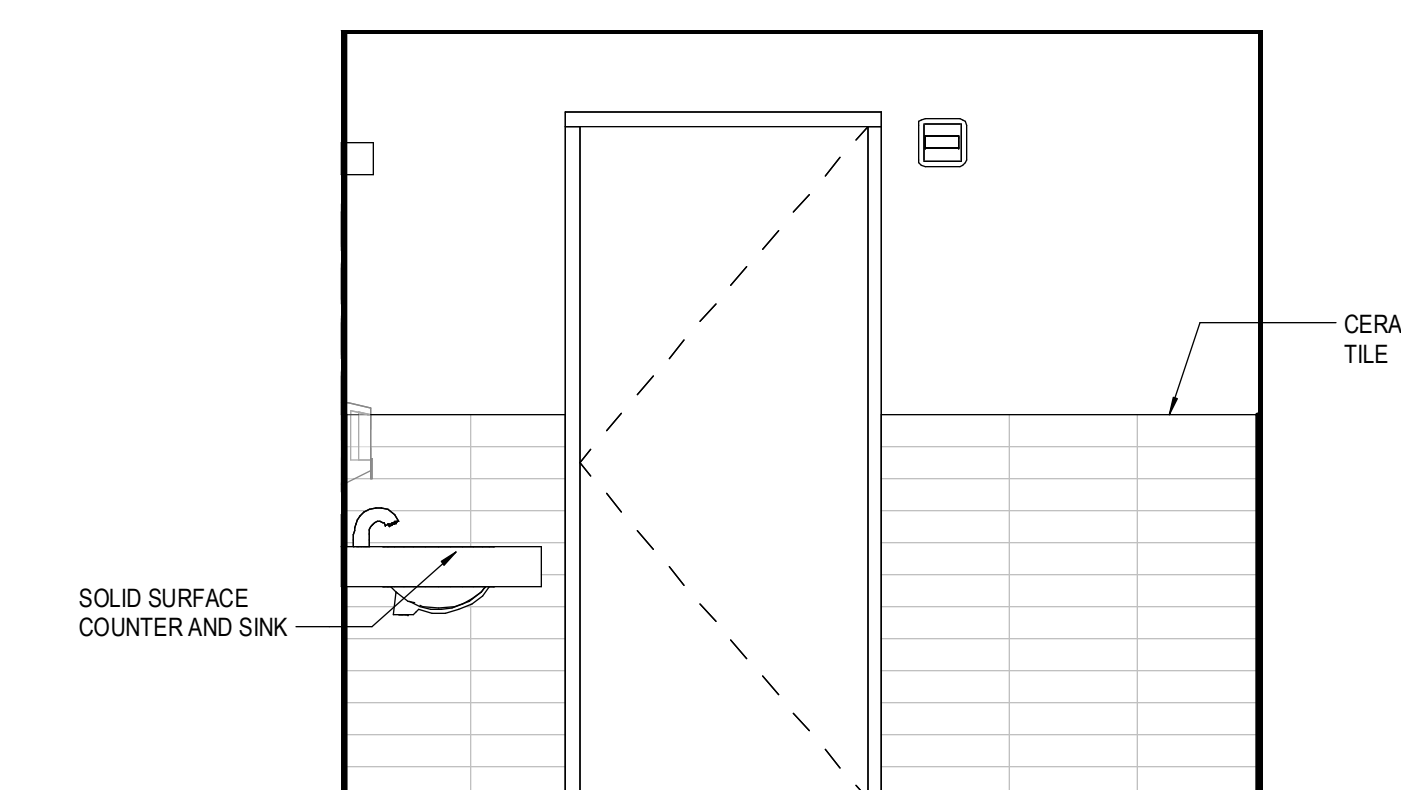
**17 TOILET (STAFF) 6062/7072 - SOUTH**  
 1/2" = 1'-0"



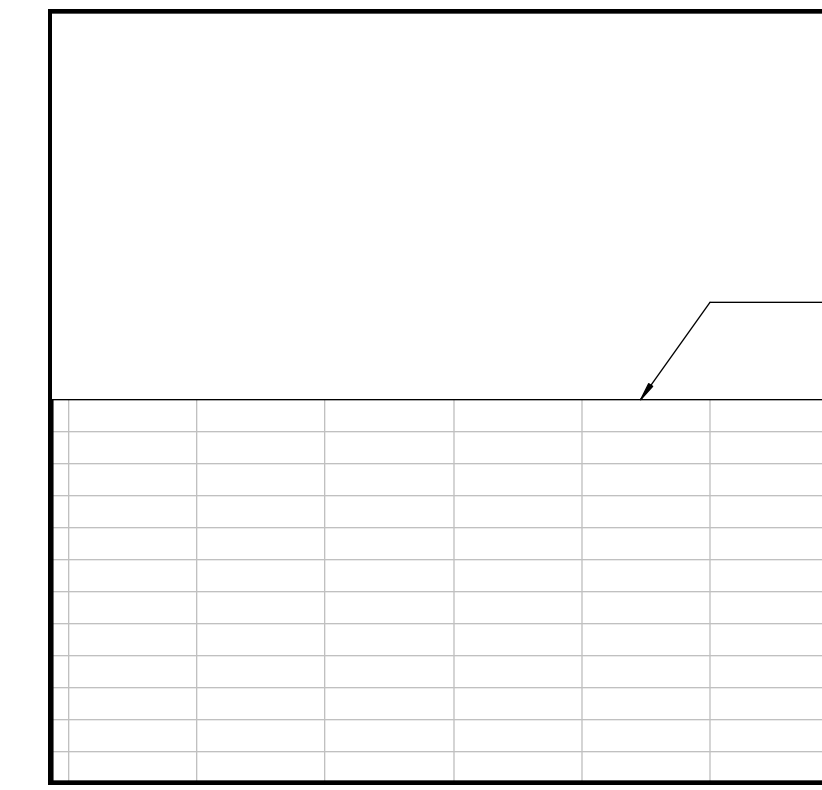
**13 TOILET (VISITOR) 6003/7003 - SOUTH**  
 1/2" = 1'-0"



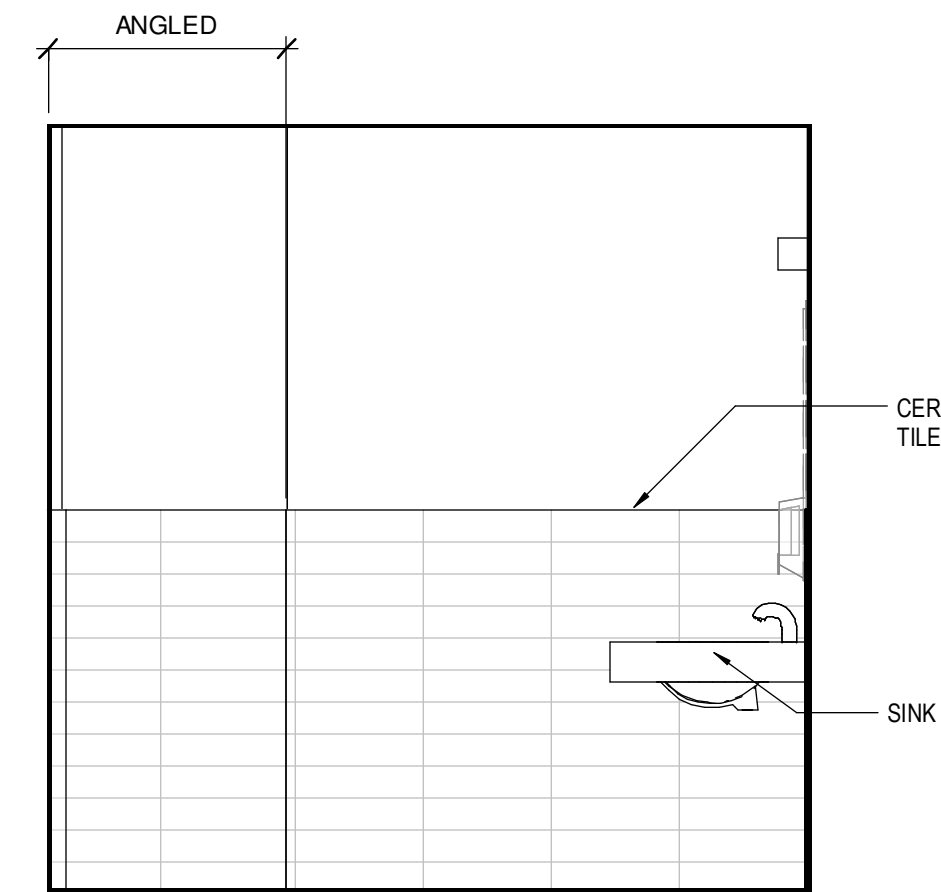
**9 TOILET (STAFF) 6057/7057 - SOUTH**  
 1/2" = 1'-0"



**5 TOILET (STAFF) 6017/7017 - SOUTH**  
 1/2" = 1'-0"



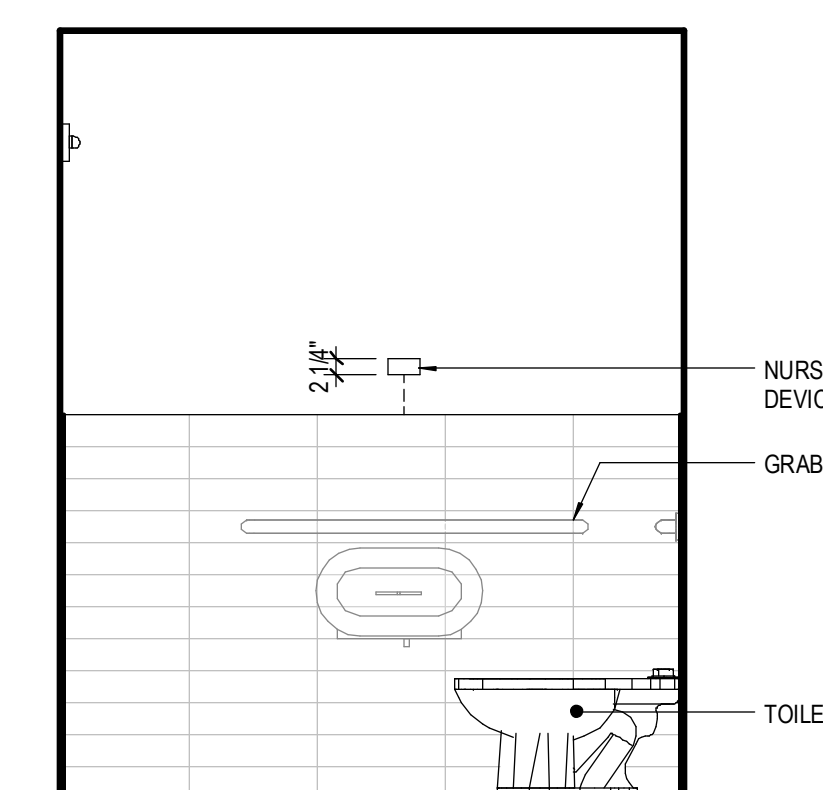
**18 TOILET (STAFF) 6062/7062 - WEST**  
 1/2" = 1'-0"



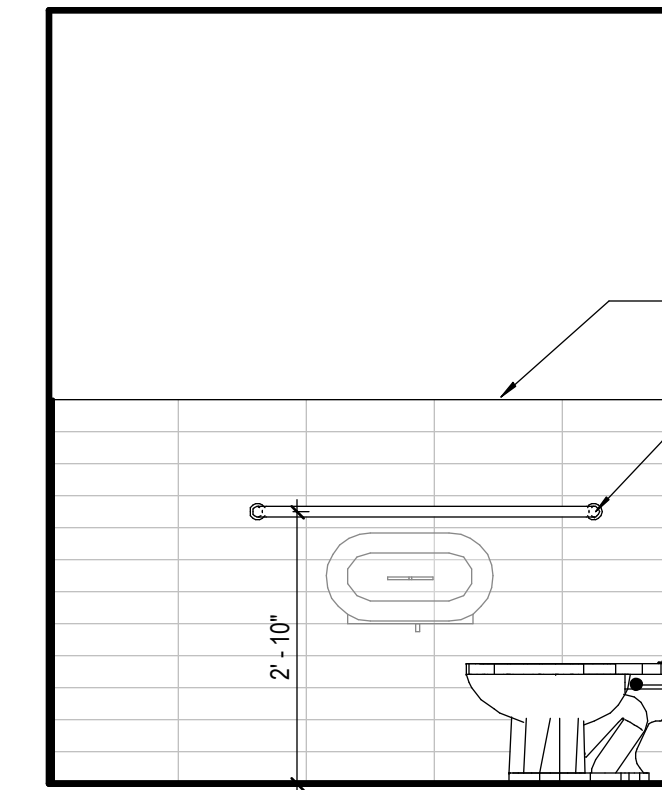
**14 TOILET (VISITOR) 6003/7003 - WEST**  
 1/2" = 1'-0"



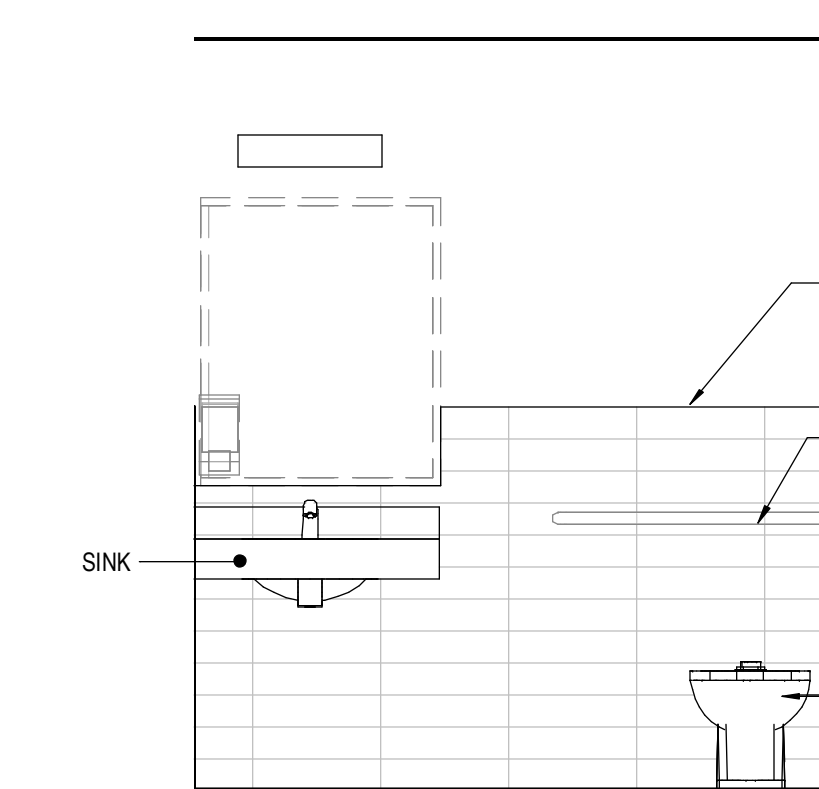
**10 TOILET STAFF 6057/7057 - WEST**  
 1/2" = 1'-0"



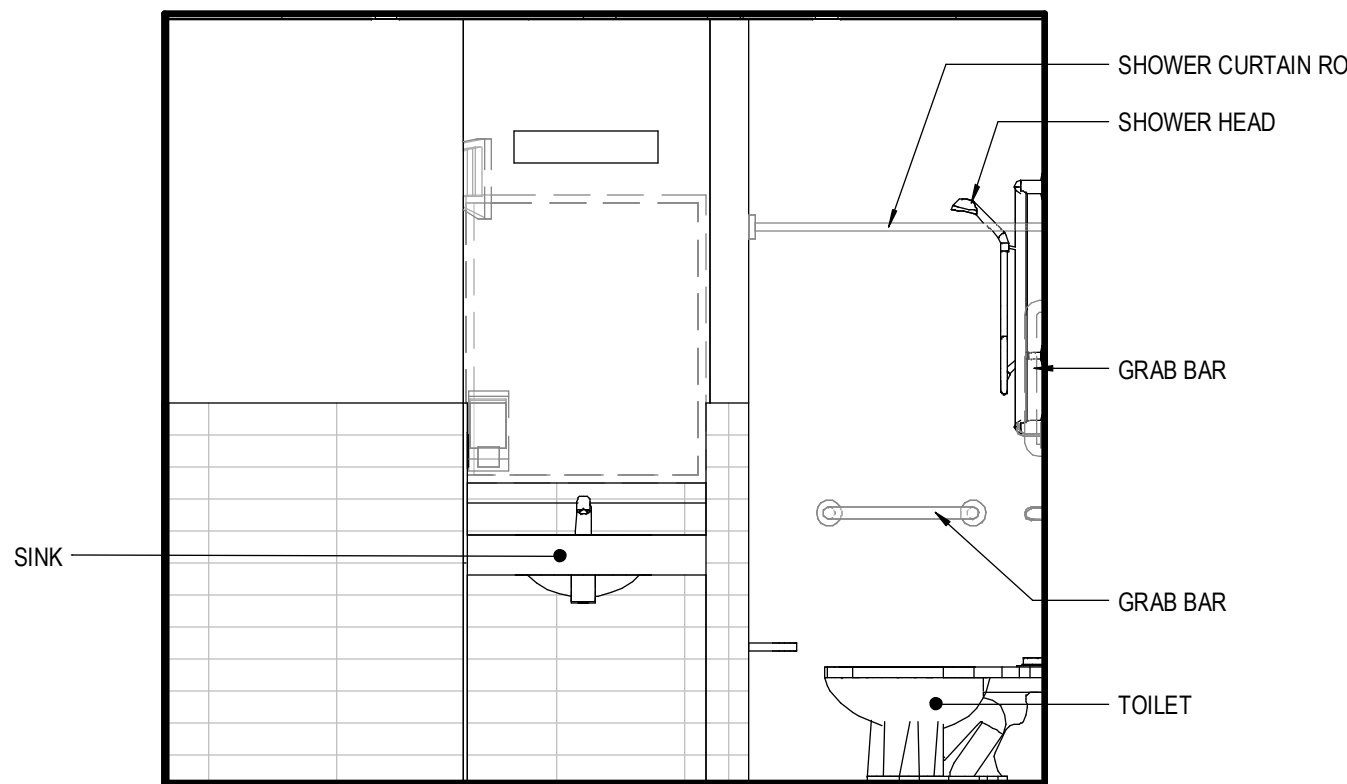
**6 TOILET STAFF 6017/7017 - WEST**  
 1/2" = 1'-0"



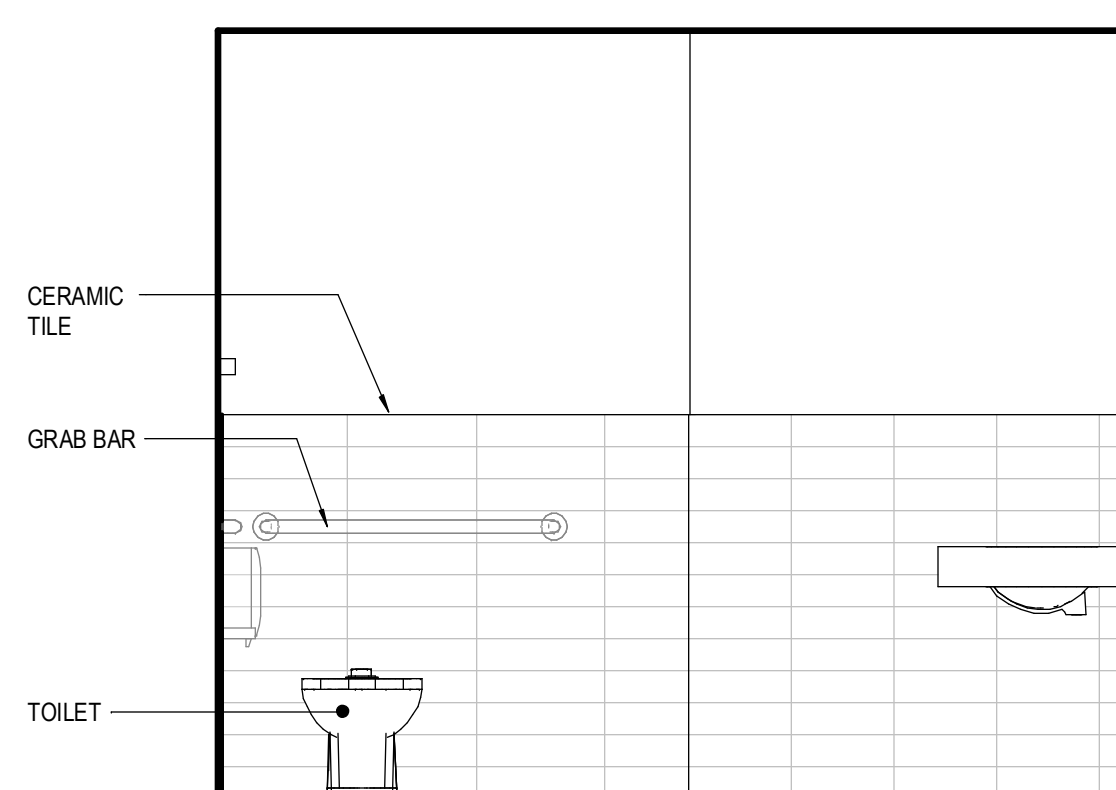
**19 TOILET (STAFF) 6062/7062 - NORTH**  
 1/2" = 1'-0"



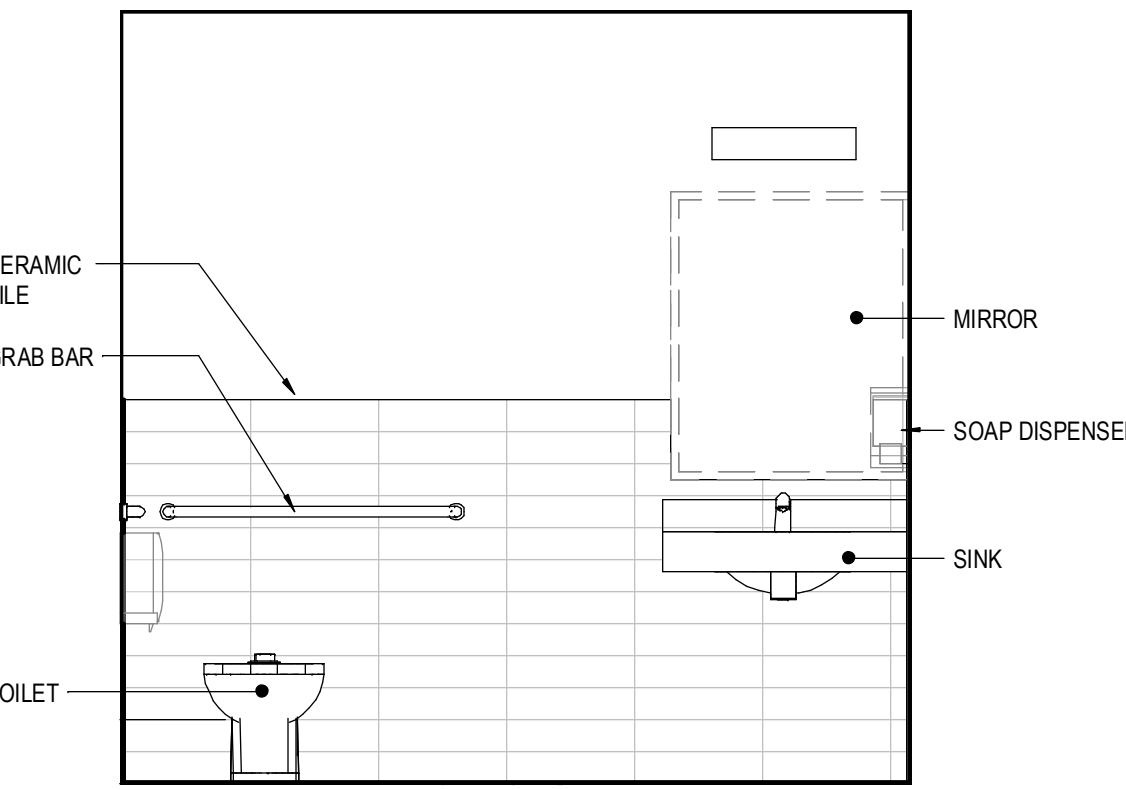
**15 TOILET (VISITOR) 6003/7003 - NORTH**  
 1/2" = 1'-0"



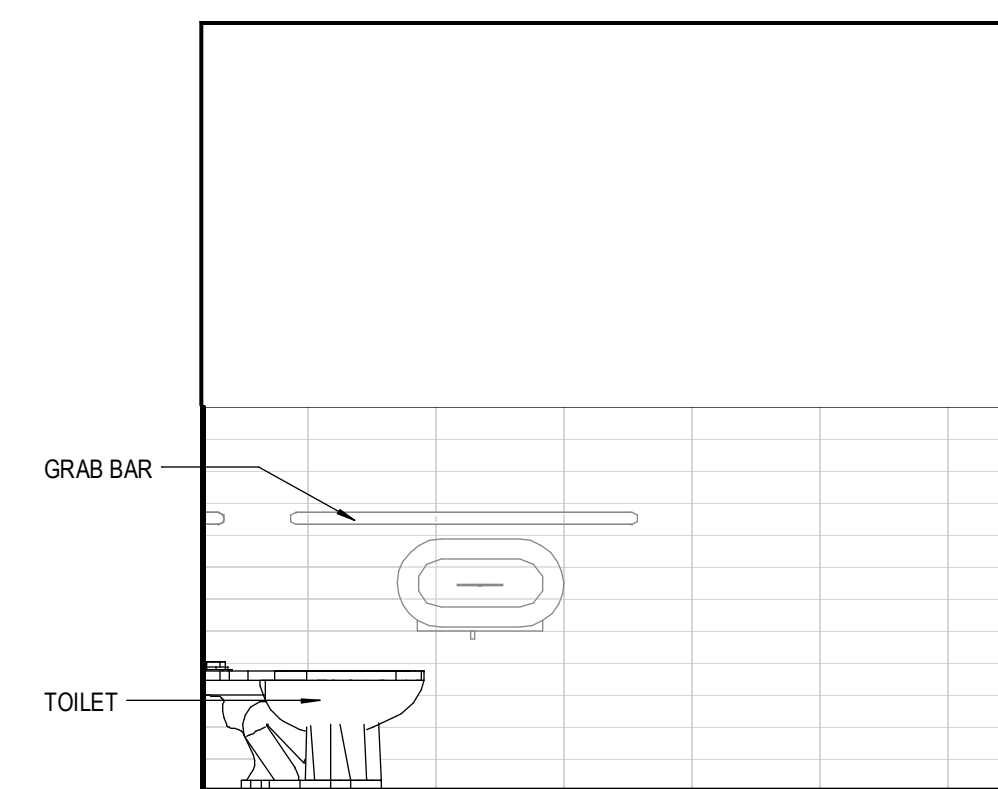
**11 TOILET (STAFF) 6057/7057 - NORTH**  
 1/2" = 1'-0"



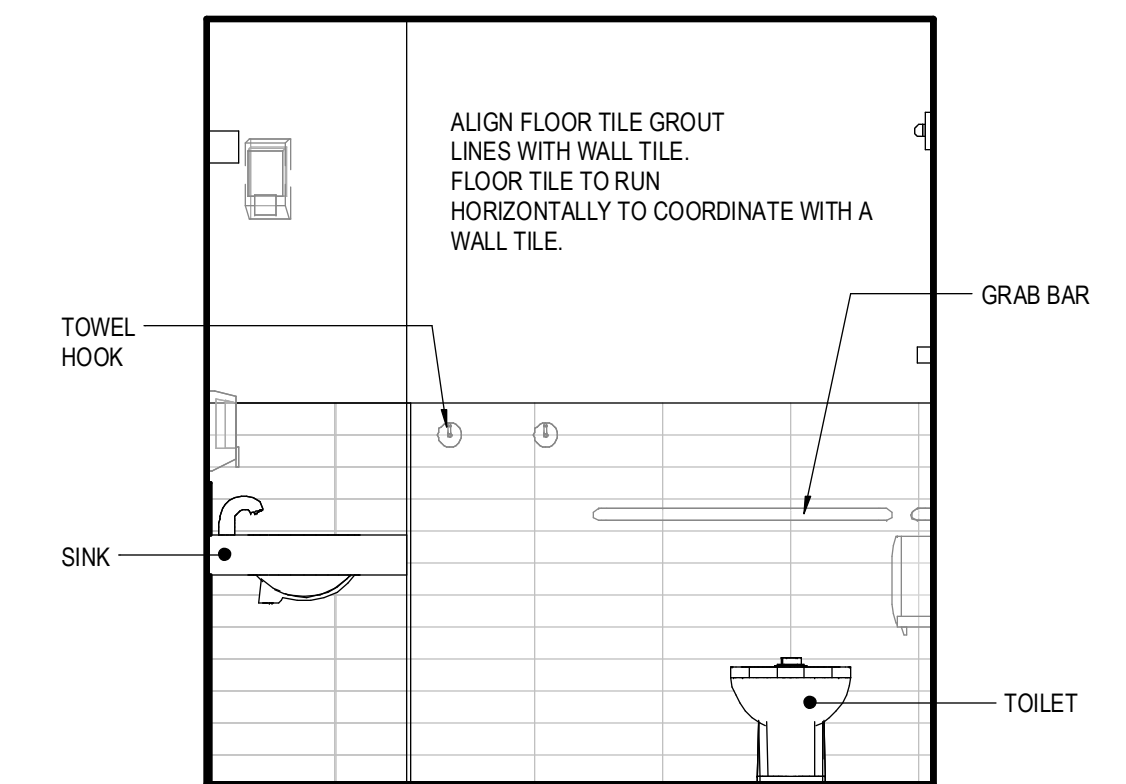
**7 TOILET (STAFF) 6017/7017 - NORTH**  
 1/2" = 1'-0"



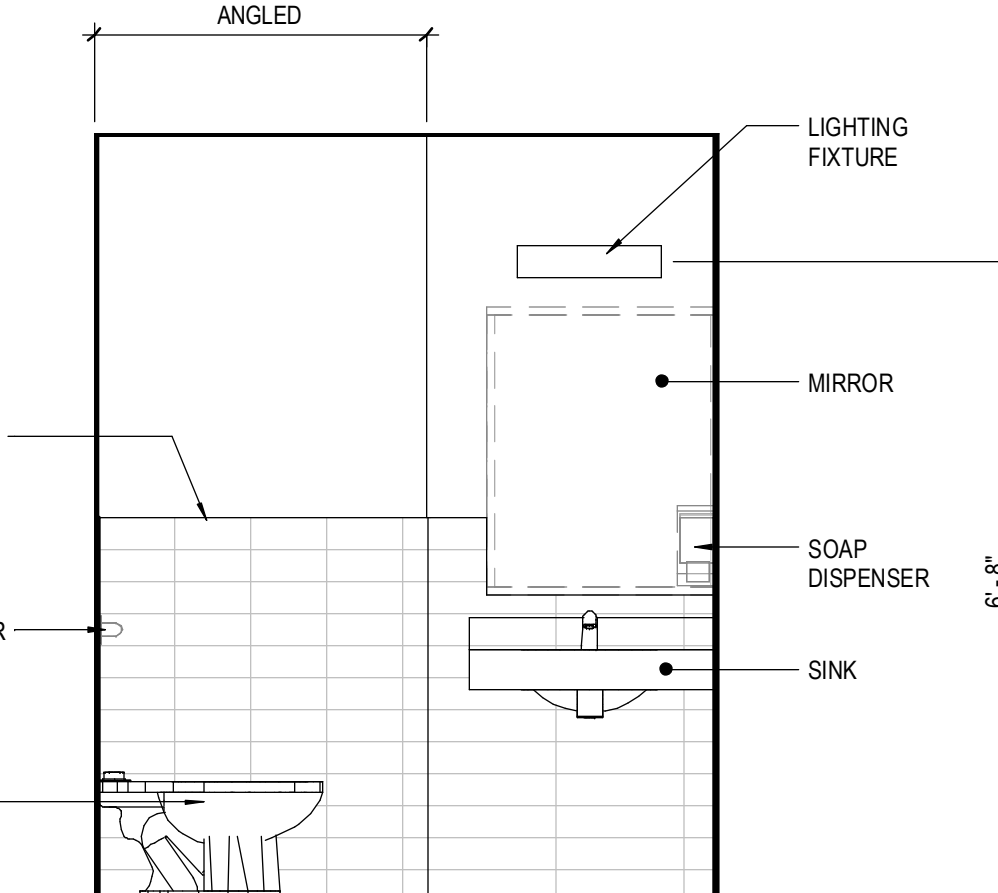
**20 TOILET (STAFF) 6062/7062 - EAST**  
 1/2" = 1'-0"



**16 TOILET (VISITOR) 6003/7003 - EAST**  
 1/2" = 1'-0"



**12 TOILET (STAFF) 6057/7057 - EAST**  
 1/2" = 1'-0"



**8 TOILET (STAFF) 6017/7017 - EAST**  
 1/2" = 1'-0"

ALIGN FLOOR TILE GROUT LINES WITH WALL TILE. FLOOR TILE TO RUN HORIZONTALLY TO COORDINATE WITH A WALL TILE.

ALIGN FLOOR TILE GROUT LINES WITH WALL TILE. FLOOR TILE TO RUN HORIZONTALLY TO COORDINATE WITH A WALL TILE.

ALIGN FLOOR TILE GROUT LINES WITH WALL TILE. FLOOR TILE TO RUN HORIZONTALLY TO COORDINATE WITH A WALL TILE.

ALIGN FLOOR TILE GROUT LINES WITH WALL TILE. FLOOR TILE TO RUN HORIZONTALLY TO COORDINATE WITH A WALL TILE.

3/29/2018 12:52:20 PM 152181.MXD East Tower 6 & 7 (017) - 04.rvt