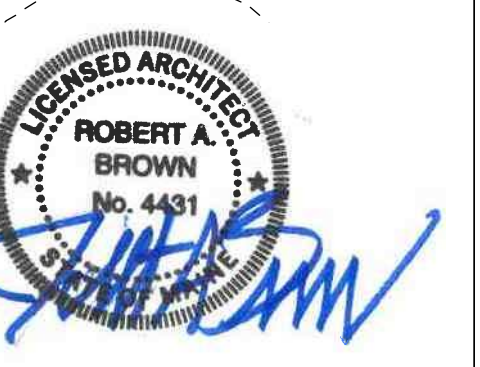


CONSULTANTS

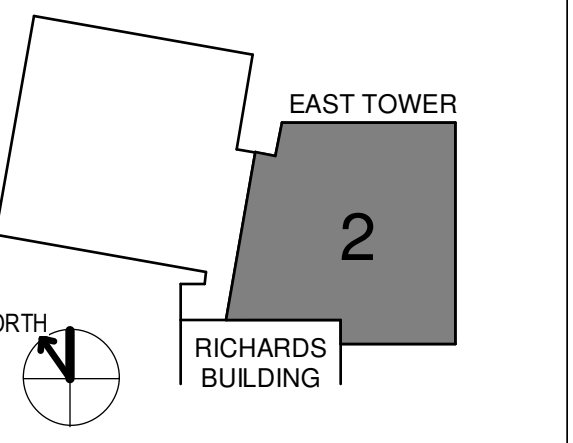
- CVL LANDSCAPE ARCHITECT
Sebago Technics
75 John Roberts Road, Suite
1A, South Portland ME 04106
- STRUCTURAL ENG. BUILDING ENVELOPE CONSULTANT
Simpson Gumpertz & Heger Inc.
41 Seaven Street, Building 1, Suite 500,
Waltham MA 02453
- MERFP ENGINEER CODE
AKF Group LLC
99 Bedford Street, 2nd Floor, Boston MA 02111
- CONSTRUCTION MANAGER
Turner Construction
2 Seaport Lane, Suite 200, Boston MA 02210
- ELEVATOR CONSULTANT
VDA (Van Dusen & Associates)
101 Summer Street, 4th Floor, Boston MA
02110
- COST ESTIMATOR
D. G. Jones International
3 Baldwin Green Common, Suite 202, Woburn MA 01801

PROJECT TITLE

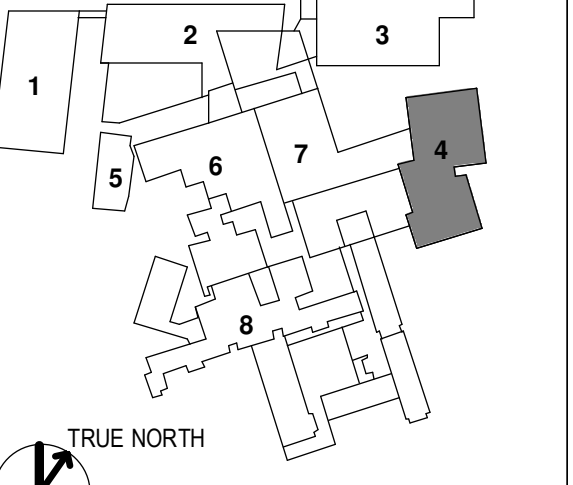
**East Tower 6 & 7
Addition**
22 Bramhall Street
Portland ME 04102



KEY PLANS



- OVERALL KEY PLAN
- 1 - GILMAN GARAGE
 - 2 - CONGRESS STREET
 - 3 - VISITOR GARAGE
 - 4 - EAST TOWER
 - 5 - CENTRAL UTILITY PLANT
 - 6 - BEAN BUILDING
 - 7 - RICHARDS BUILDING
 - 8 - MAINE GENERAL BUILDING



CONSTRUCTION DOCUMENTS

JANUARY 26, 2018

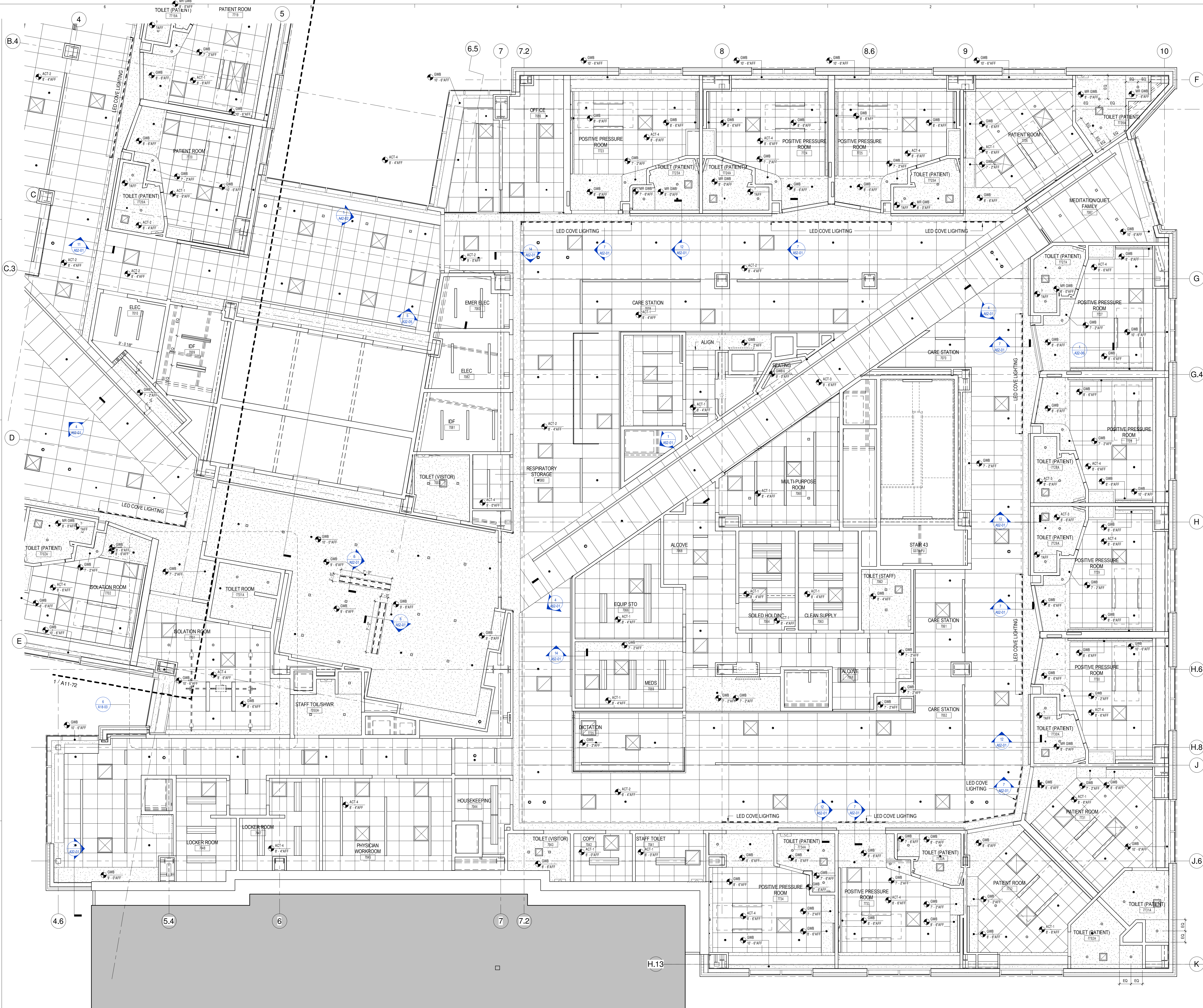
NO	ISSUE	DATE
1	ADDENDUM NO. 1	3/22/18

Job Number: 152181.000
Drawn: TEAM
Checked: JK
Approved: JK

TITLE
**LEVEL 7 RCP -
SECTOR 2**

SHEET NUMBER

A12-72



NOTE: REFER TO SECTOR 1 PLAN FOR GENERAL NOTES AND LEGENDS