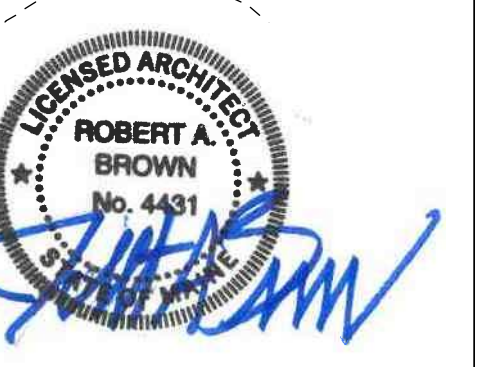


CONSULTANTS

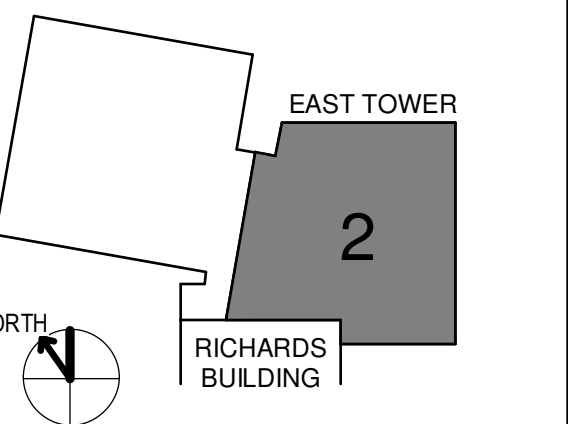
- CVL LANDSCAPE ARCHITECT
Sebago Technics
 75 John Roberts Road, Suite
 1A, South Portland ME 04106
- STRUCTURAL ENG. BUILDING ENVELOPE CONSULTANT
Stinson Gumpertz & Hagen Inc.
 41 Seaven Street, Building 1, Suite 500,
 Waltham MA 02453
- MERFP ENGINEER CODE
AKF Group LLC
 99 Bedford Street, 2nd Floor, Boston MA 02111
- CONSTRUCTION MANAGER
Turner Construction
 2 Seaport Lane, Suite 200, Boston MA 02210
- ELEVATOR CONSULTANT
VDA (Van Dusen & Associates)
 101 Summer Street, 4th Floor, Boston MA
 02110
- COST ESTIMATOR
D. G. Jones International
 3 Baldwin Green Common, Suite 202, Woburn MA 01801

PROJECT TITLE

**East Tower 6 & 7
 Addition**
 22 Bramhall Street
 Portland ME 04102

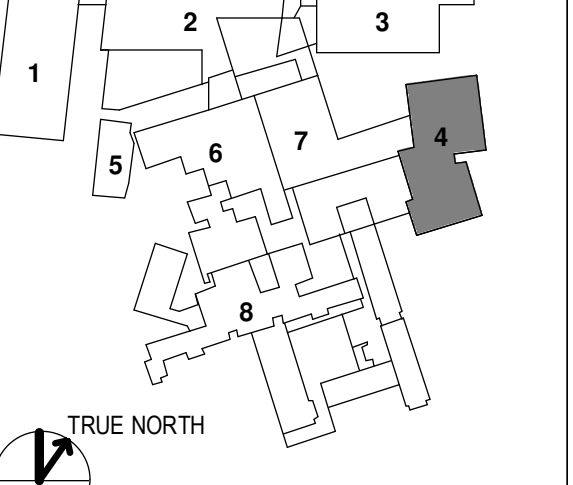


KEY PLANS



OVERALL KEY PLAN

- 1 - GILMAN GARAGE
- 2 - CONGRESS STREET
- 3 - VISITOR GARAGE
- 4 - EAST TOWER
- 5 - CENTRAL UTILITY PLANT
- 6 - BEAN BUILDING
- 7 - RICHARDS BUILDING
- 8 - MAINE GENERAL BUILDING



CONSTRUCTION DOCUMENTS

JANUARY 26, 2018

NO	ISSUE	DATE
1	ADDENDUM NO. 1	3/22/18

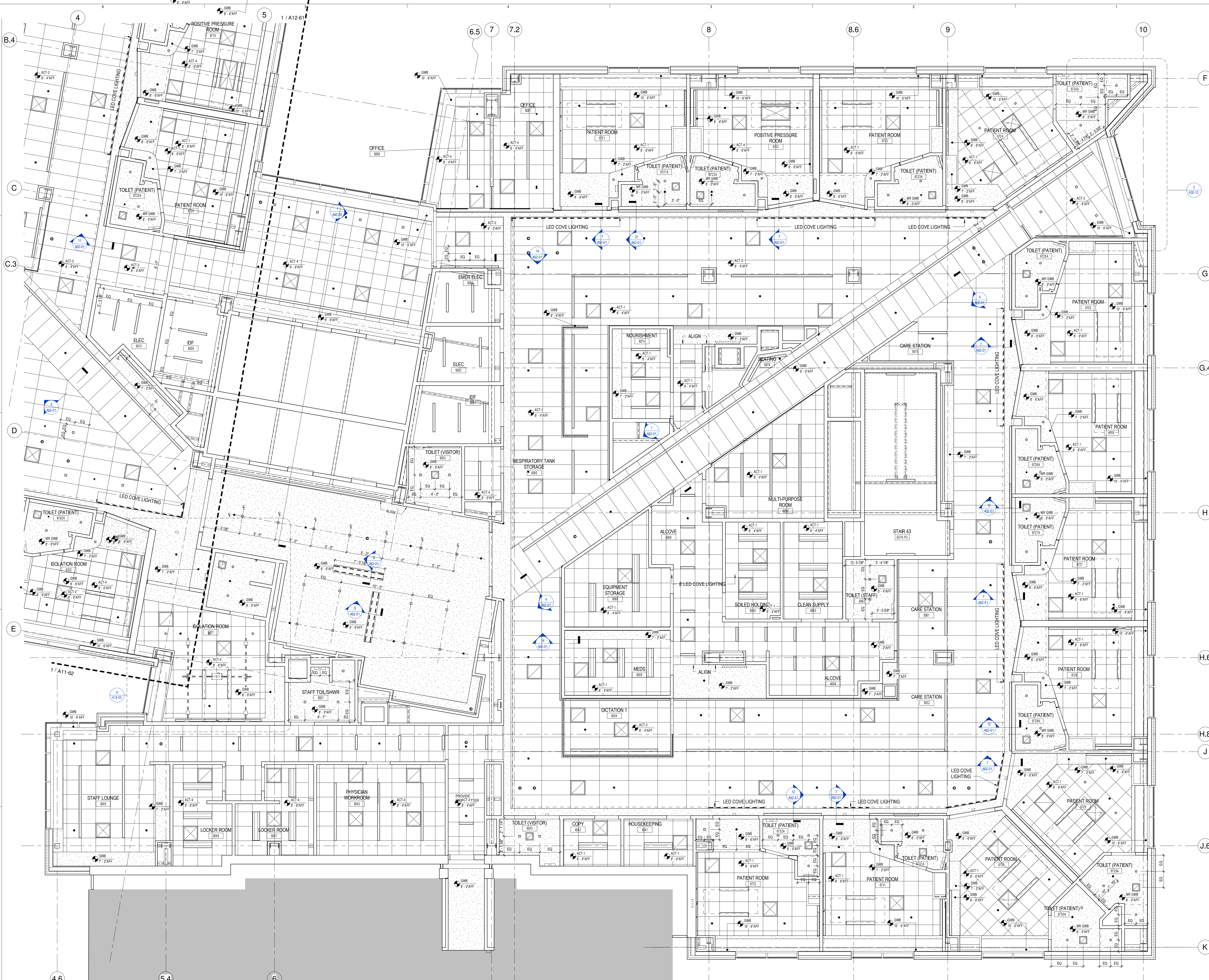
Job Number: 152181.000
 Drawn: TEAM
 Checked: JK
 Approved: JK

TITLE

**LEVEL 6 RCP -
 SECTOR 2**

SHEET NUMBER

A12-62



1 RCP LEVEL 6 - SECTOR 2
 1/4" = 1'-0"

NOTE: REFER TO SECTOR 1 PLAN FOR GENERAL NOTES AND LEGENDS