



NOTES

1. HEIGHT DIMENSIONS NOTED ON THIS PLAN ARE REFERENCED FROM FINISHED FLOOR, UNO.
2. VERIFY LOCATION OF VISIBLE CEILING ELEMENTS NOT SHOWN ON ARCHITECTURAL DRAWINGS WITH ARCHITECT PRIOR TO INSTALLATION.
3. VERIFY CLEARANCE OF CEILING ELEMENTS FOR LOCATIONS SHOWN PRIOR TO INSTALLATION.
4. COVE LIGHTING, UNDERCABINET, AND OVERHEAD CABINET LIGHTING SHALL BE CONTINUOUS ACROSS ENTIRE LENGTH OF ELEMENT & WIRED THROUGH THE SIDE OF THE FIXTURES, UNO. EXPOSED CABLE SHALL NOT BE VISIBLE TO GENERAL VIEW. COORDINATE LENGTHS OF UNDERCABINET LIGHTING WITH MILLWORK.
5. CENTER LIGHT FIXTURES, SPRINKLERS AND OTHER CEILING MOUNTED ELEMENTS ON CEILING TILE, UNO.
6. TYPICAL COVERPLATE AND DEVICE FINISHES SHALL BE WHITE, UNO.
7. FIELD VERIFY LOCATION OF ACCESS PANELS AND REVIEW WITH ARCHITECT PRIOR TO INSTALLATION. SIZE AND LOCATIONS SHALL BE COORDINATED WITH INSTALLED EQUIPMENT.
8. CEILING SYSTEM SHALL NOT BE SUPPORTED FROM DUCTWORK OR MECHANICAL UNITS. PROVIDE SUPPLEMENTAL FRAMING FOR CEILING SUPPORT AT EXPANSES OF DUCTWORK, MECHANICAL UNITS AND OTHER EXPANSES. CEILING SYSTEM SHALL NOT COME IN CONTACT WITH DUCTWORK AND MECHANICAL UNITS.
9. PAINT METAL CLOSURES, WALL ANGLES, REVEALS AND MISCELLANEOUS TRIM IN CEILING TO MATCH CEILING.
10. LIGHTING FIXTURES ARE DIMENSIONED TO CENTER OF FIXTURES, UNO.
11. VERIFY AIR DEVICES FIT IN CEILING PRIOR TO PROCEEDING WITH FRAMING CEILING. NOTIFY ARCHITECT OF DISCREPANCIES.
12. SEE ELECTRICAL DRAWINGS FOR EMERGENCY LIGHTING LOCATIONS.
13. SEE LIGHTING DRAWINGS FOR LIGHTING FIXTURE LOCATIONS AND TYPES.

LEGEND

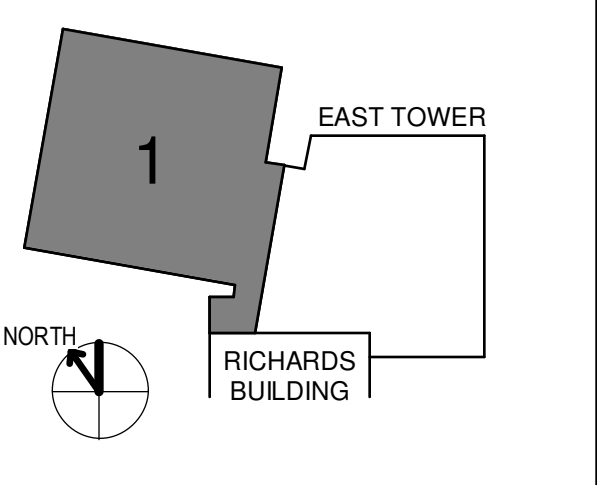
- DRYWALL CEILING / SOFFIT
 - 2X2 ACOUSTICAL CEILING GRID AND TILE
 - ACCESS PANEL
 - SUPPLY DIFFUSER
 - RETURN DIFFUSER
 - LINEAR DIFFUSER
 - SLOT DIFFUSER
 - CEILING MOUNTED OCCUPANCY SENSOR
 - CEILING MOUNTED SPEAKER
 - CEILING MOUNTED CAMERA
 - EXIT SIGN
 - EMERGENCY STROBE
 - EMERGENCY SPOTLIGHT
 - ROLLER SHADES
 - CEILING MATERIAL
 - CEILING HEIGHT
- LIGHT FIXTURE SYMBOLS**
- LIGHTING FIXTURE ABOVE CEILING
 - RECESSED DOWNLIGHT (SQUARE)
 - RECTANGULAR RECESSED WALLWASH
 - STRIP FIXTURE
 - RECESSED LINEAR SLOT
 - UNDERCABINET LIGHTING
 - INDIRECT STRIP FIXTURE (ABOVE CEILING)

PROJECT TITLE

East Tower 6 & 7 Addition
22 Bramhall Street
Portland ME 04102

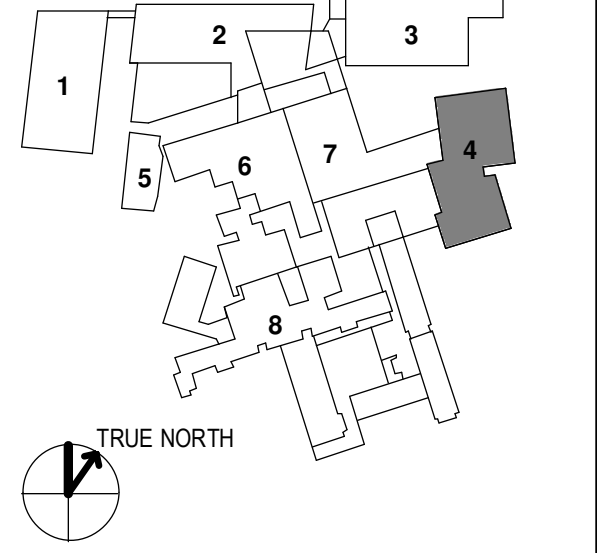


KEY PLANS



OVERALL KEY PLAN

- 1 - GILMAN GARAGE
- 2 - CONGRESS STREET
- 3 - VISITOR GARAGE
- 4 - EAST TOWER
- 5 - CENTRAL UTILITY PLANT
- 6 - BEAN BUILDING
- 7 - RICHARDS BUILDING
- 8 - MAINE GENERAL BUILDING



CONSTRUCTION DOCUMENTS
JANUARY 26, 2018

NO	ISSUE	DATE
1	ADDENDUM NO. 1	3/22/18

Job Number: 152181.000
Drawn: TEAM
Checked: JK
Approved: JK

TITLE
LEVEL 6 RCP - SECTOR 1

SHEET NUMBER

A12-61