

**NOTES**

1. CLASS A ROOFING TYP
2. TAPERED INSULATION 1/4" PER FOOT, TYP. (1/2" PER FOOT AT CRICKETS)
3. 6" INSULATION MIN.

225 Franklin Street, Suite 1100  
Boston, MA 02110  
617.478.8300  
617.478.8321  
www.perkinswill.com

CLIENT

**Maine Medical Center**  
MaineHealth

22 Bramhall Street  
Portland ME 04102

CONSULTANTS

OVIAL LANDSCAPE ARCHITECT  
**Sebago Technics**  
75 John Roberts Road, Suite 1A, South Portland ME 04106

STRUCTURAL ENG. BUILDING ENVELOPE CONSULTANT  
**Stinson Gumpertz & Hager Inc.**  
41 Seven Street, Building 1, Suite 500, Waltham MA 02453

MEP ENGINEER/ CODE  
**AKF Group LLC**  
99 Bedford Street, 2nd Floor, Boston MA 02111

CONSTRUCTION MANAGER  
**Turner Construction**  
2 Seaport Lane, Suite 200, Boston MA 02210

ELEVATOR CONSULTANT  
**VDA (Van Dusen & Associates)**  
101 Summer Street, 4th Floor, Boston MA 02110

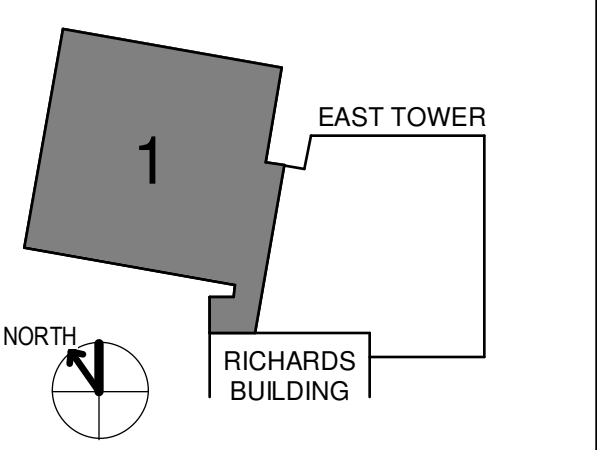
COST ESTIMATOR  
**D. G. Jones International**  
3 Baldwin Green Common, Suite 202, Woburn MA 01801

PROJECT TITLE

**East Tower 6 & 7 Addition**  
22 Bramhall Street  
Portland ME 04102

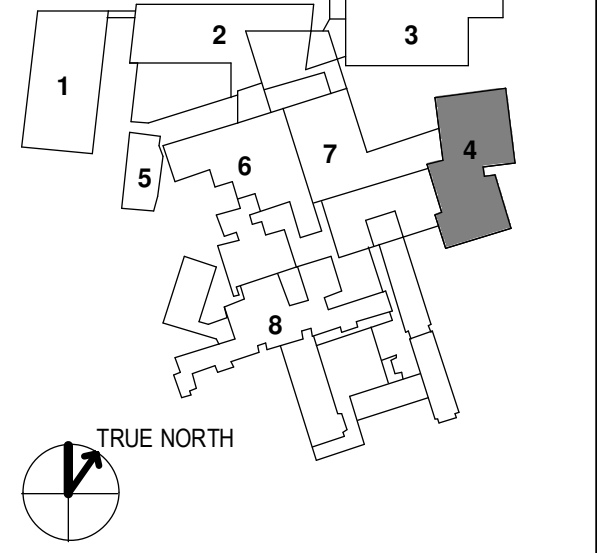


KEY PLANS



OVERALL KEY PLAN

- 1 - GILMAN GARAGE
- 2 - CONGRESS STREET
- 3 - VISITOR GARAGE
- 4 - EAST TOWER
- 5 - CENTRAL UTILITY PLANT
- 6 - BEAN BUILDING
- 7 - RICHARDS BUILDING
- 8 - MAINE GENERAL BUILDING



CONSTRUCTION DOCUMENTS  
JANUARY 26, 2018

NO	ISSUE	DATE
Job Number	152181.000	
Drawn	TEAM	
Checked		
Approved	JK	

TITLE

**ROOF - SECTOR 1**

SHEET NUMBER

**A11-81**

Copyright 2017 @ Perkins + Will

3/29/2018 12:43:00 PM  
152181.MXD East Tower 6 & 7 (0217)\_dmlshen.nit