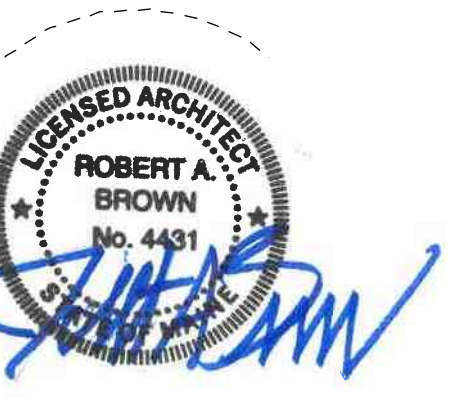


CONSULTANTS

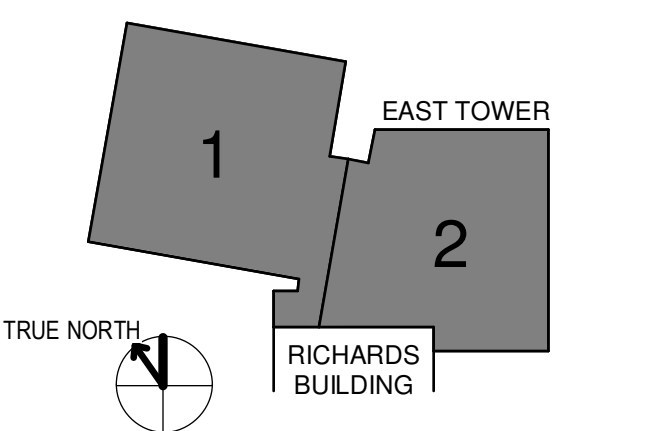
- CVL/LANDSCAPE ARCHITECT
Sebago Technics
75 John Roberts Road, Suite
1A, South Portland ME 04106
- STRUCTURAL ENGR/BUILDING ENVELOPE CONSULTANT
Slingshot Structures & Design Inc.
41 Seaton Street, Building 1, Suite 500,
Waltham MA 02453
- MERFP ENGINEER CODE
AKF Group LLC
99 Bedford Street, 2nd Floor, Boston MA 02111
- CONSTRUCTION MANAGER
Turner Construction
2 Seaport Lane, Suite 200, Boston MA 02210
- ELEVATOR CONSULTANT
VDA (Van Dusen & Associates)
101 Summer Street, 4th Floor, Boston MA
02110
- COST ESTIMATOR
D. G. Jones International
3 Baldwin Green Common, Suite 202, Woburn MA 01801

PROJECT TITLE

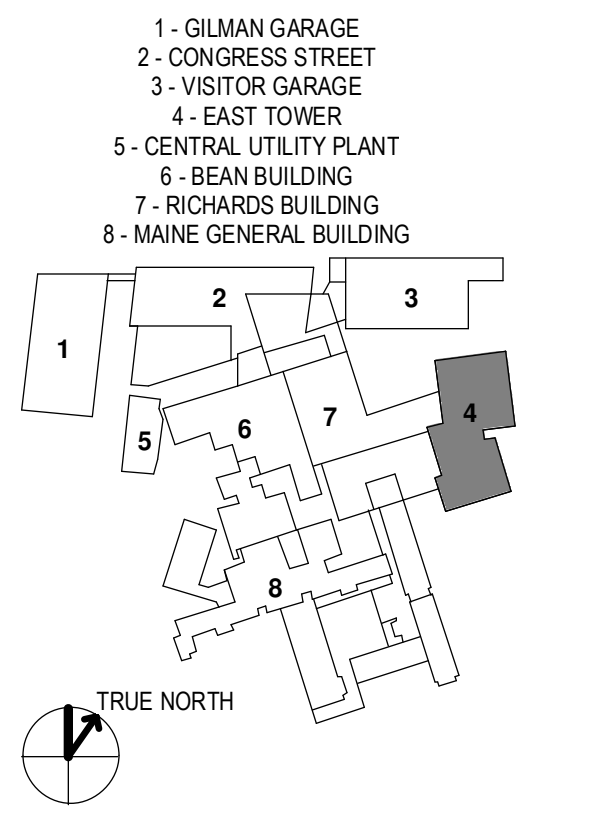
**East Tower 6 & 7
Addition**
22 Bramhall Street
Portland ME 04102



KEY PLANS



OVERALL KEY PLAN



CONSTRUCTION DOCUMENTS
JANUARY 26, 2018

NO	ISSUE	DATE
1	ADDENDUM NO. 1	3/22/18

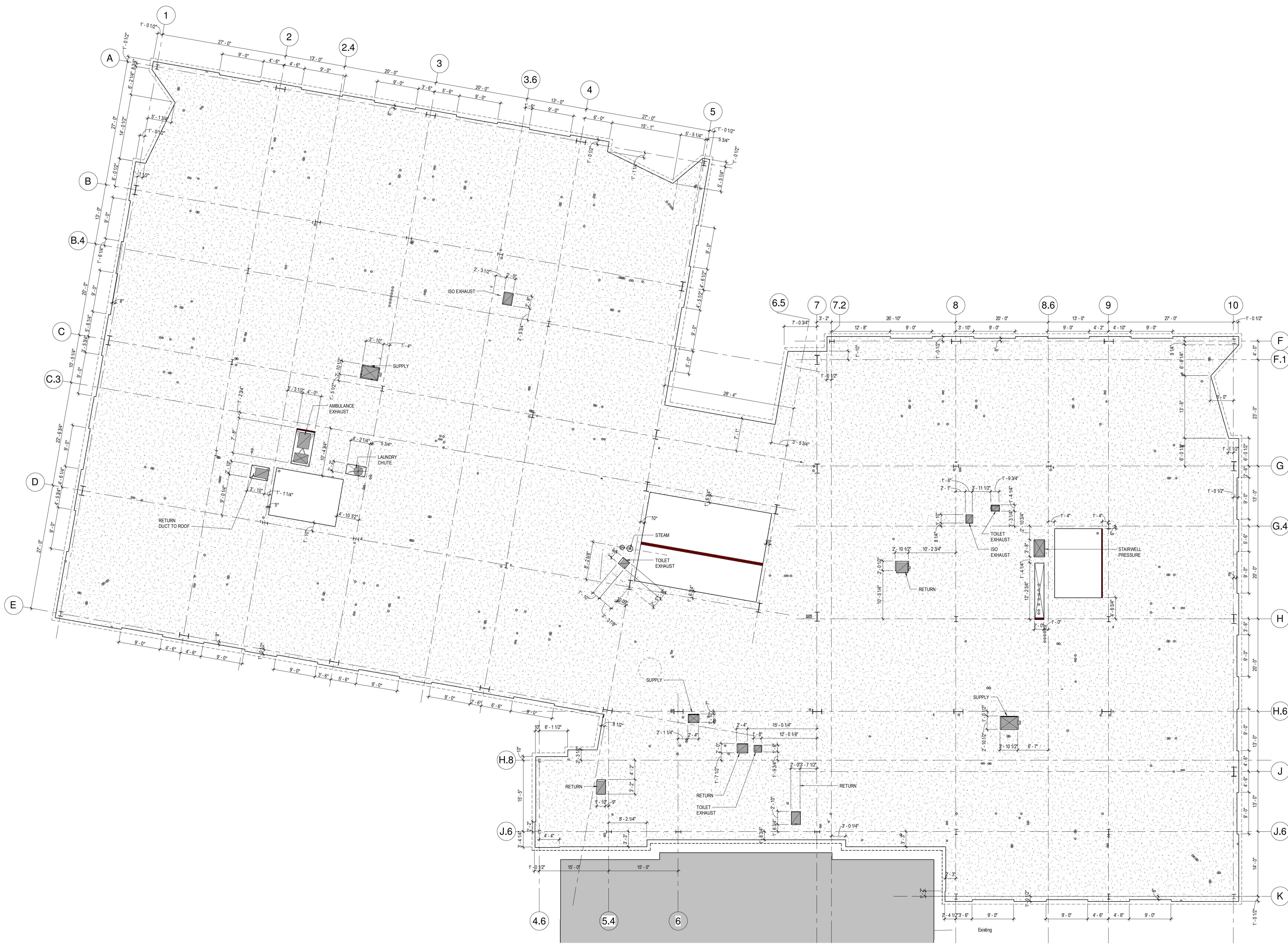
Job Number: 152181.000
Drawn: TEAM
Checked: JK
Approved: JK

TITLE

**SLAB PLAN -
LEVEL 7**

SHEET NUMBER

A09-07



1 LEVEL 7 SLAB EDGE PLAN
1/8" = 1'-0"