

CONSULTANTS

CVL/LANDSCAPE ARCHITECT  
**Sebago Technics**  
75 John Roberts Road, Suite  
1A, South Portland ME 04106

STRUCTURAL/ENR/BUILDING ENVELOPE CONSULTANT  
**Stinson Gumpertz & Heper Inc.**  
41 Sevon Street, Building 1, Suite 500,  
Waltham MA 02453

MERFP ENGINEER/COE  
**AKF Group LLC**  
99 Bedford Street, 2nd Floor, Boston MA 02111

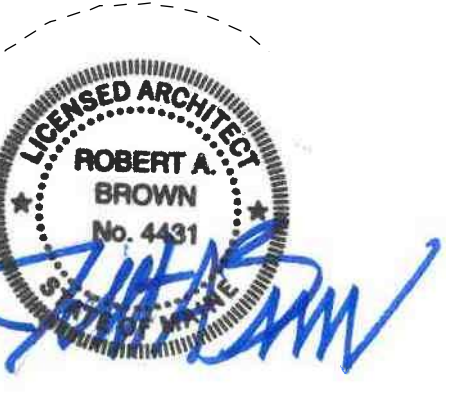
CONSTRUCTION MANAGER  
**Turner Construction**  
2 Seaport Lane, Suite 200, Boston MA 02210

ELEVATOR CONSULTANT  
**VDA (Van Dusen & Associates)**  
101 Summer Street, 4th Floor, Boston MA  
02110

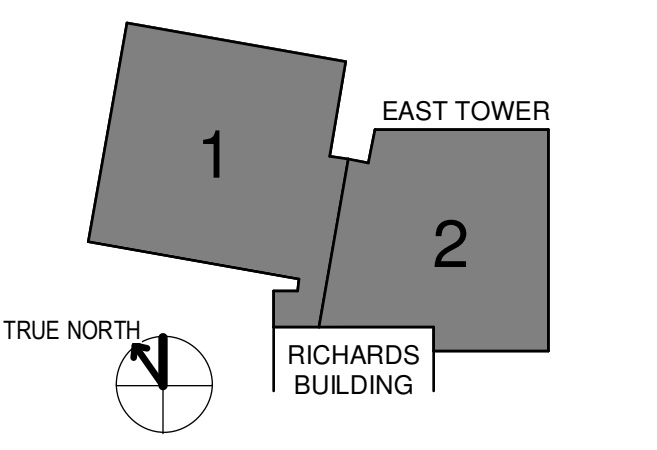
COST ESTIMATOR  
**D. G. Jones International**  
3 Baldwin Green Common, Suite 202, Woburn MA 01801

PROJECT TITLE

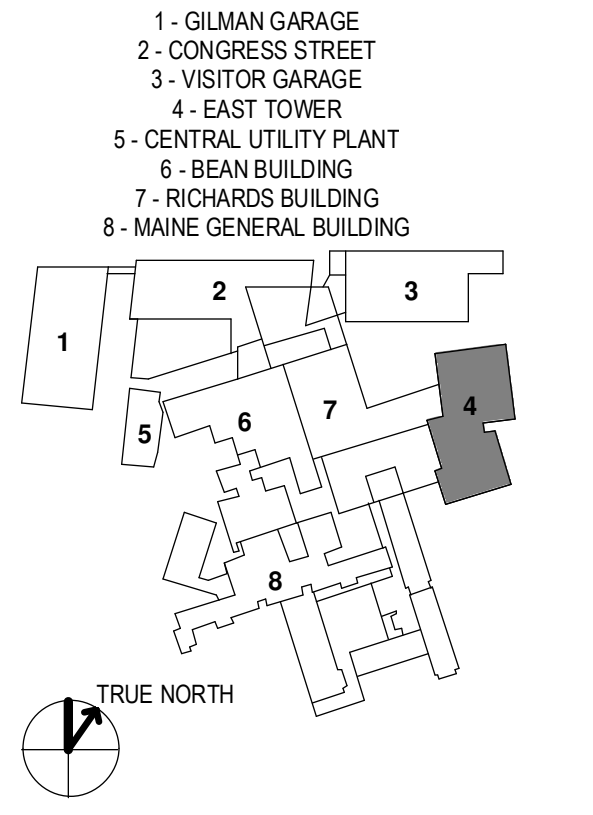
**East Tower 6 & 7  
Addition**  
22 Bramhall Street  
Portland ME 04102



KEY PLANS



OVERALL KEY PLAN



CONSTRUCTION DOCUMENTS  
JANUARY 26, 2018

NO	ISSUE	DATE
1	ADDENDUM NO. 1	3/22/18

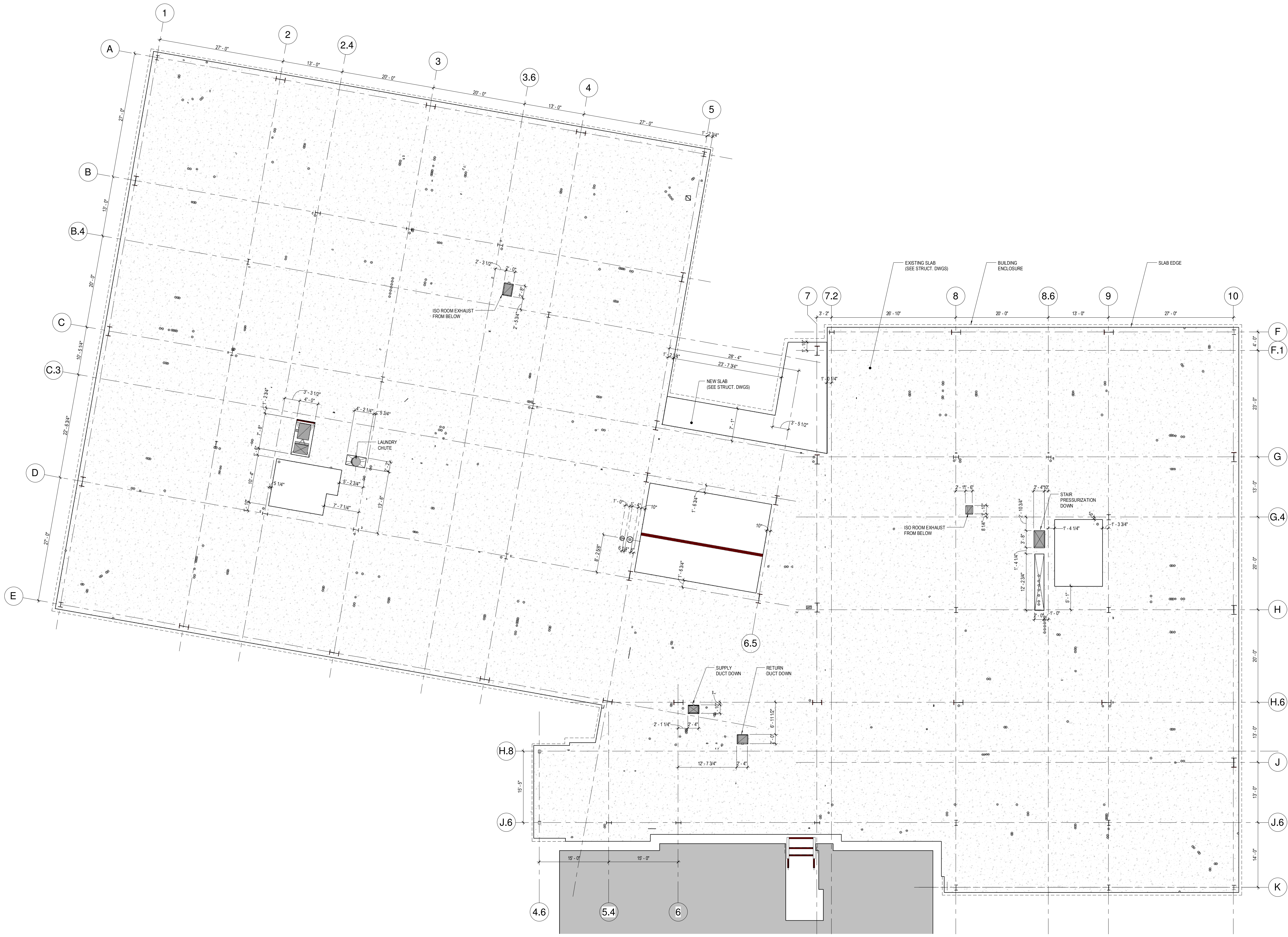
Job Number 152181.000  
Drawn TEAM  
Checked JK  
Approved JK

TITLE

**SLAB PLAN -  
LEVEL 6**

SHEET NUMBER

**A09-06**



**1 LEVEL 6 SLAB EDGE PLAN**  
1/8" = 1'-0"

3/20/2018 12:35:52 PM  
152181.MDC-East Tower 6 & 7 (DIT)\_detailed.rvt