

**APPLICABLE CODES & STANDARDS**

The State of Maine requires municipalities with more than 4,000 residents to adopt and enforce the Maine Uniform Building and Energy Code (MUBEC). The next edition of the MUBEC became effective on January 23, 2018. The following codes and standards are applicable to the project.

- International Building Code (IBC), 2015 Edition with ME Amendments
- International Existing Building Code (IEBC), 2015 Edition with ME Amendments
- International Energy Conservation Code (IECC), 2009 Edition with ME Amendments
- American Society of Heating, Refrigerating and Air-Conditioning Engineers (ASHRAE) Standard 62.1, Standard for Ventilation and Indoor Air Quality, 2013 edition

In addition to the codes identified above, the State Fire Marshal's Office promulgates the Rules of the State Fire Marshal, which adopt numerous NFPA codes and standards, including the following:

- NFPA 1, Uniform Fire Code, 2006 Edition with ME Amendments
- NFPA 13, Standard for Installation of Sprinkler Systems, 2016 Edition

The Plumbers' Examining Board promulgates the Maine Plumbing Code, which includes the following:

- International Association of Plumbing and Mechanical Officials (IAPMO), 2015 Uniform Plumbing Code (UPC), with ME amendments

The Electricians' Examining Board adopts and amends the following electrical code:

- NFPA 70, National Electrical Code, 2017 Edition

The following federal regulation also applies to the project (as referenced by the Maine Human Rights Commission - 5 M.R.S. §4594-G):

- Americans with Disabilities Act (ADA), 2010 Standards for Accessible Design

The Joint Commission also requires compliance with the following:

- NFPA 101, Life Safety Code, 2012 Edition
- NFPA 99, Health Care Facilities Code, 2012 Edition

The following design standards will also be used for the project:

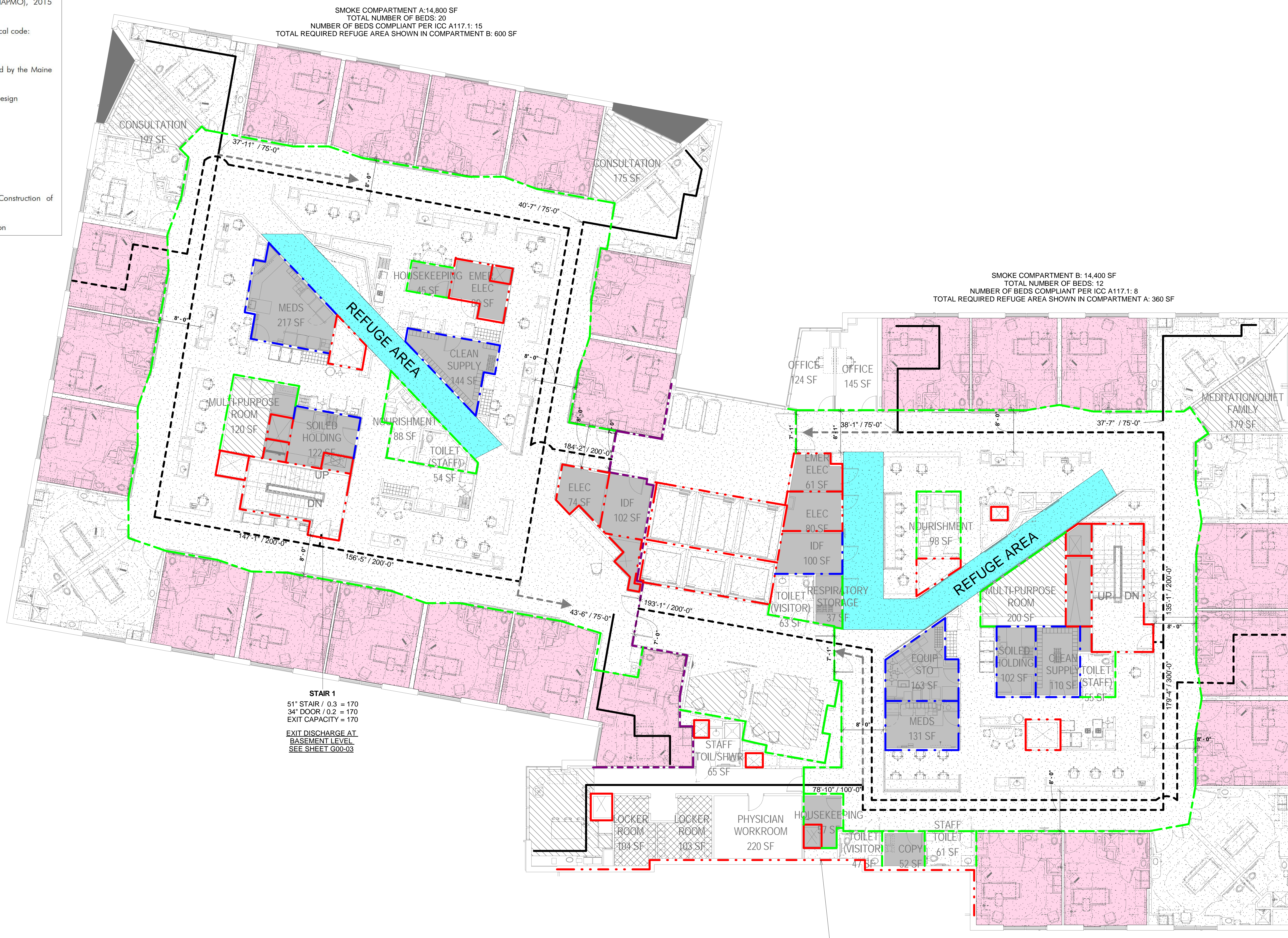
- Facilities Guidelines Institute (FGI), Guidelines for Design and Construction of Hospitals and Outpatient Facilities, 2014 Edition
- ASHRAE Standard 170, Ventilation of Healthcare Facilities, 2013 edition

SMOKE COMPARTMENT A: 14,800 SF  
TOTAL NUMBER OF BEDS: 20  
NUMBER OF BEDS COMPLIANT PER ICC A117.1: 15  
TOTAL REQUIRED REFUGE AREA SHOWN IN COMPARTMENT B: 600 SF

SMOKE COMPARTMENT B: 14,400 SF  
TOTAL NUMBER OF BEDS: 12  
NUMBER OF BEDS COMPLIANT PER ICC A117.1: 8  
TOTAL REQUIRED REFUGE AREA SHOWN IN COMPARTMENT A: 360 SF

OCCUPANT LOAD LEVEL 7			
USE	FLOOR AREA	FLOOR AREA PER OCCUPANT (SF / OCC)	OCCUPANT LOAD
CONSULTATION	333 SF	15	23
FAMILY LOUNGE	255 SF	15	18
INPATIENT	24521 SF	120	205
MEDITATION / QUIET FAMILY	153 SF	15	11
MULTI-PURPOSE ROOM	297 SF	15	20
OFFICE	829 SF	100	9
STAFF LOCKERS	222 SF	50	5
STAFF LOUNGE	234 SF	15	16
STORAGE / UTILITIES	2001 SF	300	7
	28845 SF		314

EXIT CAPACITY LEVEL 7						
EXIT	STAIR WIDTH	STAIR EXIT ALLOWANCE (IN / PERSON)	STAIR CAPACITY (PERSONS)	DOOR WIDTH	DOOR EXIT ALLOWANCE (IN / PERSON)	DOOR CAPACITY (PERSONS)
STAIR 1	51"	0.3	170	34"	0.2	170
STAIR 2	51"	0.3	170	34"	0.2	170
						340



STAIR 1  
51" STAIR / 0.3 = 170  
34" DOOR / 0.2 = 170  
EXIT CAPACITY = 170  
EXIT DISCHARGE AT BASEMENT LEVEL  
SEE SHEET G00-03

STAIR 2  
51" STAIR / 0.3 = 170  
34" DOOR / 0.2 = 170  
EXIT CAPACITY = 170  
EXIT DISCHARGE AT GROUND FLOOR  
SEE SHEET G00-03

NOTE: AT LEAST 10% OF THE SLEEPING UNITS MUST BE ACCESSIBLE UNITS (IBC 1107.5.3.1 & ADA 223.2.1). THE NUMBER OF ACCESSIBLE UNITS COMPLIES WITH THIS REQUIREMENT AS FOLLOWS:

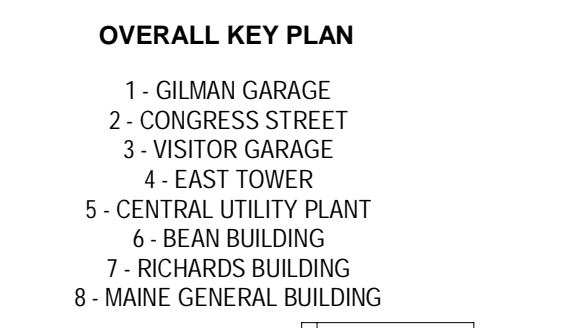
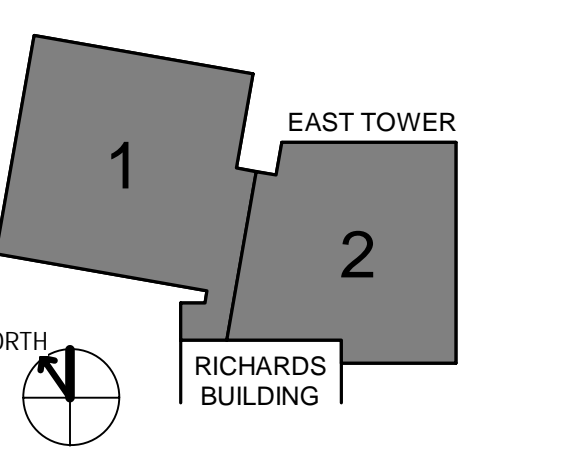
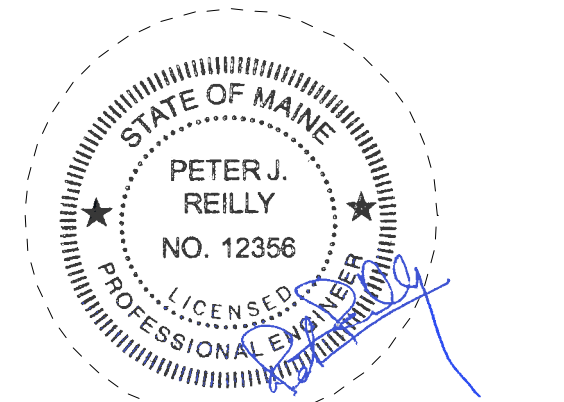
TOTAL UNITS: 32  
REQUIRED ACCESSIBLE UNITS: 4  
PROVIDED ACCESSIBLE UNITS: 23

ACCESSIBLE MEANS OF EGRESS ARE IN ACCORDANCE WITH IBC 1009. THE ELEVATORS ARE PROVIDED WITH STANDBY POWER AND THE BUILDING IS PROVIDED WITH AN AUTOMATIC SPRINKLER SYSTEM SUCH THAT THE EXIT STAIRS ARE NOT REQUIRED TO HAVE AREAS OF REFUGE (IBC 1009.3 EXCEPTION 5). SEE FLOOR PLAN FOR AREAS OF REFUGE PROVIDED FOR EACH SMOKE COMPARTMENT.

WALL RATING LEGEND	
LINE TYPE	DESIGNATION
---	UNRATED SMOKE PARTITION
---	1-HR RATED SMOKE BARRIER
---	1-HR RATED FIRE BARRIER
---	2-HR RATED FIRE BARRIER

LEVEL 7  
SCALE: 1/8" = 1'-0"

LEGEND		
LINE TYPE / SYMBOL	COMPONENT TYPE	DESIGNATION
---	EXIT ACCESS TRAVEL DISTANCE	
---	COMMON PATH OF TRAVEL	
---	DEAD END CORRIDOR	ACTUAL / ALLOWED
---	SECONDARY EGRESS PATH	
---	REFUGE AREA	AREA (SF)
---	ACCESSIBLE UNITS	NA



NO	ISSUE	DATE
2	ADDENDUM NO. 2	03/29/18
1	ADDENDUM NO. 1	03/22/18

Job Number: B150312-000  
Drawn: MMS  
Checked: CMA  
Approved: CMA