

APPLICABLE CODES & STANDARDS

The State of Maine requires municipalities with more than 4,000 residents to adopt and enforce the Maine Uniform Building and Energy Code (MUBEC). The next edition of the MUBEC became effective on January 23, 2018. The following codes and standards are applicable to the project.

- International Building Code (IBC), 2015 Edition with ME Amendments
- International Existing Building Code (IEBC), 2015 Edition with ME Amendments
- International Energy Conservation Code (IECC), 2009 Edition with ME Amendments
- American Society of Heating, Refrigerating and Air-Conditioning Engineers (ASHRAE) Standard 62.1, Standard for Ventilation and Indoor Air Quality, 2013 edition

In addition to the codes identified above, the State Fire Marshal's Office promulgates the Rules of the State Fire Marshal, which adopt numerous NFPA codes and standards, including the following:

- NFPA 1, Uniform Fire Code, 2006 Edition with ME Amendments
- NFPA 13, Standard for Installation of Sprinkler Systems, 2016 Edition

The Plumbers' Examining Board promulgates the Maine Plumbing Code, which includes the following:

- International Association of Plumbing and Mechanical Officials (APMO), 2015 Uniform Plumbing Code (UPC), with ME amendments

The Electricians' Examining Board adopts and amends the following electrical code:

- NFPA 70, National Electrical Code, 2017 Edition

The following federal regulation also applies to the project (as referenced by the Maine Human Rights Commission - 5 M.R.S. §4594-G):

- Americans with Disabilities Act (ADA), 2010 Standards for Accessible Design

The Joint Commission also requires compliance with the following:

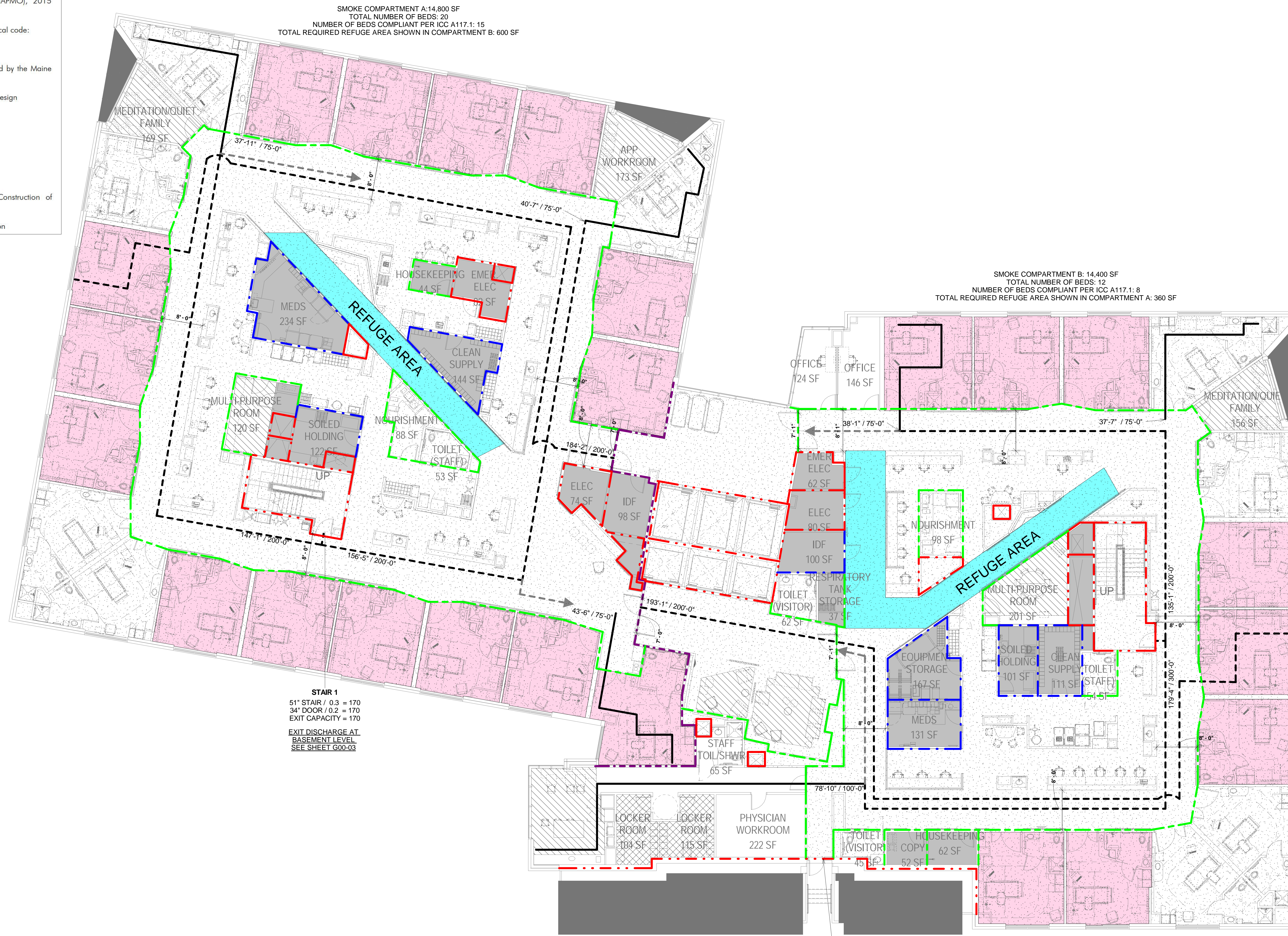
- NFPA 101, Life Safety Code, 2012 Edition
- NFPA 99, Health Care Facilities Code, 2012 Edition

The following design standards will also be used for the project:

- Facilities Guidelines Institute (FGI), Guidelines for Design and Construction of Hospitals and Outpatient Facilities, 2014 Edition
- ASHRAE Standard 170, Ventilation of Healthcare Facilities, 2013 edition

| USE | OCCUPANT LOAD LEVEL 6 | | |
|---------------------------|-----------------------|------------------------------------|---------------|
| | FLOOR AREA | FLOOR AREA PER OCCUPANT (SF / OCC) | OCCUPANT LOAD |
| APP WORKROOM | 169 SF | 15 | 12 |
| FAMILY LOUNGE | 251 SF | 15 | 17 |
| INPATIENT | 24506 SF | 120 | 205 |
| MEDITATION / QUIET FAMILY | 317 SF | 15 | 22 |
| MULTI-PURPOSE ROOM | 297 SF | 15 | 20 |
| OFFICE | 830 SF | 100 | 9 |
| STAFF LOCKERS | 222 SF | 50 | 5 |
| STAFF LOUNGE | 240 SF | 15 | 16 |
| STORAGE / UTILITIES | 2012 SF | 300 | 7 |
| | 28844 SF | | 313 |

| EXIT | STAIR WIDTH | STAIR EXIT ALLOWANCE (IN / PERSON) | EXIT CAPACITY LEVEL 6 | | |
|---------|-------------|------------------------------------|--------------------------|------------|-----------------------------------|
| | | | STAIR CAPACITY (PERSONS) | DOOR WIDTH | DOOR EXIT ALLOWANCE (IN / PERSON) |
| STAIR 1 | 51" | 0.3 | 170 | 34" | 0.2 |
| STAIR 2 | 51" | 0.3 | 170 | 34" | 0.2 |
| | | | | | 170 |
| | | | | | 340 |



SMOKE COMPARTMENT A: 14,800 SF
TOTAL NUMBER OF BEDS: 20
NUMBER OF BEDS COMPLIANT PER ICC A117.1: 15
TOTAL REQUIRED REFUGE AREA SHOWN IN COMPARTMENT B: 600 SF

SMOKE COMPARTMENT B: 14,400 SF
TOTAL NUMBER OF BEDS: 12
NUMBER OF BEDS COMPLIANT PER ICC A117.1: 8
TOTAL REQUIRED REFUGE AREA SHOWN IN COMPARTMENT A: 360 SF

STAIR 1
51" STAIR / 0.3 = 170
34" DOOR / 0.2 = 170
EXIT CAPACITY = 170
EXIT DISCHARGE AT BASEMENT LEVEL
SEE SHEET G00-03

STAIR 2
51" STAIR / 0.3 = 170
34" DOOR / 0.2 = 170
EXIT CAPACITY = 170
EXIT DISCHARGE AT GROUND FLOOR
SEE SHEET G00-03

NOTE: AT LEAST 10% OF THE SLEEPING UNITS MUST BE ACCESSIBLE UNITS (IBC 1107.5.3.1 & ADA 223.2.1). THE NUMBER OF ACCESSIBLE UNITS COMPLIES WITH THIS REQUIREMENT AS FOLLOWS:

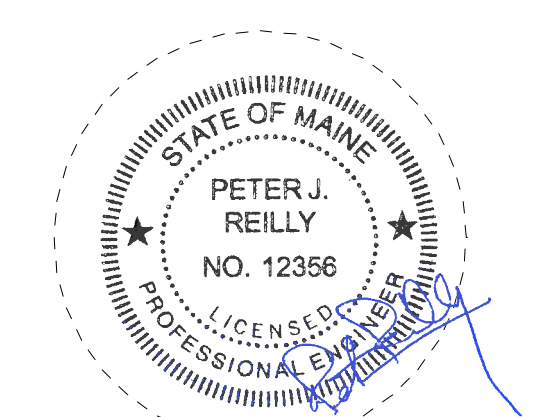
TOTAL UNITS: 32
REQUIRED ACCESSIBLE UNITS: 4
PROVIDED ACCESSIBLE UNITS: 23

ACCESSIBLE MEANS OF EGRESS ARE IN ACCORDANCE WITH IBC 1009. THE ELEVATORS ARE PROVIDED WITH STANDBY POWER AND THE BUILDING IS PROVIDED WITH AN AUTOMATIC SPRINKLER SYSTEM SUCH THAT THE EXIT STAIRS ARE NOT REQUIRED TO HAVE AREAS OF REFUGE (IBC 1009.3 EXCEPTION 5). SEE FLOOR PLAN FOR AREAS OF REFUGE PROVIDED FOR EACH SMOKE COMPARTMENT.

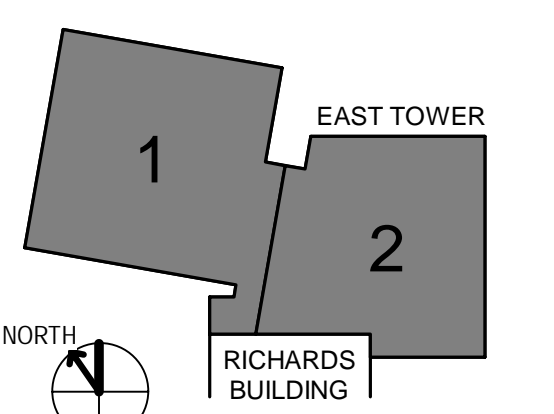
| LINE TYPE | DESIGNATION |
|-----------|--------------------------|
| --- | UNRATED SMOKE PARTITION |
| --- | 1-HR RATED SMOKE BARRIER |
| --- | 1-HR RATED FIRE BARRIER |
| --- | 2-HR RATED FIRE BARRIER |

LEVEL 6
SCALE: 1/8" = 1'-0"

| LINE TYPE / SYMBOL | COMPONENT TYPE | DESIGNATION |
|--------------------|-----------------------------|------------------|
| --- | EXIT ACCESS TRAVEL DISTANCE | ACTUAL / ALLOWED |
| --- | COMMON PATH OF TRAVEL | |
| --- | DEAD END CORRIDOR | |
| --- | SECONDARY EGRESS PATH | |
| --- | REFUGE AREA | AREA (SF) |
| --- | ACCESSIBLE UNITS | NA |



KEY PLANS



- OVERALL KEY PLAN
1. GILMAN GARAGE
2. CONGRESS STREET
3. VISITOR GARAGE
4. EAST TOWER
5. CENTRAL UTILITY PLANT
6. REAR BUILDING
7. RICHARDS BUILDING
8. MAINE GENERAL BUILDING

CONSTRUCTION DOCUMENTS
JANUARY 26, 2018

| NO | ISSUE | DATE |
|----|----------------|----------|
| 2 | ADDENDUM NO. 2 | 03/29/18 |
| 1 | ADDENDUM NO. 1 | 03/22/18 |
| NO | ISSUE | DATE |

Job Number: B150312-000
Drawn: MMS
Checked: CMA
Approved: CMA

TITLE
CODE COMPLIANCE PLAN - LEVEL 6

SHEET NUMBER

G01-60