

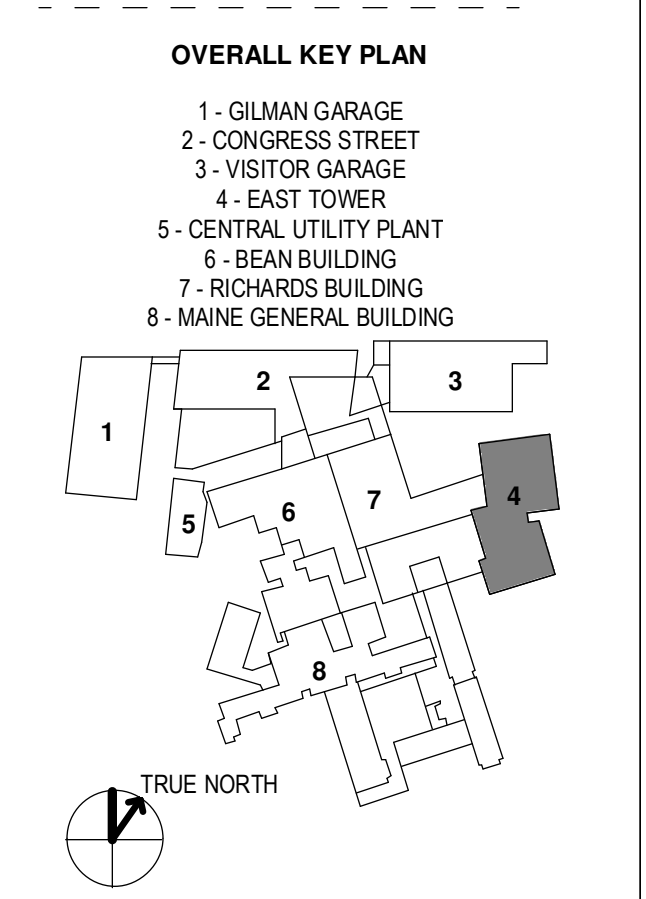
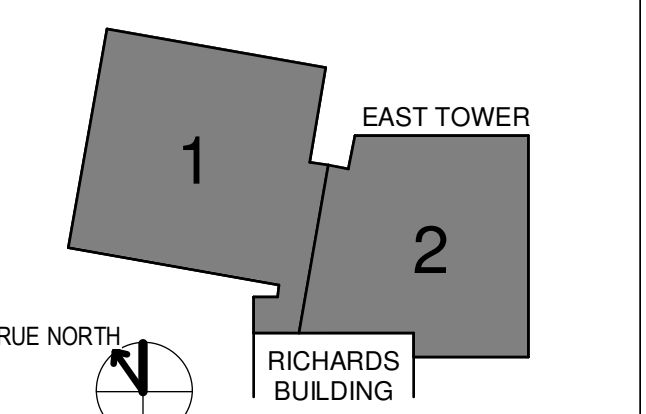
CONSULTANTS

- CVL/LANDSCAPE ARCHITECT
Sebago Technics
75 John Roberts Road, Suite
1A, South Portland ME 04106
- STRUCTURAL/ENR/BUILDING ENVELOPE CONSULTANT
Stinson Gumpertz & Hager Inc.
41 Seyon Street, Building 1, Suite 500,
Waltham MA 02453
- MERFP ENGINEER/COE
AKF Group LLC
99 Bedford Street, 2nd Floor, Boston MA 02111
- CONSTRUCTION MANAGER
Turner Construction
2 Seaport Lane, Suite 200, Boston MA 02210
- ELEVATOR CONSULTANT
VDA (Van Dusen & Associates)
101 Summer Street, 4th Floor, Boston MA
02110
- COST ESTIMATOR
D. G. Jones International
3 Baldwin Green Common, Suite 202, Woburn MA 01801

PROJECT TITLE

**East Tower 6 & 7
Addition**
22 Bramhall Street
Portland ME 04102

KEY PLANS



CONSTRUCTION DOCUMENTS
JANUARY 26, 2018

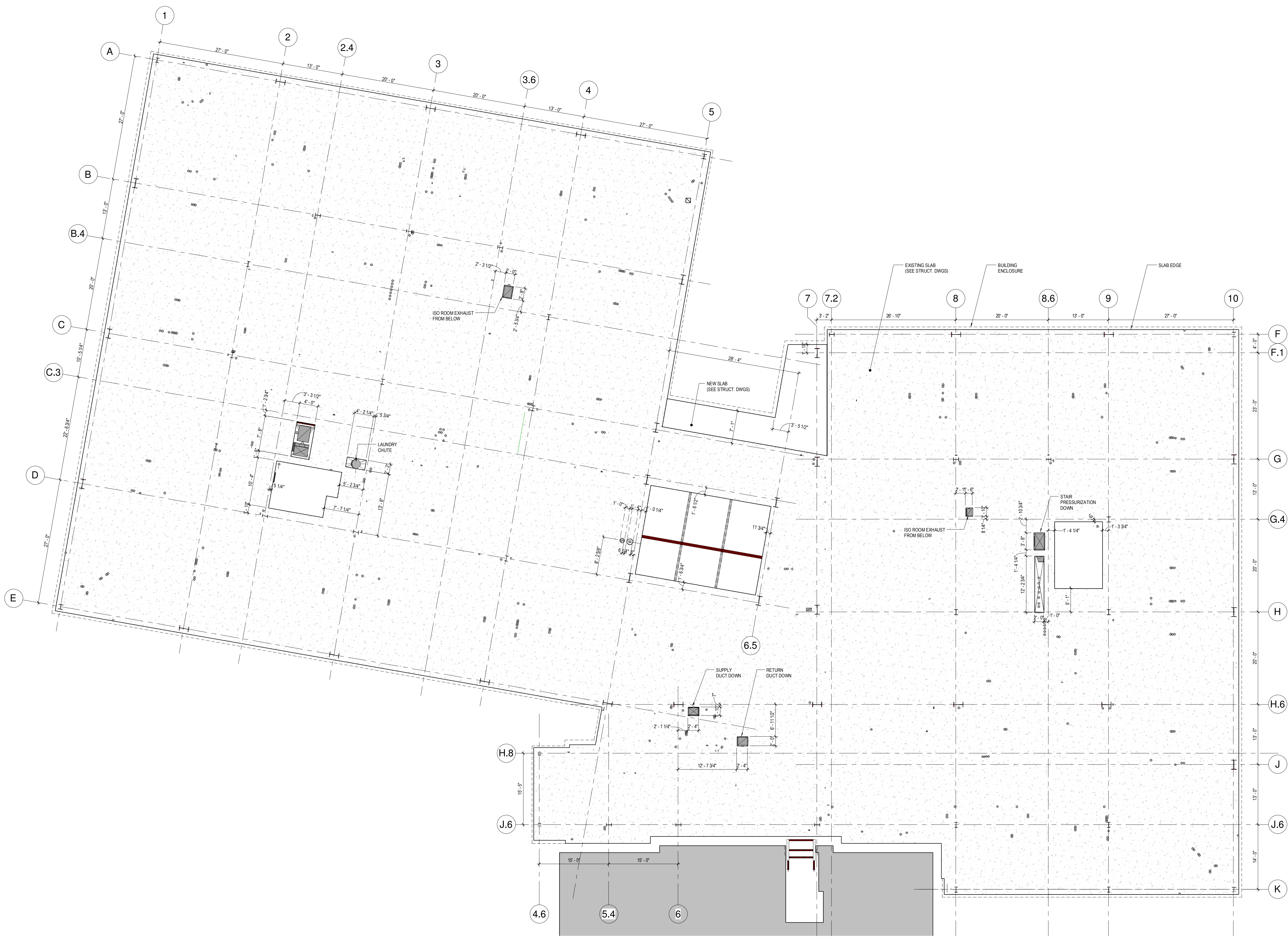
NO	ISSUE	DATE
Job Number	152181.000	
Drawn	TEAM	
Checked		
Approved	JK	

TITLE

**SLAB PLAN -
LEVEL 6**

SHEET NUMBER

A09-06



1 LEVEL 6 SLAB EDGE PLAN
1/8" = 1'-0"

1/26/2018 11:47:23 AM
152181.MDC East Tower 6 & 7 (017)_detailed.rvt