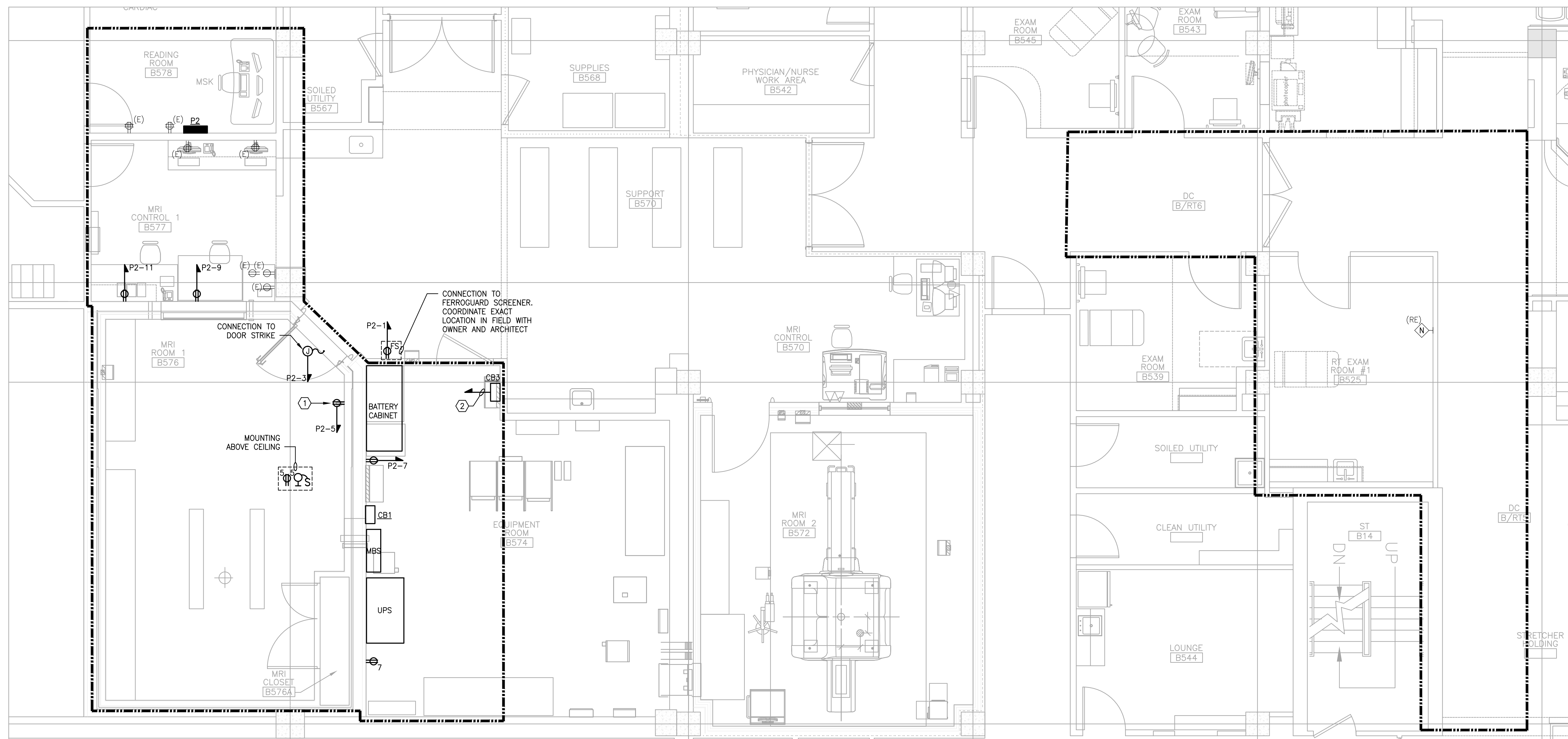


1 DEMOLITION PLAN
SCALE: 1/4"=1'-0"



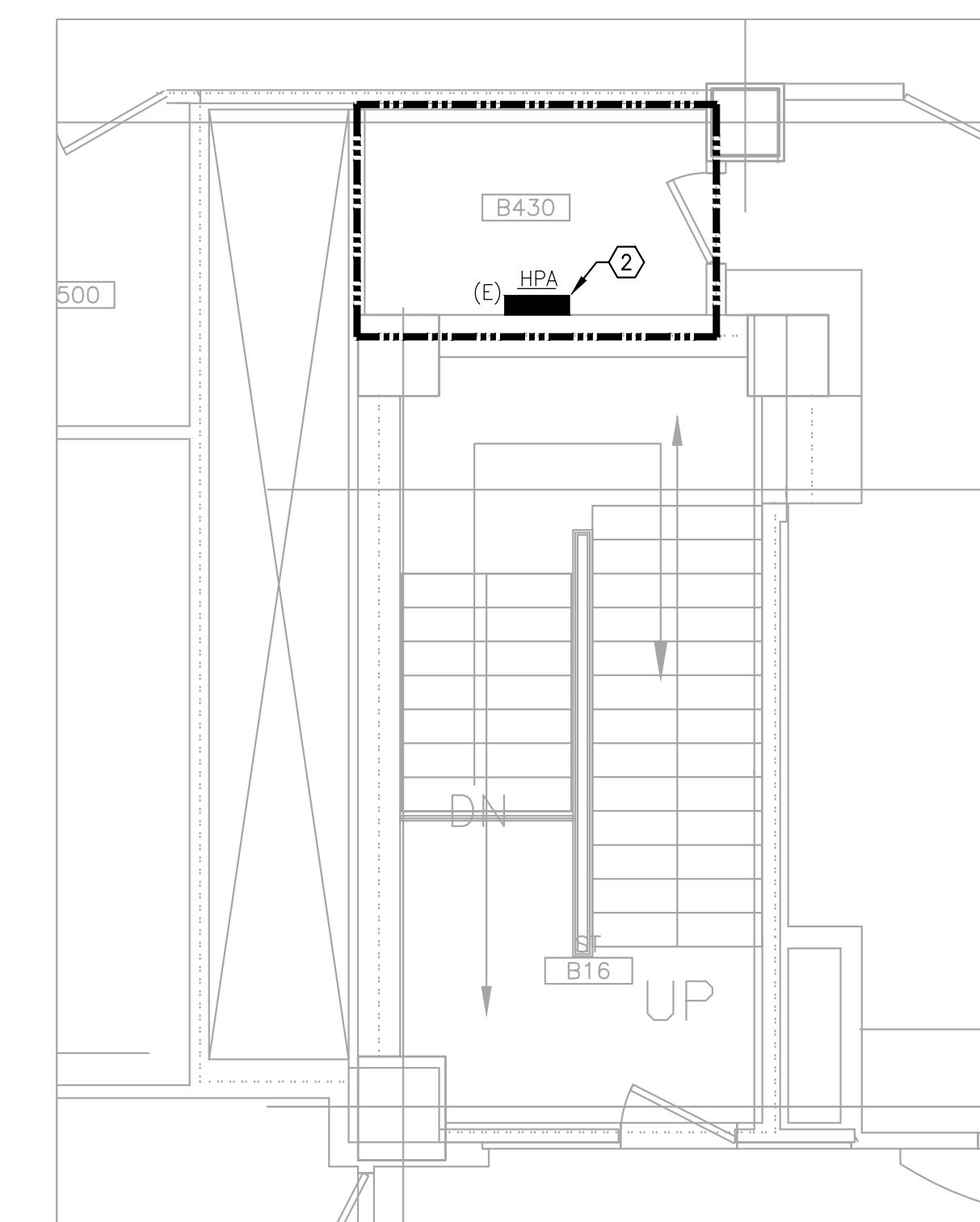
2 POWER PLAN
SCALE: 1/4"=1'-0"

DRAWING NOTES:

- REFER TO DRAWING E.0.0 FOR LEGEND, SYMBOLS, DEMOLITION NOTES, GENERAL NOTES, AND CIRCUIT TRACING NOTE.
- REFER TO ARCHITECTURAL DRAWINGS FOR EXACT LIMIT OF DEMOLITION.
- CONTRACTOR SHALL VERIFY ANY DEVICE AND/OR CIRCUIT IN QUESTION PRIOR TO ANY DEMOLITION.
- ELECTRICAL CONTRACTOR SHALL COORDINATE NEMA RATINGS OF ALL DEVICES PRIOR TO INSTALLATION.
- ELECTRICAL CONTRACTOR SHALL BE RESPONSIBLE FOR COORDINATING AND CONFIRMING LOCATIONS AND MOUNTING HEIGHTS OF ALL ELECTRICAL DEVICES WITH ARCHITECT AND ARCHITECTURAL DRAWINGS.
- CIRCUIT NUMBERS ARE SHOWN FOR DESCRIPTIVE PURPOSES ONLY. EXACT NUMBERS SHALL BE DETERMINED IN FIELD AND SHALL BE NOTED ON THE CONTRACTOR'S AS-BUILT DRAWINGS.
- ELECTRICAL CONTRACTOR SHALL COORDINATE WITH MECHANICAL CONTRACTOR AND PLUMBING CONTRACTOR FOR EXACT LOCATIONS AND QUANTITIES OF EQUIPMENT BEING INSTALLED AND RELOCATED.
- ALL DAMAGED EXISTING RECEPTACLES AND TEL/DATA OUTLETS THAT ARE TO REMAIN SHALL BE REPLACED WITH NEW DEVICES AND FACE PLATES. COORDINATE COLOR WITH ARCHITECT.
- OUTLETS MOUNTED IN THE MILLWORK, ELECTRICAL CONTRACTOR SHALL COORDINATE EXACT LOCATION WITH THE ARCHITECT, RUN CONDUIT IN THE CEILING BELOW AND STUB-UP INTO MILLWORK.
- BRANCH CONDUCTORS SHALL BE SIZED AND INSTALLED FOR A MAXIMUM VOLTAGE DROP OF 3%. ELECTRICAL CONTRACTOR SHALL REFER TO SPECIFICATIONS FOR ADDITIONAL REQUIREMENTS AND OPTIONS.

KEY NOTES:

- CONTRACTOR SHALL PROVIDE NONFERROUS CONSTRUCTION FOR ALL DEVICES WITHIN "MRI ROOM 1 B576" (TYPICAL).
- REPLACE EXISTING 400AF/300AT, 480V, 3-POLE, 35K AIC RATED CIRCUIT BREAKER WITHIN PANEL "HPA" SERVING EXISTING MRI WITHIN MRI ROOM B576 WITH NEW 400AF/350AT, 480V, 3-POLE, 35K AIC RATED CIRCUIT BREAKER FOR NEW PHILIPS MRI. COORDINATE WITH VENDOR SITE SPECIFIC DRAWINGS FOR FEEDER SIZING. PANEL IS LOCATED APPROXIMATELY 275 FEET FROM MRI EQUIPMENT ROOM IN ELECTRIC ROOM B430.

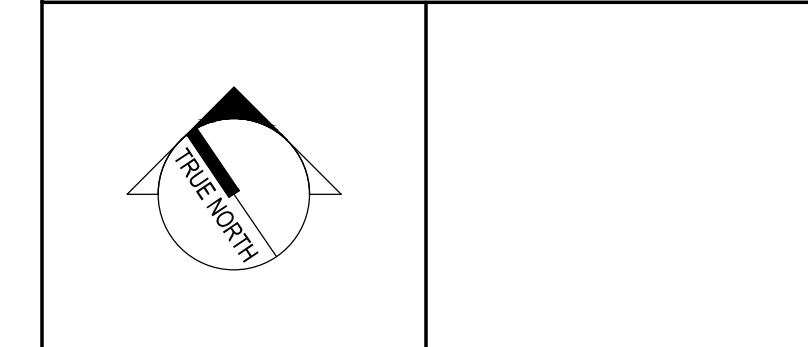


3 EXISTING ELECTRIC ROOM PLAN
SCALE: 1/4"=1'-0"



99 Bedford Street, 2nd Fl.
Boston, MA 02111
T: 617.737.1111 F: 617.737.4311
BRAND: ARCHITECTURE ENGINEERING PLANNING INTERIORS ENERGY
NEW HAVEN / NEW YORK / PHOENIX / RICHMOND / SEATTLE / SALT LAKE CITY
HOUSTON / MIAMI / MINNEAPOLIS / PORTLAND / SAN ANTONIO / TAMPA / WASHINGTON DC
MEMPHIS / NEW YORK / PHOENIX / RICHMOND / SEATTLE / SALT LAKE CITY
HOUSTON / MIAMI / MINNEAPOLIS / PORTLAND / SAN ANTONIO / TAMPA / WASHINGTON DC

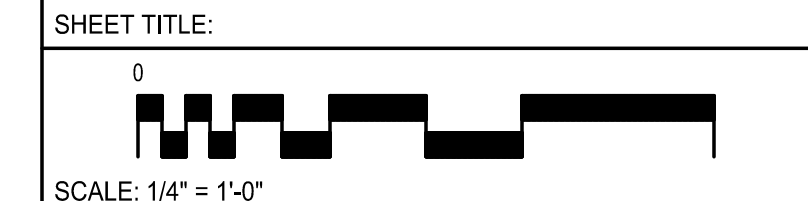
REV	DESCRIPTION	DATE
0	ISSUED FOR CONSTRUCTION	2-27-17
1		
2		
3		
4		
5		
6		
7		
8		
9		
10		



PROJECT NORTH:
SMRT Architects and Engineers
144 Fore Street
Portland, Maine 04104
1.877.700.7678
www.smrtinc.com

**MAINE MEDICAL CENTER
BRAMHALL CAMPUS
MRI #1 REPLACEMENT
PORTLAND, MAINE**

**ELECTRICAL FLOOR PLAN
- POWER DEMO AND NEW**



PROJECT MANAGER:	PROJECT NO: B180143-004
A/E OF RECORD:	
JOB CAPTAIN:	
DRAWN BY: AJR	
SMRT FILE:	

E1.1
SHEET No.

SAVE DATE: 2/27/2017 4:00 PM

PLOT DATE: 2/27/2017 4:01 PM

LOGIN: Roy, Adam

\\mainframe\Projects\B180143-004\Design\Main\CA\Electrical\B180143-004_E1.1.dwg