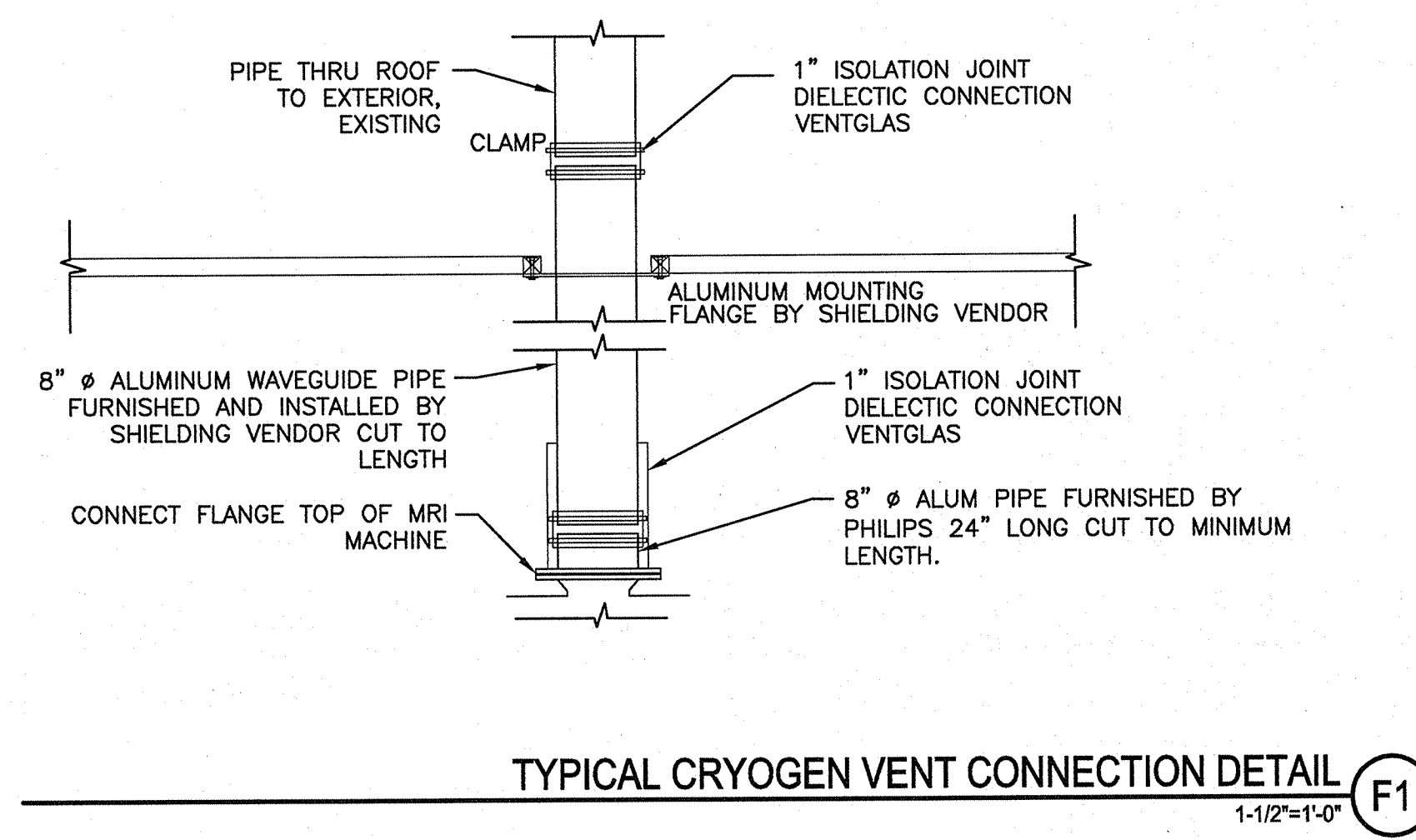
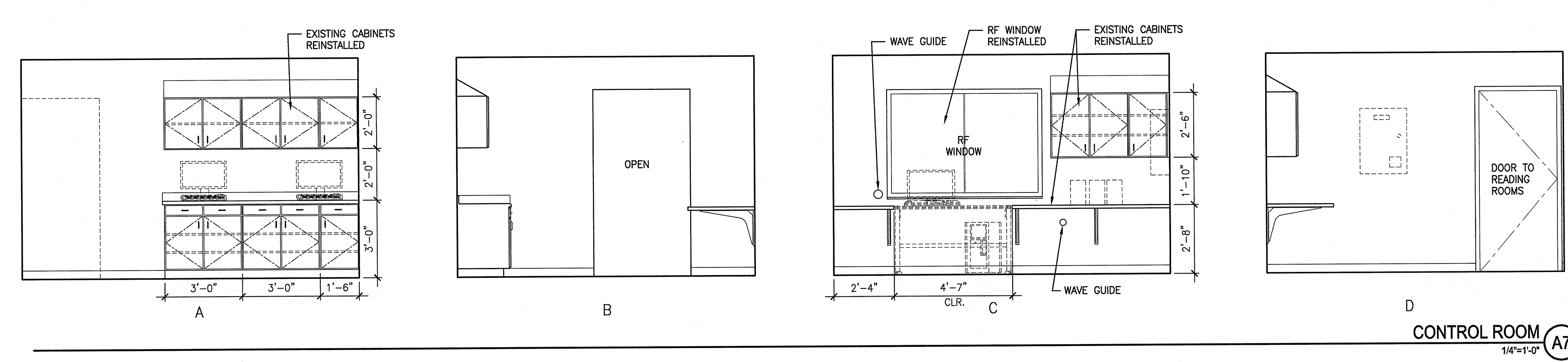
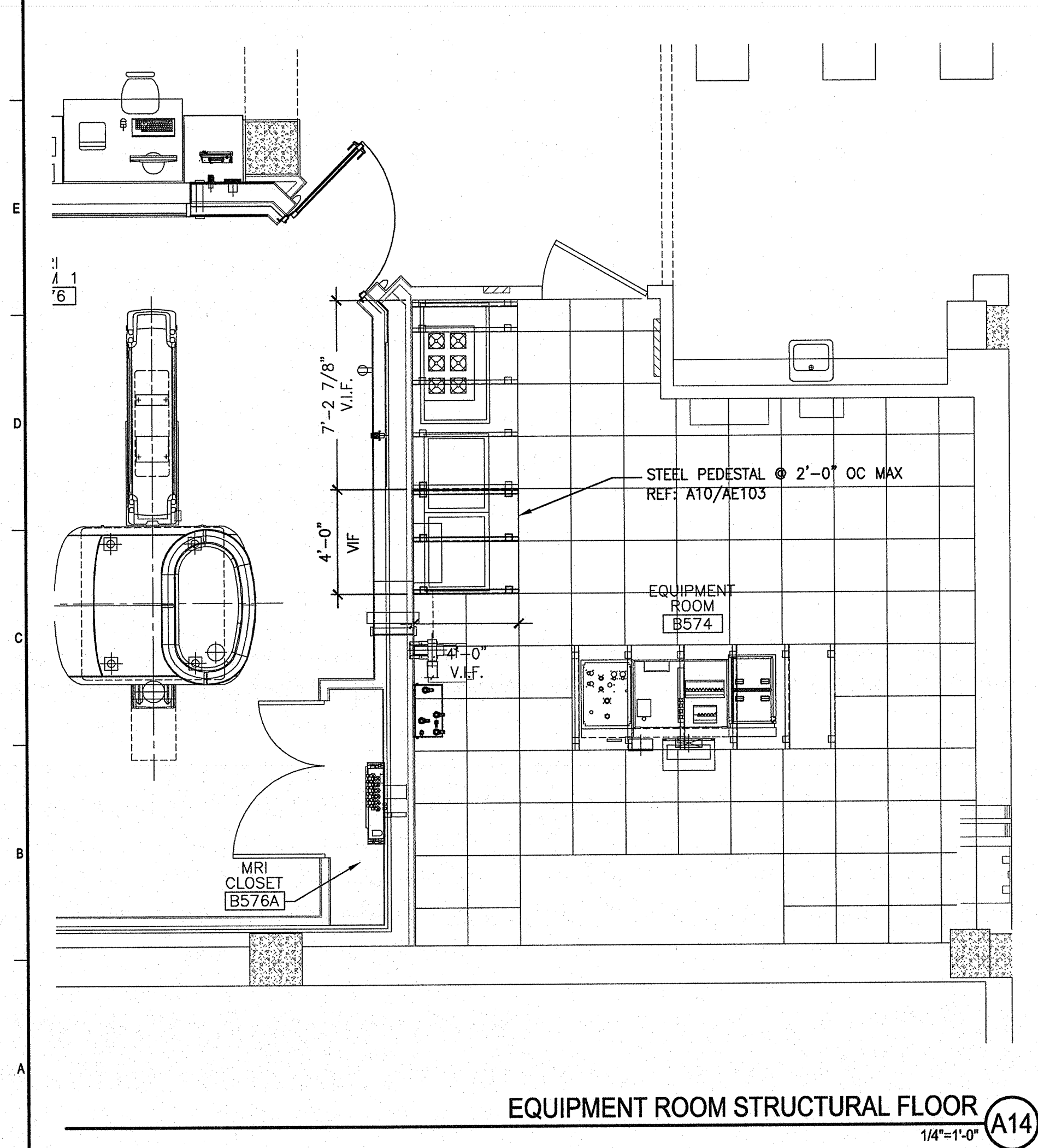


MRI ROOM E8
1/4"=1'-0"

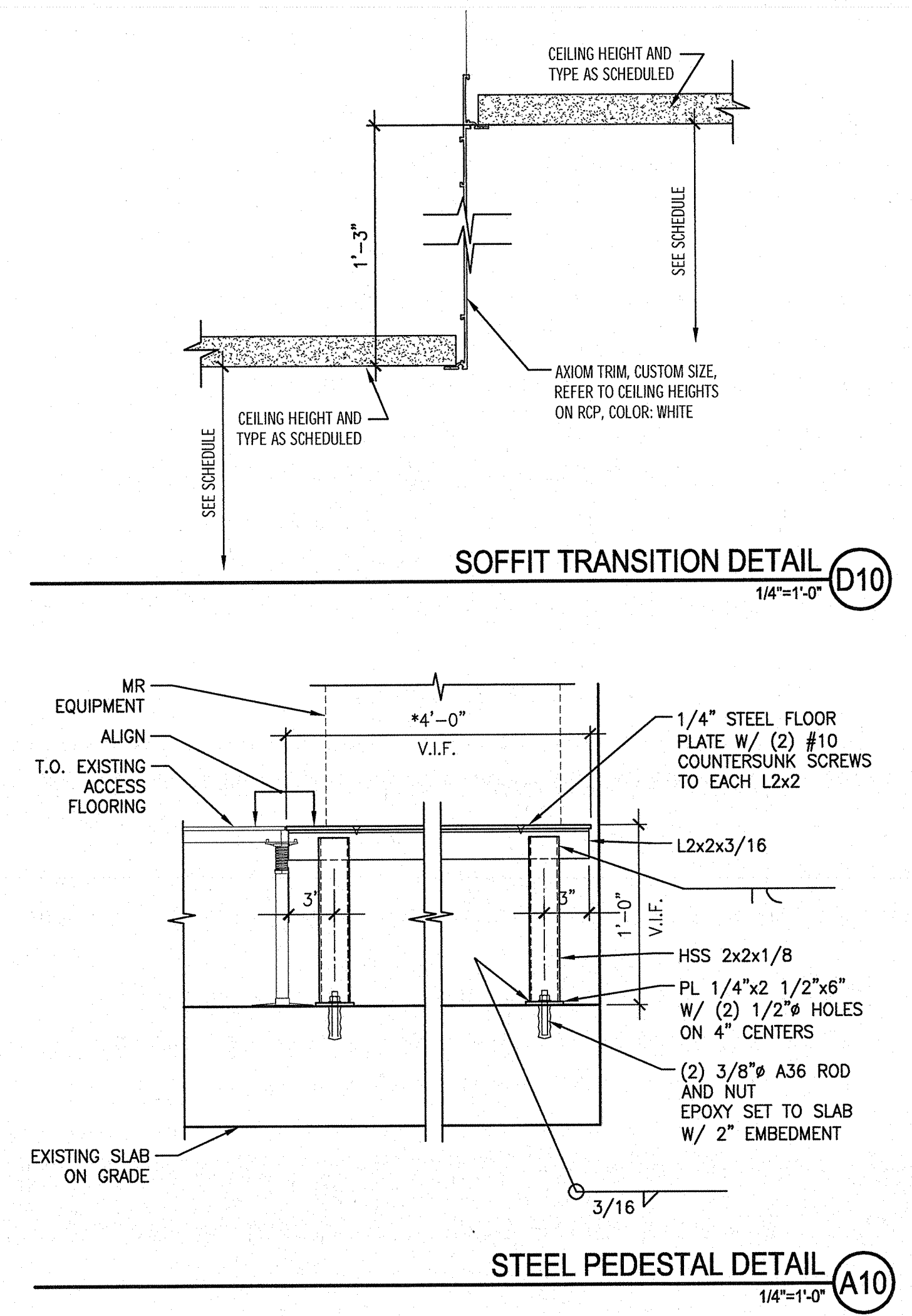


CONTROL ROOM A7
1/4"=1'-0"

TYPICAL CRYOGEN VENT CONNECTION DETAIL F1
1-1/2"=1'-0"

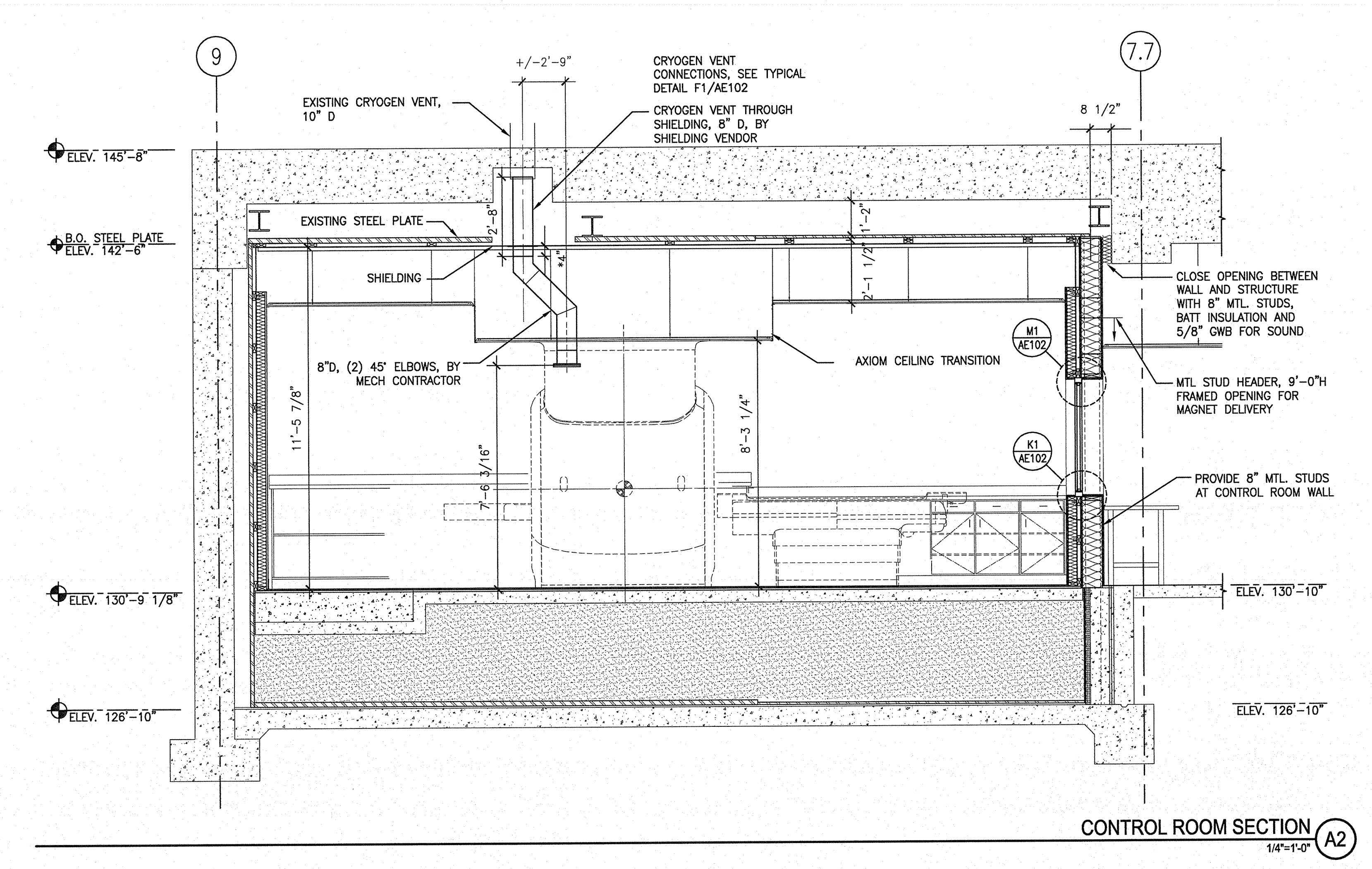


EQUIPMENT ROOM STRUCTURAL FLOOR A14
1/4"=1'-0"



SOFFIT TRANSITION DETAIL D10
1/4"=1'-0"

STEEL PEDESTAL DETAIL A10
1/4"=1'-0"



CONTROL ROOM SECTION A2
1/4"=1'-0"

0	ISSUED FOR CONSTRUCTION	2-27-17
REV	DESCRIPTION	DATE
ISSUED FOR CONSTRUCTION 2-27-17		
CURRENT ISSUE STATUS:		
PROJECT NORTH:		
SMRT Architects and Engineers 144 Fore Street Portland, Maine 04104 1.877.700.7678 www.smrtinc.com		
MAINE MEDICAL CENTER BRAMHALL CAMPUS MRI #1 REPLACEMENT PORTLAND, MAINE		
ELEVATIONS, SECTIONS, AND DETAILS		
SHEET TITLE:		
SCALE: AS NOTED		
PROJECT MANAGER: DJV	PROJECT NO: 16004	
A/E OF RECORD: DJV		
JOB CAPTAIN: MDR		
DRAWN BY: MDR		
SMRT FILE: AE103-16004	SHEET No.	AE103