

CEILING PLAN NOTES:

1. SEE Q101 FOR GENERAL PROJECT NOTES.
2. SEE FINISH SCHEDULE FOR CEILING AND CEILING GRID TYPES.
3. CENTER CEILING GRIDS IN ROOMS. USE HALF TILES OR GREATER @ PERIMETERS WHEN POSSIBLE U.N.O.
4. ALIGN CEILING ITEMS AS SHOWN, WITH COMMON CENTERLINES TYPICALLY. CENTER ITEMS IN CEILING, OR IN AREAS U.N.O.
5. WHERE REGULAR OR BEVELED TILE IS USED, PAINT ALL CUT EDGES TO MATCH.
6. CAULK JOINT BETWEEN CEILING GRID (WALL ANGLE) AND WALL WHERE GAPS ARE LARGER THAN 1/8" OR GREATER.
7. PROVIDE ACCESS PANELS IN GWB CEILINGS AS REQUIRED BY ALL TRADES.
8. FIRE SPRINKLERS SHALL BE CENTERED IN CEILING TILE OR HALF TILE AS SHOWN. FIRE SPRINKLERS SHALL BE LOCATED IN ALIGNMENT WITH OTHER CEILING ITEMS AND SHALL BE PLACED IN COORDINATION WITH LIGHT FIXTURE POSITIONS INDICATED, TYPICAL.
9. FIRE SPRINKLERS ARE SHOWN FOR COORDINATION PURPOSES ONLY. ADDITIONAL SPRINKLER HEADS MAY BE REQUIRED FOR CODE COMPLIANCE, AS DETERMINED BY THE FIRE PROTECTION DESIGNER. FIRE PROTECTION CONTRACTOR SHALL BE RESPONSIBLE FOR PROVIDING A COMPLETE AND FULLY CODE COMPLIANT SYSTEM, INCLUDING HEADS NOT INDICATED IN THIS DRAWING. SIDEWALL MOUNT SPRINKLER HEADS UNDER BALCONIES ARE NOT SHOWN IN THE CEILING PLANS.
10. SEE MECHANICAL, ELECTRICAL, AND PLUMBING DRAWINGS FOR ADDITIONAL INFORMATION.
11. WHERE ARCHITECTURAL DRAWINGS DEPICT MECHANICAL OR ELECTRICAL ITEMS/EQUIPMENT, INSTALLATION SHALL BE COORDINATED WITH EACH RESPECTIVE TRADE SUB-CONTRACTOR.
12. WHERE DRAWINGS DO NOT ACCESS INSTALLATION METHODOLOGY, THE CONTRACTOR SHALL BE BOUND TO PERFORM IN STRICT COMPLIANCE WITH THE MANUFACTURER'S SPECIFICATIONS AND INDUSTRY STANDARDS.

CEILING PLAN KEYED NOTES:

- 1 EXISTING CEILING AND FIXTURES TO REMAIN. COORDINATE ELECTRICAL AND MECHANICAL WORK, REMOVE AND REINSTALL AS REQUIRED.
- 2 CONNECT EXISTING CRYOGEN VENT TO NEW PHILIPS CONNECTION. COORDINATE WITH MECHANICAL DRAWINGS.
- 3 RELOCATED OR SHIFT DIFFUSER OR LIGHT FIXTURE
- 4 REMOVABLE SECTION OF GRID TO ALLOW ACCESS TO TOP OF MRI
- 5 PROVIDE PLASTIC DRIP PAN UNDER CRYOGEN VENT PIPE VERTICAL, ABOVE CEILING. COORDINATE WITH PHILIPS EQUIPMENT.
- 6 BUILD BACK SOFFIT TO ORIGINAL EXISTING SIZE, HEIGHT AND MATERIALS.

REFLECTED CEILING PLAN (A10)
1/4"=1'-0"

REV	DESCRIPTION	DATE
0	ISSUED FOR CONSTRUCTION	2-27-17

ISSUED FOR CONSTRUCTION
2-27-17

CURRENT ISSUE STATUS:

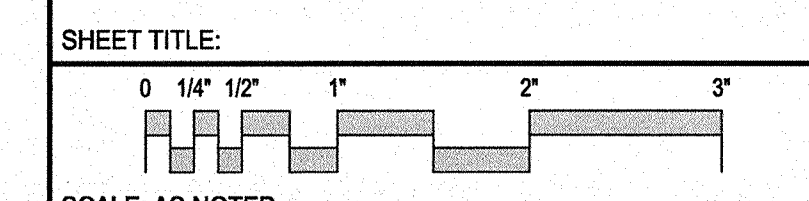
PROJECT NORTH

2-27-17

PROJECT NORTH:
SMRT Architects and Engineers
144 Fore Street
Portland, Maine 04104
1.877.700.7678
www.smrtinc.com

MAINE MEDICAL CENTER
BRAMHALL CAMPUS
MRI #1 REPLACEMENT
PORTLAND, MAINE

REFLECTED CEILING PLAN



SCALE: AS NOTED

PROJECT MANAGER:	DJV	PROJECT NO.:	16004
A/E OF RECORD:	DJV		
JOB CAPTAIN:	MDR		
DRAWN BY:	MDR		
SMRT FILE:	AE102-16004	SHEET NO.:	AE102