

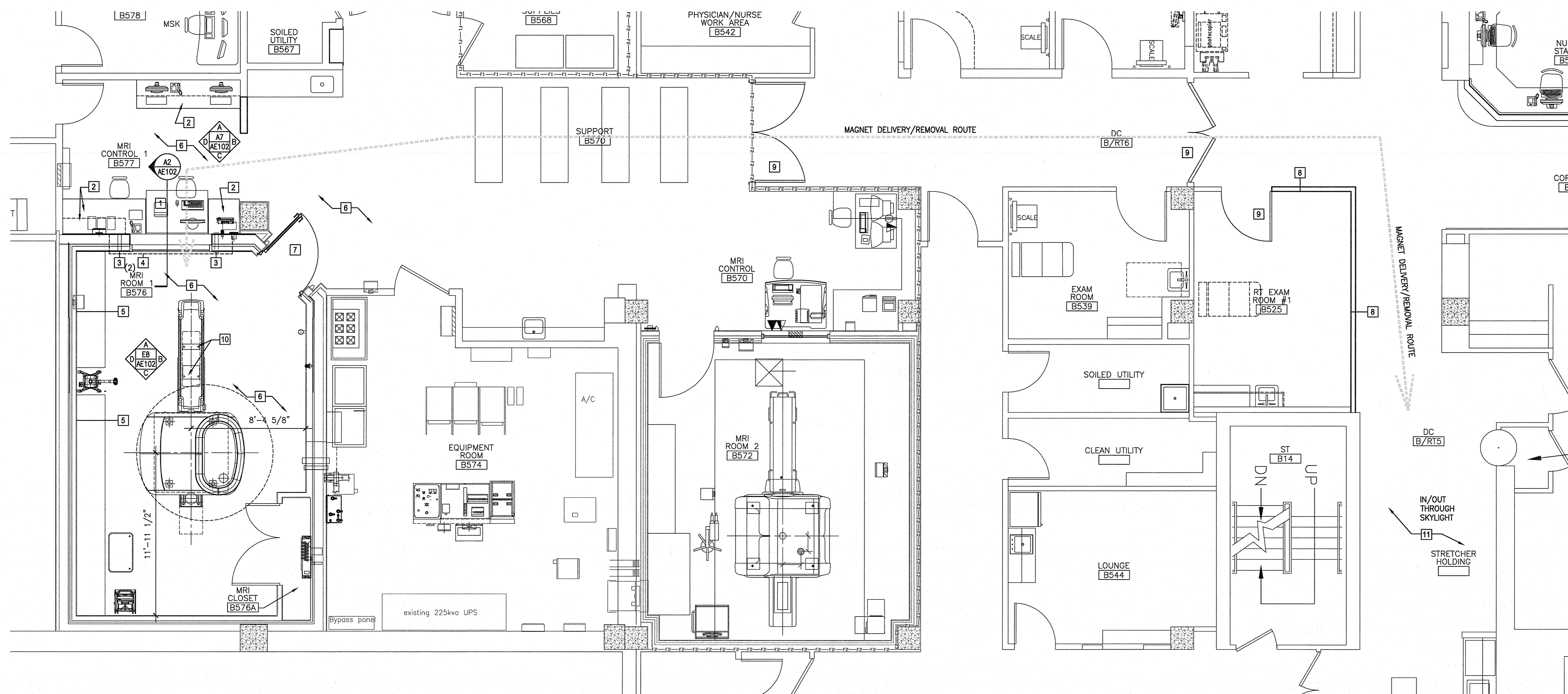
DEMOLITION PLAN
1/4"=1'-0" H5

DEMOLITION NOTES:

1. COORDINATE EXTENT OF DEMOLITION DESCRIBED WITH THE REQUIREMENTS OF OTHER WORK DESCRIBED IN THE CONSTRUCTION DOCUMENTS AND THE CONTRACTORS SUBMITTALS, AND WITH LOCATIONS OF EXISTING FINISHES TO REMAIN.
2. THE CONTRACTOR SHALL PROTECT FROM DAMAGE, ALL EXISTING OR NEW FINISHES, MATERIALS AND EQUIPMENT, WHICH ARE NOT DESCRIBED AS BEING REMOVED OR DEMOLISHED.
3. THE CONTRACTOR SHALL BE RESPONSIBLE TO REPLACE ALL EXISTING OR NEW FINISHES, MATERIALS AND EQUIPMENT, DAMAGED BY ANY WORK REQUIRED BY AND ASSOCIATED WITH THE CONSTRUCTION DOCUMENTS, WHICH IS NOT DESCRIBED AS BEING REMOVED OR DEMOLISHED.
4. REFER TO ELECTRICAL PLANS FOR ELECTRICAL AND LIGHTING SYSTEMS REMOVALS.
5. REFER TO MECHANICAL PLANS FOR MECHANICAL SYSTEMS REMOVALS.
6. TEMPORARILY REMOVE EXISTING CEILING SYSTEMS TO REMAIN AS REQUIRED FOR INSTALLATIONS AND REMOVALS OF MECHANICAL, ELECTRICAL AND PLUMBING SYSTEMS. RE-INSTALL CEILING SYSTEMS IN ORIGINAL LOCATION AND CONDITION WHEN WORK IS COMPLETE.
7. REMOVE EXISTING WALL MOUNTED ACCESSORIES AT LOCATIONS WHERE WALLS ARE DEMOLISHED. TAKE CARE DURING REMOVAL AND COORDINATE WITH OWNER FOR ITEMS TO BE SALVAGED.

DEMOLITION KEYED NOTES:

- 1 REMOVE PORTION OF SOFFIT TO ALLOW FOR REMOVAL AND DELIVERY OF MR GANTRY. COORDINATE EXTENT WITH PHILIPS DRAWINGS
- 2 REMOVE EXISTING CASEWORK COMPLETE. SALVAGE FOR REUSE.
- 3 REMOVE EXISTING FURNITURE/MR EQUIPMENT COMPLETE. SALVAGE AND RETURN TO OWNER.
- 4 REMOVE EXISTING CEILING GRID COMPLETE.
- 5 REMOVE EXISTING FLOORING SYSTEM COMPLETE.
- 6 REMOVE SECTIONS OF RAISE FLOOR TO ALLOW FOR INSTALLATION OF STRUCTURAL PEDESTAL FOR UPS SYSTEM.
- 7 REMOVE EXISTING PARTITION COMPLETE.
- 8 REMOVE EXISTING WINDOW AND FRAME COMPLETE.
- 9 REMOVE PORTION OF EXISTING CEILING TO ALLOW FOR CONSTRUCTION OF SOFFIT.
- 10 REMOVE EXISTING SHIELDED DOOR, PREPARE OPENING FOR REVERSED SWING.
- 11 REMOVE EXISTING DOOR FOR MRI DELIVERY.
- 12 REMOVE EXISTING WALLDOOR TO OFFICE FOR MRI DELIVERY.
- 13 REMOVE EXISTING SKYLIGHT FOR MRI DELIVERY.



FLOOR PLAN
1/4"=1'-0" A6

FLOOR PLAN NOTES:

1. SEE G1001 FOR GENERAL PROJECT NOTES, LEGENDS, AND ABBREVIATIONS.
2. SEE G1002 FOR GENERAL MOUNTING HEIGHTS, TOP OF WALL DETAILS, AND PARTITION TYPES.
3. CONTRACTOR IS RESPONSIBLE FOR REVIEWING CODE COMPLIANCE PLANS AND NOTIFYING THE ARCHITECT OF CONFLICTS BETWEEN WHAT IS IN THE FIELD AND ON THE CODE DOCUMENTS.
4. DIMENSIONS ARE FACE OF CONCRETE, FACE OF MASONRY AND CENTERLINE OF STUD, UNLESS NOTED OTHERWISE.
5. DOOR JAMBS (HINGE SIDE) SHALL BE 6" FROM CORNER IN STUD PARTITIONS AND 8" FROM CORNER IN MASONRY PARTITIONS UNLESS NOTED OTHERWISE.
6. REFER TO DETAILS FOR ADDITIONAL DIMENSIONING INFORMATION.
7. REFER TO ENLARGED PLANS FOR PARTITION TYPES AND DIMENSIONS IN AREAS WHICH ARE DETAILED AT A LARGER SCALE.
8. FURNITURE AND OWNER PROVIDED EQUIPMENT ARE INDICATED BY DASHED LINETYPE.
9. CONTRACTOR IS RESPONSIBLE FOR THE COORDINATION OF OWNER PROVIDED EQUIPMENT INCLUDING BUT NOT LIMITED TO DIMENSIONAL INFORMATION, AND MECHANICAL, ELECTRICAL, AND PLUMBING REQUIREMENTS.

FLOOR PLAN KEYED NOTES:

- 1) OWNER PROVIDED FURNITURE, COORDINATE FINAL LAYOUT AND INFRASTRUCTURE REQUIREMENTS WITH OWNERS FURNITURE VENDOR.
- 2) EXISTING CASEWORK TO BE REMOVED AND REINSTALLED.
- 3) 4" DIAMETER WAVE GUIDE.
- 4) PROVIDE 9'-0"x9'-0" MIN. CLEAR OPENING FOR REMOVAL AND DELIVERY OF MRI EQUIPMENT. RECONSTRUCT TO MATCH REMOVED. SEE A2/AE102 FOR MORE INFORMATION ON EXISTING CONSTRUCTION.
- 5) EXISTING CASEWORK TO REMAIN, PROTECT DURING CONSTRUCTION.
- 6) PROTECT EXISTING FLOOR DURING CONSTRUCTION ACTIVITY.
- 7) NEW OR REUSED 4'-0"x7'-0" RF SHIELDED DOOR, REUSE OR MATCH EXISTING HARDWARE.
- 8) RECONSTRUCTION WALL IN EXACT LOCATION, MATCHING PREVIOUS FINISHES, AND WALL ASSEMBLY.
- 9) REINSTALL EXISTING REMOVED DOORS AND HARDWARE IN EXISTING DOOR FRAMES.
- 10) PROVIDE HILTI, REDHEAD OR EQUAL, THREADED MOUNTING HOLES. (4) M10 AS NOTED ON PHILIPS DRAWINGS SD101, S2 KEYED NOTES) WITH PULL FORCE NOTED.
- 11) REINSTALL SKYLIGHT AFTER FINAL MRI INSTALLATION. PROVIDE TEMPORARY WEATHER TIGHT COVER BETWEEN REMOVAL AND INSTALLATION OF FINAL MR UNIT. DURING REINSTALLATION OF SKYLIGHT, REPLACE ANY WEATHER STRIPPING/GASKETING DAMAGED DURING REMOVAL. INSPECT ALL COMPONENTS OF EXISTING SKYLIGHT. INFORM OWNER AND ARCHITECT OF ANY DAMAGE OR WORN OUT PART PRIOR TO REINSTALLATION.

REV	DESCRIPTION	DATE
0	ISSUED FOR CONSTRUCTION	2-27-17

ISSUED FOR CONSTRUCTION
2-27-17

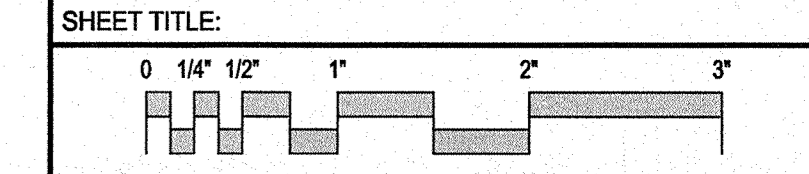
CURRENT ISSUE STATUS:

PROJECT NORTH:

SMRT Architects and Engineers
144 Fore Street
Portland, Maine 04104
1.877.700.7678
www.smrtinc.com

MAINE MEDICAL CENTER
BRAMHALL CAMPUS
MRI #1 REPLACEMENT
PORTLAND, MAINE

DEMOLITION, FLOOR AND
REFLECTED CEILING PLAN



SCALE: AS NOTED

PROJECT MANAGER: DJV PROJECT NO: 18004
A/E OF RECORD: DJV
JOB CAPTAIN: MDR
DRAWN BY: MDR
SMRT FILE: AE101-18004 SHEET No. AE101