

ARCHITECTURAL ABBREVIATIONS

Table of architectural abbreviations including AIR CONDITIONING, ANCHOR BOLT, ACCESS, ACT, AREA DRAIN, ADHESIVE, etc.

ARCHITECTURAL SYMBOLS

Table of architectural symbols including NEW PARTITION, EXISTING PARTITION, PARTITION TO BE DEMOLISHED, etc.

MATERIAL LEGEND

Table of material legend including TOPSOIL, ROOF BALLAST, CRUSHED GRAVEL, CONCRETE, etc.

ELECTRICAL & MED GAS SYMBOLS

Table of electrical and medical gas symbols including PLAN VIEW (WALL CLOCK, TELEVISION OUTLET, etc.) and ELEVATION (TV, CODE BUTTON, etc.).

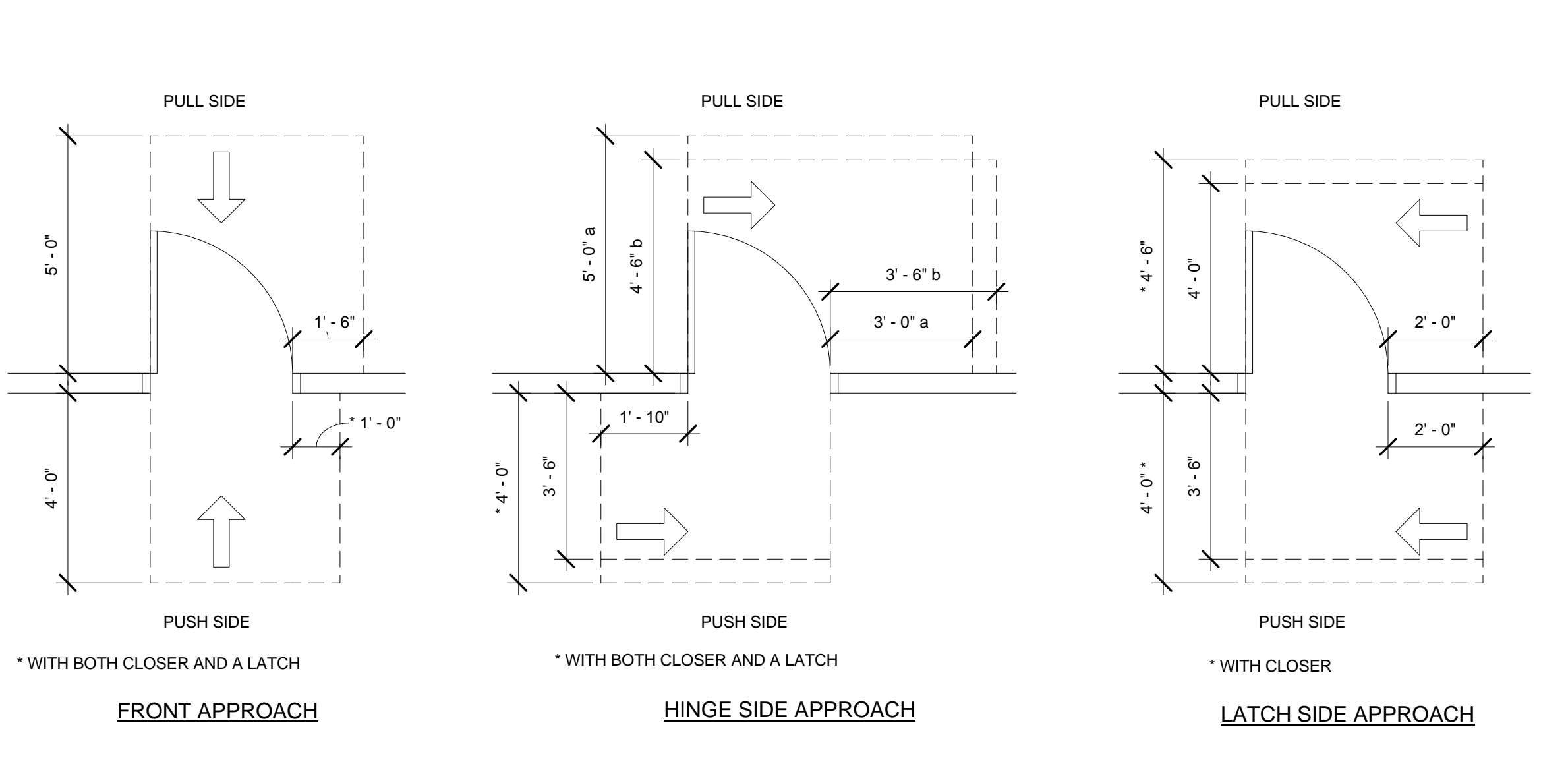
MODULAR CASEWORK

Modular casework details including GENERAL NOTES (PENCIL DRAWERS, CABINET DEPTHS), WALL CABINETS, BASE CABINETS, and TALL CABINET diagrams.

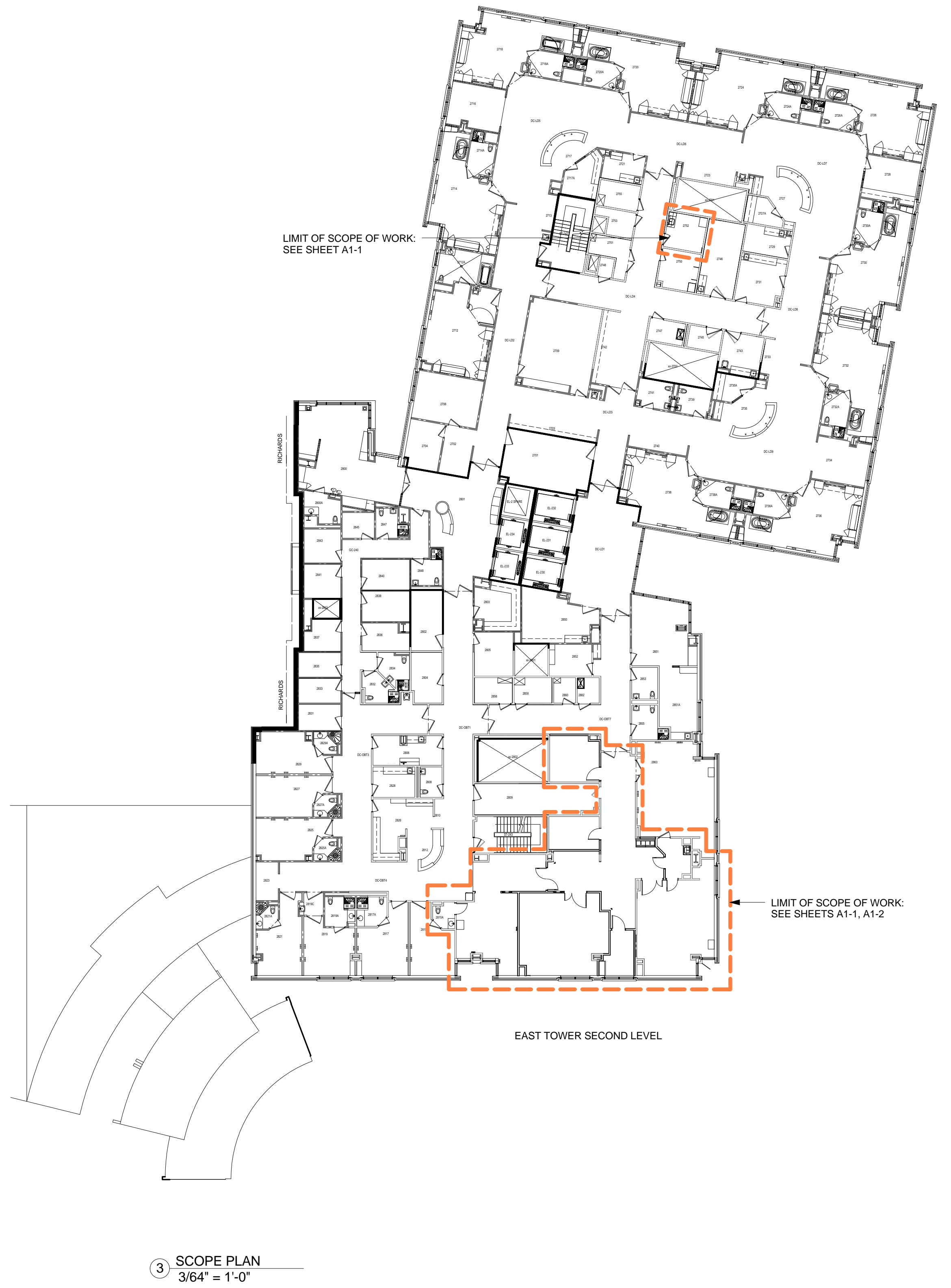
ACCESSORIES

Table of accessories including DISPENSERS (SD1, SD2, PD1), MIRRORS (MR1), and MISCELLANEOUS (MA1).

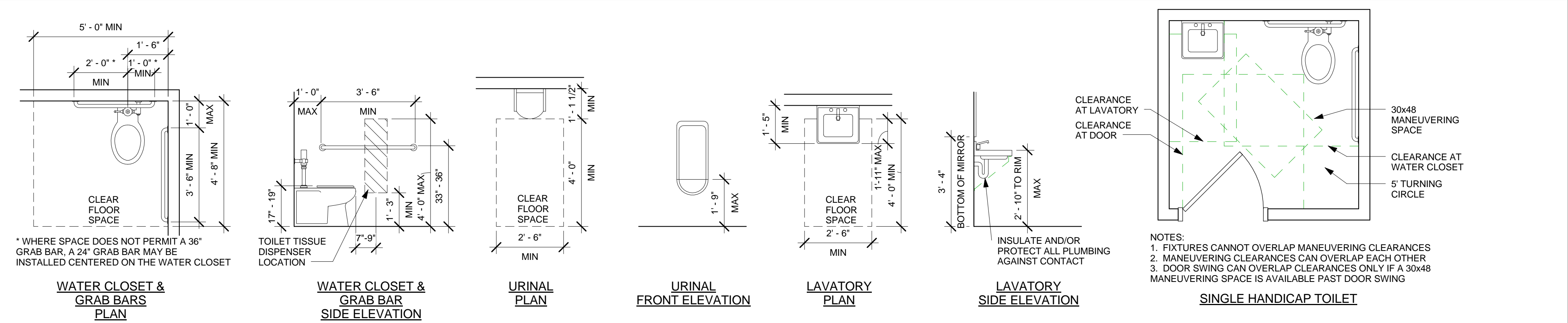
MANEUVERING CLEARANCES FOR DOORS



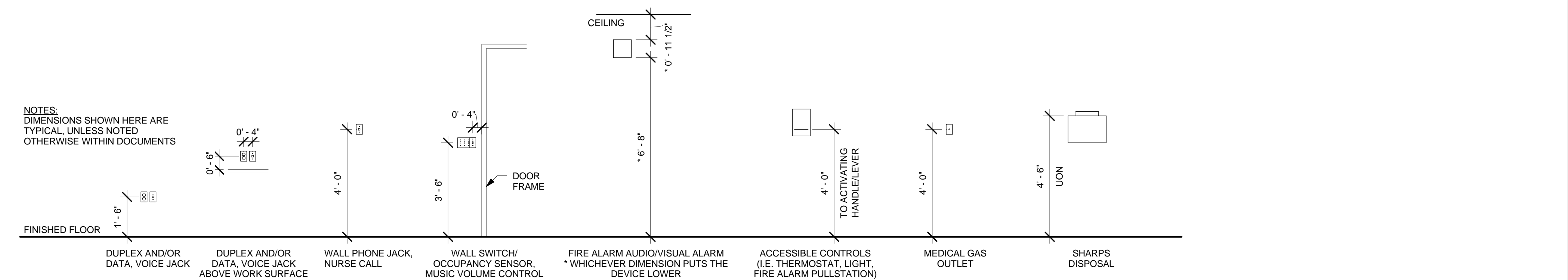
KEY PLAN



FIXTURES MOUNTING HEIGHTS & CLEARANCES

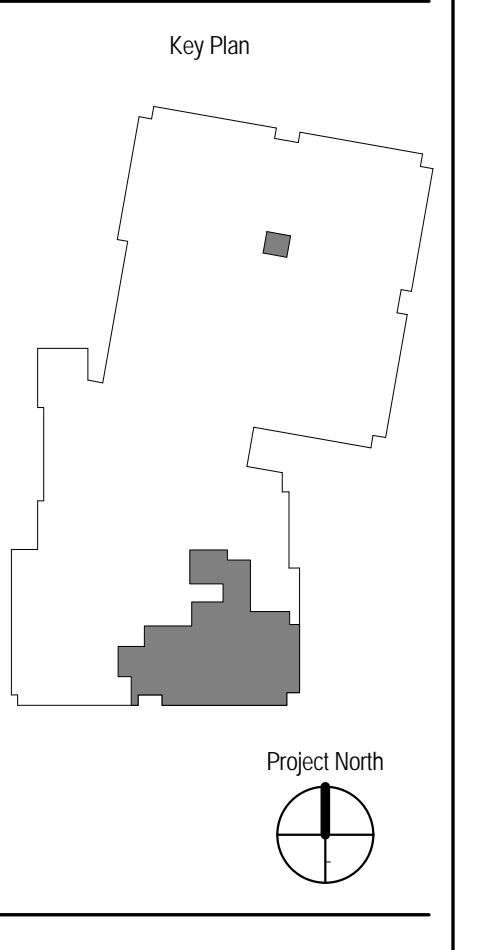


TYPICAL MOUNTING HEIGHTS



e4n ARCHITECTURE logo and contact information for Boston, Dallas, and New York.

FITZMEYER & TOCCI logo and contact information for Worcester, MA.



Maine Medical Center EAST TOWER LEVEL 2 OR RENOVATION 22 Bramhall Street, Portland, ME

Revision table with columns for REV, DESCRIPTION, and DATE.

Professional seal of Charles J. Bizzell, State of Maine, and AG ARCHITECTURAL ABBREVIATIONS, SYMBOLS, TYPICAL MOUNTING HEIGHTS.