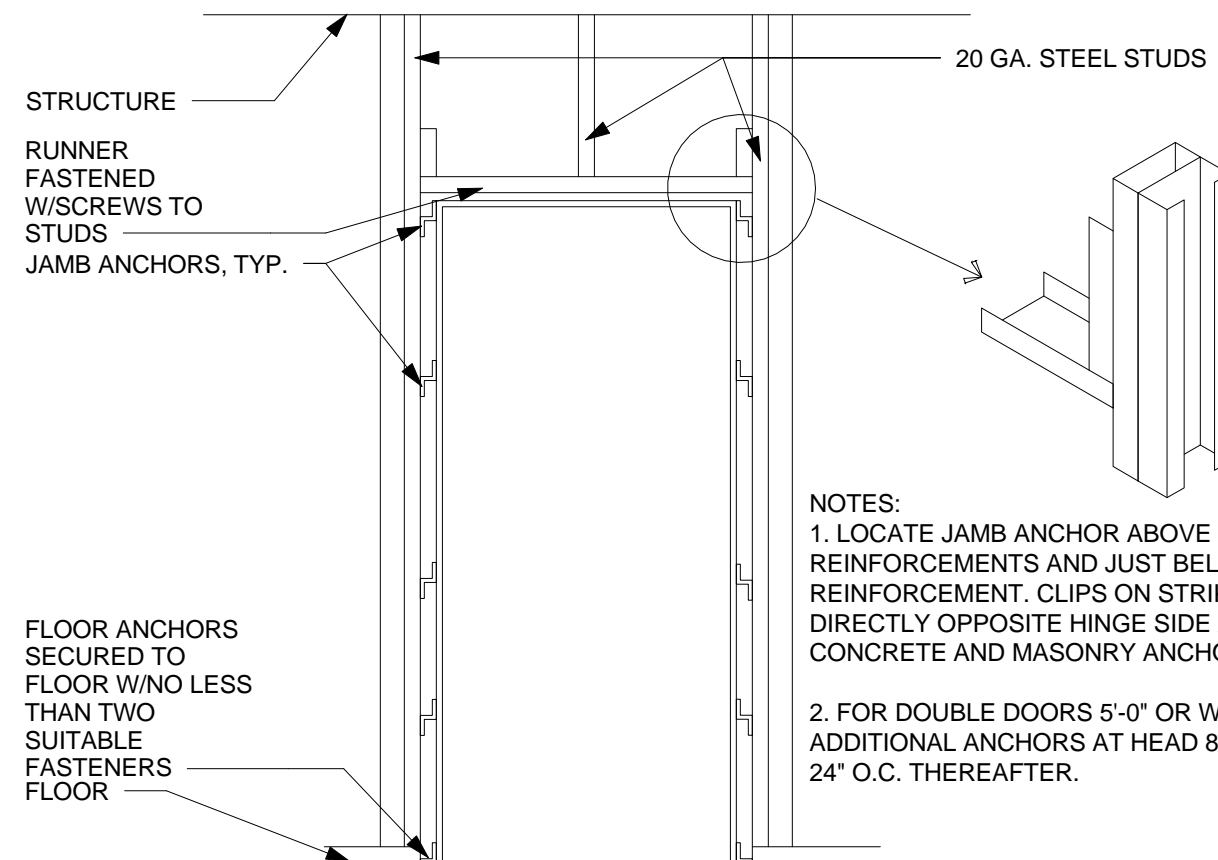


DOOR SCHEDULE												
MARK	HEIGHT	WIDTH	DOOR		FRAME		GLAZING	HARDWARE GROUP	FIRE RATING		COMMENTS	
			MATERIAL	TYPE	MATERIAL	TYPE						
200	7'-0"	3'-0"	WD	F	HM	1						
202	7'-0"	6'-0"	WD	HG	HM	1					LATCH DOOR	
203	7'-0"	3'-6"	WD	F	HM	1		45 MIN			CARD READER	
204A	7'-0"	5'-8"	WD	F	HM	1					RELOCATED EXISTING DOOR	
204B	7'-0"	3'-0"	WD	NL1	HM	1					RELOCATED EXISTING DOOR	
205	7'-0"	3'-0"	WD	NL1	HM	1					RELOCATED EXISTING DOOR	
206	7'-0"	3'-6"	WD	F	HM	1		45 MIN			CARD READER	
207	7'-0"	3'-0"	WD	F	HM	1		45 MIN			CARD READER	
209	7'-0"	6'-0"	WD	NL1	HM	1					AUTOMATIC DOOR WITH PUSH PLATE BOTH SIDES, RELOCATED EXISTING DOOR	

GENERAL NOTES

- ALL DOORS MUST OPEN TO A FULL 90° (OR 180° WHERE INDICATED).
- MAINTAIN A 4" MINIMUM CLEARANCE (UNLESS OTHERWISE SHOWN IN PLAN) BETWEEN DOOR JAMB AND ADJACENT PARTITION.
- MAINTAIN CONTINUITY OF SMOKE AND RATED PARTITIONS AT FRAMES.
- CONTRACTOR TO COORDINATE DOOR VISION PANEL CUT-OUT w/HARDWARE CUTOUTS.
- REFER TO SPECIFICATIONS FOR HARDWARE SET TYPES.
- ALL RATED DOORS AND SMOKE DOORS SHALL BE POSITIVE LATCHING.
- MANUFACTURER'S INSTALLATION INSTRUCTIONS SHALL BE AVAILABLE ON THE JOB SITE FOR ALL RATED DOOR ASSEMBLIES.
- HAND ACTIVATED DOOR OPENING HARDWARE SHALL BE CENTERED BETWEEN 30 INCHES AND 44 INCHES ABOVE THE FLOOR.
- FIELD VERIFY EXISTING WALL FOR THROAT DIMENSION OF FRAME WHERE A NEW DOOR IS INSTALLED IN AN EXISTING WALL. ALSO, FIELD VERIFY DIMENSIONS WHERE A NEW WALL IS TO ALIGN WITH THE EXISTING WALL.

TYPICAL FRAME ELEVATION/DETAIL

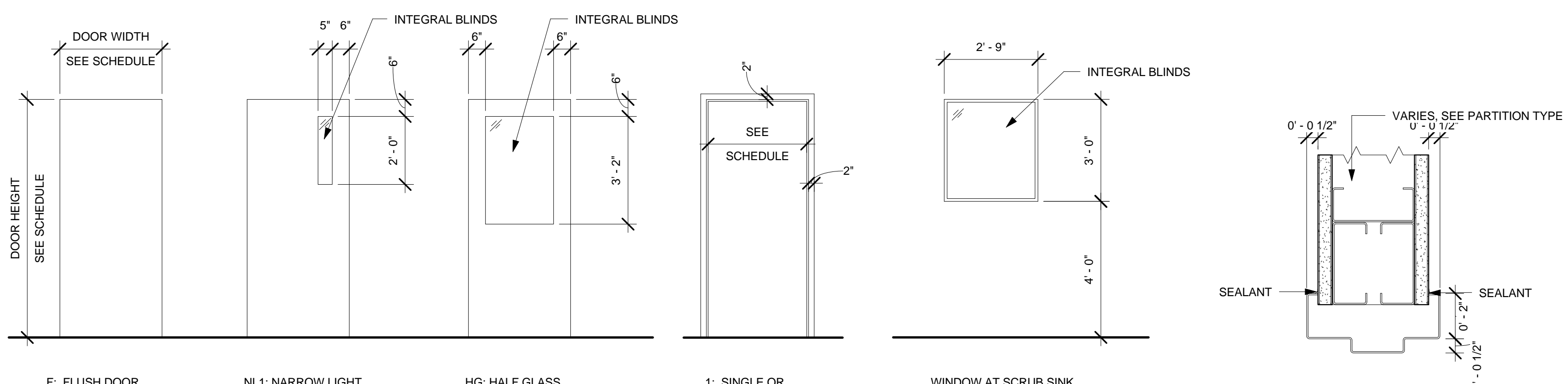
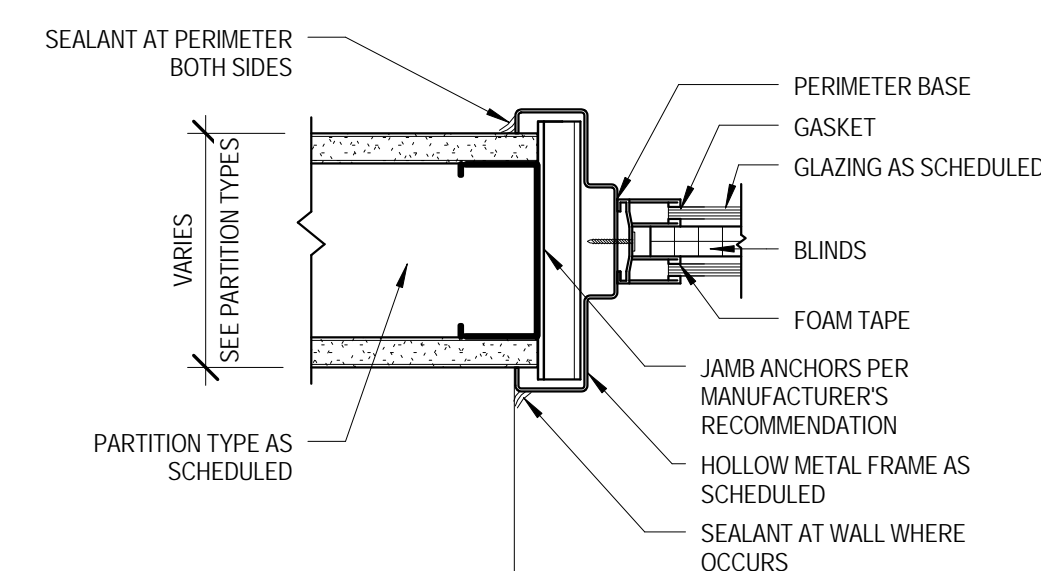
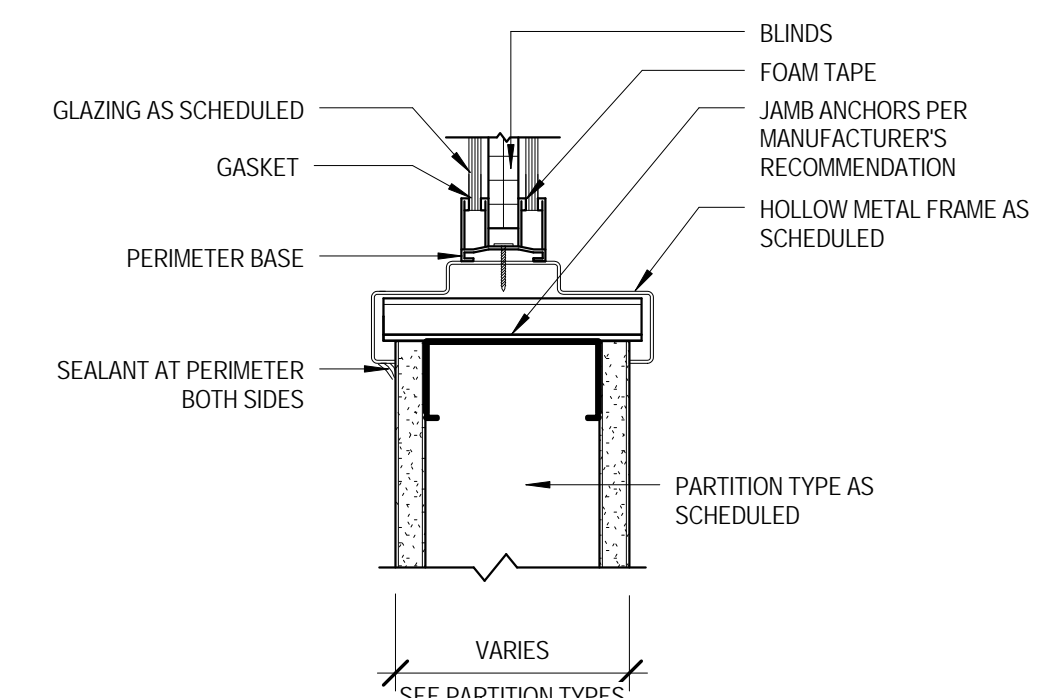
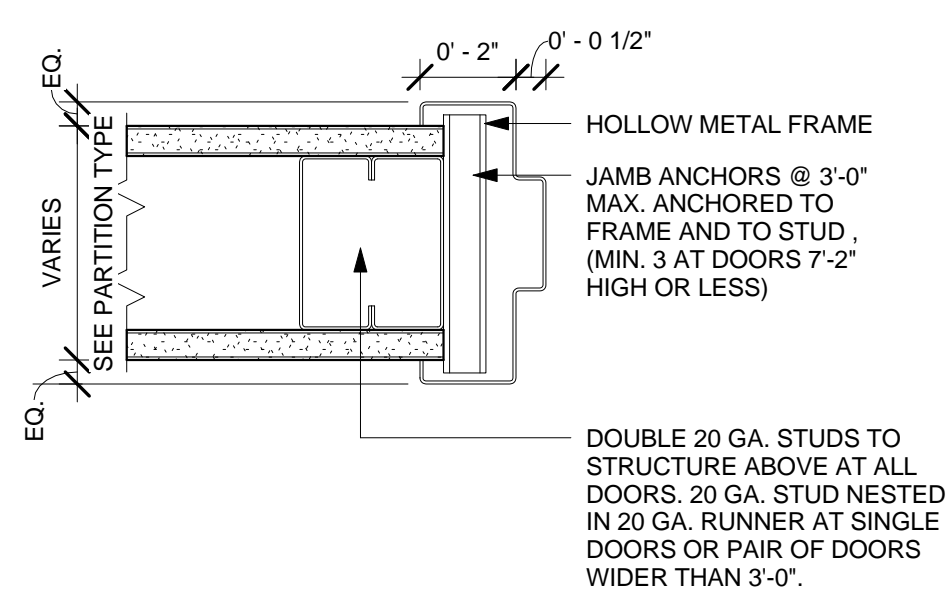


PUSH PLATE: 45° TO CENTERLINE
 DOOR PULL: 42° TO CENTERLINE
 EXIT DEVICE: 41° TO CENTERLINE OF TOUCH BAR
 KNOBS AND LEVERS: 38" TO 42" TO CENTERLINE OF DEVICE
 HOSPITAL LATCHSET: 45 3/4" TO CENTERLINE OF LATCH BOLT
 DEAD LOCK: 48" TO CENTERLINE
 PANIC DEVICE: 42" TO CENTERLINE

NOTES:
 1. DIMENSIONS NOTED ABOVE ARE RECOMMENDED MANUFACTURER STANDARDS THAT MEET ANSI AND ADA REQUIREMENTS
 2. DIMENSIONS NOTED ARE TAKEN FROM FINISH FLOOR TO CENTERLINE OF DEVICE
 3. DIMENSIONS NOTED ARE INDUSTRY STANDARDS. ANY CONFLICTS BETWEEN ARCHITECTURAL DETAILS WITHIN DOCUMENTS AND INDUSTRY STANDARD DIMENSIONS ARE TO BE REVIEWED WITH ARCHITECT PRIOR TO HARDWARE INSTALLATION

NOTES:
 1. LOCATE JAMB ANCHOR ABOVE HINGE REINFORCEMENTS AND JUST BELOW TOP REINFORCEMENT. CLIPS ON STRIKE SIDE TO OCCUR DIRECTLY OPPOSITE HINGE SIDE ANCHORS. POSITION CONCRETE AND MASONRY ANCHORS SIMILARLY).
 2. FOR DOUBLE DOORS 5'-0" OR WIDER, PROVIDE ADDITIONAL ANCHORS AT HEAD 6" FROM JAMBS AND 24" O.C. THEREAFTER.

4 TYPICAL FRAME ELEVATION DETAIL
 1/2" = 1'-0"



1 DOOR TYPES
 3/8" = 1'-0"

2 FRAME TYPES
 3/8" = 1'-0"

3 BORROWED LITE TYPES
 3/8" = 1'-0"

5 HEAD DETAIL - TYP.
 3" = 1'-0"

6 JAMB DETAIL - TYP.
 3" = 1'-0"

7 TYP HM BORROWED LIGHT W/ INTEGRAL BLIND (HEAD/SILL)
 3" = 1'-0"

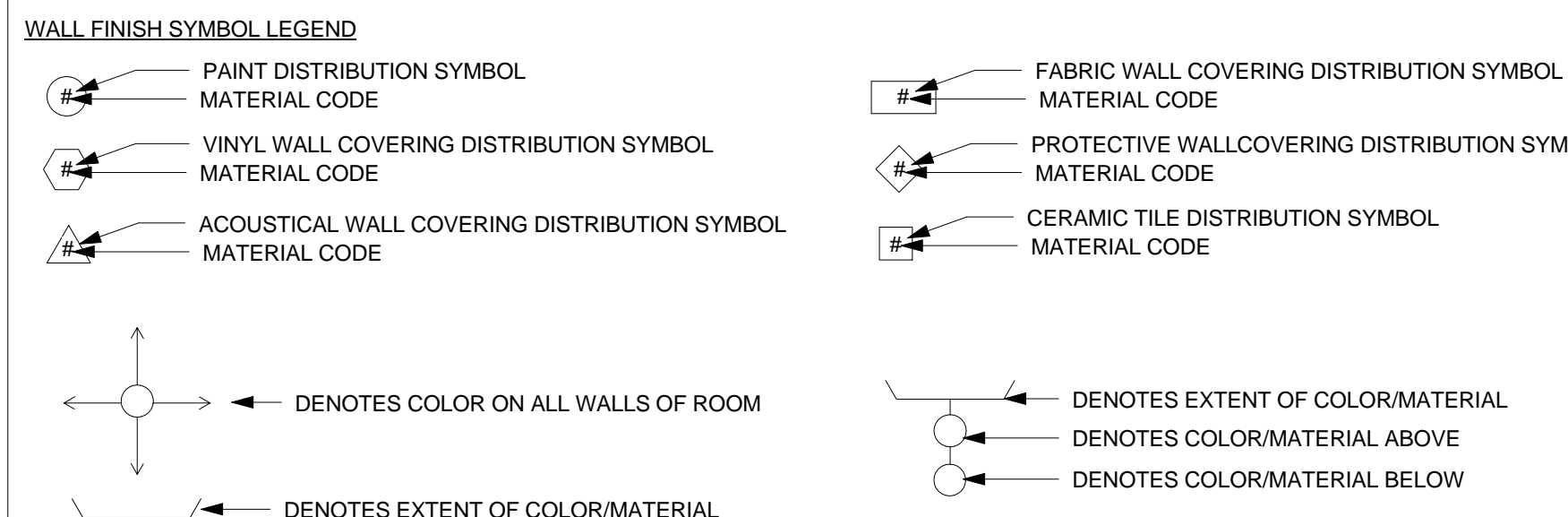
8 TYP HM BORROWED LIGHT W/ INTEGRAL BLIND (JAMB)
 3" = 1'-0"

ROOM FINISH SCHEDULE						
NUMBER	NAME	BASE FINISH	FLOOR FINISH	CEILING	WALL FINISH	COMMENTS
200	EXISTING TOILET	TL-1	TL-1	PTD GWB	PT-1 TL-2	MATCH WALL FINISHES TO EXISTING ROOM
201	PRE/POST RECOVERY	RB	RBS-1	ACT-1	PT-1	
202	C-SECTION 2	RB	RBS-1	PTD GWB	PT-2	CLEAN ROOM STANDARDS, EPOXY WALL PAINT
203	EQUIP STORAGE	RB	RBS-1	ACT-1	PT-1	
204	OR 30	RB	RBS-1	ETR	PT-1	NEW FLOOR; CEILING WORK ONLY AS NEEDED FOR MONITOR BOOM ADDITION AND CEILING MOUNTED GAS/POWER OUTLETS
205	SUB- STERILE	ETR	ETR	ETR	PT-1	WALLS, FLOOR, AND CEILING TO MATCH EXISTING WHERE AFFECTED BY NEW CONSTRUCTION
206	EQUIP STORAGE	RB	RBS-1	ACT-1	PT-2	CLEAN ROOM STANDARDS, EPOXY WALL PAINT
207	CLEAN HOLDING	RB	RBS-1	ACT-1	PT-2	CLEAN ROOM STANDARDS, EPOXY WALL PAINT
208	STRETCHER ALCOVE	RB	RBS-1	ACT-1	PT-1	
209	CORRIDOR	RB	RBS-1	ACT-1	PT-1	
210	CORRIDOR	RB	RBS-2/3/4	ACT-1	PT-1	
211	BEREAVEMENT	RB	RBS-1	ETR	PT-1	

NOTE:
 ALL FINISHES TO MATCH EXISTING WHEN ADJACENT TO EXISTING SURFACES IN SAME PLANE

WALL FINISH NOTES

WALL FINISH MATERIALS ARE IDENTIFIED ON BOTH THE ROOM FINISH SCHEDULE AND ON THE ATTACHED WALL FINISH DISTRIBUTION PLAN. THE COMPLEXITY OF FINISHES/MATERIALS ARE CLARIFIED ON THE DISTRIBUTION PLANS BY ONE OF THE SYMBOLS NOTED BELOW:



- PAINT**
 PT
 AREAS DESIGNATED AS PT SHALL BE SHERWIN WILLIAMS SUPERPAINT XXXX COLOR.
 EXCEPT THOSE WALLS DESIGNATED TO RECEIVE ANOTHER COLOR DESIGNATED BY THE SYMBOLS BELOW:
 (tb) AREAS DESIGNATED AS EPXY SHALL USE SAME COLOR CODE AS NOTED ABOVE.

- TILE**
 TL-2
 MATCH EXISTING

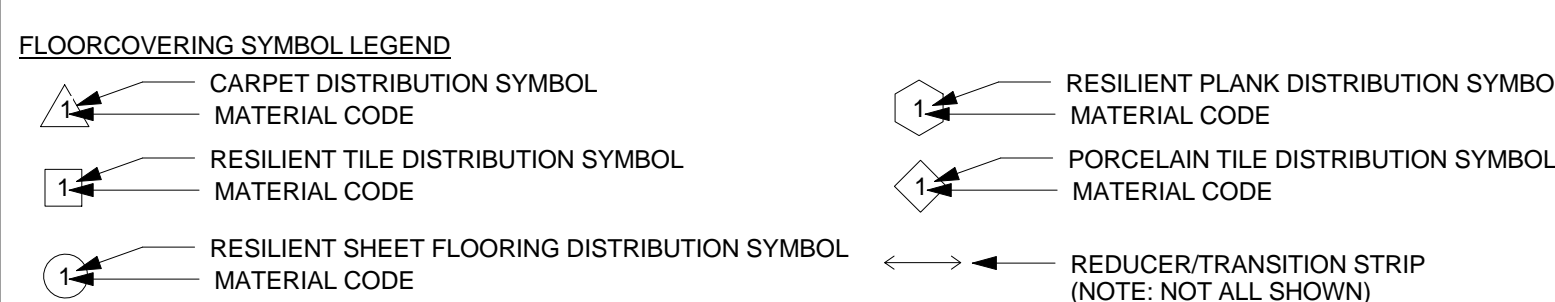
- CRASH RAIL**
 CR
 AREAS DESIGNATED WITH CR SHALL RECEIVE CRASH RAIL TO MATCH EXISTING.

- CORNER GUARD**
 CG
 AREAS DESIGNATED WITH CG-1 SHALL RECEIVE 48" STAINLESS STEEL CORNER GUARD TO MATCH EXISTING.

- CONTRACTOR SHALL SUBMIT TO THIS OFFICE ACTUAL SAMPLES IN TRIPLICATE OF ALL COLORS, MATERIALS AND PATTERNS FOR DESIGNER'S VERIFICATION AND APPROVAL. NOTES: NOT LATER THAN TWO (2) WEEKS FROM DATE OF CONTRACT. SIZE OF SAMPLES SHALL BE APPROXIMATELY 12"x12". SAMPLES SHALL BE PROPERLY LABELED BY PROJECT AND CODE AND SUBMITTED FOR APPROVAL PRIOR TO CONTRACTOR ORDERING MATERIAL.**
- PROTECTIVE WALL COVERING**
 PWC
 AREAS DESIGNATED AS PWC SHALL RECEIVE INPRO CORP. RIGID VINYL SHEET, COLOR: TBD

FLOORCOVERING FINISH NOTES

FLOORCOVERING MATERIALS ARE IDENTIFIED ON BOTH THE ROOM FINISH SCHEDULE AND ON THE ATTACHED FLOORCOVERING DISTRIBUTION PLAN. THE COMPLEXITY OF FINISHES/MATERIALS ARE CLARIFIED ON THE DISTRIBUTION PLANS BY ONE OF THE SYMBOLS NOTED BELOW:



1 RESILIENT TILE FLOORING

- VCT (VINYL COMPOSITION TILE)
 AREAS DESIGNATED AS VCT SHALL RECEIVE ARMSTRONG, STRIATIONS BBT W/ BIOSTRIDE, COLOR: TBD, 12"x24"x1/8"
 NOTE: TO BE INSTALLED W/ STRIATIONS RUNNING IN SAME DIRECTION.

2 RUBBER SHEET

- RBS-1
 AREAS DESIGNATED AS RBS-1 SHALL RECEIVE NORA RUBBER SHEET, STYLE, COLOR, SIZE, 3mm
- RBS-2
 AREAS DESIGNATED AS RBS-2 SHALL RECEIVE NORA RUBBER SHEET, STYLE, COLOR, SIZE, 3mm
- RBS-3
 AREAS DESIGNATED AS RBS-3 SHALL RECEIVE NORA RUBBER SHEET, STYLE, COLOR, SIZE, 3mm

3 TILE FLOORING

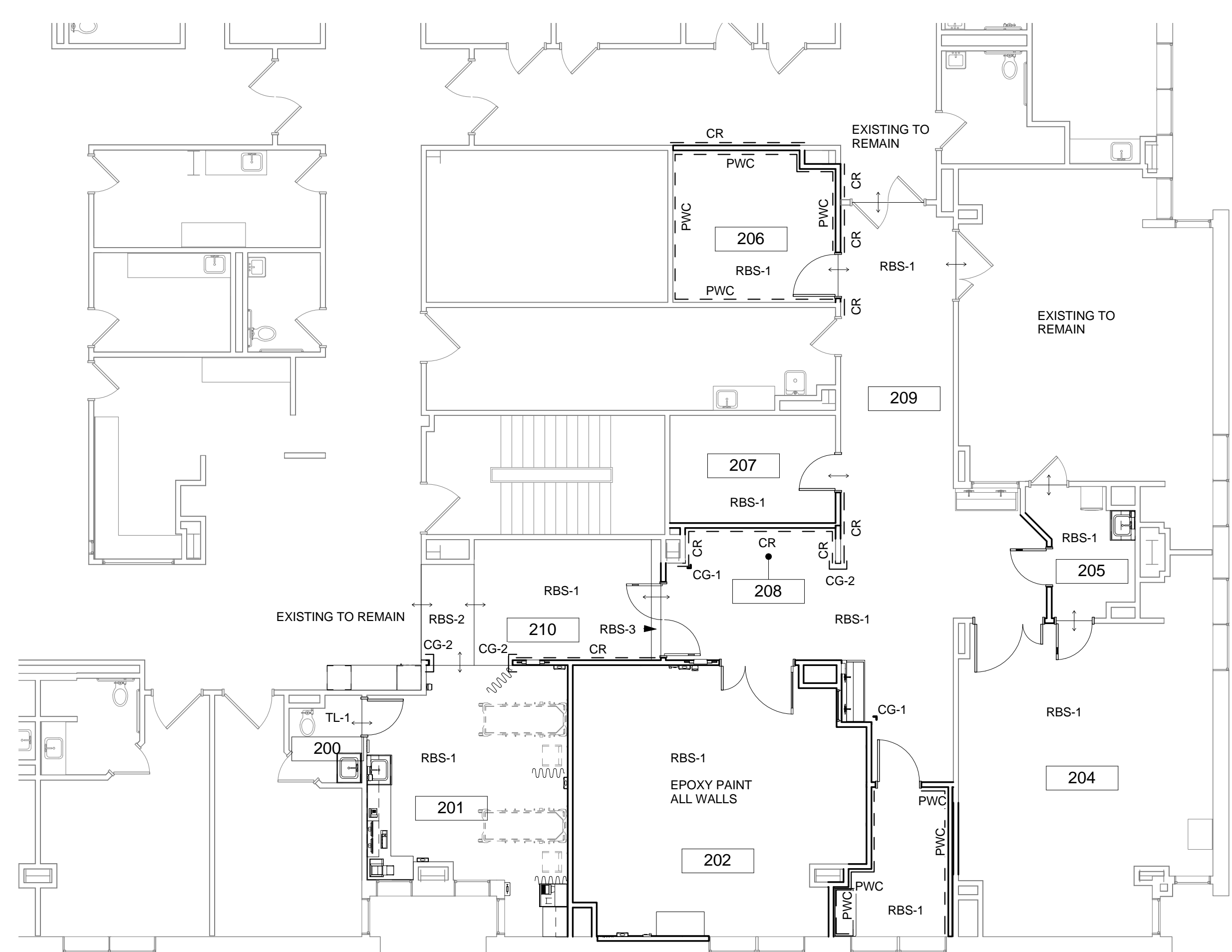
- TL-1 (PORCELAIN STONEWARE)
 AREAS DESIGNATED AS TL-1 SHALL RECEIVE MARAZZI, LOUNGE 14, COLOR: TBD, 12"x24"

4 BASE

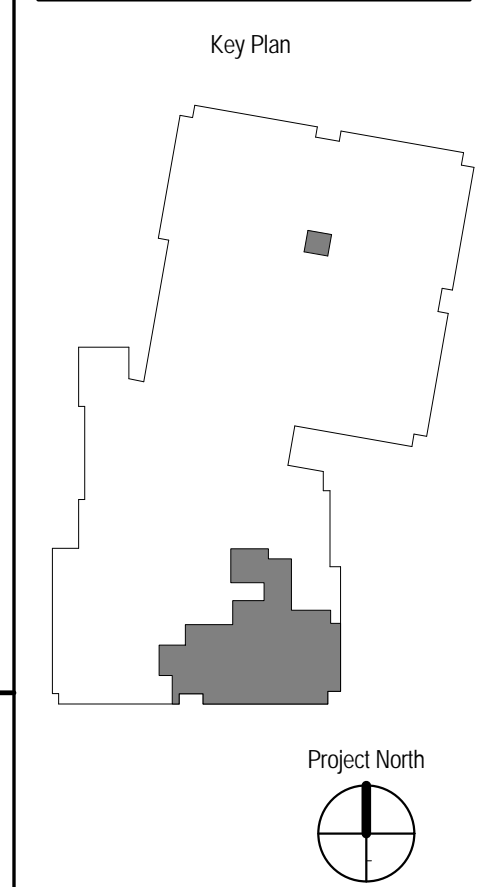
- NOTE: BASE WILL VARY DEPENDING UPON LOCATION AND PRODUCT. REFER TO ROOM FINISH SCHEDULE.
- RB (RUBBER BASE)
 RB: JOHNSONITE, PRODUCT: 4" HIGH RUBBER STRAIGHT BASE, COLOR: TBD
 NOTE: USE STRAIGHT BASE FOR CARPET CONDITION, COVE BASE FOR RESILIENT CONDITION.
 RB1: JOHNSONITE, MILLWORK PROFILE, STYLE: MANDALAY, 4.5" HIGH, COLOR: TBD
- INT (INTEGRAL)
 INT: ARMSTRONG, INTEGRAL BASE AS SPECIFIED TO MATCH FLOOR (ARMSTRONG MEDINTECH)
- TL-1A: MARAZZI LOUNGE 14, 6"x12" COVE BASE

5 TRANSITION STRIPS

- TRANSITION STRIPS FROM CPT TO SV AND VCT SHALL BE: JOHNSONITE REDUCER STRIP, COLOR: TBD FROM PCT TO CPT, USE: SCHLUTER, SCHIENE TO ACCOMMODATE TILE HEIGHT, FINISH: ALUMINUM. ADJUST CPT TO MATCH HEIGHT WITH LEVELING COMPOUND.
- NOTE: THE CONTRACTOR SHALL SUBMIT TO THIS OFFICE ACTUAL SAMPLES IN TRIPLICATE, OF EACH COLOR AND MATERIAL SELECTED BY THE DESIGNER FOR DESIGNER'S VERIFICATION AND APPROVAL NOT LATER THAN TWO (2) WEEKS FROM DATE OF CONTRACT. SAMPLES SHALL BE PROPERLY LABELED BY PRODUCT AND CODE.



9 FINISH FLOOR PLAN
 1/8" = 1'-0"



REV	DESCRIPTION	DATE
	PERMIT SET	7.27.2017



SEAL:
 PROJECT NUMBER: 2017009
 DATE: 07/27/2017
 SHEET TITLE AND NUMBER: