

REV LEVEL	CHANGE	BY	ECR #	DATE

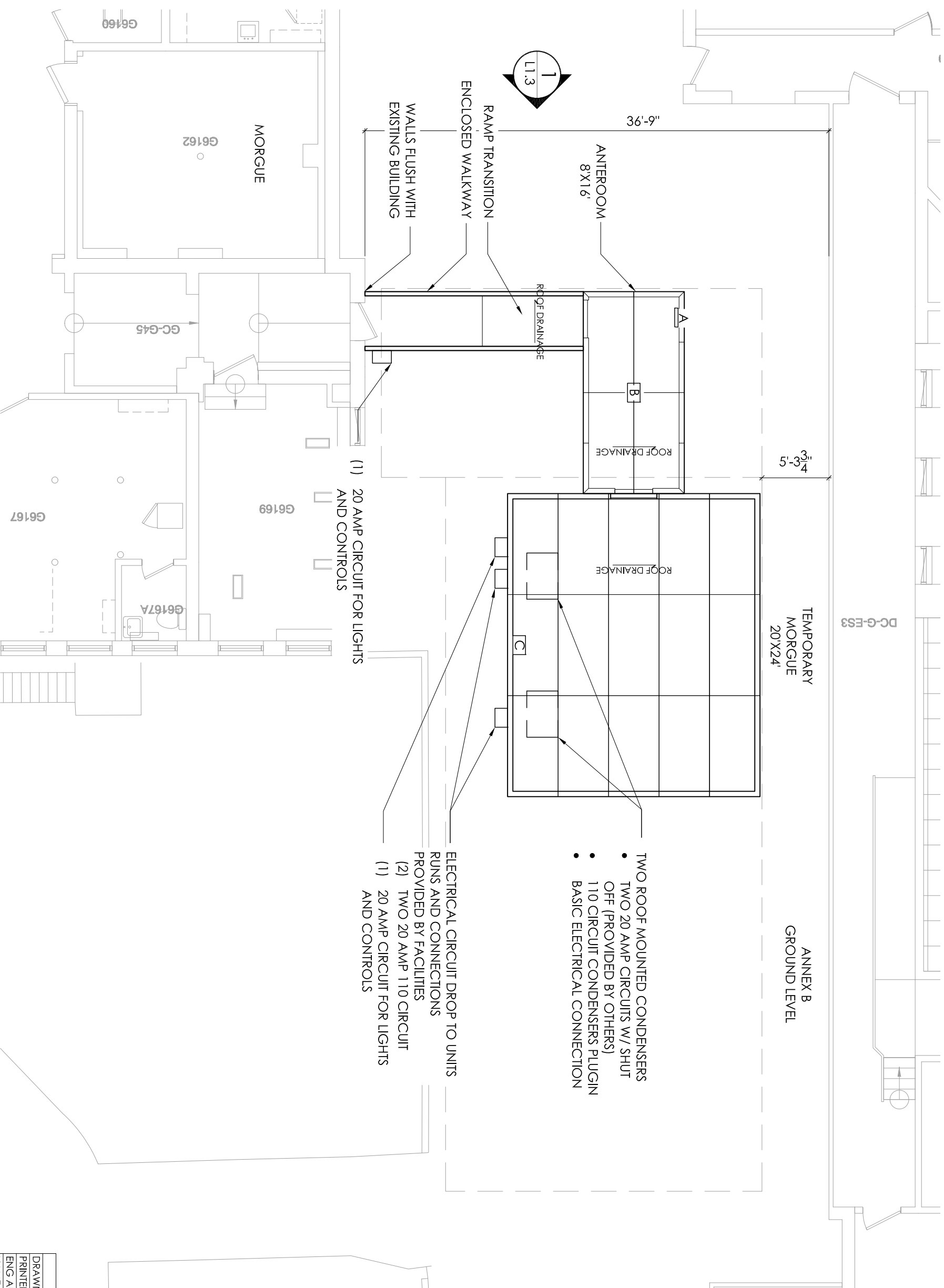
**PLATFORM AND RAMP NOTES:**

- WOOD SIZES**
- 4X4 POSTS
  - 2X4 BEAMS
  - 2X4 JOISTS

- BASIC CONSTRUCTION MATERIALS:**
- WOOD POSTS AND BEAMS
  - 4'X8' PLYWOOD
  - GALVANIZED HARDWARE
  - ALL COMPONENTS FIRE RESISTANT
  - SIMPLE PIPE RAILINGS ON RAMPS
  - NON SLIP PAINT UNDERFOOT RAILING PAINTED

- ANTEROOM NOTES:**
- FIRE ALARM, PROVIDED BY OTHERS
  - FIRE RETARDANT MATERIAL

- CIRCUIT DROP FOR POSSIBLE OPTIONS**
- A. PHONE, ALARM PANEL
  - B. ALARM
  - C. REMOTE THERMOSTAT, PROVIDED BY OTHERS



- TWO ROOF MOUNTED CONDENSERS
  - TWO 20 AMP CIRCUITS W/ SHUT OFF (PROVIDED BY OTHERS)
  - 110 CIRCUIT CONDENSERS PLUG IN
  - BASIC ELECTRICAL CONNECTION
- ELECTRICAL CIRCUIT DROP TO UNITS RUNS AND CONNECTIONS PROVIDED BY FACILITIES
- (2) TWO 20 AMP 110 CIRCUIT
  - (1) 20 AMP CIRCUIT FOR LIGHTS AND CONTROLS

(1) 20 AMP CIRCUIT FOR LIGHTS AND CONTROLS

NAME	DATE
DRAWN S. FAGAN	1/10/07
PRINTED	
ENG APPR	
NAME	

UNLESS OTHERWISE SPECIFIED DIMENSIONS ARE IN INCHES ANGLES ± .5° REF  
XXX = \$0.050

SIZE	FILENAME	REV
WORK ORDER	170607-Scim_MaineHealth	
SCALE 1:8	WEIGHT:	

**SCIMEDICO LLC**

**L1.1 - LAYOUT**