

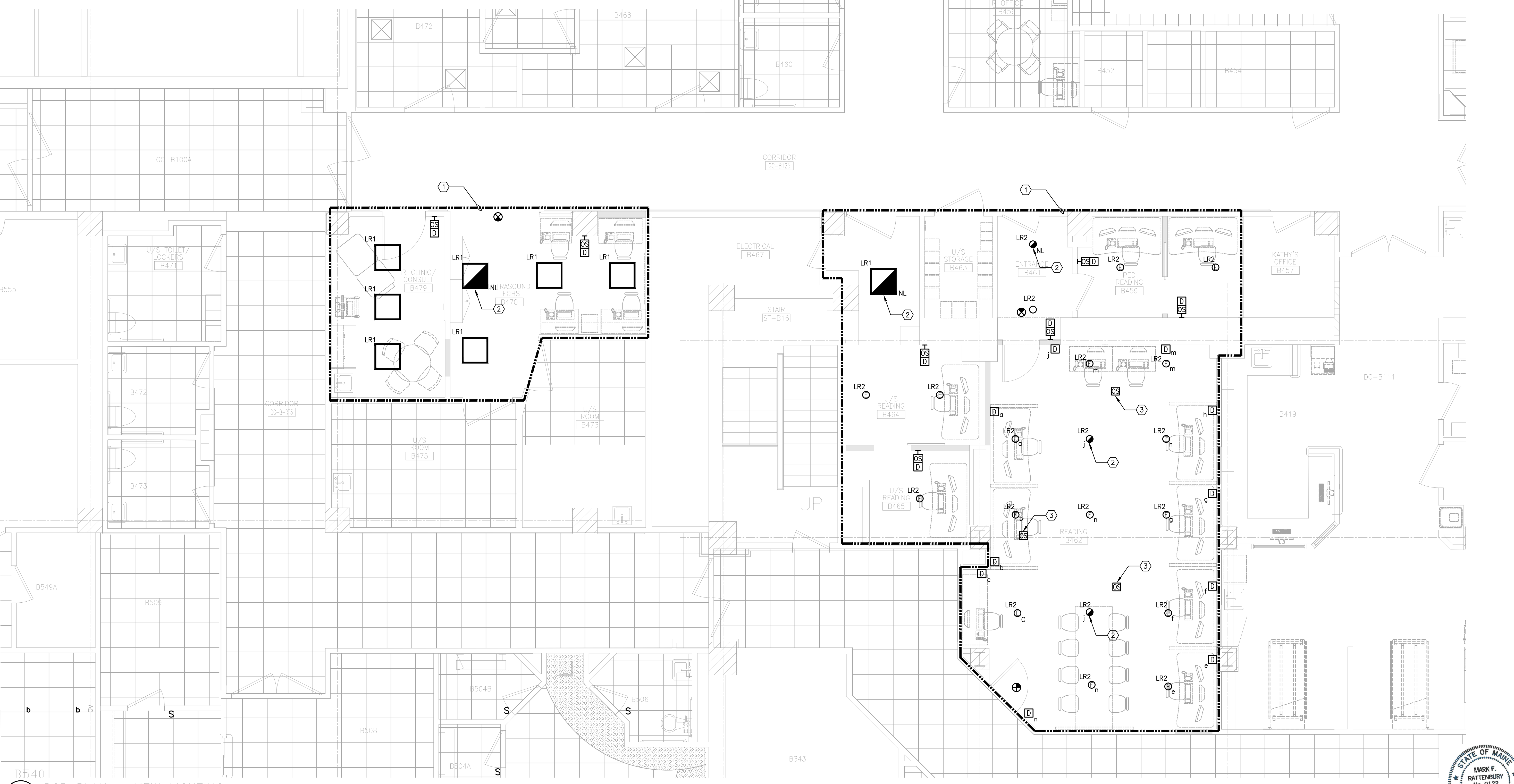
- DRAWING NOTES:**
- REFER TO DRAWING E-000 FOR LEGEND, SYMBOLS, DEMOLITION NOTES, GENERAL NOTES, AND CIRCUIT TRACING NOTE.
 - CONTRACTOR SHALL VERIFY ANY DEVICE AND/OR CIRCUIT IN QUESTION PRIOR TO ANY DEMOLITION.
 - CIRCUIT NUMBERS ARE SHOWN FOR DESCRIPTIVE PURPOSES ONLY. EXACT NUMBERS SHALL BE DETERMINED IN FIELD AND SHALL BE NOTED ON THE CONTRACTOR'S AS-BUILT DRAWINGS.
 - REFER TO ARCHITECTURAL REFLECTED CEILING PLAN FOR EXACT LOCATION OF LIGHT FIXTURES. FINAL LOCATIONS SHALL BE COORDINATED IN FIELD TO AVOID EXISTING DUCTWORK AND PIPING.
 - ALL OCCUPANCY SENSOR LOCATIONS ARE APPROXIMATE. REFER TO MANUFACTURERS INSTALLATION INSTRUCTIONS PRIOR TO INSTALLATION.
 - CONTRACTOR IS RESPONSIBLE FOR PROPER OCCUPANCY SENSOR SENSITIVITY AND TIME DELAY SETTINGS AND FIELD VERIFICATION OF CIRCUITS WITH RESPECT TO PROPER PLACEMENT.
 - ALL DAMAGED EXISTING LOCAL LIGHTING SWITCHES OR DEVICES THAT ARE TO REMAIN SHALL BE REPLACED WITH NEW DEVICES AND FACE PLATES. COORDINATE COLOR WITH ARCHITECT.
 - BRANCH CONDUCTORS SHALL BE SIZED AND INSTALLED FOR A MAXIMUM VOLTAGE DROP OF 3%. ELECTRICAL CONTRACTOR SHALL REFER TO SPECIFICATIONS FOR ADDITIONAL REQUIREMENTS AND OPTIONS.

| FIXTURE TYPE | DESCRIPTION | MANUFACTURER | CATALOG NUMBER | LAMPS | | FIXTURE LOAD (WATTS) | VOLTS | MOUNTING | REMARKS |
|--------------|---------------------------------|-------------------|---------------------------------|-------|------|----------------------|-------|----------|--|
| | | | | NO. | TYPE | | | | |
| LR1 | Recessed 2x2 LED Troffer | Day-O-Lite | HML-F-D-SI-35-S0-22-G-W-U-DIM10 | 1 | LED | 34w | UNW | Recessed | |
| LR2 | Recessed 4" aperture down light | Atlantic Lighting | LED4-DLM30-35K-UJ-SS | 1 | LED | 36w | UNV | Recessed | 0-10v dimming |
| EXT | Edge Lite exit sign | Sure-Lites | EUX6-R-SD | NA | LED | 4W | UNV | SURFACE | Contractor shall order the number of faces, chevrons and mounting mode as indicated on lighting plans. |

- DRAWING CODED NOTES:**
- CONNECT TO LOCAL NORMAL POWER EXISTING LIGHTING CIRCUIT AHEAD OF ANY CONTROLS UNLESS NOTED TO CONNECT TO LIFE SAFETY POWER.
 - CONNECT TO NEAREST LIFE SAFETY EXISTING LIGHTING CIRCUIT AHEAD OF ANY CONTROLS.
 - OCCUPANCY SENSOR TO CONTROL ALL LIGHTING EXCEPT LIFE SAFETY.

LIGHTING FIXTURE SCHEDULE

2 RCP PLAN - NEW LIGHTING
SCALE: 1/4"=1'-0"

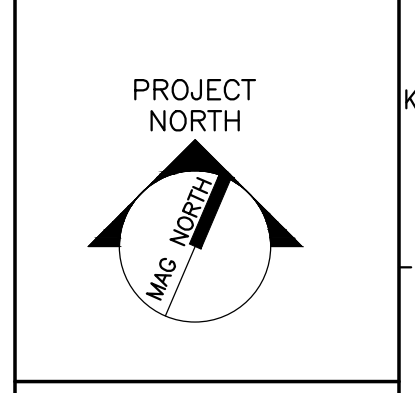


1 RCP PLAN - NEW LIGHTING
SCALE: 1/4"=1'-0"

144 Fore Street/P.O. Box 618
Portland, Maine 04104
Tel. (207) 772-3846
Fax. (207) 772-1070
www.smtinc.com

**ARCHITECTURE
ENGINEERING
PLANNING
INTERIOR DESIGN
COMMISSIONING**

SMART



AKF
99 Bedford Street, 2nd Fl.
Boston, MA 02111
T: 617.737.1111 F: 617.737.4311

**MAINE MEDICAL CENTER
IR READING ROOM AND U/S RENOVATION
PORTLAND, MAINE**

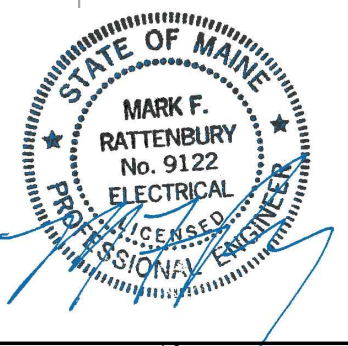
CURRENT ISSUE STATUS: PERMITTING

| REV | DESCRIPTION | DATE |
|----------|-----------------------|------|
| 03-31-17 | ISSUED FOR PERMITTING | |

GRAPHIC SCALE:
0" 1"

SCALE: 1/4"=1'-0"

PROJECT MANAGER:
JC/DRAWN BY:
A/E OF RECORD:
CAD FILE:
PROJECT NO: B160305-000
DATE: 03-31-17
SHEET TITLE:
**ELECTRICAL
FLOOR PLAN -
LIGHTING**
SHEET No.
E-300



SAVE DATE: 3/31/2017 12:53 PM
PLOT DATE: 3/31/2017 1:58 PM
LOGIN: Jaques, Christopher
PL:\Projects\B160000\B160305-000\Design\Mgmt\CAD\Elect\B160305-000_E-300.dwg