

FLOOR PLAN NOTES:

1. SEE GENERAL NOTES ON 61002.
2. FURNITURE DASHED IN BY OTHERS IS INDICATED FOR COORDINATION. PROVIDE IN WALL BLOCKING FOR ALL WALL MOUNTED CASEWORK, FURNITURE, EQUIPMENT AND ANY OTHER NIC ITEM.
3. PARTITION TYPE \diamond IS TYPICAL UNLESS NOTED OTHERWISE.
4. REFER TO DETAILS AND/OR ENLARGED PLANS FOR ADDITIONAL INFORMATION.
5. AT ALL REMOVED ITEMS, PATCH WALL SURFACE TO MATCH ADJACENT MATERIAL, TYPICAL.
6. EXTERIOR DIMENSIONS ARE FROM FACE OF STUD TO FACE OF STUD, UNLESS NOTED OTHERWISE.
7. CORNER GUARDS UP TO 48" A.F.F. FROM TOP OF BASE, TYPICAL.
8. ALL DASHED KEYED NOTES REFER TO ITEMS ON GE SITE PLANNING GUIDE DRAWINGS.

KEYED NOTES:

- 1 OWNER PROVIDED FURNITURE. CONTRACTOR TO PROVIDE BLOCKING AND COORDINATE POWER AND DATA OUTLETS.
- 2 WALL MOUNTED MONITOR, PROVIDE BLOCKING. COORDINATE WITH OWNER ON SIZE AND LOCATION
- 3 PROVIDE ADD AIR BRACE TO REPLACE COUNTER TOP WITH SOLID SURFACE OVER EXISTING CABINETS. RESET EXISTING SINK IN NEW COUNTER. REPAIR DOOR HINGES, PULLS. ANY DELAMINATED PLAM ON FACE OF CABINETS.

WALL LEGEND

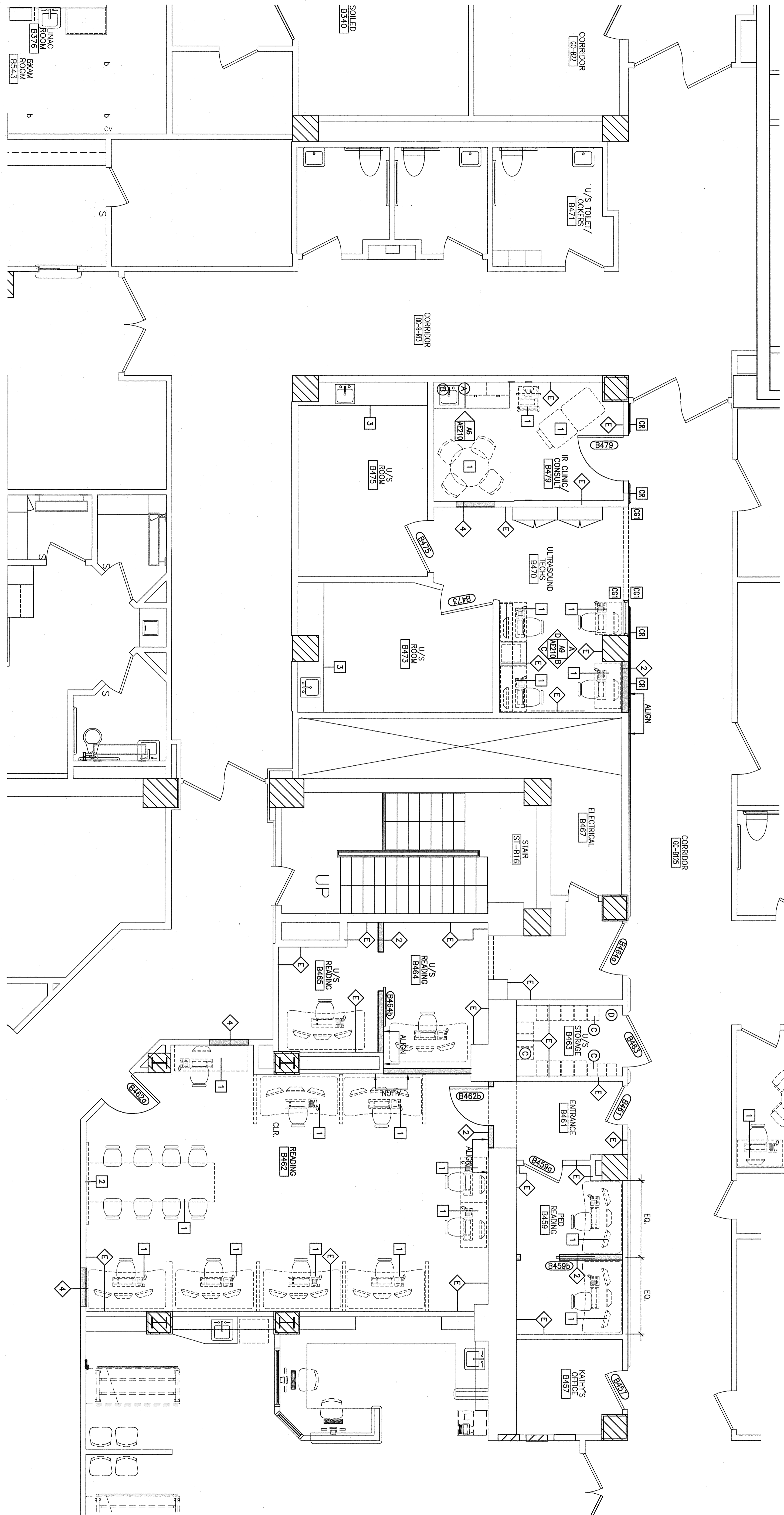
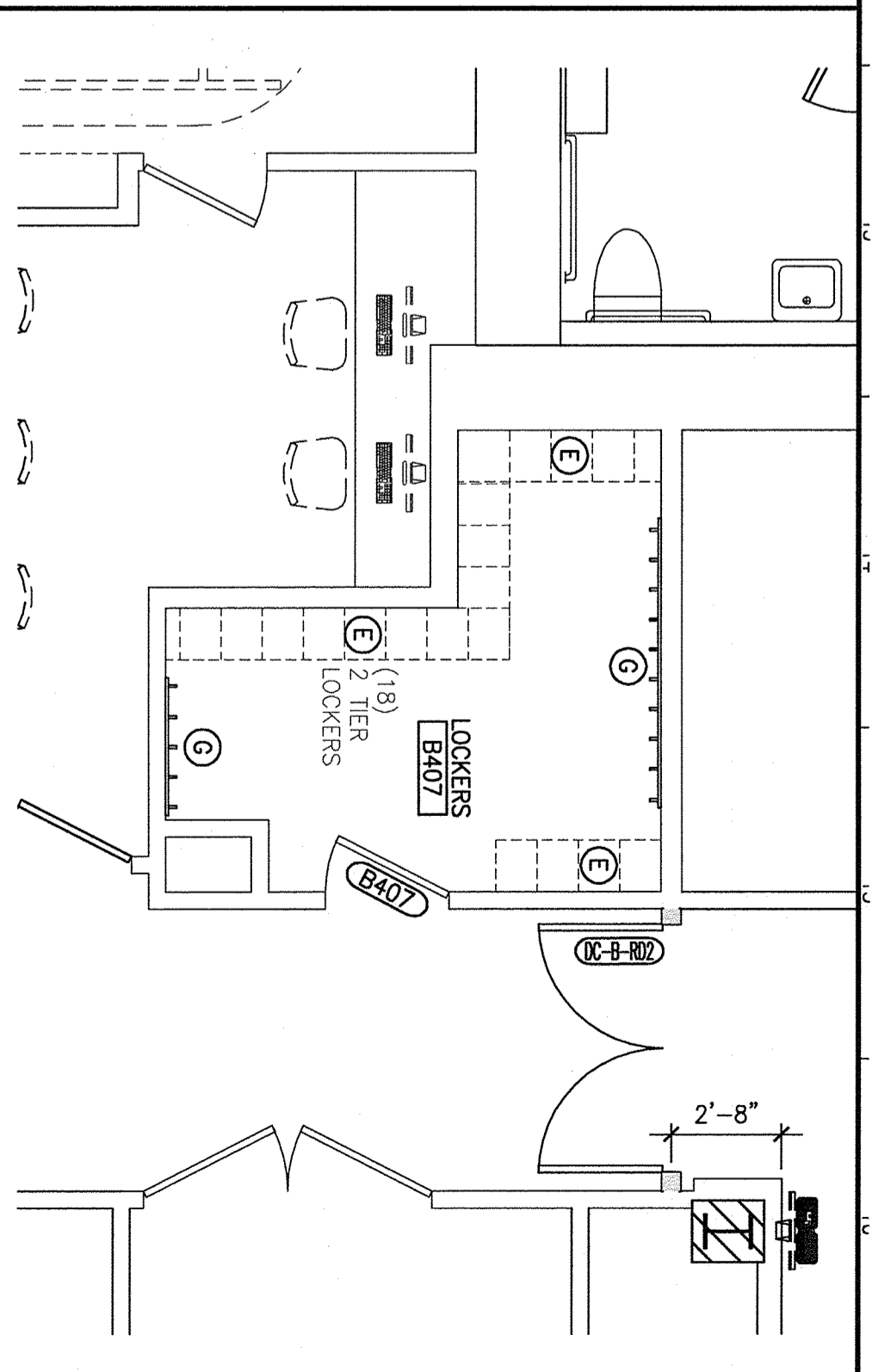
- \diamond PARTITION TYPE, SEE 61002
- --- INDICATES 1-HOUR RATED PARTITION/ WALL
- --- INDICATES 2-HOUR RATED PARTITION/ WALL
- --- CORNER GUARD-1: 90 DEGREE-UP TO 84" FROM TOP OF BASE
- --- CORNER GUARD-2: END WALL PROTECTOR-UP TO 42" FROM TOP OF BASE
- --- REINSTALL PORTION OF REMOVED CHAIR RAIL, PROVIDE NEW TO MATCH EXISTING OTHERWISE.

ACCESSORY SCHEDULE

TAG	DESCRIPTION	O/C
(A)	SOAP DISPENSER	O/C
(B)	PAPER TOWEL DISPENSER	O/C
(C)	BINS AND GRIDS	O/C
(D)	PANS SYSTEM	O/C
(E)	LOCKERS, 12"x15"	O/O
(F)	COAT HOOKS ON PLAM BACKER	O/O
(G)		C/C

C/C - CONTRACTOR FURNISHED/CONTRACTOR INSTALLED
 O/C - OWNER FURNISHED/CONTRACTOR INSTALLED
 O/O - OWNER FURNISHED/OWNER INSTALLED
 CONTRACTOR SHALL PROVIDE BLOCKING IN WALL AT ALL ACCESSORIES. SEE K19/AE301

K12 PARTIAL FLOOR PLAN



A6	FLOOR PLAN
1/4"=1'-0"	*

<p>GRAPHIC SCALE: 0 1' 2'</p> <p>SCALE: 1/4"=1'-0"</p> <p>PROJECT MANAGER: DMV</p> <p>UP/DRAWN BY: MDR</p> <p>A/E OF RECORD: DMV</p> <p>CAD FILE: AE111-15207</p> <p>PROJECT NO.: 15207</p> <p>DATE: 15207</p> <p>SHEET TITLE: FLOOR PLAN</p>	<p>MAINE MEDICAL CENTER IR READING ROOM AND U/S RENOVATION PORTLAND, MAINE</p> <p>ISSUED FOR PERMITTING 3-31-17</p> <p>ISSUED FOR PERMITTING 3-31-17 CURRENT ISSUE STATUS:</p>	<p>5.30.17</p> <p>LICENSED ARCHITECT DEREK J. VEILSKA NO. 3195 STATE OF MAINE</p>	<p>PROJECT NORTH MAG NORTH</p>	<p>SMRT</p> <p>ARCHITECTURE ENGINEERING PLANNING INTERIOR DESIGN COMMISSIONING</p> <p>144 Fore Street/P.O. Box 618 Portland, Maine 04104 tel. (207) 772-3846 fax. (207) 772-1070 www.smrtinc.com</p>
---	--	--	---	---