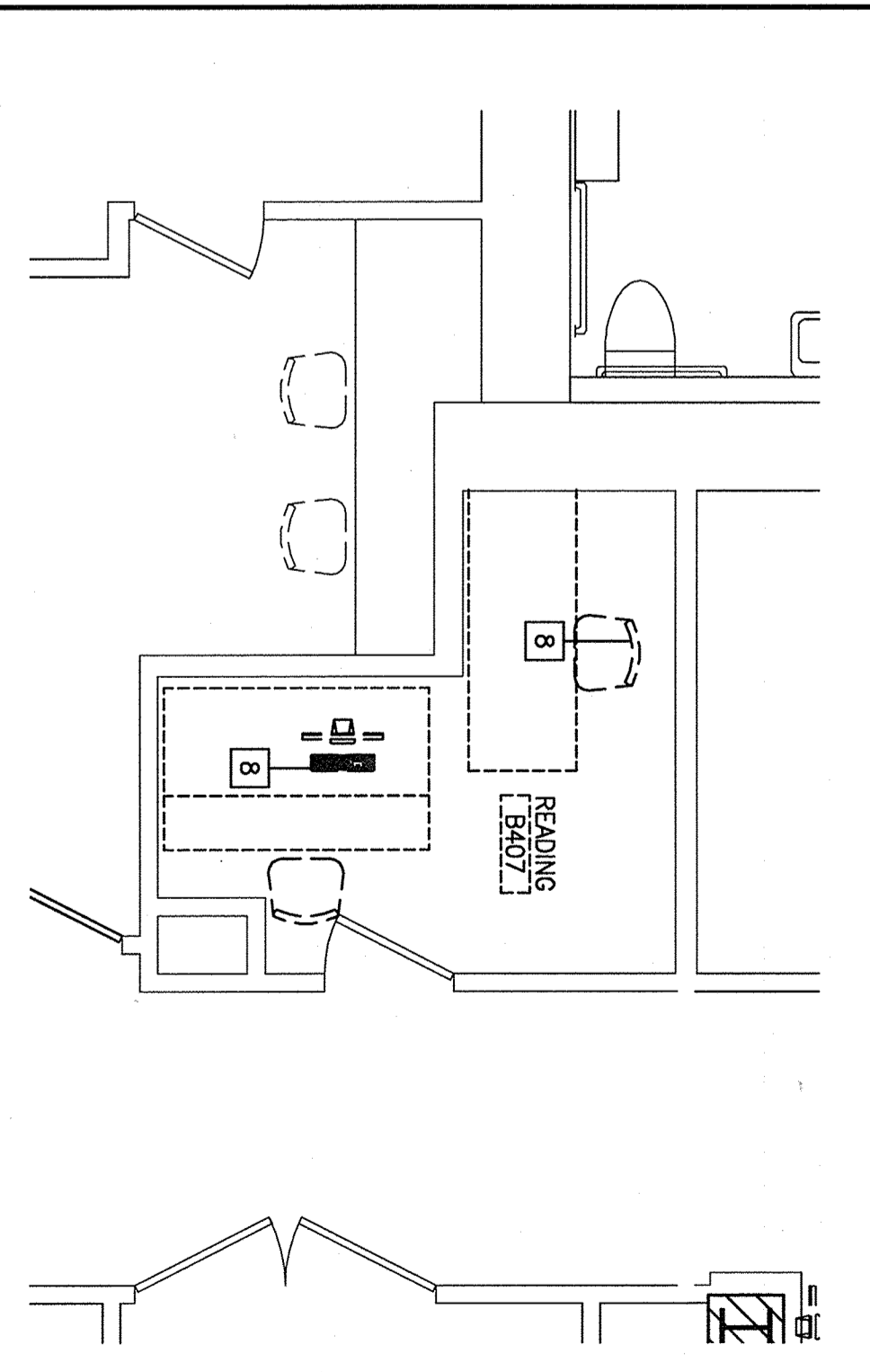
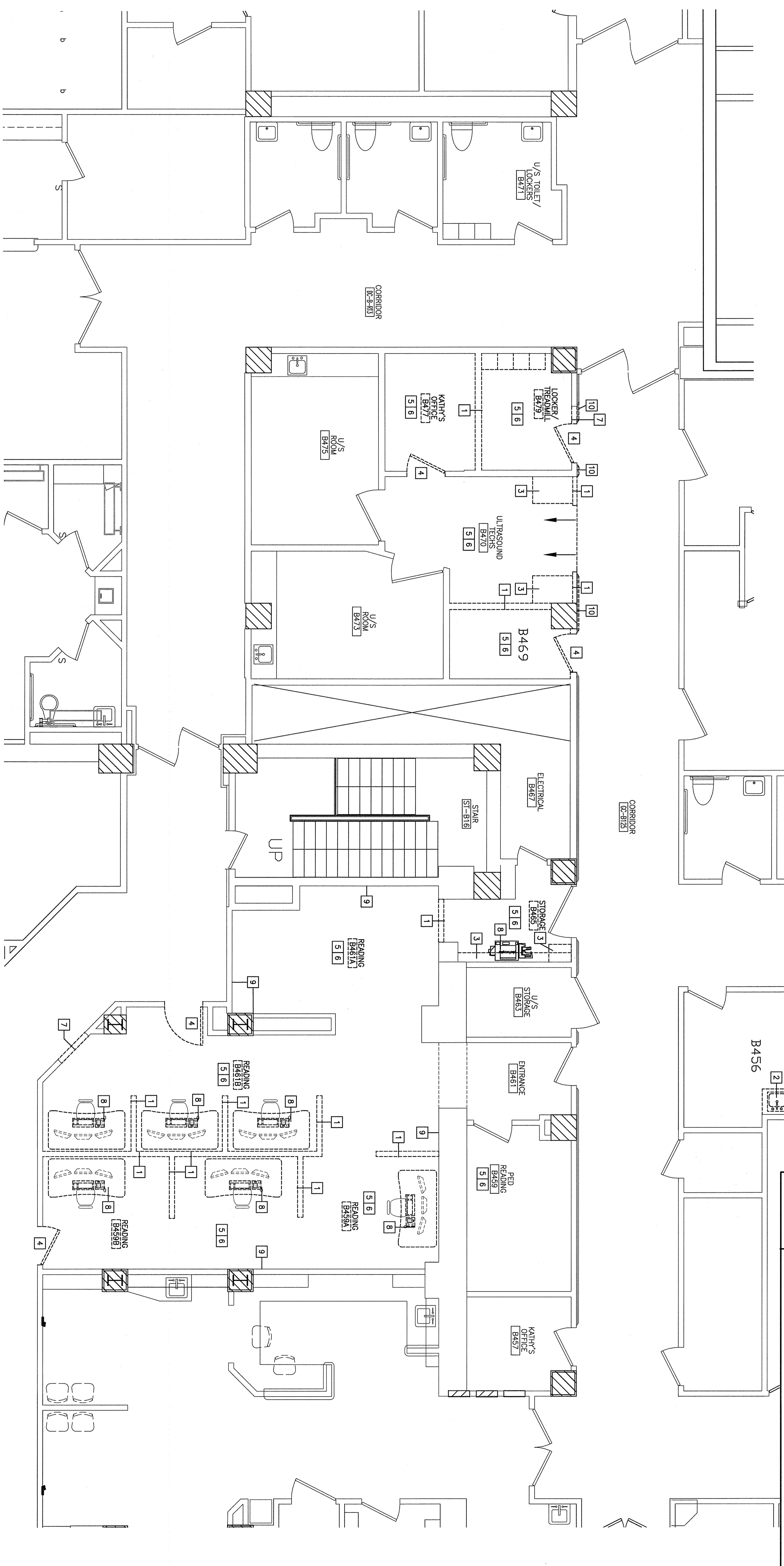


- DEMOLITION KEY NOTES:**
- 1 REMOVE PARTITION ASSEMBLY IN ITS ENTIRETY.
 - 2 REMOVE EXISTING PLUMBING FIXTURE COMPLETE.
 - 3 REMOVE EXISTING CASEWORK COMPLETE.
 - 4 REMOVE DOOR, FRAME AND HARDWARE ASSEMBLY.
 - 5 REMOVE CEILING TILE AND GRID ASSEMBLY OR GWB CEILING ASSEMBLY COMPLETE. COORDINATE EXTENTS OF REMOVAL WITH PARTITION LOCATIONS AND EXISTING FINISHES TO REMAIN.
 - 6 REMOVE FLOORING SYSTEM AND PREPARE SUBSTRATE FOR PROPOSED FINISH.
 - 7 REMOVE PARTITION ASSEMBLY TO THE EXTENT REQUIRED FOR INSTALLATION OF DOOR. COORDINATE EXTENTS WITH FINISHES TO REMAIN. REFERENCE DOOR SCHEDULE.
 - 8 EQUIPMENT/FURNITURE REMOVED BY OWNER
 - 9 REMOVE ANY MISC. WALL MOUNTED ITEMS ALONG WALL SURFACE. PROVIDE ITEM TO OWNER.
 - 10 REMOVE OR CUT BACK CHAIR RAIL FOR INSTALLATION OF DOOR. SAVE FOR REINSTALLATION.

- GENERAL DEMOLITION NOTES:**
1. COORDINATE EXTENT OF DEMOLITION WITH THE REQUIREMENTS OF THE CONTRACTOR'S SUBMITTALS, AND WITH LOCATIONS OF FINISHES NOTED AS EXISTING TO REMAIN.
 2. ANY WALL, PARTITION OR SURFACE DISTURBED BY WORK OF THIS CONTRACT SHALL BE PATCHED AND FINISHED CONTINUOUSLY TO THE NEAREST CORNER UNLESS NOTED OTHERWISE. MATCH EXISTING ADJACENT CONSTRUCTION FINISHES, CONTINUITY AND FIRE RATINGS UNLESS NOTED OTHERWISE.
 3. PROTECT ALL FINISHES, MATERIALS AND EQUIPMENT NOTED AS TO REMAIN. CONTRACTOR SHALL BE RESPONSIBLE TO REMOVE ALL REMAINING MATERIALS AND EQUIPMENT DAMAGED DURING CONSTRUCTION.
 4. FOR EXTENTS OF CEILING GRID REMOVALS AND ADJUSTMENTS REFER TO SHEET AE110.
 5. DIMENSIONS INDICATED ± ARE EXISTING CONDITION DIMENSIONS TO BE VERIFIED IN FIELD.
 6. OWNER IS RESPONSIBLE FOR THE REMOVAL AND RELOCATION OF EXISTING FURNITURE WITH IN SCOPE OF CONSTRUCTION.
 7. ALL MEDICAL COMPUTER EQUIPMENT WILL BE REMOVED AND RELOCATED BY OWNER, AV/OR OWNERS CONTRACTOR.



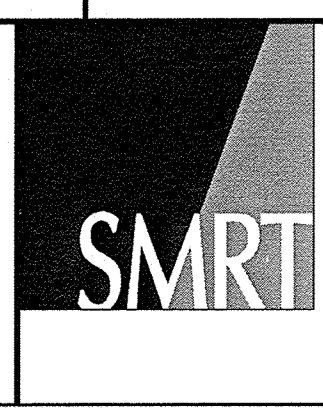
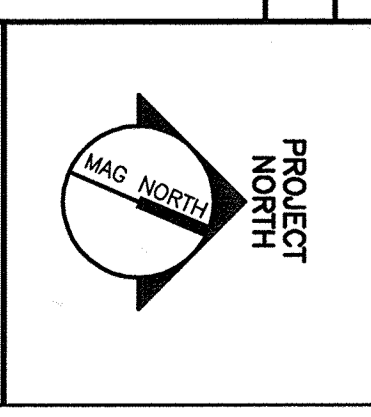
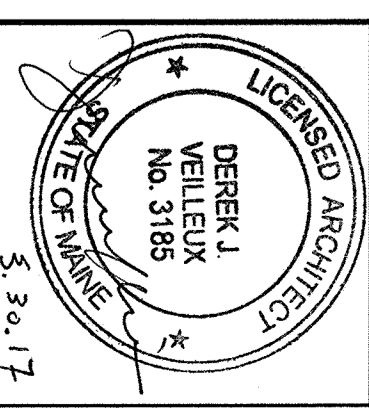
K12 DEMOLITION PLAN
1/4"=1'-0"

GRAPHIC SCALE: 0 1' 1/4"=1'-0"

REV	DESCRIPTION	DATE	CURRENT ISSUE STATUS:
0	ISSUED FOR PERMITTING	3-31-17	

SCALE: 1/4"=1'-0"
 PROJECT MANAGER: DMV
 JC/DRAWN BY: MDR
 A/E OF RECORD: DMV
 CAD FILE: AD101-15207
 PROJECT NO.: 15207
 DATE: 15207
 SHEET TITLE: DEMOLITION PLAN

MAINE MEDICAL CENTER
IR READING ROOM AND U/S RENOVATION
 PORTLAND, MAINE
ISSUED FOR PERMITTING
3-31-17



ARCHITECTURE
 ENGINEERING
 PLANNING
 INTERIOR DESIGN
 COMMISSIONING

144 Fore Street/P.O. Box 618
 Portland, Maine 04104
 tel. (207) 772-3846
 fax. (207) 772-1070
 www.smrtime.com