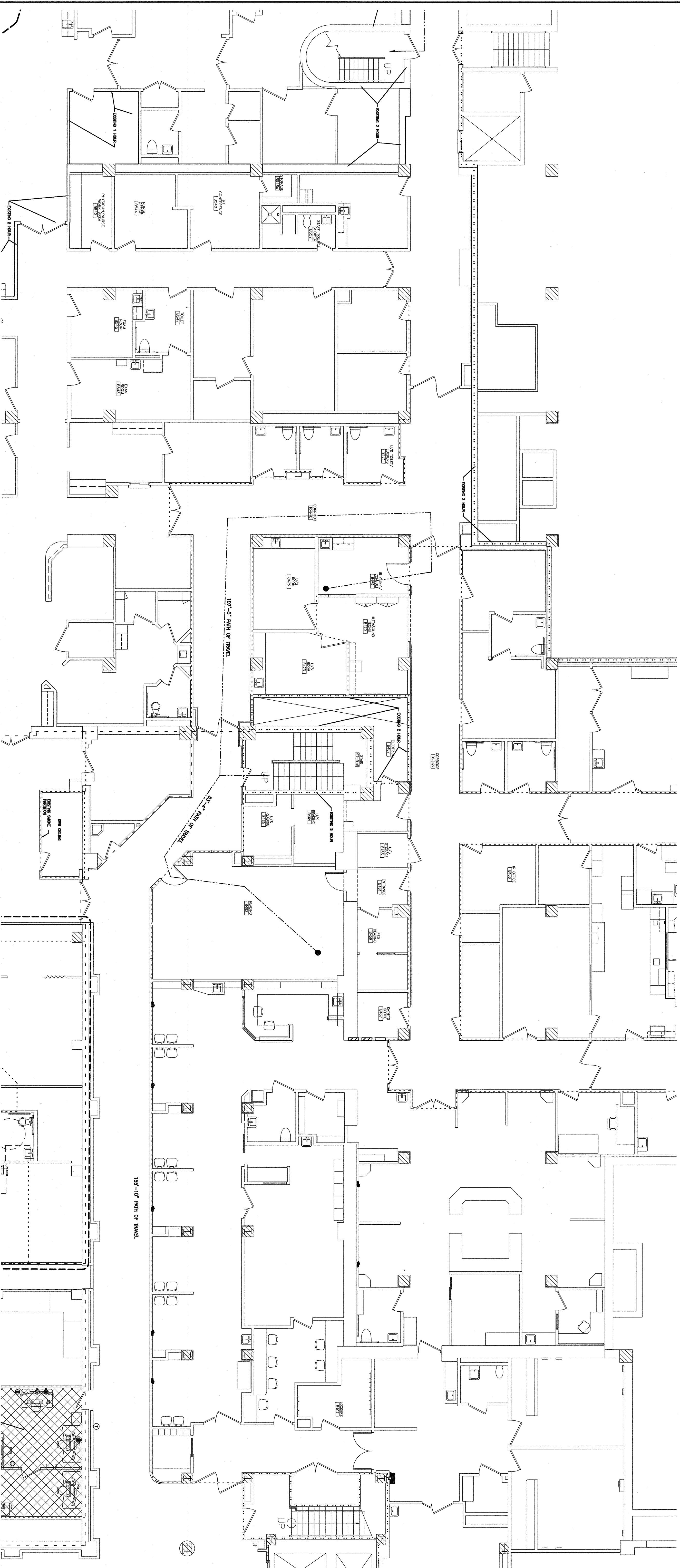


RENOVATION SQUARE FOOTAGES:



GENERAL NOTES:

1. SEE 6002 FOR GENERAL NOTES.

APPLICABLE CODES:

- GENERAL:
- INTERNATIONAL BUILDING CODE (IBC) 2009 EDITION
 - NFPA LIFE SAFETY CODE 101, 2000 and 2009 EDITION
 - 2009 ADA STANDARDS FOR ACCESSIBLE DESIGN
 - NFPA 1 Uniform Fire Code, 2006 and 2009
 - GUIDELINES FOR DESIGN AND CONSTRUCTION OF HEALTH CARE FACILITIES, THE FACILITY GUIDELINES INSTITUTE, 2010 EDITION.

CODE COMPLIANCE STRATEGY NOTES:

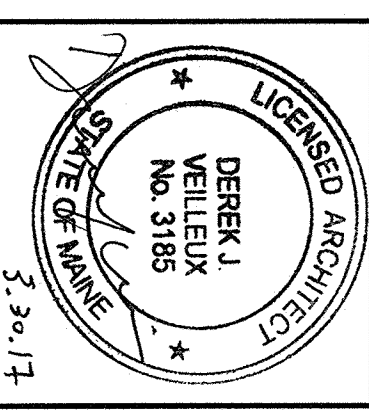
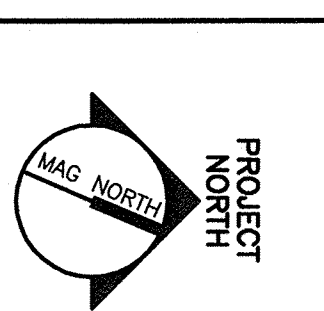
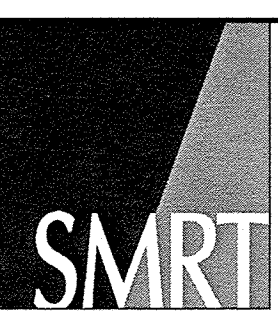
1. BUILDING CONSTRUCTION TYPE: II (2.2.2)
2. LIFE SAFETY CODE OCCUPANCY: AMBULATORY HEALTHCARE
3. FULLY SPRINKLERED, SUPERVISED SYSTEM
4. MAX PATH OF TRAVEL = 150 FEET
5. DEAD END LIMIT @ NEW CORRIDOR = 30'-0" (NFPA 101: 19.2.5.2)
6. COMMON PATH OF TRAVEL LIMIT = NO REQUIREMENT (NFPA 101: TABLE A.7.6)
7. A UL LISTED THROUGH-PENETRATION FIRESTOP SYSTEM SHALL BE PROVIDED AT ALL PENETRATIONS REQUIRED BY ANY TRADE THROUGH A FIRE OR SMOKE RATED ASSEMBLY. THE UL LISTED THROUGH-PENETRATION FIRESTOP SYSTEM PROVIDED SHALL MEET THE RATING REQUIREMENTS OF THE FIRE OR SMOKE RATED ASSEMBLY PENETRATED.
8. WHERE MULTIPLE CODE EDITIONS ARE NOTED, CONTRACTOR TO PROVIDE WORK IN ACCORDANCE TO THE MORE STRINGENT.

LEGEND

- 2 HOUR RATED WALL [Symbol]
- SMOKE PARTITION [Symbol]
- SMOKE BARRIER [Symbol]
- FIRE EXTINGUISHER [FE] [Symbol]
- SUITE [Symbol]

ARCHITECTURE
ENGINEERING
PLANNING
INTERIOR DESIGN
COMMISSIONING

144 Fore Street/P.O. Box 618
Portland, Maine 04104
tel. (207) 772-3846
fax. (207) 772-1070
www.smrtinc.com



MAINE MEDICAL CENTER
IR READING ROOM AND U/S RENOVATION
PORTLAND, MAINE

ISSUED FOR PERMITTING
3-31-17

ISSUED FOR PERMITTING 3-31-17
REV DESCRIPTION DATE CURRENT ISSUE STATUS:

GRAPHIC SCALE: 0 1" = 8'-0"

SCALE: 1/8" = 1'-0"

PROJECT MANAGER: DMV
JC/DRAWN BY: MDR
A/E OF RECORD: DMV
CAD FILE: A-100-15201
PROJECT NO.: 15201
DATE: 15201

SHEET TITLE:
PARTIAL FACILITY AND
CODE COMPLIANCE
PLAN

SHEET NO.
A-100