

GENERAL ARCHITECTURAL NOTES

- THE DRAWINGS USE A SYSTEM OF KEYED NOTES ON PLANS, ELEVATIONS AND DETAILS. INSTRUCTIONS FOR SPECIFIC COMPONENTS OF THE WORK ARE KEYS TO THE DRAWINGS. BUILDING SYSTEMS (PARTITIONS, ROOF & FOUNDATION) ARE KEYS TO FLOOR PLANS, WALL SECTIONS, ROOF PLAN AND OTHER DETAILS AS APPROPRIATE.
- MAINTAIN MINIMUM MANEUVERING CLEARANCES AT DOORS IN COMPLIANCE WITH THE ADA ACCESSIBILITY GUIDELINES (ADAAG), INCLUDING BUT NOT LIMITED TO THE FOLLOWING EXCERPT FROM 2010 ADA STANDARDS FOR ACCESSIBLE DESIGN:
 • BARRIER-FREE CLEARANCES ARE GIVEN. THESE CLEAR DIMENSIONS SHALL BE MAINTAINED IN CASES OF DISCREPANCY.
 • ALL DIMENSIONS GIVEN FOR FIXTURE AND ACCESSORY LOCATIONS ARE CLEAR DIMENSIONS FROM FINISHED SURFACES, UNLESS NOTED OTHERWISE. COORDINATE ACTUAL DIMENSIONS WITH WALL CONSTRUCTION AND FINISHES.
 • LOCATE ALL CONTROLS, FLUSH VALVES, SHUTOFFS AND SIMILAR ITEMS IN ACCORDANCE WITH THE LATEST VERSION OF THE ADA ACCESSIBILITY GUIDELINES (ADAAG).
 • SOME ITEMS MAY INDICATE A RANGE IN MOUNTING HEIGHT. MAINTAIN A CONSISTENT MOUNTING HEIGHT, WITHIN THE GIVEN RANGE, THROUGHOUT THE PROJECT, UNLESS NOTED OTHERWISE.
- MAINTAIN CLEAR DIMENSIONS IN ACCORDANCE WITH THE LATEST VERSION OF THE ADA ACCESSIBILITY GUIDELINES (ADAAG).
- ALL GRAB BAR COMPONENTS SHALL BE ABLE TO WITHSTAND A LOAD OF 250LBS AT ANY POINT.
- INSTALL BLOCKING BEHIND ALL SURFACE-APPLIED FIXTURES, TRIM, GRAB BARS, SHELVES, CHAIR RAILS, PICTURE RAILS, BASE MOLDINGS, TACK OR MARKER BOARDS, WINDOW TREATMENT, WALL OR BASE CABINETS OR COUNTERS, AND MISCELLANEOUS ACCESSORIES MOUNTED ON STUD WALLS.
- ALL EXPOSED WOOD NOT INDICATED TO BE PAINTED SHALL BE NATURAL FINISH (CLEAR).
- FLOORING AND FLOOR FINISHES SHALL BE INSTALLED TO A MAXIMUM DIFFERENTIAL OF 1/16" BETWEEN DISSIMILAR MATERIALS. PROVIDE TRANSITION STRIPS OR THRESHOLDS (1/2" MAXIMUM) OF SAME MATERIAL AS FLOORING AND/OR AS NOTED ON THE DRAWINGS, BETWEEN DISSIMILAR FLOORING MATERIALS
- PATCH AND LEVEL EXISTING SUBFLOORS TO RECEIVE NEW FLOOR FINISHES AS INDICATED IN THE ROOM FINISH SCHEDULE.
- ALL EXPOSED PIPES UNDER LAVATORIES AND SINKS SHALL BE INSULATED OR OTHERWISE CONFIGURED TO PROTECT AGAINST CONTACT.
- INSTALL 2 COAT HOOKS CENTERED ON THE INSIDE OF SINGLE USER TOILET ROOM DOORS, MOUNTED AT 48" AFF AND 60" AFF.

GENERAL PATCHING AND REPAIRING NOTES

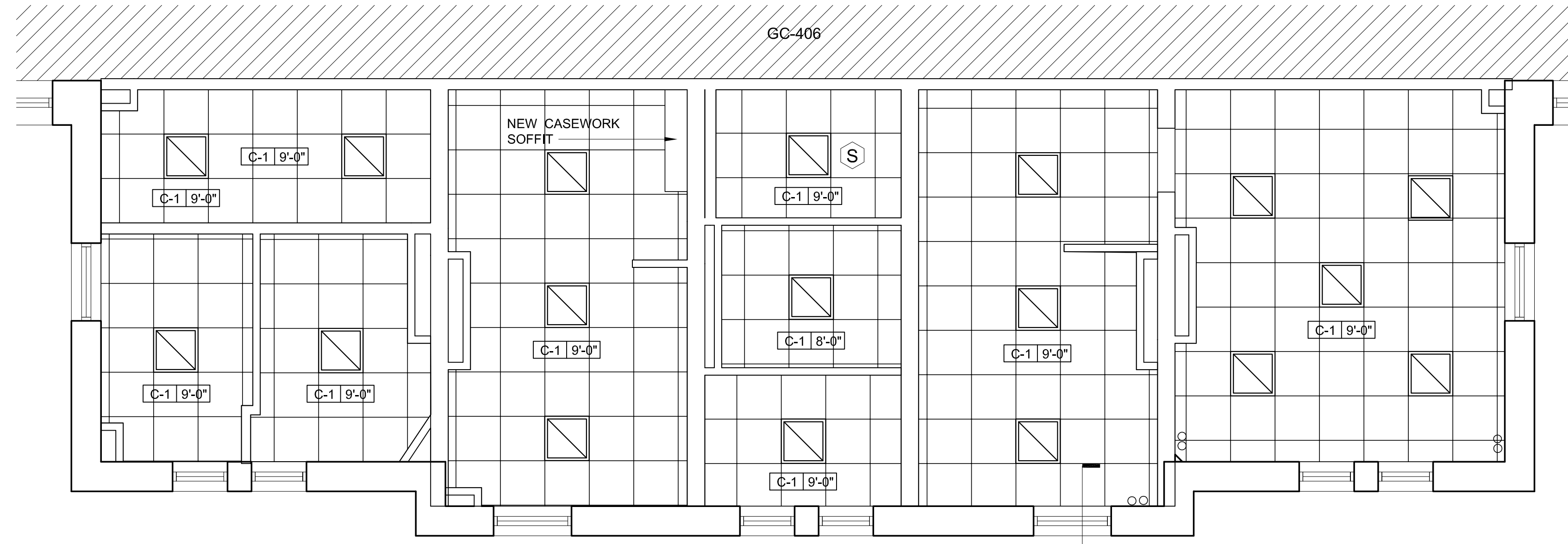
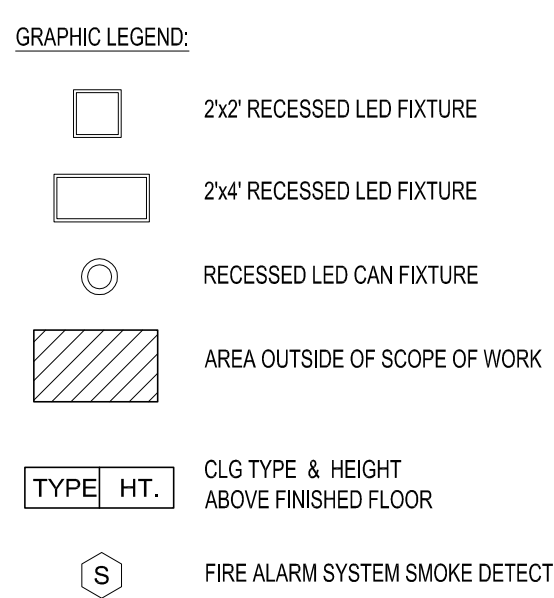
- WHERE NEW CONSTRUCTION EITHER INFILLS OR ABUTS EXISTING CONSTRUCTION, THE FINISHED FACES SHALL ALIGN, AND THE SURFACES SHALL BE FINISHED TO MATCH.
- AFTER CUTTING, FITTING, OR REMOVAL OF BUILDING COMPONENTS, ANY RESULTING HOLES SHALL BE PATCHED. SUCH PATCHES SHALL BE FLUSH WITH ADJACENT SURFACES AND FINISHED TO MATCH.
- MAINTAIN FIRE RATINGS, SMOKE RATINGS, AND ACOUSTICAL RATINGS.
- PROVIDE METAL COVER PLATES AT ALL ABANDONED ELECTRICAL DEVICES, FINISHED TO MATCH WALL.

PLAN GENERAL NOTES

- WORK FROM GIVEN DIMENSIONS. IN GENERAL, LARGE-SCALE DETAILS TAKE PRECEDENCE OVER SMALLER SCALE PLANS, ELEVATIONS AND BUILDING SECTIONS. NOTIFY THE ARCHITECT OF ANY DIMENSIONAL DISCREPANCIES PRIOR TO COMMENCING THE WORK, AND DO NOT BEGIN WORK UNTIL SUCH DISCREPANCIES ARE RESOLVED BY THE ARCHITECT.
- DO NOT SCALE THE DRAWINGS.
- DIMENSIONS INDICATED AS "CLEAR" SHALL BE MAINTAINED IN CASES OF DISCREPANCY.
- UNLESS NOTED OTHERWISE, THE LOCATION OF DOOR FRAMES SHALL BE:
 • CMU PARTITIONS: 4" FROM THE ADJACENT WALL TO THE HINGE SIDE OF THE ROUGH OPENING.
 • METAL STUD PARTITIONS: 4" FROM THE ADJACENT WALL STUDS TO THE HINGE SIDE OF THE ROUGH OPENING.
- MASONRY OPENING OR ROUGH OPENING DIMENSIONS INDICATED ARE NOMINAL DIMENSIONS AND MAY NOT MATCH THE ACTUAL DIMENSIONS OF THE PRODUCT. COORDINATE ALL MASONRY OPENINGS AND ROUGH OPENINGS WITH THE ACTUAL WINDOW UNIT, DOORFRAME, CURTAIN WALL/STOREFRONT, OR LOUVER SIZES AND REQUIREMENTS.
- INSTALL BLOCKING BEHIND ALL SURFACE-APPLIED FIXTURES, TRIM, GRAB BARS, SHELVES, CHAIR RAILS, PICTURE RAILS, BASE MOLDINGS, TACK OR MARKER BOARDS, WINDOW TREATMENT, WALL OR BASE CABINETS OR COUNTERS, AND MISCELLANEOUS ACCESSORIES MOUNTED ON STUD WALLS.
- FOR EXISTING WALLS SUPPORTING NEW ITEMS, VERIFY THE WALL TYPE PRIOR TO PERFORMING THE WORK TO DETERMINE APPROPRIATE TYPE OF ANCHOR UNLESS INDICATED OTHERWISE. CONSULT ARCHITECT FOR CLARIFICATION IF NEEDED.
- INSTALL FIBERGLASS MAT BOARD (FMB) IN TOILET ROOMS, JANITOR'S CLOSETS, SHOWER ROOMS, LOCKER ROOMS, KITCHENS, DARKROOMS, ALL WALL AREAS WITHIN 8 FEET OF SINKS, AND OTHER DAMP OR HIGH HUMIDITY AREAS.
- PROVIDE ACOUSTICAL INSULATION AT ALL INTERIOR STUD WALL ASSEMBLIES UNLESS NOTED OTHERWISE.
- IDENTIFY ALL FIRE-RATED PARTITIONS BY STENCILING THE RATING ON EACH SIDE OF THE RATED WALLS ABOVE THE CEILING LINE WITH 4" HIGH LETTERS IN RED OR ORANGE PAINT; EACH RATED WALL SHALL BE IDENTIFIED AT LEAST ONCE AND AT A SPACING NOT GREATER THAN 12 FEET ON CENTER.
- DIMENSIONAL CONTROL:
 EXTERIOR DIMENSIONS ARE TO:
 • CENTERLINE OF COLUMN
 • FACE OF MASONRY
 • FACE OF STUD
 • FACE OF CONCRETE
 • CENTERLINE OF WINDOW OPENING
 • ROUGH OPENING
 • MASONRY OPENING
 INTERIOR DIMENSIONS ARE TO:
 • CENTERLINE OF COLUMN
 • FACE OF MASONRY
 • FACE OF STUD
 • FACE OF EXISTING FINISH MATERIAL
 EXISTING DIMENSIONS SHALL BE VERIFIED. REPORT ANY DISCREPANCIES TO THE ARCHITECT.

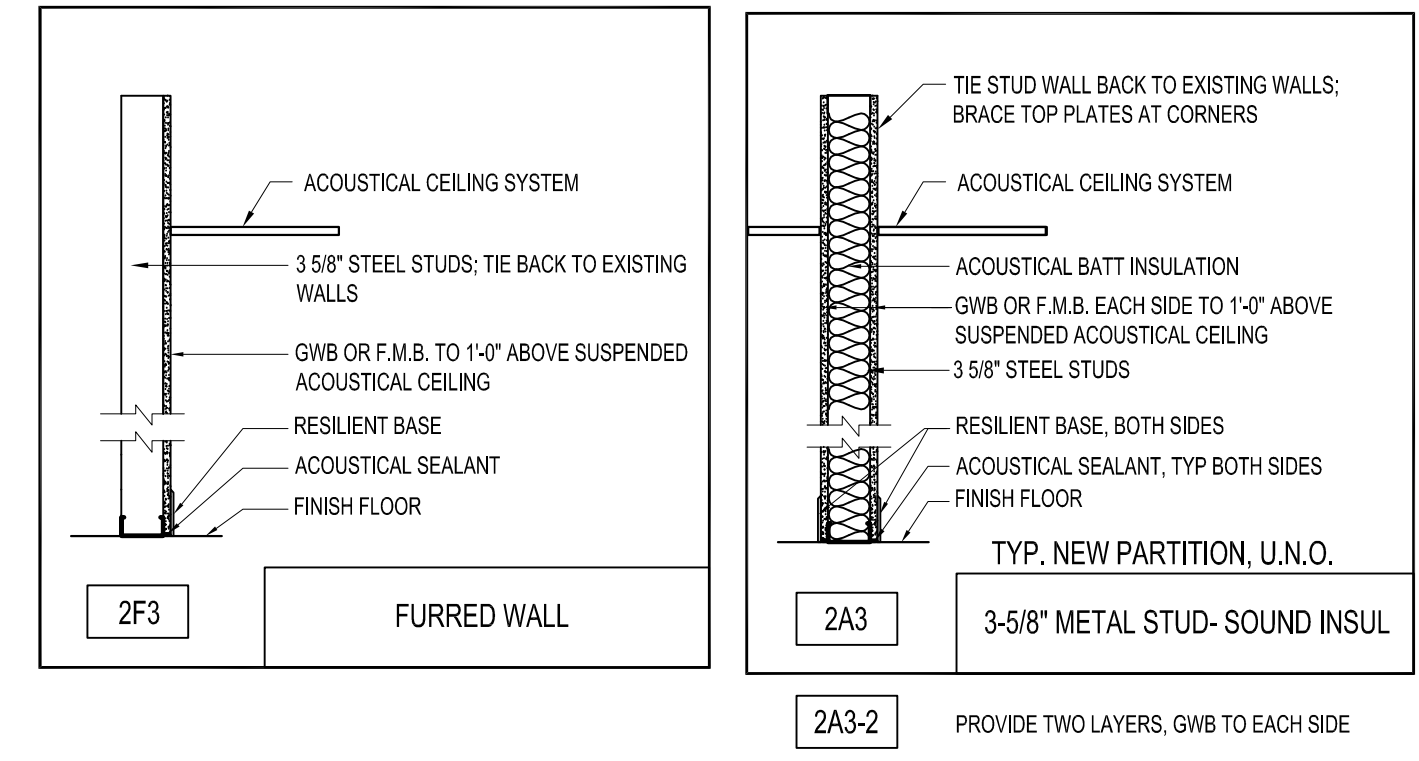
CEILING NOTES

- CEILING PLANS DO NOT SHOW EVERY FIXTURE OR COMPONENT. REFER TO ELECTRICAL, PLUMBING, MECHANICAL AND STRUCTURAL DRAWINGS FOR EXTENT OF ALL CEILING PENETRATIONS AND INSTALLATIONS AND COORDINATE PRIOR TO INSTALLATION.
- CENTER GRID LAYOUT IN ALL ROOMS UNLESS NOTED OTHERWISE.
- ALL COMPONENTS MOUNTED IN OR BELOW A SUSPENDED ACOUSTIC CEILING SHALL BE CENTERED IN THE CEILING TILE OR IN THE 2X2 PORTION OF REGULAR CEILING TILES, UNLESS NOTED OTHERWISE. THIS SHALL INCLUDE, BUT NOT BE LIMITED TO, LIGHT FIXTURES, DIFFUSERS, SPEAKERS, SMOKE DETECTORS, AND SPRINKLER HEADS.
- PRIOR TO THE INSTALLATION OF CEILINGS, ALLOW FOR AN ABOVE-CEILING INSPECTION OF COMPONENTS THAT WILL NOT BE VISIBLE WHEN THE CEILINGS HAVE BEEN INSTALLED, INCLUDING INSPECTION OF FIRE, SMOKE, AND ACOUSTICAL SEPARATIONS.

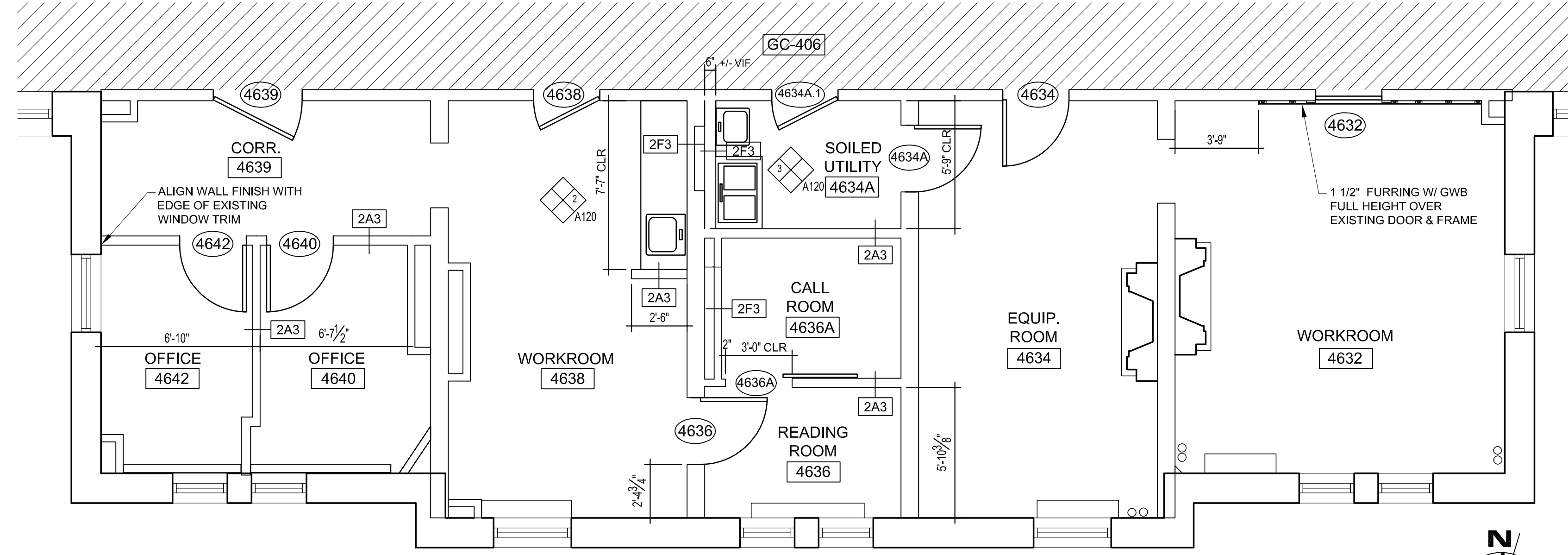
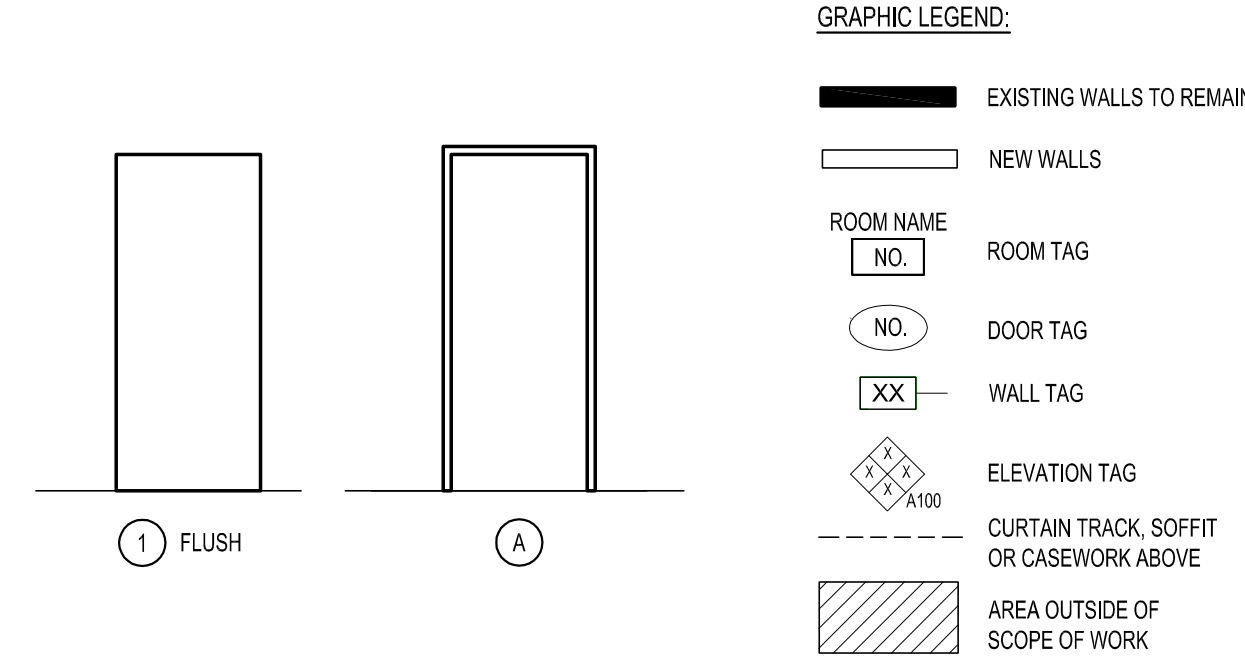


2 REFLECTED CEILING PLAN
 1/4" = 1'-0"

DOOR / FRAME / HARDWARE SCHEDULE											
NO.	ROOM NAME	SIZE	DOOR		FRAME			FUNCTION	HARDWARE	FIRE RATING	REMARKS
			TYPE	MAT.	TYPE	MAT.	DETAILS				
4632	WORKROOM	EXISTING TO REMAIN +/- 3'-0" x 8'-0"		WOOD		WOOD			REMOVE EXISTING KNOBS; ADD STAINLESS COVER PLATE AT CORRIDOR.		DOOR TO BE MADE INACTIVE
4634	EQUIP. ROOM	EXISTING TO REMAIN +/- 3'-0" x 8'-0"		WOOD		WOOD					
4634A	SOILED UTILITY	3'-0" x 7'-0"	I	WOOD	A	HM		PASSAGE	HINGES; CLOSER; ARMOR PLATE; PUSH PLATE; PULL; SILENCERS		
4634A.I	SOILED UTILITY	EXISTING TO REMAIN +/- 3'-0" x 8'-0"		WOOD		WOOD		EXISTING TO REMAIN	ADD CLOSER		
4636	READING ROOM	3'-0" x 7'-0"	I	WOOD	A	HM		PASSAGE	HINGES; LEVER SET		
4636A	CALL ROOM	3'-4" x 7'-0"		WOOD				PASSAGE	BARN DOOR		
4638	WORKROOM	EXISTING TO REMAIN +/- 3'-0" x 8'-0"		WOOD		WOOD					
4639	CORR.	EXISTING TO REMAIN +/- 3'-0" x 8'-0"		WOOD		HM					
4640	OFFICE	3'-0" x 7'-0"	I	WOOD	A	HM		OFFICE	LEVER LOCKSET; HINGES; DOOR STOP; COAT HOOK; SILENCERS		
4642	OFFICE	3'-0" x 7'-0"	I	WOOD	A	HM		OFFICE	LEVER LOCKSET; HINGES; DOOR STOP; COAT HOOK; SILENCERS		



3 PARTITION TYPES



1 FLOOR PLAN
 1/4" = 1'-0"

DOOR & FRAME TYPES