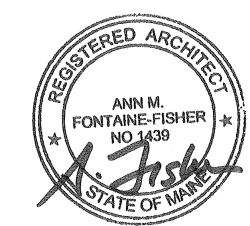


22 Bramhall Street
Portland, Maine

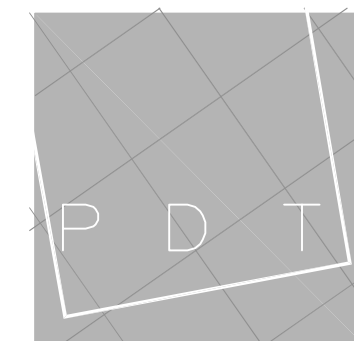
MAINE MEDICAL CENTER MGB-4 Neuroscience Area Renovation

PERMIT SET 02/10/2017

PDT Project No.
16122



ARCHITECT:



ARCHITECTS
49 DARTMOUTH STREET
PORTLAND, MAINE 04101
207-775-1059
www.pdtarchs.com

CM:

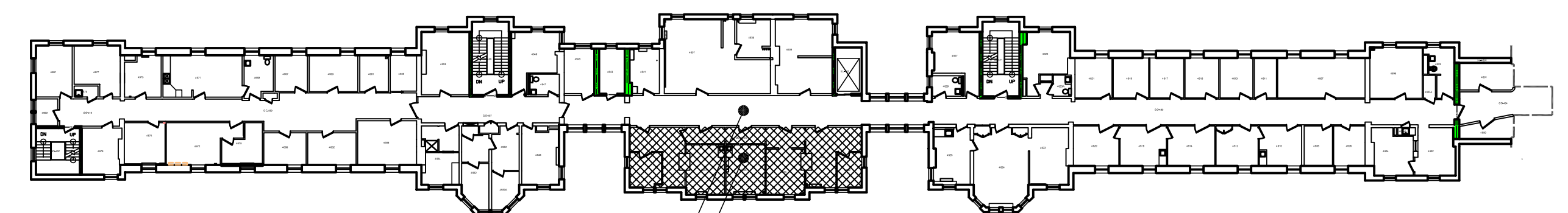
HEBERT CONSTRUCTION
9 GOULD ROAD
LEWISTON, MAINE 04240
207-783-2091

LIST OF DRAWINGS

ARCHITECTURAL DRAWINGS:

A000	COVER SHEET, KEY PLAN, CODE SUMMARY
ADI00	DEMOLITION PLAN, GRAPHIC LEGEND & NOTES
AI00	FLOOR PLAN, RCP, DOOR SCHEDULE, PARTITION TYPES, NOTES & LEGENDS
AI20	RCP, F & E PLAN, DETAILS, NOTES & LEGEND
A600	INTERIOR MATERIALS LEGEND, FINISH SCHEDULE, OUTLINE SPECIFICATION

CODE SUMMARY			
APPLICABLE CODES & GUIDELINES			
Building Code:		IBC 2009 (per MUBEC)	
Life Safety Code:		NFPA 101 - 2009	
FIRE PROTECTION			
Supervised - Automatic Sprinkler System			
Monitored - Fire Alarm System			
BUSINESS (B) Existing			
	IBC	NFPA	
OCCUPANCY LOAD	Table 1004.1.1 100 sf/person	Table 7.3.1.2 100 sf/person	
CONSTRUCTION CLASSIFICATION	602.3 Type III B		Type III (200)
NUMBER OF EXITS	Table 1021.1 2 Exits for occupant load of 500 or less	39.2.4.1	Not less than two separate exits shall be accessible from every part of every story
TRAVEL DISTANCE TO EXITS	1016.1 Max. 300' w/ sprinkler	39.2.6.3	Max. 300' w/ supervised sprinkler system
REMOVEDNESS OF EXITS		7.5.1.3.2	Distance between exits not less than 1/2 length of max. overall diagonal dimension of bldg. or area served.
COMMON PATH OF TRAVEL	1014.3 Max. 100'	39.2.5.3.1	Max. 300' w/ sprinkler
DEAD END LIMIT	1018.4 50 ft.	39.2.5.2	50 ft.
CORRIDORS	Table 1018.1 No fire rating required w/ sprinkler system	39.3.6	No requirement



NOTE: EXISTING EXIT ACCESS CORRIDORS AND EXITS ARE NOT WITHIN THE SCOPE OF THE PROJECT.
AREA OF WORK
NEUROSCIENCE DEPT.

KEY PLAN
MGB-4 - BRAMHALL CAMPUS
BUSINESS OCCUPANCY