

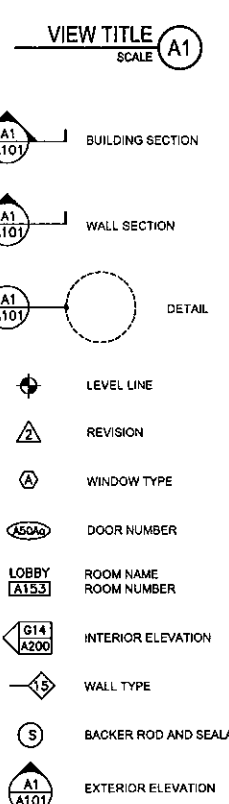
# MAINE MEDICAL CENTER BRAMHALL MAMMOGRAPHY RENOVATIONS

PORTLAND, MAINE

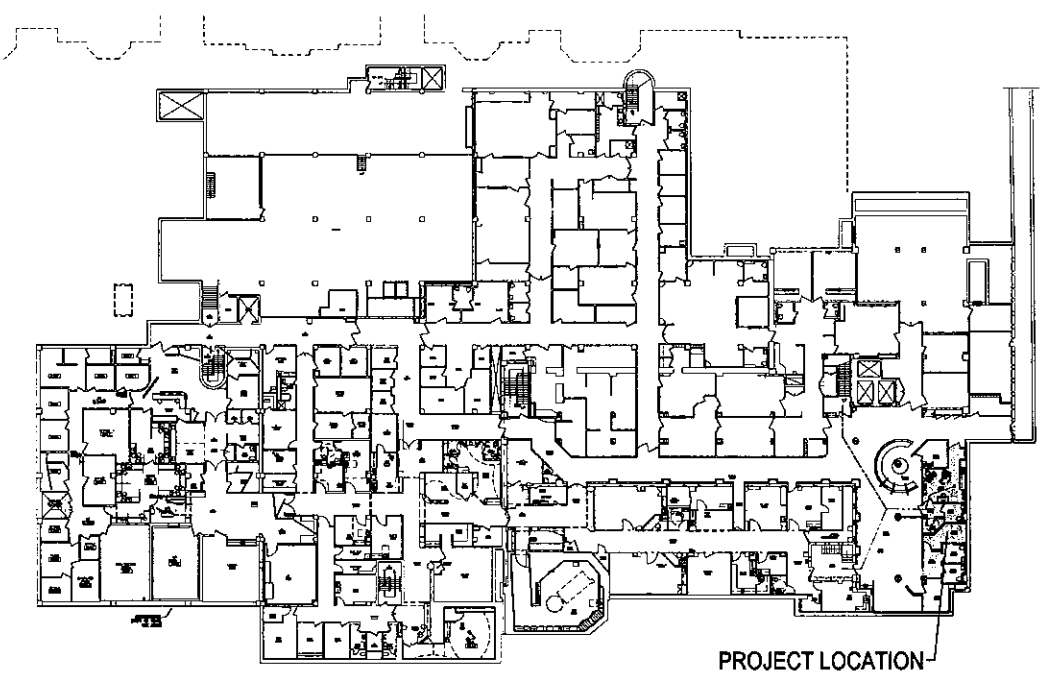
**GENERAL NOTES:**

- FIELD VERIFY ALL DIMENSIONS AND LAYOUT PRIOR TO PROCEEDING WITH WORK. NOTIFY ARCHITECT IN WRITING OF ANY DISCREPANCIES OR INCONSISTENCIES. FAILURE TO REPORT ANY DISCREPANCIES WITHIN THESE CONSTRUCTION DOCUMENTS TO THE ARCHITECT WILL NOT BE GROUNDS FOR ADDITIONAL COST OR CHANGE ORDERS.
- CONTRACTOR SHALL BE RESPONSIBLE FOR PROVIDING ALL MATERIALS (UNLESS NOTED OTHERWISE) AND WORKMANSHIP IN ACCORDANCE WITH FEDERAL, STATE, CITY, AND LOCAL BUILDING CODES AND THEIR REQUIREMENTS.
- CONTRACTOR AND ALL TRADES SHALL NOTE REQUIREMENTS OF "GENERAL NOTES" ON ALL SHEETS.
- EACH TRADE TO PROVIDE SMOKE OR FIRE SEALANT AT PENETRATIONS AS REQUIRED FOR WALL TYPE (UNLESS NOTED OTHERWISE). ALL SEALANT, FIRE STOPPING AND SMOKE STOPPING ASSEMBLIES SHALL BE U.L. RATED.
- REFER TO ALL CONSTRUCTION DOCUMENTS FOR REQUIREMENTS WHICH MAY AFFECT THE WORK IN ANOTHER AREA AND/OR DISCIPLINE AND COORDINATE.
- PROVIDE BLOCKING IN WALLS AS NECESSARY WHERE CASEWORK, FURNITURE, SHELVES, HANDRAILS, AND/OR OTHER MISC. EQUIPMENT IS LOCATED.
- DO NOT SCALE CONSTRUCTION DOCUMENTS.
- PROVIDE MEANS "FURNISH AND INSTALL"

A/C	AIR CONDITIONING		
ACPLAS	ACOUSTICAL PLASTER		
ACT	ACOUSTIC CEILING TILE		
AF	ABOVE FINISHED FLOOR		
AP	ACCESS PANEL		
BCE	BOTTOM CHORD EXTENSION		
BD	BOARD		
BLP	BORROWED LIGHT PANEL		
BO	BOTTOM OF		
BOF	BOTTOM OF FOOTING		
BOS	BOTTOM OF STEEL		
BS	BOTH SIDES		
BSE	BSBRICK SHELF ELEVATION		
C	CHANNEL		
CB	CATCH BASIN; CHALKBOARD		
CFM	CUBIC FEET PER MINUTE		
CJ	CONTROL JOINT; CONSTRUCTION JOINT		
CLG	CEILING		
CMU	CONCRETE MASONRY UNIT		
CT	CERAMIC TILE		
CUH	CABINET UNIT HEATER		
DF	DRINKING FOUNTAIN		
DR	DISPLAY RACK		
DW	DISHWASHER		
EF	EXHAUST FAN; EACH FACE		
EJ	EXPANSION JOINT		
EPDM	ETHYLENE PROPYLENE DIENE MONOMER		
EW	EACH WAY		
EWC	ELECTRIC WATER COOLER		
FB	FLAT BAR		
FBO	FURNISHED BY OTHERS		
FCO	FLOOR CLEAN-OUT		
FD	FLOOR DRAIN		
FE	FIRE EXTINGUISHER		
FF	FINISHED FLOOR; FAR FACE		
FO	FRAMED OPENING		
FS	FAR SIDE		
GB	GRAB BAR		
GC	GENERAL CONTRACTOR		
GDT	GYPSON DROP-IN TILE		
GWB	GYPSON WALL BOARD		
H	HORIZONTAL		
HC	HANDICAPPED; HOLLOW CORE		
HM	HOLLOW METAL		
HU	HEAT RECOVERY UNIT		
HT	HEIGHT		
H&V	HEATING AND VENTILATING		
HVAC	HEATING, VENTILATING AND AIR CONDITIONING		
IF	INSIDE FACE		
IJ	ISOLATION JOINT		
INV	INVERT		
JS	JOIST SUBSTITUTE		
L	ANGLE		
LLH	LONG LEG HORIZONTAL		
LLV	LONG LEG VERTICAL		
LP	LIGHTING PANEL; LIQUIFIED PROPANE		
MB	MARKER BOARD		
MDO	MEDIUM DENSITY OVERLAY		
MO	MASONRY OPENING		
MR	MOISTURE-RESISTANT		
MUA	MAKE-UP AIR		
N	NOSING		
NIC	NOT IN CONTRACT		
NS	NEAR SIDE		
NTS	NOT TO SCALE		
OC	ON CENTER		
OF	OUTSIDE FACE		
OH	OVERHEAD		
PA	PUBLIC ADDRESS		
PAF	POWDER-ACTUATED FASTENER		
PL	PLATE		
PLAM	PLASTIC LAMINATE		
PLF	POUNDS PER LINEAR FOOT		
PP	POWER PANEL		
PSF	POUNDS PER SQUARE FOOT		
PSI	POUNDS PER SQUARE INCH		
PT	PRESSURE-TREATED		
PVC	POLYVINYL CHLORIDE		
PWP	PLASCORE WALL PANEL		
R	RISER; RADIUS		
RB	RESILIENT BASE		
RD	ROOF DRAIN		
RO	ROUGH OPENING		
RR	RUB-RAIL		
ACT	SUSPENDED ACOUSTIC TILE CEILING		
SBO/BO	SUPPLIED BY OWNER INSTALLED BY CONTRACTOR		
SC	SOLID CORE		
SCHD	SCHEDULE		
SF	SQUARE FOOT; SUPPLY FAN		
SK	SHEAR KEY		
SN	SANITARY NAPKIN (DISPENSER)		
SP	SPACES		
SS	STAINLESS STEEL		
		T	TREAD
		TB	TACKBOARD
		T&B	TOP AND BOTTOM
		TBM	TEMPORARY BENCHMARK
		TCE	TOP CHORD EXTENSION
		TJ	TIE JOIST
		TO	TOP OF
		TOC	TOP OF CONCRETE
		TOF	TOP OF FOOTING
		TOM	TOP OF MASONRY
		TOP	TOP OF PIER
		TOS	TOP OF STEEL; TOP OF SLAB
		TOW	TOP OF WALL
		TP	TOILET PAPER (DISPENSER)
		TS	
		UH	UNIT HEATER
		UNO	UNLESS NOTED OTHERWISE
		V	VENT PIPE; VERTICAL
		VB	VAPOR BARRIER
		VCT	VINYL COMPOSITION TILE
		VP	VISION PANEL
		VTR	VENT THROUGH THE ROOF
		W	WITH
		WC	WATER CLOSET
		WF	WIDE FLANGE
		WH	WATER HEATER
		W/O	WITHOUT
		WP	WALL PROTECTION
		WS	WEB STIFFENER
		WWF	WELDED WIRE FABRIC



**SITE LOCATION MAP: NDF BASEMENT**



**APPLICABLE CODES:**

- GENERAL:**
- INTERNATIONAL BUILDING CODE (IBC) 2009 EDITION
  - NFPA LIFE SAFETY CODE 101, 2009 and 2009 EDITION
  - 2009 ADA STANDARDS FOR ACCESSIBLE DESIGN
  - NFPA 1 Uniform Fire Code, 2006 and 2009
  - GUIDELINES FOR DESIGN AND CONSTRUCTION OF HEALTH CARE FACILITIES, THE FACILITY GUIDELINES INSTITUTE, 2010 EDITION.
- MECHANICAL:**
- ASHRAE STANDARD 62.1-2007 - VENTILATION FOR ACCEPTABLE INDOOR AIR QUALITY
  - ASHRAE STANDARD 90.1-2007 - ENERGY STANDARD FOR BUILDINGS EXCEPT LOW-RISE RESIDENTIAL BUILDINGS, EDITIONS WITHOUT ADDENDA
  - ME ELEVATOR CODE - ASME A17.1, 2007 EDITION.
  - NFPA 90A - STANDARD FOR THE INSTALLATION OF AIR CONDITIONING AND VENTILATION SYSTEMS, 2009 EDITION.
  - 2009 INTERNATIONAL ENERGY CONSERVATION CODE.
  - NFPA 99 - STANDARD FOR HEALTH CARE FACILITIES - 1998 and 2005 EDITION.
  - BOILER CODE- ASME BPC, SECTION 1-1(1998, 1999)
  - MUBEC (MAINE UNIFORM BUILDING & ENERGY CODE)
- PLUMBING:**
- MAINE STATE INTERNAL PLUMBING CODE, LATEST EDITION (BASED ON 2009 (APMD))
  - NFPA 54 - NATIONAL FUEL GAS CODE, 1999 and 2009 EDITION
  - NFPA 13 - INSTALLATION OF SPRINKLER SYSTEMS - 1999 and 2007 EDITION.
- ELECTRICAL:**
- NFPA 70 NATIONAL ELECTRICAL CODE 2008 EDITION.
  - NFPA 72 NATIONAL FIRE ALARM CODE 2007 EDITION
  - NFPA 110 STANDARD FOR EMERGENCY AND STANDBY POWER SYSTEMS, 2005 EDITION.

**CODE COMPLIANCE STRATEGY NOTES:**

- BUILDING CONSTRUCTION TYPE: II (2,2,2)
- FULLY SPRINKLERED
- LIFE SAFETY CODE OCCUPANCY: AMBULATORY HEALTHCARE
- MAX PATH OF TRAVEL = 150 FEET
- DEAD END LIMIT @ NEW CORRIDOR = 30'-0" (NFPA 101: 19.2.5.2)
- COMMON PATH OF TRAVEL LIMIT= NO REQUIREMENT(NFPA 101: TABLE A.7.6)
- A U.L. LISTED THROUGH-PENETRATION FIRESTOP SYSTEM SHALL BE PROVIDED AT ALL PENETRATIONS REQUIRED BY ANY TRADE, THROUGH A FIRE OR SMOKE RATED ASSEMBLY. THE U.L. LISTED THROUGH-PENETRATION FIRESTOP SYSTEM PROVIDED SHALL MEET THE RATING REQUIREMENTS OF THE FIRE OR SMOKE RATED ASSEMBLY PENETRATED.
- WHERE MULTIPLE CODE EDITIONS ARE NOTED, CONTRACTOR TO PROVIDE WORK IN ACCORDANCE TO THE MORE STRINGENT.

**DRAWING LIST**

<b>GENERAL</b>	
G1001	COVER SHEET
<b>ARCHITECTURAL</b>	
A101	FLOOR, DEMOLITION, AND REFLECTED CEILING PLAN

REV	DESCRIPTION	DATE
0	ISSUED FOR PERMITTING	1/30/17

**ISSUED FOR PERMITTING**  
1-30-17

CURRENT ISSUE STATUS:

**PROJECT NORTH:**  
SMRT Architects and Engineers  
144 Fore Street  
Portland, Maine 04104  
1.877.700.7578  
www.smrtinc.com

**MAINE MEDICAL CENTER  
BRAMHALL MAMMOGRAPHY  
RENOVATIONS**  
PORTLAND, MAINE

**COVER SHEET**

SHEET TITLE:

SCALE: AS NOTED

PROJECT MANAGER: DJV	PROJECT NO: 18204
DATE OF RECORD: DJV	
JOB CAPTAIN: MOR	
DRAWN BY: MOR	
SMRT FILE: G1001-18204	SHEET No. <b>G1001</b>