

**DEMOLITION NOTES:**

- COORDINATE EXTENT OF DEMOLITION DESCRIBED WITH THE REQUIREMENTS OF OTHER WORK DESCRIBED IN THE CONSTRUCTION DOCUMENTS AND THE CONTRACTOR'S SUBMITTALS, AND WITH LOCATIONS OF EXISTING FINISHES TO REMAIN.
- THE CONTRACTOR SHALL PROTECT FROM DAMAGE, ALL EXISTING OR NEW FINISHES, MATERIALS AND EQUIPMENT, WHICH ARE NOT DESCRIBED AS BEING REMOVED OR DEMOLISHED.
- THE CONTRACTOR SHALL BE RESPONSIBLE TO REPLACE ALL EXISTING OR NEW FINISHES, MATERIALS AND EQUIPMENT, DAMAGED BY ANY WORK REQUIRED BY AND ASSOCIATED WITH THE CONSTRUCTION DOCUMENTS, WHICH IS NOT DESCRIBED AS BEING REMOVED OR DEMOLISHED.
- REFER TO ELECTRICAL PLANS FOR ELECTRICAL AND LIGHTING SYSTEMS REMOVALS.
- REFER TO MECHANICAL PLANS FOR MECHANICAL SYSTEMS REMOVALS.
- TEMPORARILY REMOVE EXISTING CEILING SYSTEMS TO REMAIN AS REQUIRED FOR INSTALLATIONS AND REMOVALS OF MECHANICAL, ELECTRICAL AND PLUMBING SYSTEMS. RE-INSTALL CEILING SYSTEMS IN ORIGINAL LOCATION AND CONDITION WHEN WORK IS COMPLETE.
- TAKE CARE WHEN REMOVING CUSTOM HARDWOOD CHAIR RAIL, TYPICAL. SALVAGE FOR RE-INSTALLATION WHERE POSSIBLE.
- REMOVE EXISTING WALL MOUNTED ACCESSORIES AT LOCATIONS WHERE WALLS ARE DEMOLISHED. TAKE CARE DURING REMOVAL AND COORDINATE WITH OWNER FOR ITEMS TO BE SALVAGED.

**DEMOLITION KEYED NOTES:**

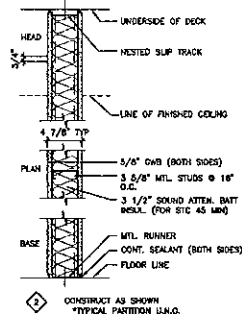
- REMOVE EXISTING PARTITION COMPLETE.
- REMOVE EXISTING DOOR, FRAME, AND HARDWARE COMPLETE.
- REMOVE EXISTING FURNITURE/CASEWORK & EQUIPMENT COMPLETE. SALVAGE AND RETURN TO OWNER.
- CUT BACK CEILING TO ALIGN WITH NEW WALL. SEE FLOOR PLAN FOR LOCATION.
- CUT BACK EXISTING FLOORING TO ALIGN WITH NEW WALL. SEE FLOOR PLAN FOR LOCATION.
- REMOVE EXISTING FLOOR SYSTEM COMPLETE. PREPARE FOR INSTALLATION OF NEW FLOOR.

**FLOOR PLAN NOTES:**

- SEE G1001 FOR GENERAL PROJECT NOTES, LEGENDS, AND ABBREVIATIONS.
- SEE G1002 FOR GENERAL MOUNTING HEIGHTS, TOP OF WALL DETAILS, AND PARTITION TYPES.
- CONTRACTOR IS RESPONSIBLE FOR REVIEWING CODE COMPLIANCE PLANS AND NOTIFYING THE ARCHITECT OF CONFLICTS BETWEEN WHAT IS IN THE FIELD AND ON THE CODE DOCUMENTS.
- DIMENSIONS ARE FACE OF CONCRETE, FACE OF MASONRY AND CENTERLINE OF STUD, UNLESS NOTED OTHERWISE.
- DOOR JAMBS (HINGE SIDE) SHALL BE 6" FROM CORNER IN STUD PARTITIONS AND 8" FROM CORNER IN MASONRY PARTITIONS UNLESS NOTED OTHERWISE.
- REFER TO DETAILS FOR ADDITIONAL DIMENSIONING INFORMATION.
- REFER TO ENLARGED PLANS FOR PARTITION TYPES AND DIMENSIONS IN AREAS WHICH ARE DETAILED AT A LARGER SCALE.
- FURNITURE AND OWNER PROVIDED EQUIPMENT ARE INDICATED BY DASHED LINE TYPE.
- CONTRACTOR IS RESPONSIBLE FOR THE COORDINATION OF OWNER PROVIDED EQUIPMENT INCLUDING BUT NOT LIMITED TO DIMENSIONAL INFORMATION, AND MECHANICAL, ELECTRICAL, AND PLUMBING REQUIREMENTS.
- PARTITION TYPE 2 IS TYPICAL UNLESS NOTED OTHERWISE.
- ALL WALLS WITHIN PROJECT SCOPE TO RECEIVE NEW PAINT TO MATCH EXISTING. CONFIRM WITH OWNER.

**FLOOR PLAN KEYED NOTES:**

- OWNER PROVIDED FURNITURE.
- WIRE DUCT TO CONCEAL WIRING.
- WALL MOUNTED COOLING UNIT.
- RELOCATED OR NEW COUNTER FOR MONITORS.
- LOCKERS BY OWNER.
- RELOCATED BENCH SURFACE.
- PROVIDE NEW FLOORING TO MATCH EXISTING.
- OWNER PROVIDED EQUIPMENT, CONTRACTOR TO COORDINATE FINAL LAYOUT WITH VENDOR SITE SPECIFIC DRAWINGS.
- PROVIDE NEW 3'-0"x7'-0" SOLID CORE WOOD DOOR TO MATCH EXISTING AND HOLLOW METAL FRAME. PASSAGE HARDWARE WITH OCCUPY/UNOCCUPY THUMB TURN. CONFIRM HARDWARE NEEDS WITH OWNER.

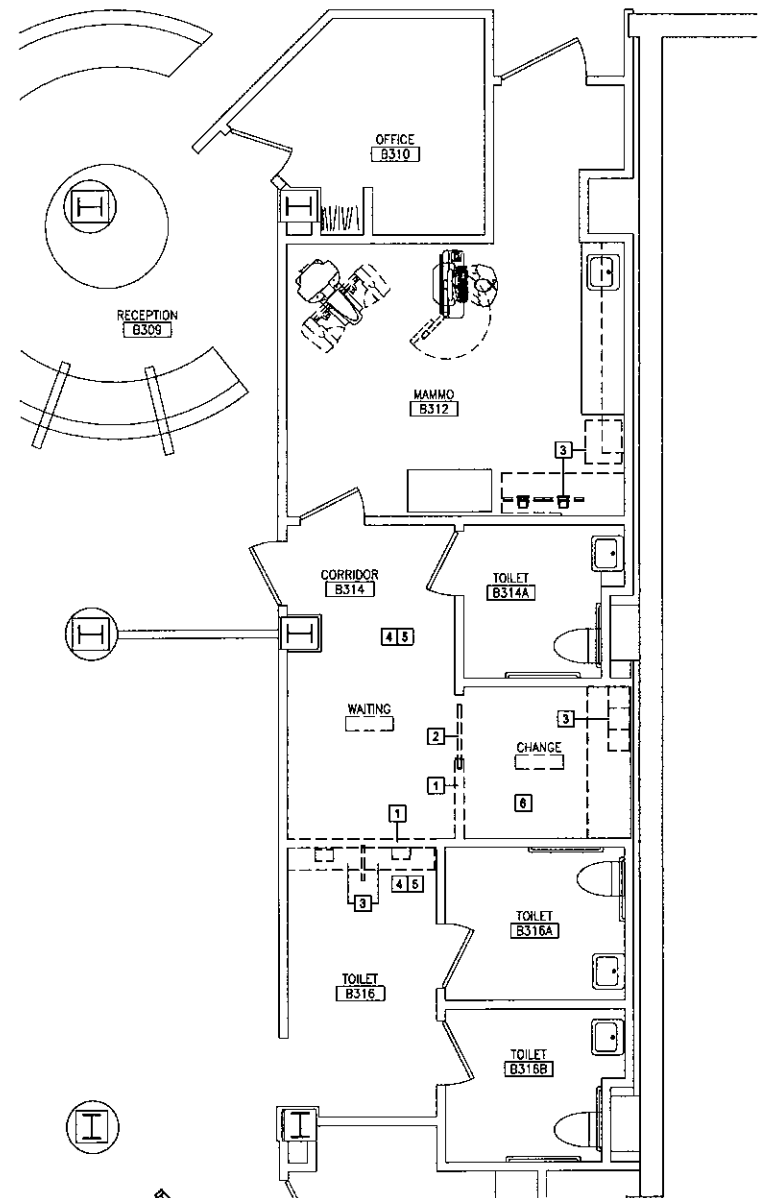


**CEILING PLAN NOTES:**

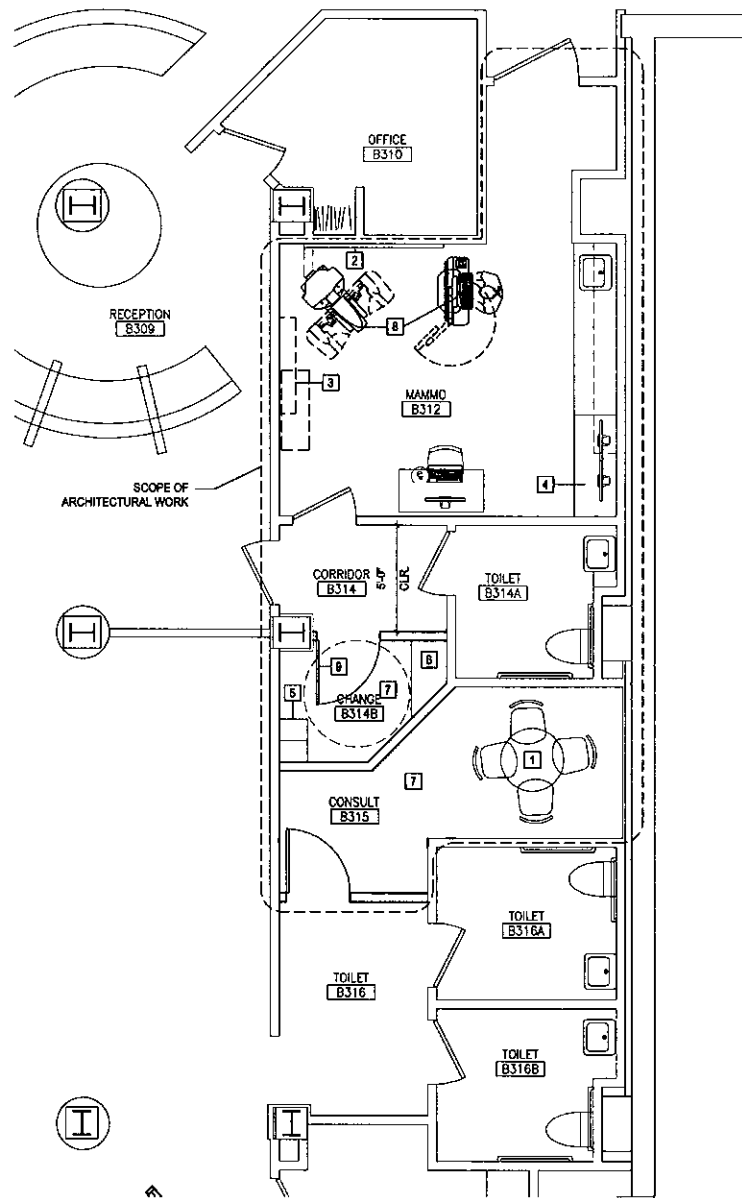
- SEE G1001 FOR GENERAL PROJECT NOTES.
- SEE FINISH SCHEDULE FOR CEILING AND CEILING GRID TYPES.
- EXCEPT WHERE INDICATED, CENTER CEILING GRIDS IN ROOMS. USE HALF TILES OR GREATER @ PERIMETERS WHEN POSSIBLE.
- ALIGN CEILING ITEMS AS SHOWN, WITH COMMON CENTERLINES TYPICALLY. CENTER ITEMS IN CEILING, OR IN AREAS UNLESS INDICATED OTHERWISE.
- WHERE REGULAR OR BEVELED TILE IS USED, PAINT ALL CUT EDGES TO MATCH.
- CAULK JOINT BETWEEN CEILING GRID (WALL ANGLE) AND WALL WHERE GAPS ARE LARGER THAN 1/8" OR GREATER.
- PROVIDE ACCESS PANELS AS REQUIRED IN GWB CEILINGS FOR ACCESS AS REQUIRED BY ALL TRADES.
- FIRE SPRINKLERS SHALL BE CENTERED IN CEILING TILE OR HALF TILE AS SHOWN. FIRE SPRINKLERS SHALL BE LOCATED IN ALIGNMENT WITH OTHER CEILING ITEMS AND SHALL BE PLACED IN COORDINATION WITH LIGHT FIXTURE POSITIONS INDICATED, TYPICAL.
- FIRE SPRINKLERS ARE SHOWN FOR COORDINATION PURPOSES ONLY. ADDITIONAL SPRINKLER HEADS MAY BE REQUIRED FOR CODE COMPLIANCE, AS DETERMINED BY THE FIRE PROTECTION DESIGNER. SPRINKLERS ARE NOT SHOWN IN ALL AREAS WHERE REQUIRED. FIRE PROTECTION CONTRACTOR SHALL BE RESPONSIBLE FOR PROVIDING A COMPLETE AND FULLY CODE COMPLIANT SYSTEM, INCLUDING HEADS NOT INDICATED IN THIS DRAWING. SIDEWALL MOUNT SPRINKLER HEADS UNDER BALCONIES ARE NOT SHOWN IN THE CEILING PLANS.
- SEE MECHANICAL, ELECTRICAL, AND PLUMBING DRAWINGS FOR ADDITIONAL INFORMATION.
- WHERE ARCHITECTURAL DRAWINGS DEPICT MECHANICAL OR ELECTRICAL ITEMS/EQUIPMENT (LIGHTS, DIFFUSERS, ETC.) INSTALLATION OF SUCH ITEMS SHALL BE COORDINATED WITH EACH RESPECTIVE TRADE SUB-CONTRACTOR.
- WHERE DRAWINGS DO NOT ACCESS INSTALLATION METHODOLOGY, THE CONTRACTOR SHALL BE BOUND TO PERFORM IN STRICT COMPLIANCE WITH THE MANUFACTURER'S SPECIFICATIONS AND INDUSTRY STANDARDS.
- NEW CEILING TILES AND GRID TO MATCH EXISTING ADJACENT, TYPE AND STYLE.

**CEILING PLAN KEYED NOTES:**

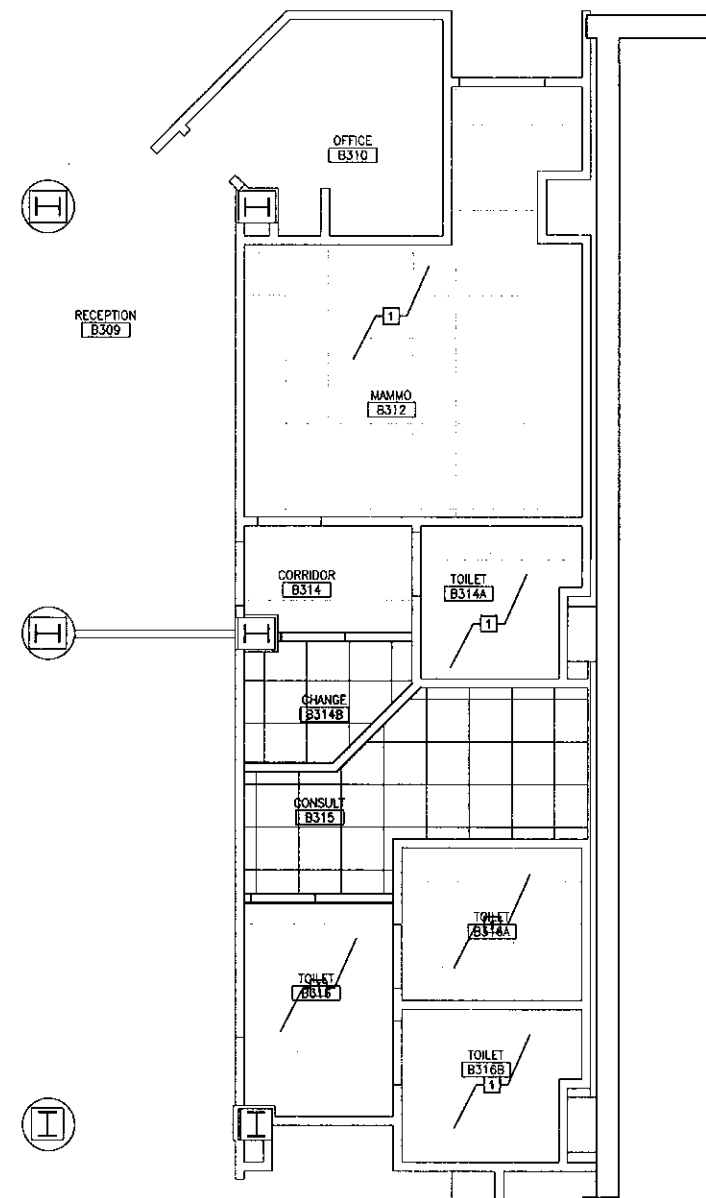
- EXISTING CEILING TO REMAIN.



DEMOLITION PLAN A11  
1/4"=1'-0"



FLOOR PLAN A6  
1/4"=1'-0"



REFLECTED CEILING PLAN A1  
1/4"=1'-0"

0	ISSUED FOR PERMITTING	1/30/17
REV	DESCRIPTION	DATE
ISSUED FOR PERMITTING 1-30-17		
CURRENT ISSUE STATUS:		
PROJECT NORTH: SMRT Architects and Engineers 144 Fore Street Portland, Maine 04104 1.877.700.7578 www.smrtinc.com		
<b>MAINE MEDICAL CENTER BRAMHALL MAMMOGRAPHY RENOVATIONS</b> PORTLAND, MAINE		
<b>FLOOR, DEMOLITION, AND REFLECTED CEILING PLAN</b>		
SHEET TITLE:		
SCALE: AS NOTED		
PROJECT MANAGER: D.V	PROJECT NO:	18204
AE OF RECORD: D.V		
JOB CAPTAIN: MDR		
DRAWN BY: MDR		
SMRT FILE: AE100-18204	SHEET No.	AE100