

# ARCHITECTURAL ABBREVIATIONS

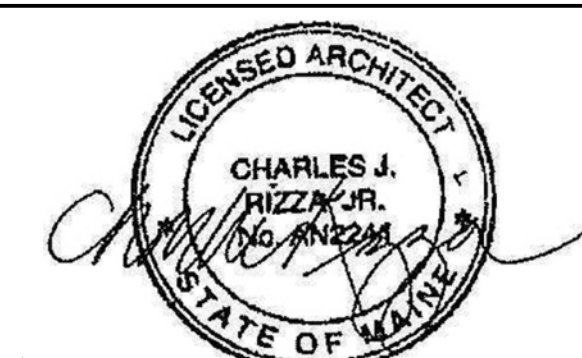
# ARCHITECTURAL SYMBOLS

# DOOR SWING CLEARANCES

**morris switzer**  
environments for health

Williston, Vermont  
Boston, Massachusetts  
Portland, Maine  
163 Middle Street  
Portland, ME 04101  
t 207.773.8840  
f 207.773.8840

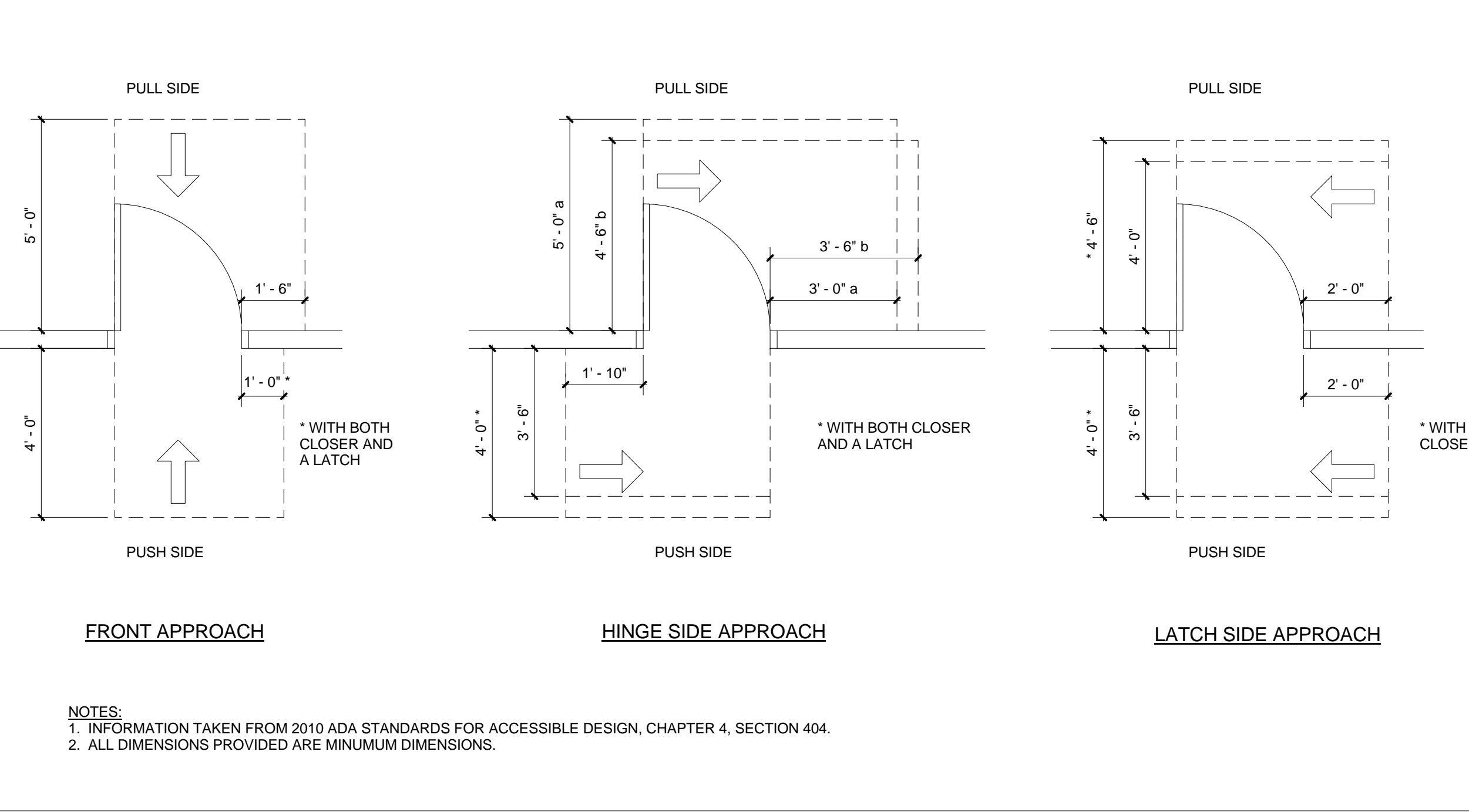
© 2014 MorrisSwitzer  
morriswitzer.com



**FITZMEYER & TOCCI**  
ASSOCIATES, INC.  
MECHANICAL / ELECTRICAL ENGINEERING  
Thoughtful Practical Engineering  
92 Montvale Ave., Suite 4100  
Salem, MA 02150  
Tel: 781-481-0210  
Fax: 781-481-0230  
Web: www.ft.com

Table of architectural abbreviations including: A/C AIR CONDITIONING, AB ANCHOR BOLT ACCESS, AD ADJUSTABLE, ADJ ABOVE FINISHED FLOOR, AFF AGGREGATE, AHU AIR HANDLING UNIT, ALT ALTERNATE, ALUM ALUMINUM, ANOD ANODIZED, ARCH ARCHITECTURAL, ASB ASBESTOS, ASPH ASPHALT, AUTO AUTOMATIC, BD BOARD, BTM BOTTOM, BLDG BUILDING, BLOC BLOCKING, BLKG BLOCKING, BM BENCHMARK, BOT BOTTOM, BR BUMPER RAIL, BRG BRICK, BRK BRICK, BRZ BRONZE, BSMT BASEMENT, BTU BRITISH THERMAL UNIT, BUR BEVELED ROOFING, BV BEVELED, CAB CABINET, CB CATCH BASIN, CCT CURTAIN TRACK, CCU CORONARY CARE UNIT, CEM CEMENT, CFM CONTRACTOR FURNISHED, CFI CONTRACTOR INSTALLED, CFOI CONTRACTOR FURNISHED OWNER INSTALLED, CG CORNER GUARD, CHR CHAIR RAIL, CI CAST IRON, CIR CIRCLE, CJ CONSTRUCTION JOINT, CL CENTERLINE, CLG CEILING, CLK CAULKING, CLO CLOSET, CLOS CLOSURE, CLR CLEAR, CMU CONCRETE MASONRY UNIT, CO CLEAN OUT, COL COLUMN, COMP COMPOSITE FLOORING, COND CONCRETE, CONF CONFERENCE, CONN CONNECT (ION), CONT CONTINUOUS, CONTR CONTRACTOR, CORR CORRUGATED, CPT CARPET, CR CHAIR RAIL, CR CRASH RAIL, CS CENTRAL STERILE, CSI CONSTRUCTION SPECIFICATION, CSMT CASEMENT, CT CERAMIC TILE, CW COLD WATER, CWT CERAMIC WALL TILE, DIA DOUBLE ACTING, DBL DOUBLE, DEG DEGREE, DEMO DEMOLITION, DEMOUNT DEMOUNTABLE, DEP DEPRESSION, DET DETAIL, DF DRINKING FOUNTAIN, DG DECORATIVE GLASS, DH DOUBLE HUNG, DIA DIAMETER, DIAG DIAGONAL, DIM DIMENSION, DIV DIVISION, DN DOWN, DR DOOR, DW DISHWASHER, DWG DRAWING, DWR DRAWER, EA EAST, ED EMERGENCY DEPARTMENT, EF EXHAUST FAN, EIFS EXTERIOR INSULATING FINISH SYSTEM, EJ EXPANSION JOINT, EL ELEVATION, ELEC ELECTRIC (AL), ELEV ELEVATOR, EMERG EMERGENCY, ENCL ENCLOSURE, EO EMERGENCY ELECTRICAL OUTLET, EPS EPOXY PAINT SYSTEM, EPS EXTERIOR PAINT SYSTEM, EQ EQUAL, EQUIP EQUIPMENT, ETR EXISTING TO REMAIN, EWC ELECTRIC WATER COOLER, EXCAV EXCAVATE, EXH EXHAUST, EXIST EXISTING, EXP EXPANSION, EXT EXTERIOR, FA FIRE ALARM, FAB FABRICATED, FD FLOOR DRAIN, FE FIRE EXTINGUISHER, FEC FIRE EXTINGUISHER CABINET, FFEL FINISH FLOOR ELEVATION, FHFC FIRE HOSE & EXTINGUISHER CABINET, FHC FIRE HOSE CABINET, FM FINISH (E/D), FLR FLOOR, FLUOR FLUORESCENT, FM FACTORY MUTUAL, FOC FACE OF CONCRETE, FOF FACE OF FINISH, FOS FACE OF STUD, FPRF FIREPROOF, FRPL FIREPLACE, FRT FIRE RETARDANT TREATED, FT ( ) FOOT / FEET, FTB FABRIC TACK BOARD, FTG FOOTING, FURN FURNISH, FURR FURRING, FUT FUTURE, GA GAUGE, GALV GALVANIZED, GC GENERAL CONTRACTOR, GLT GLASS, GLZ GLASS GLAZING, GYP GYPSUM BOARD, GYPS GYPSUM WALLBOARD, UNFIN UNFINISHED, UON UNOCCUPIED, UR URINAL, VAR VARNISH, VBT VINYL ASBESTOS TILE, VCB VINYL COVE BASE, VCT VINYL COMPOSITION TILE, VERT VERTICAL, VEST VESTIBULE, VIF VERIFY IN FIELD, VVC VINYL WALL COVERING, W WEST, W/O WITHOUT, WC WATER CLOSET, WOOD WOOD, WDW WINDOW, WDF WIDE FLANGE, WFI WROUGHT IRON, WFM WALK OFF MAT, WT WEIGHT, WWF WELDED WIRE FABRIC, WWM WELDED WIRE MESH, YD YARD

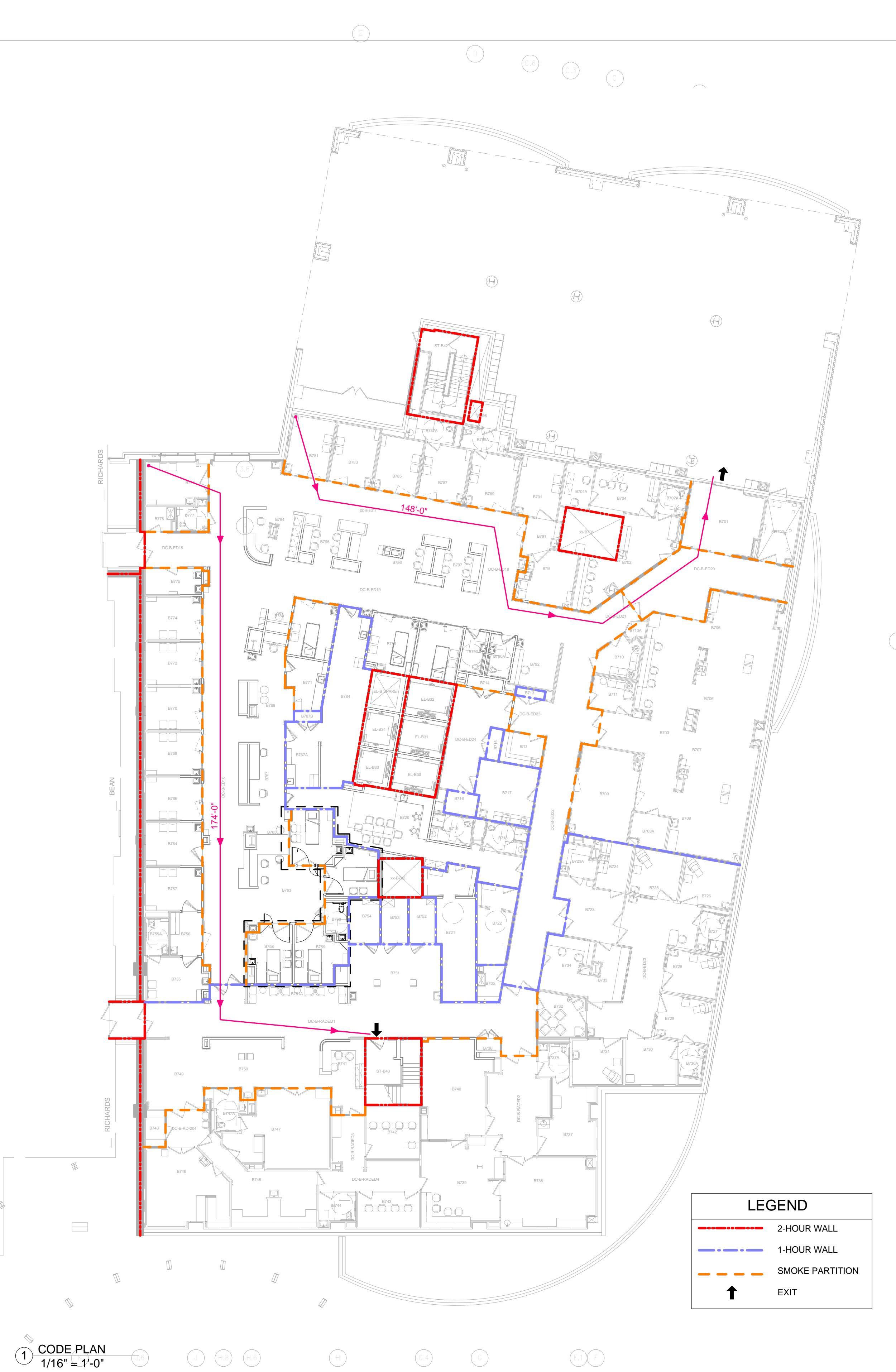
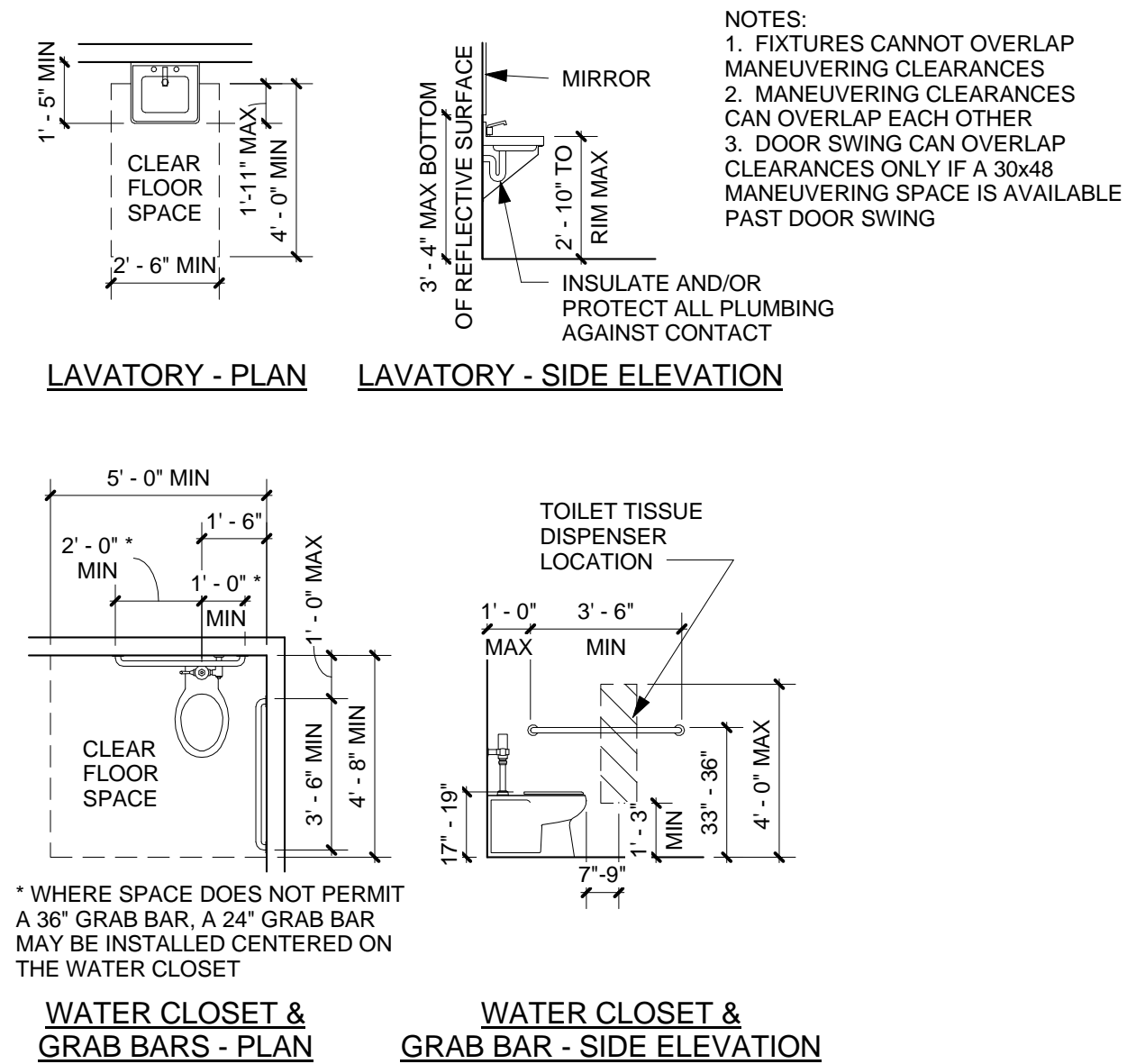
Table of architectural symbols including: CENTERLINE, PROPERTY/REFERENCE LINE, FLOOR LINE ELEVATION, HIDDEN OR FUTURE WORK OR WORK TO BE REMOVED, SECTION LINE, MATCH LINE, SPOT ELEVATION NEW WORK, BENCH MARK ELEVATION, CHANGE IN FLOOR OR CEILING ELEVATION (PLAN VIEW), NEW GRADING CONTOUR, EXISTING GRADING CONTOUR, NEW PARTITION, EXISTING PARTITION, PARTITION TO BE DEMOLISHED, EXISTING PARTITION, DRYWALL TO BE DEMOLISHED, NEW SWING DOOR (90 Deg.), NEW SWING DOOR (180 Deg.), NEW DOUBLE ACTING SWING DOOR w/ EMERGENCY RELEASE HARDWARE, EXISTING DOOR TO REMAIN, EXISTING DOOR TO BE REMOVED, INTERIOR ELEVATION TAG, PLAN OR ENLARGED DETAIL TAG, BUILDING OR WALL SECTION TAG, EXTERIOR ELEVATION TAG, NEW COLUMN LINE REFERENCE, EXISTING COLUMN LINE REFERENCE, ROOM NAME & NUMBER TAG, PARTITION TYPE TAG, ELEVATION TAG ON SECTION, DOOR NUMBER TAG, WINDOW TAG, CURTAINWALL TAG, BORROWED LIGHT TAG, LOUVER TAG, STOREFRONT TAG, GENERAL NOTES, TOILET ACCESSORIES TAG, WALL TAG, DEMOLITION NOTES, FURNITURE OR EQUIPMENT FURNISHED BY OWNER, CORNER GUARD, BUMPER RAIL, CHAIR RAIL, KICK RAIL, ANDRAIL, FIRE EXTINGUISHER CABINET, AUTOMATIC DOOR PUSH PLATE



## MATERIAL LEGEND

Table of material legend including: TOPSOIL, ROOF BALLAST, CRUSHED GRAVEL, CONCRETE, CONCRETE BLOCK, BRICK, PLASTER/MORTAR, PRECAST CONC, CONG OR EIFS IN ELEVATION, QUANTITY, STUCCO/MORTAR, STEEL, ALUMINUM, SHEET METAL IN ELEVATION, MARBLE, ACOUSTICAL TILE, WOOD BLOCKING OR CONTINUOUS NAILER, WOOD SHIM, HARDWOOD TRIM, PLYWOOD, RIGID INSULATION, WATERPROOF MEMBRANE, GLASS (LARGE SCALE), GYPSUM BOARD, CERAMIC TILE

## ADA TOILET CLEARANCES



Key Plan N.T.S.

Revision table with columns: Revision, Date, No.

MAINE MEDICAL CENTER  
22 Bramhall Street, Portland, ME 04102

ED Psych Exam Room Renovations

MorrisSwitzer Project Number 201451  
Date 1.27.2017  
Scale As indicated  
Sheet Title and Number

ABBREVIATIONS, STANDARDS & CODE PLAN

AG-1

F:\MMC\_201451\_EDPsychRmReno\03 AcadBase Drawings\MMC-EDPsychRmReno.rvt

2/1/2017 1:01:04 PM