

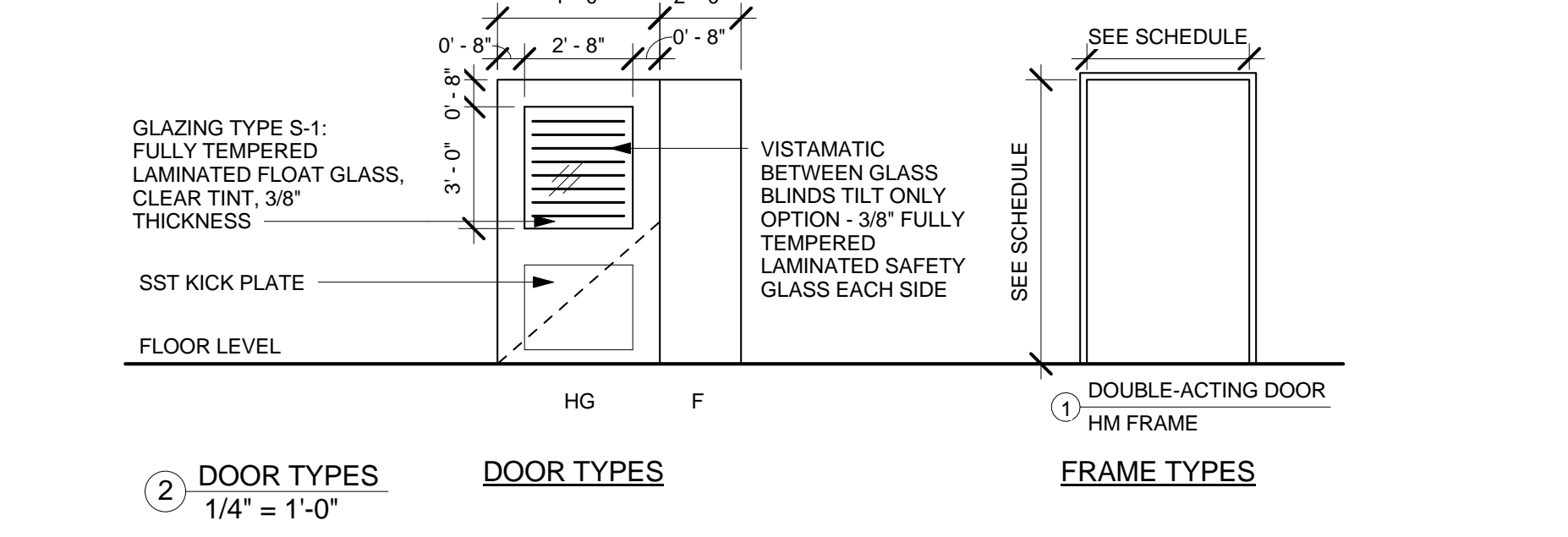
ROOM SCHEDULE

NUMBER	NAME	CEILING TYPE	CEILING FINISH	EAST	NORTH	SOUTH	WEST	REMARKS
B15	EXAM	GYP	PT	*	*	*	*	PATCH FLOOR TO MATCH EXISTING
B14	EXAM	GYP	PT	*	*	*	*	PATCH FLOOR TO MATCH EXISTING
B760	TOILET	GYP	PT	*	*	*	*	PATCH FLOOR TO MATCH EXISTING
B13	EXAM	GYP	PT	*	*	*	*	PATCH FLOOR TO MATCH EXISTING
B12	EXAM	GYP	PT	*	*	*	*	PATCH FLOOR TO MATCH EXISTING

*NOTE: EXISTING GWB & BASE TO REMAIN. PATCH AND PAINT TO MATCH EXISTING FINISHES AS REQUIRED. ALL LOCATIONS.

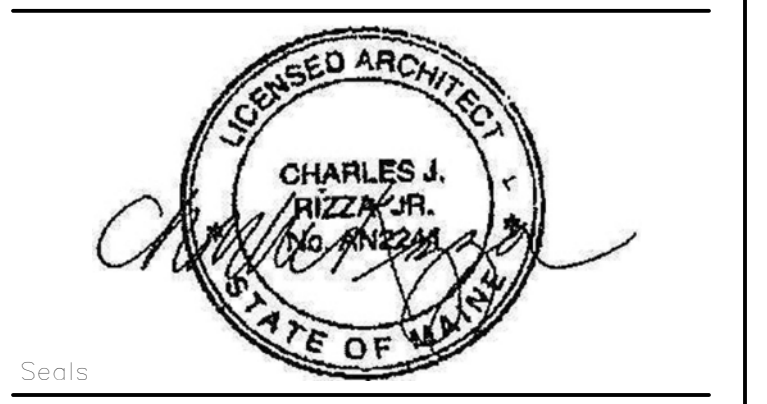
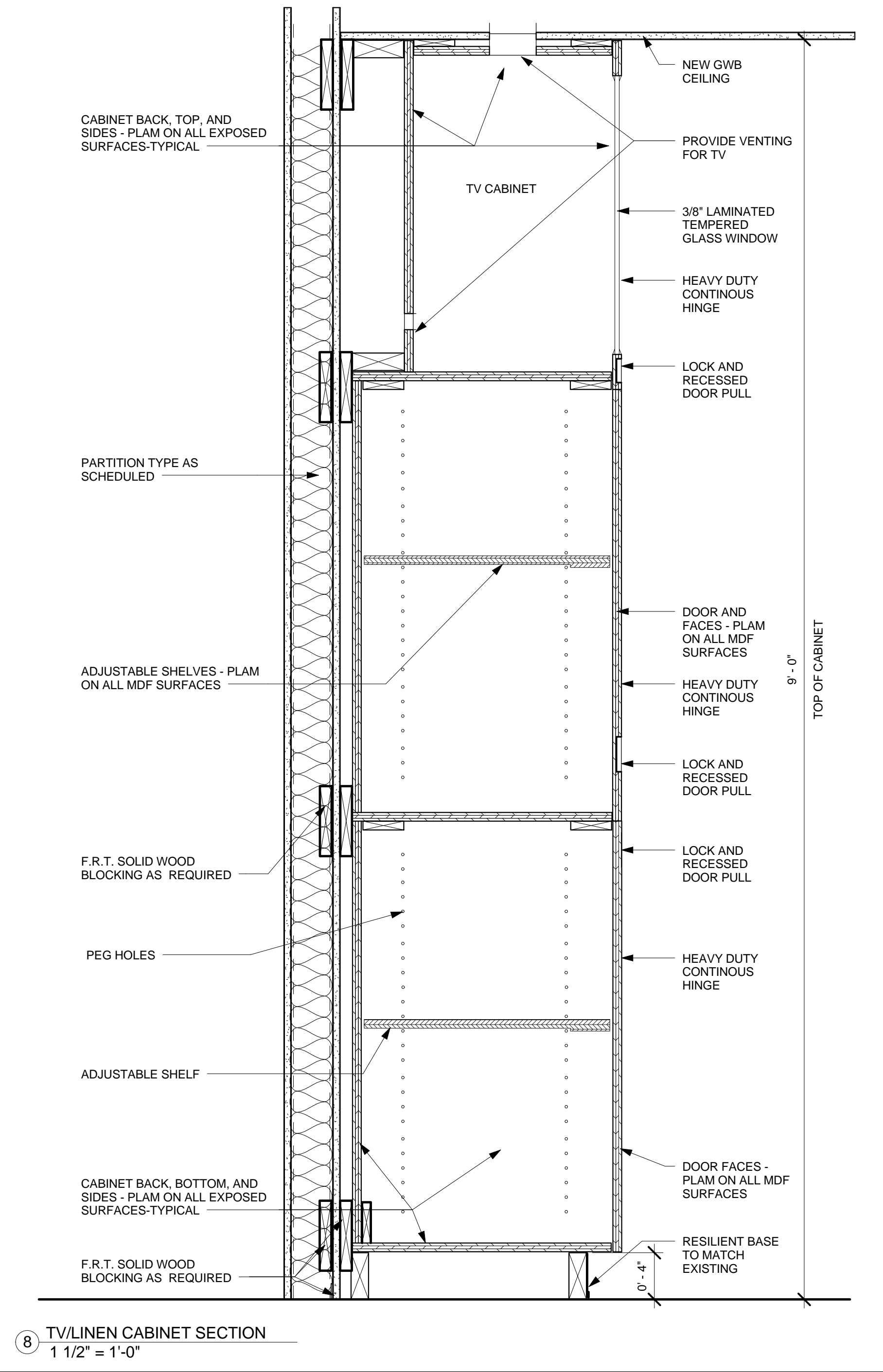
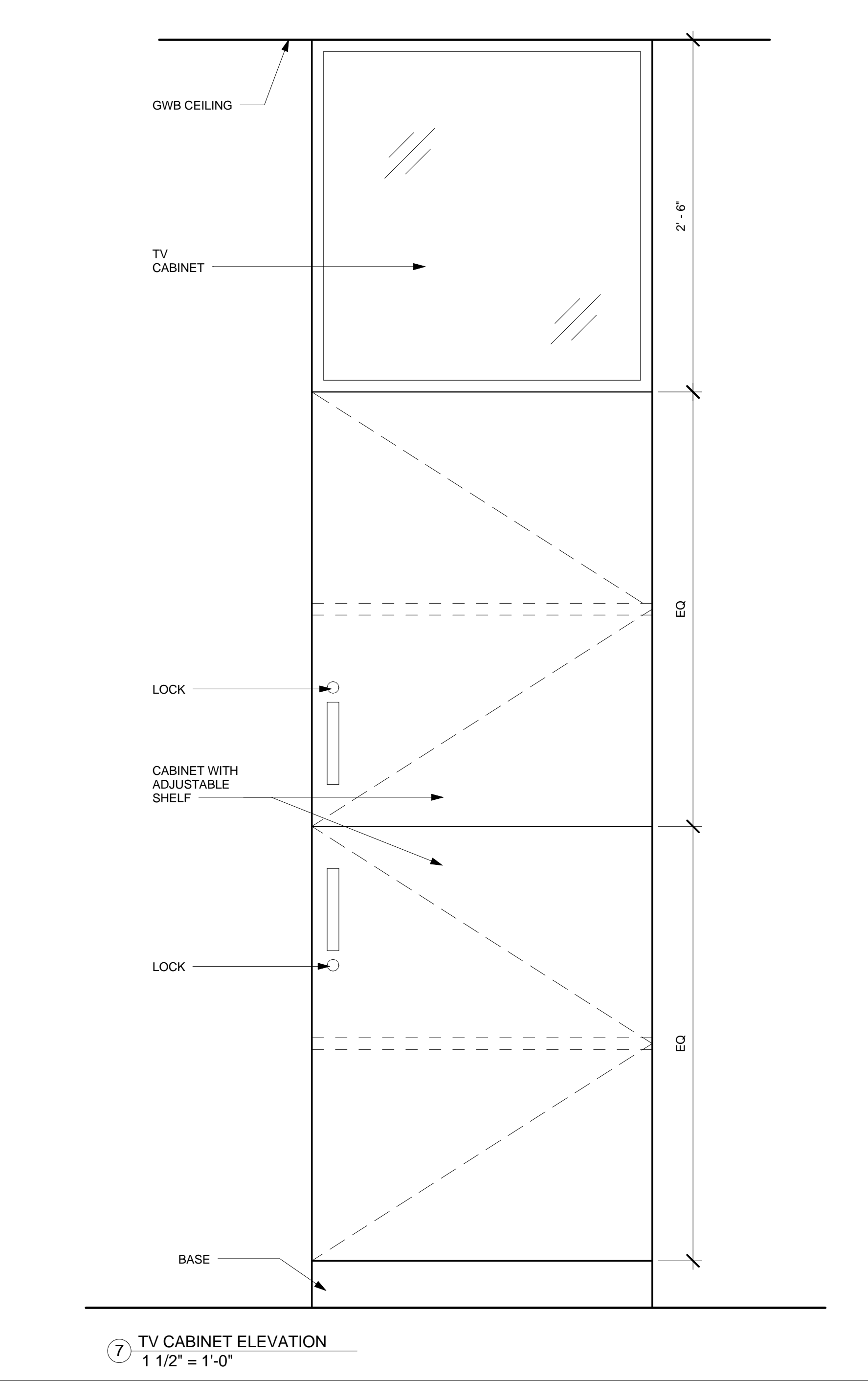
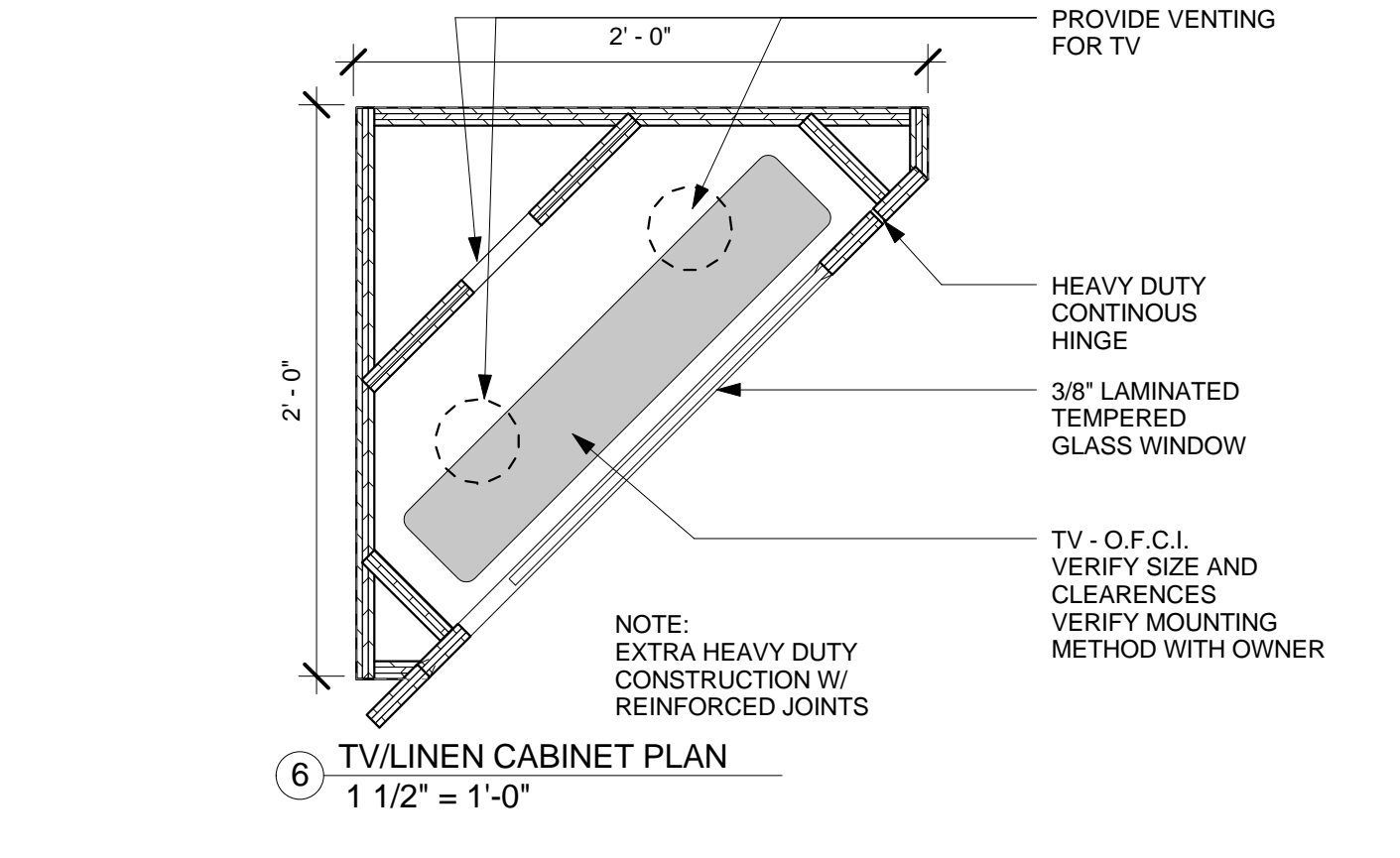
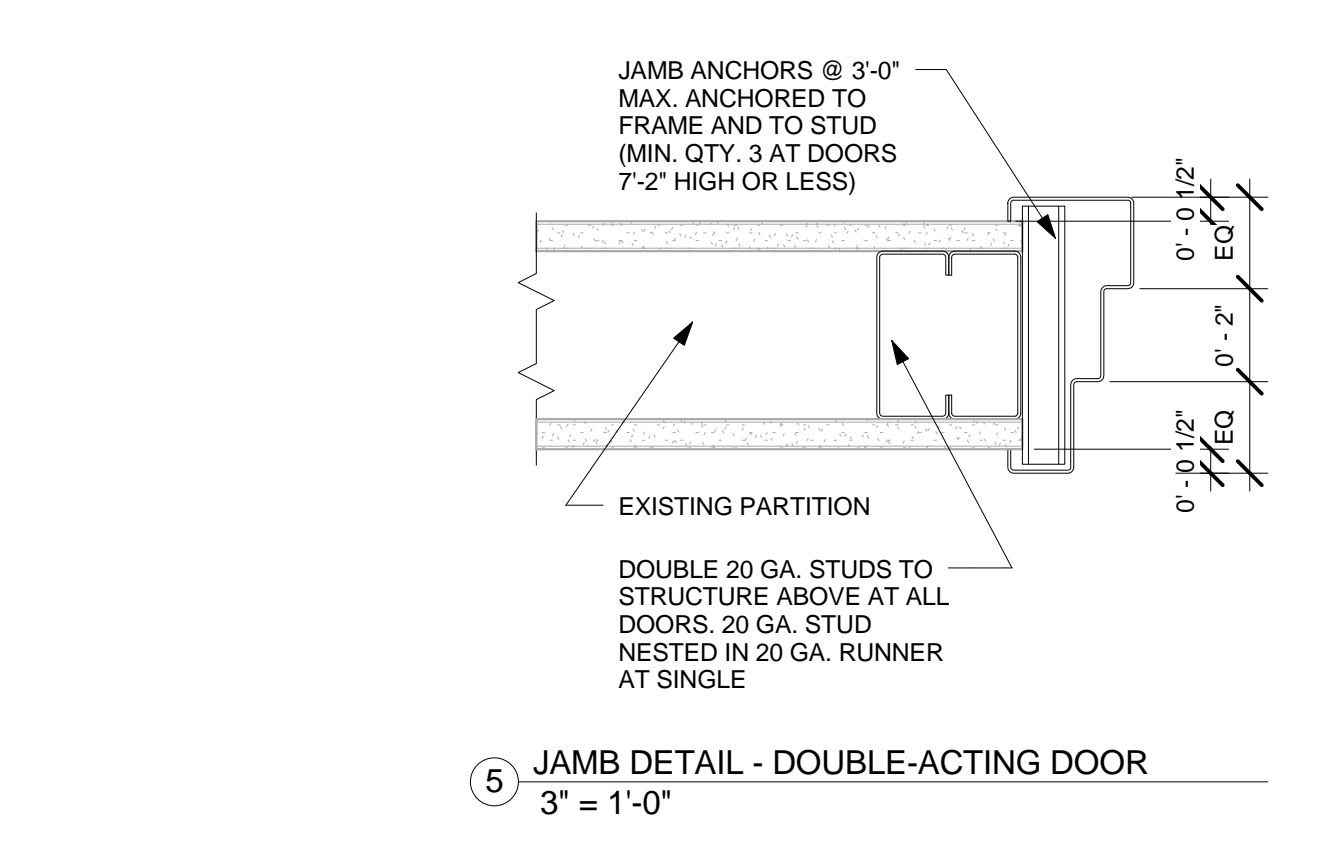
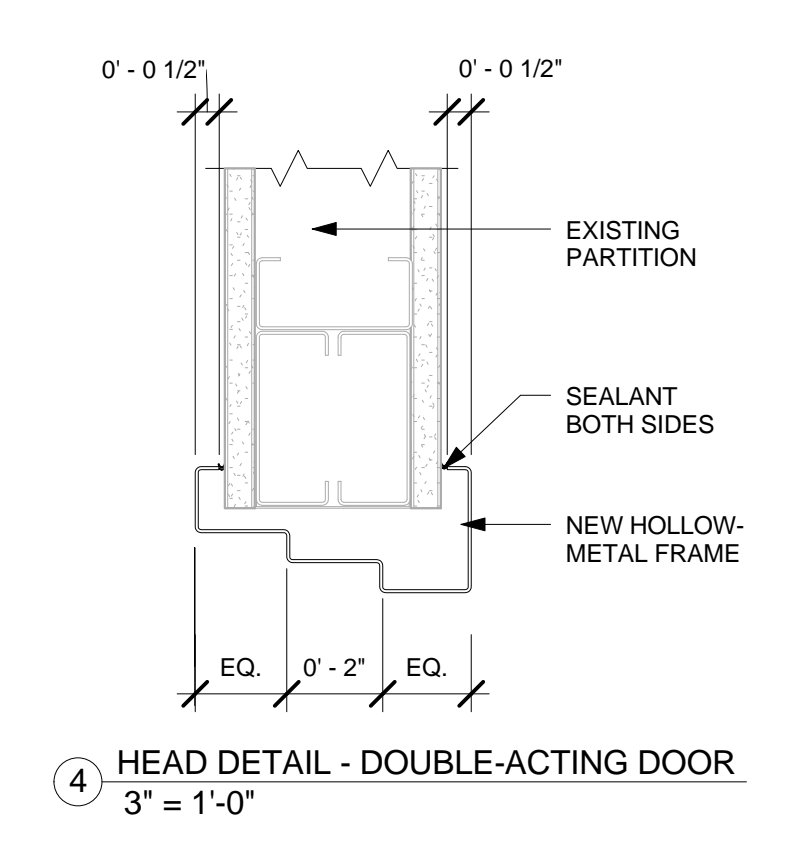
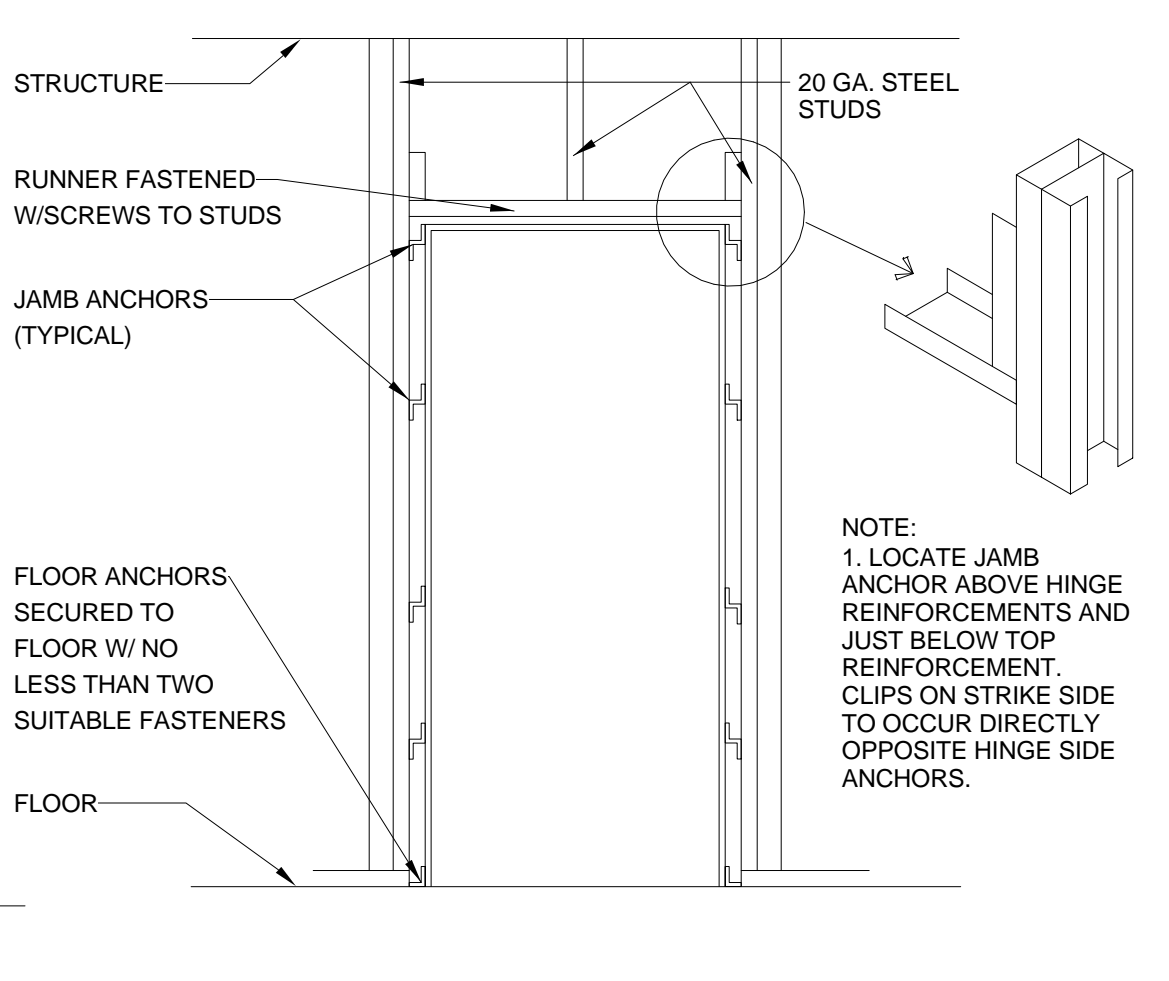
DOOR SCHEDULE

NUMBER	DOOR TYPE	MATERIAL	WIDTH	HEIGHT	FRAME TYPE	GLAZING TYPE	HARDWARE	REMARKS
B15	HG/F	WD	6'-0"	7'-0"	1	HM	S-1	HEAVY DUTY CONTINUOUS HINGE, HOSPITAL LATCH, CONCEALED FLUSH BOLTS, SST KICK PLATE
B14	HG/F	WD	6'-0"	7'-0"	1	HM	S-1	HEAVY DUTY CONTINUOUS HINGE, HOSPITAL LATCH, CONCEALED FLUSH BOLTS, SST KICK PLATE
B13	HG/F	WD	6'-0"	7'-0"	1	HM	S-1	HEAVY DUTY CONTINUOUS HINGE, HOSPITAL LATCH, CONCEALED FLUSH BOLTS, SST KICK PLATE
B12	HG/F	WD	6'-0"	7'-0"	1	HM	S-1	HEAVY DUTY CONTINUOUS HINGE, HOSPITAL LATCH, CONCEALED FLUSH BOLTS, SST KICK PLATE



GENERAL NOTES

- ALL DOORS MUST OPEN TO A FULL 90° (OR MORE WHERE INDICATED).
- MAINTAIN A 4" MINIMUM CLEARANCE (UNLESS OTHERWISE SHOWN IN PLAN) BETWEEN DOOR JAMB AND ADJACENT PARTITION.
- MAINTAIN CONTINUITY OF SMOKE AND RATED PARTITIONS AT FRAMES.
- CONTRACTOR TO COORDINATE DOOR VISION PANEL CUT-OUT W/ HARDWARE CUTOUTS.
- REFER TO SPECIFICATIONS FOR HARDWARE SET TYPES.
- ALL RATED DOORS AND SMOKE DOORS SHALL BE POSITIVE LATCHING.
- MANUFACTURER'S INSTALLATION INSTRUCTIONS SHALL BE AVAILABLE ON THE JOB SITE FOR ALL RATED DOOR ASSEMBLIES.
- HAND ACTIVATED DOOR OPENING HARDWARE SHALL BE CENTERED BETWEEN 30 INCHES AND 44 INCHES ABOVE THE FLOOR.
- FIELD VERIFY EXISTING WALL FOR THROAT DIMENSION OF FRAME WHERE A NEW DOOR IS INSTALLED IN AN EXISTING WALL. ALSO, FIELD VERIFY DIMENSIONS WHERE A NEW WALL IS TO ALIGN WITH THE EXISTING WALL.



FITZMEYER & TOCCI
ASSOCIATES, INC.
MECHANICAL / ELECTRICAL ENGINEERS
Thoughtful Practical Engineering
92 Montvale Ave., Suite 4100
Salem, MA 02150
Tel: 781-481-0210
Fax: 781-481-0230
Web: www.f-t.com

Project North

Key Plan N.T.S.

Revision	Date	No
AS1-01	1-13-15	

MAINE MEDICAL CENTER
22 Bramhall Street, Portland, ME 04102

ED Psych Exam Room Renovations

MorrisSwitzer Project Number 201451
Date 1.27.2017
Scale As indicated
Sheet Title and Number

REFLECTED CEILING PLAN, SCHEDULES, AND DETAILS