

**FIRE PROTECTION DEMOLITION NOTES**

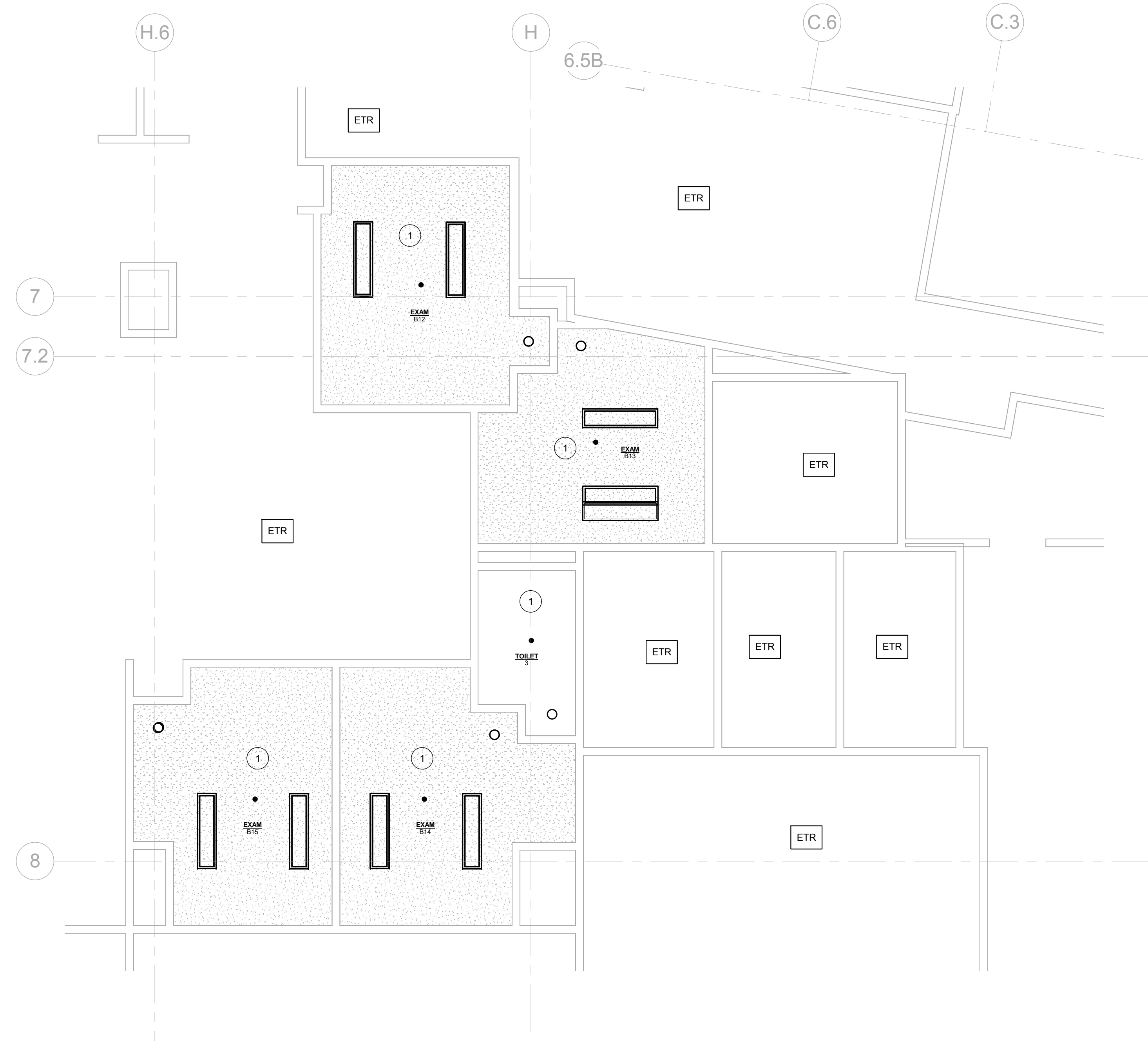
1 DISCONNECT AND REMOVE EXISTING SPRINKLER AND SWING ARM-OVER. RETAIN EXISTING SPRINKLER BRANCH PIPE FOR REUSE.

**FIRE PROTECTION NEW WORK NOTES**

1 EXTEND 1" SPRINKLER PIPE FROM EXISTING BRANCH, PROVIDE SWING ARM-OVER AND CONNECT TO NEW SPRINKLER. COORDINATE WITH ALL CEILING MOUNTED EQUIPMENT.



1 FIRST FLOOR FIRE PROTECTION DEMO CEILING  
F1.0 1/4" = 1'-0"

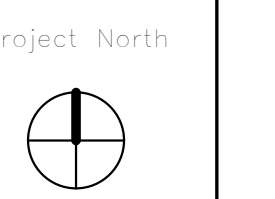


2 FIRST FLOOR FIRE PROTECTION NEW CEILING  
F1.0 1/4" = 1'-0"

Seals


Consultant

DD Approval Signature \_\_\_\_\_ Date \_\_\_\_\_

Key Plan N.T.S.


Issued For Construction

Revision	Date	No

Portland, Maine

**Psych Room  
Renovation**

MorrisSwitzer Project Number 201451  
Date 1/27/2017  
Scale As indicated  
Sheet Title and Number

**FIRE PROTECTION  
FIRST FLOOR PLAN**

**F1.0**