

**DEMOLITION PLAN NOTES**

1 WORK MAY BE REQUIRED OUTSIDE OF THE PROJECTS AREA OF RENOVATION. CONTRACTOR SHALL NOT ASSUME THAT AREA OF RENOVATION IS CONSIDERED THE SCOPE OF WORK AREA.

**DEMOLITION KEYED NOTES**

1 ALL EXISTING DEVICES, EMPTY WORK BOXES WITH COVERPLATES AND ASSOCIATED WIRING AND RACEWAYS SHALL BE REMOVED. PATCH EXISTING WALL (INTENTION IS THAT NO BLANK COVER PLATES WILL BE INSTALLED). ASSOCIATED BRANCH CIRCUIT WIRING SHALL BE MAINTAINED FOR RE-USE IN THIS PROJECT UNLESS OTHERWISE NOTED.

2 NOT USED.

3 ALL EXISTING DEVICES NOTED WITH A "XR" SERVING PATIENT MONITOR SHALL BE REMOVED AND RELOCATED TO LOCKABLE HEADWALL UNIT (EXISTING RELOCATED OR NEW REFER TO NEW WORK PLAN FOR ADDITIONAL INFORMATION). ASSOCIATED BRANCH CIRCUIT WIRING SHALL BE MAINTAINED/EXTENDED FOR RE-USE IN THIS PROJECT UNLESS OTHERWISE NOTED.

4 ALL EXISTING DEVICES AND EQUIPMENT ASSOCIATED WITH THE OVERHEAD BOOM LIGHTS NOTED WITH A "XR" SHALL BE REMOVED AND RELOCATED TO NEW NON PSYCHIATRIC EXAM ROOMS REFER TO NEW WORK PLAN FOR ADDITIONAL INFORMATION. ASSOCIATED BRANCH CIRCUIT WIRING SHALL BE MAINTAINED FOR RE-USE IN THIS PROJECT UNLESS OTHERWISE NOTED.

5 ALL EXISTING DEVICES NOTED WITH A "X" SHALL BE REMOVED. ASSOCIATED BRANCH CIRCUIT WIRING SHALL BE MAINTAINED/EXTENDED FOR RE-USE IN THIS PROJECT UNLESS OTHERWISE NOTED.

**POWER PLAN NOTES**

1 CONTRACTOR SHALL COORDINATE MOUNTING HEIGHT OF ALL DEVICES WITH ARCHITECTS DRAWINGS PRIOR TO ROUGH IN.

2 CIRCUIT NUMBERS ARE FOR DESCRIPTIVE PURPOSES ONLY. EXACT NUMBERS SHALL BE DETERMINED IN FIELD AND SHALL BE NOTED ON THE CONTRACTORS AS-BUILT DRAWINGS.

3 BRANCH CIRCUIT CONDUCTORS SHALL BE SIZED AND INSTALLED FOR A MAXIMUM BRANCH CIRCUIT VOLTAGE DROP OF 3% FROM PANELBOARD. TOTAL VOLTAGE DROP FROM SERVICE ENTRY TO LAST DEVICE ON CIRCUIT SHALL NOT EXCEED 5%. REFER TO SPECIFICATIONS FOR ADDITIONAL REQUIREMENTS AND OPTIONS.

4 COORDINATE EXACT LOCATIONS OF ALL MECHANICAL EQUIPMENT WITH HVAC, PLUMBING, AND FIRE PROTECTION DRAWINGS.

5 ALL RECEPTACLES WITHIN 6' OF A SINK SHALL BE PROVIDED WITH GFCI PROTECTION.

**POWER KEYED NOTES**

1 NOT USED.

2 CONNECTION TO NEW LONG PSYCHIATRIC HEADWALL UNIT MOUNTED AT 48" OR AS DIRECTED BY ARCHITECT. CONNECT TO ASSOCIATED BRANCH CIRCUIT WIRING MAINTAINED/EXTENDED FROM DEMOLITION PHASE.

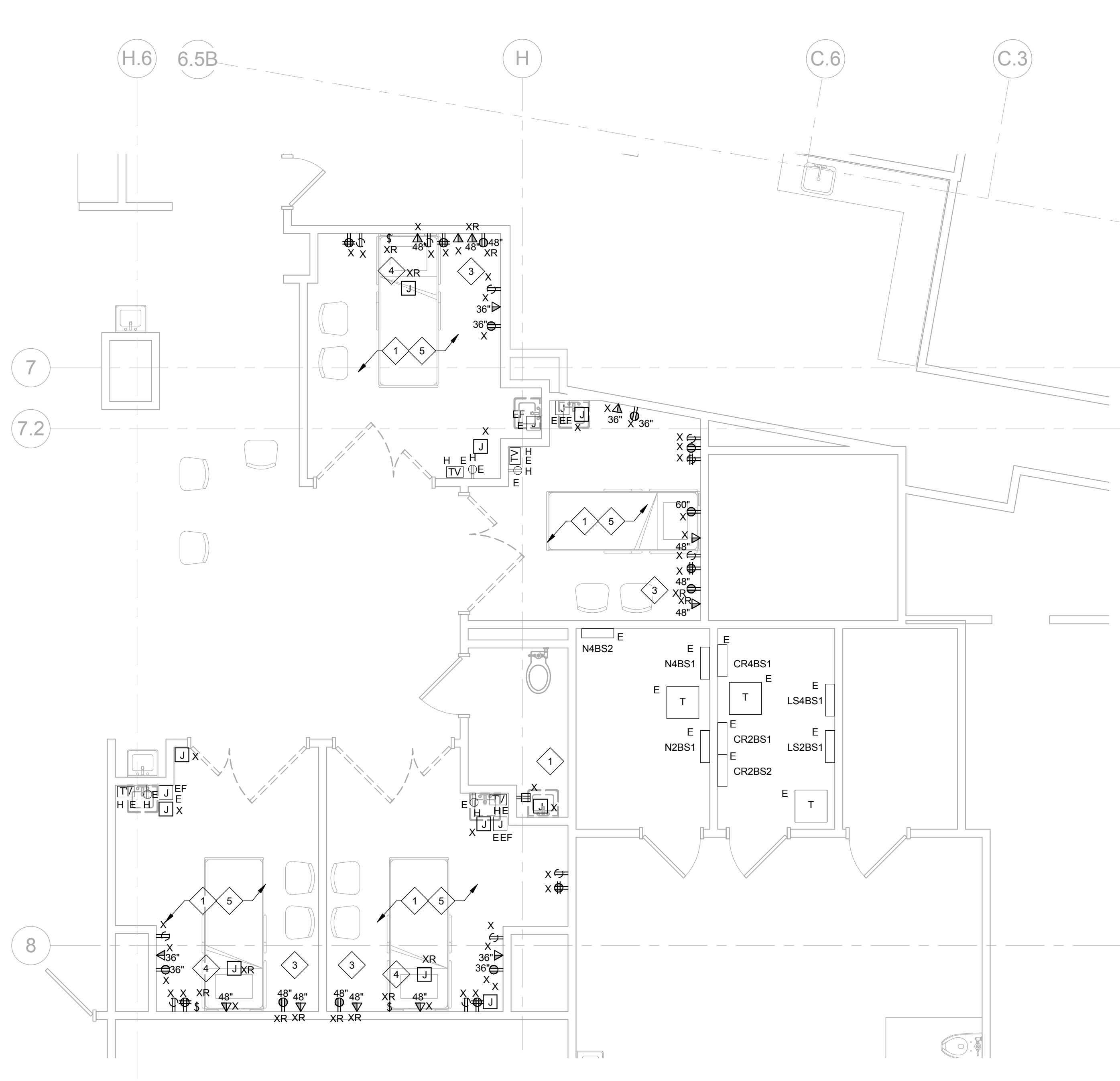
3 NOT USED.

4 CONNECTION TO LOCABLE RELOCATED SHORT PSYCHIATRIC HEADWALL UNIT MOUNTED AT 18" OR AS DIRECTED BY ARCHITECT. CONNECT TO ASSOCIATED BRANCH CIRCUIT WIRING MAINTAINED/EXTENDED FROM DEMOLITION PHASE.

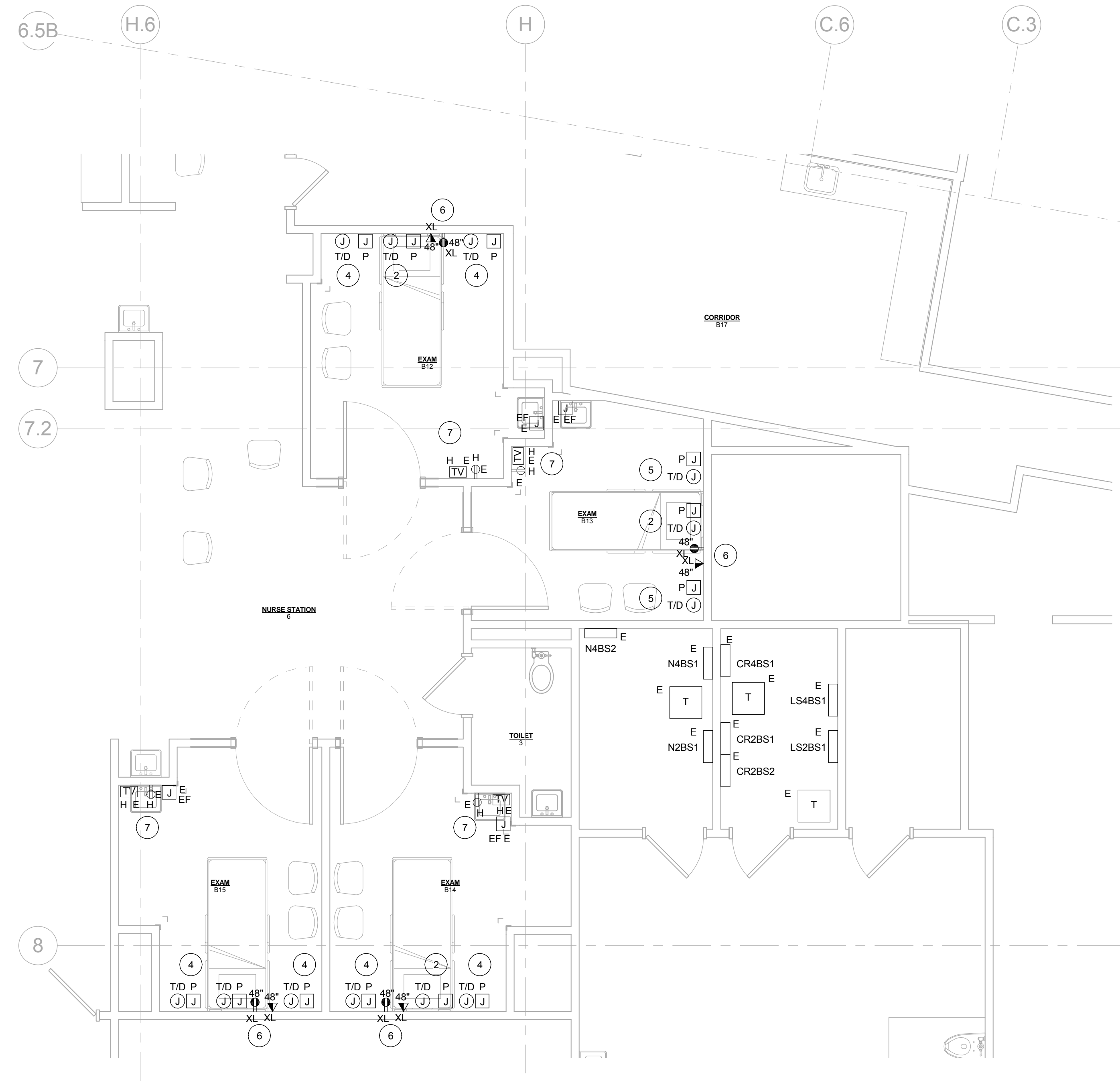
5 CONNECTION TO LOCABLE NEW SHORT PSYCHIATRIC HEADWALL UNIT MOUNTED AT 18" OR AS DIRECTED BY ARCHITECT. CONNECT TO ASSOCIATED BRANCH CIRCUIT WIRING MAINTAINED/EXTENDED FROM DEMOLITION PHASE.

6 NEW LOCATION OF RELOCATED PATIENT MONITORING DEVICES. LOCATE WITH NEW LOCKABLE PSYCHIATRIC COVER. CONNECT TO ASSOCIATED BRANCH CIRCUIT WIRING MAINTAINED/EXTENDED FROM DEMOLITION PHASE.

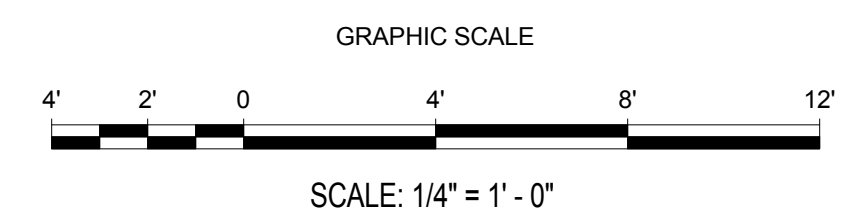
7 EXISTING DEVICES SERVING THE EXISTING TELEVISION ARE TO REMAIN. THE ARCHITECT WILL PROVIDE A NEW LOCKABLE PSYCHIATRIC COVER/ENCLOSURE FOR DEVICE/PATIENT PROTECTION.



1 Electrical First Floor Demolition Power and Tele/Data Plan  
1/4" = 1'-0"



2 Electrical First Floor Power and Tele/Data Plan  
1/4" = 1'-0"

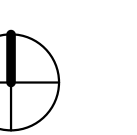


Seals

Consultant

DD Approval Signature Date


Project North



Key Plan N.T.S.


Issued For Construction

Revision Date No

Portland, Maine

**Psych Room  
Renovation**

MorrisSwitzer Project Number 201451  
Date 1/27/2017  
Scale As indicated  
Sheet Title and Number

**ELECTRICAL POWER  
PLANS**

**E2.0**