

DEMOLITION PLAN NOTES

1 WORK MAY BE REQUIRED OUTSIDE OF THE PROJECT'S AREA OF RENOVATION. CONTRACTOR SHALL NOT ASSUME THAT AREA OF RENOVATION IS CONSIDERED THE SCOPE OF WORK AREA.

DEMOLITION KEYED NOTES

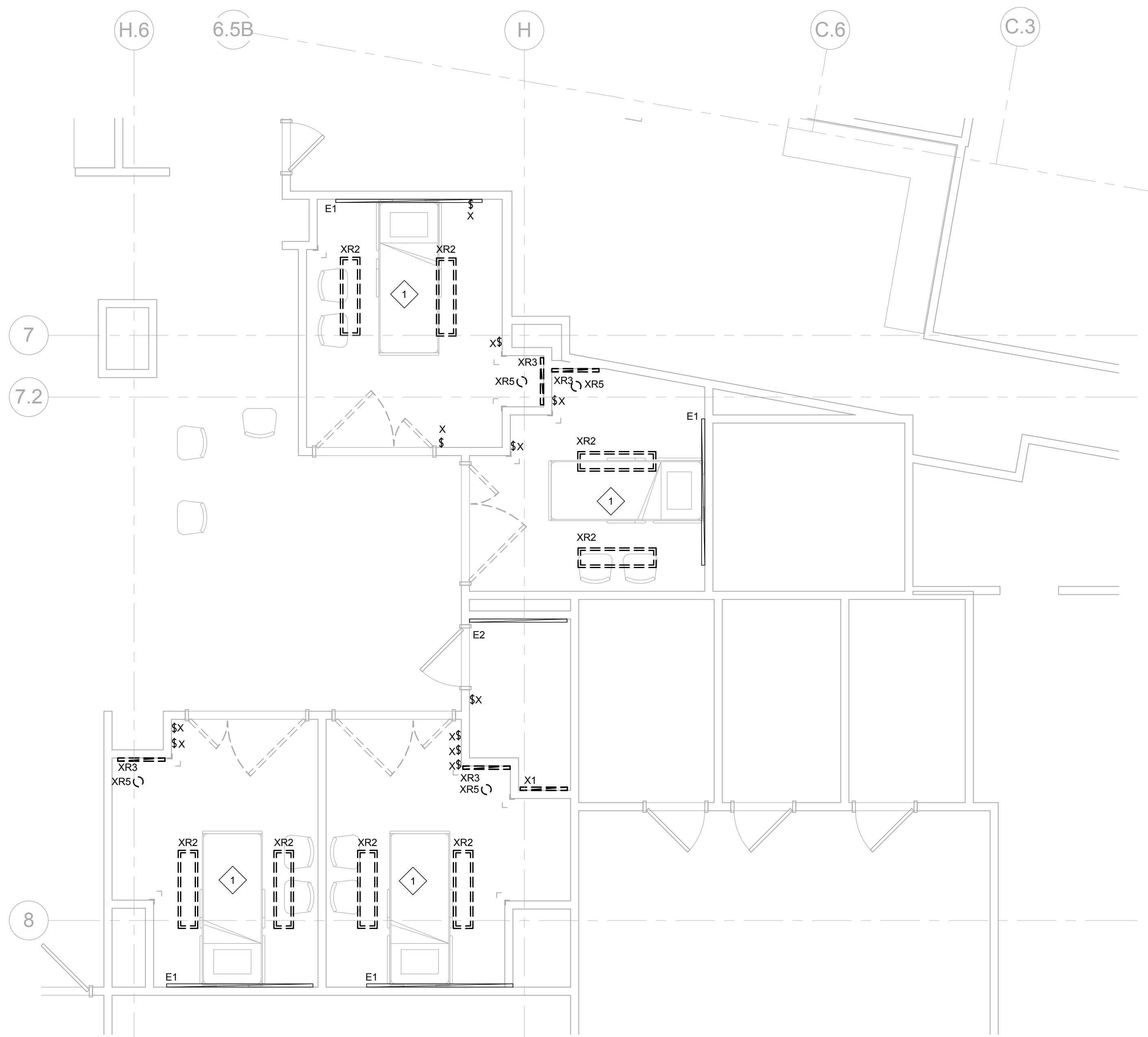
1 ALL EXISTING LIGHTING DEVICES LIGHTING, LIGHT FIXTURES AND ASSOCIATED WIRING AND RACEWAYS NOTED WITH A "XR" SHALL BE REMOVED AND STORED FOR REUSE/RELOCATION. ASSOCIATED BRANCH CIRCUIT WIRING SHALL BE MAINTAINED FOR RE-USE IN THIS PROJECT UNLESS OTHERWISE NOTED.

LIGHTING PLAN NOTES

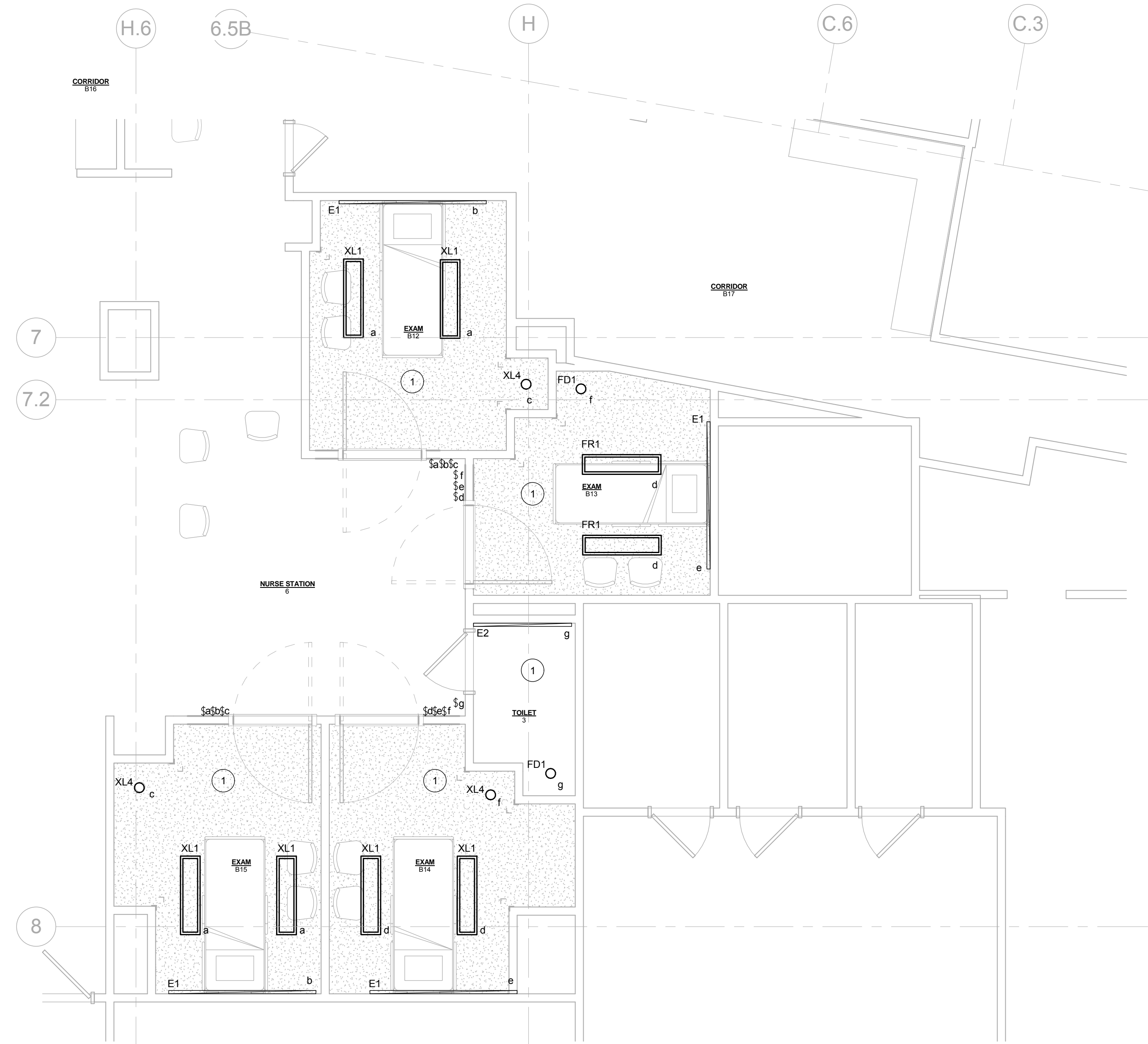
1. CIRCUIT NUMBERS ARE FOR DESCRIPTIVE PURPOSES ONLY. EXACT NUMBERS SHALL BE DETERMINED IN FIELD AND SHALL BE NOTED ON THE CONTRACTORS AS-BUILT DRAWINGS.
2. BRANCH CIRCUIT CONDUCTORS SHALL BE SIZED AND INSTALLED FOR A MAXIMUM BRANCH CIRCUIT VOLTAGE DROP OF 3% FROM PANELBOARD. TOTAL VOLTAGE DROP FROM SERVICE ENTRY TO LAST DEVICE ON CIRCUIT SHALL NOT EXCEED 5%. REFER TO SPECIFICATIONS FOR ADDITIONAL REQUIREMENTS AND OPTIONS.
3. EXIT SIGNS, FIXTURES DESIGNATED AS NIGHT LIGHTS, AND EMERGENCY BATTERY UNITS SHALL BE CONNECTED TO AN UNSWITCHED, CONSTANT "ON" SOURCE AS INDICATED.
4. FIXTURES SHOWN TO INCLUDE EMERGENCY BALLAST SHALL HAVE ADDITIONAL "CONSTANT ON" SOURCE.
5. ALL UNDERCABINET LIGHTING SHALL BE CONNECTED TO RECEPTACLE BRANCH CIRCUIT SERVING THE AREA. IF THE FIXTURE IS WITHIN 6' OF A SINK, THE CONNECTION SHALL BE AFTER THE GFCI DEVICE FOR GFCI PROTECTION.
6. FIXTURES TO BE RELOCATED SHALL BE HANDLED AS FOLLOWS: REMOVE, CLEAN, RE-LAMP AND STORE FOR RE-USE. MOUNT IN NEW LOCATION AS DIRECTED BY ARCHITECT. MAINTAIN EXISTING BRANCH CIRCUITRY SERVING FIXTURES INDICATED. EXTEND EXISTING WIRING TO NEW LOCATION AS JOB CONDITIONS REQUIRE. ANY NEW WIRING SHALL MATCH THE EXISTING.

LIGHTING KEYED NOTES

1 CONNECT NEW OR RELOCATED LIGHTING TO EXISTING BRANCH CIRCUITRY SERVING THE AREA AND NEW SWITCHING AS INDICATED.



1 Electrical First Floor Demolition Lighting Plan
1/4" = 1'-0"



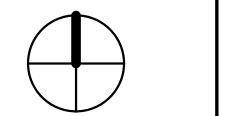
2 Electrical First Floor Lighting Plan
1/4" = 1'-0"

Seals

Consultant

DD Approval Signature Date

Project North



Key Plan N.T.S.

Issued For Construction

Revision Date No

Portland, Maine

**Psych Room
Renovation**

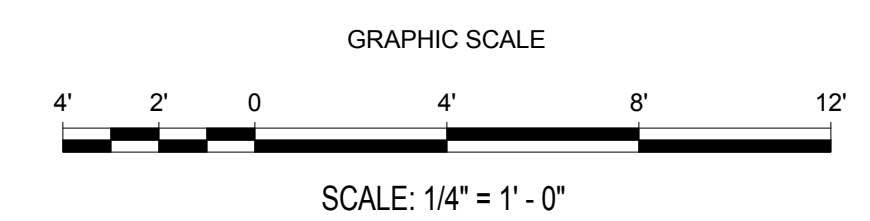
MorrisSwitzer Project Number 201451

Date 1/27/2017

Scale As indicated

Sheet Title and Number

**ELECTRICAL
LIGHTING PLANS**



E1.0