

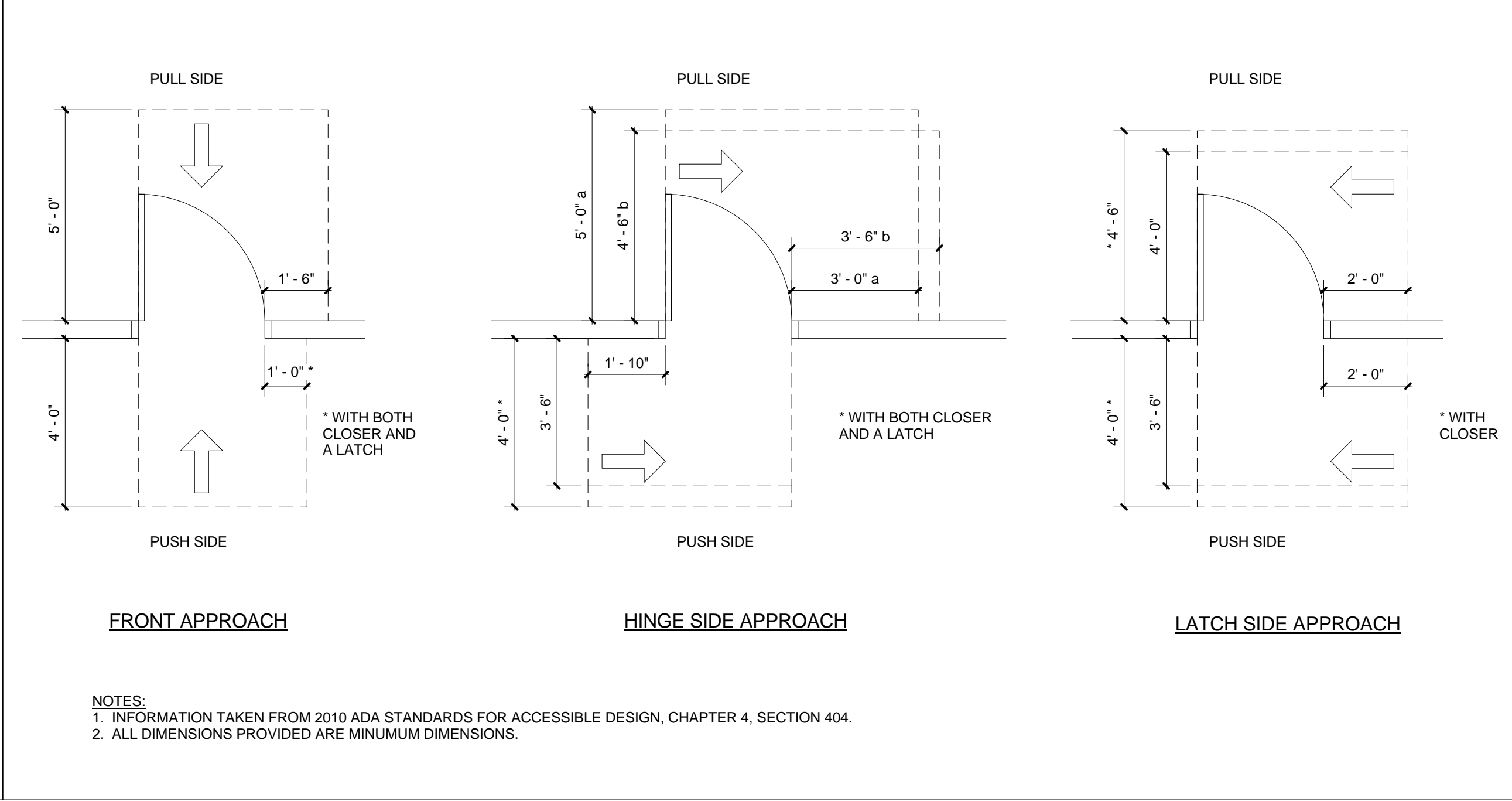
ARCHITECTURAL ABBREVIATIONS

A/C	AIR CONDITIONING	JAN	JANITOR
AB	ANCHOR BOLT	JST	JOIST
ACC	ACCOUSTICAL CEILING TILE	JO	JOINT
AD	AREA DRAIN	KIT	KITCHEN
ADHES	ADHESIVE	KN	KNOCKOUT
ADJ	ADJUSTABLE	KPL	KICK PLATE
AFF	ABOVE FINISHED FLOOR	KR	KICK RAIL
AGR	AGGREGATE	LAB	LABORATORY
AHU	AIR HANDLING UNIT	LAM	LAMINATE (D)
ALT	ALTERNATE	LAV	LAVATORY
ALUM	ALUMINUM	L	LABEL
AND	AND	LF	LINEAR FOOT (FEET)
ARCH	ARCHITECTURAL	LH	LEFT HAND
ASB	ASBESTOS	LHR	LEFT HAND REVERSE
ASPH	ASPHALT	LL	LIVE LOAD
AUTO	AUTOMATIC	LP	LOW POINT
BD	BOARD	MATL	MATERIAL
BLDG	BUILDING	MAX	MAXIMUM
BLK	BLOCKING	MBR	MEMBER
BLKG	BLOCKING	MECH	MECHANICAL
BM	BENCH MARK	MEMB	MEMBRANE
BO	BOTTOM	MFR	MANUFACTURER
BR	BUMPER RAIL	MH	MAN HOLE
BRG	BEARING	MIN	MINIMUM
BRK	BRICK	MISC	MISCELLANEOUS
BRZ	BRONZE	MOD	MODULAR
BSMT	BASEMENT	MON	MONITOR
BTU	BRITISH THERMAL UNIT	MR	MOISTURE RESISTANT
BUR	BURNELED ROOFING	MTD	MOUNTED
BV	BEVELED	MTL	METAL
CAB	CABINET	MULL	MULLION
CB	CATCH BASIN	N	NORTH
CC	CURICAL CURTAIN TRACK	NA	NOT APPLICABLE
CCU	CORONARY CARE UNIT	NC	NOT IN CONTRACT
CEM	CEMENT	NO	NUMBER
CF	CONTRACTOR FURNISHED	NO#	NONMIN
CFI	CONTRACTOR FURNISHED OWNER INSTALLED	NRC	NOISE REDUCTION COEFFICIENT
CG	CORNER GUARD	NTS	NOT TO SCALE
CHR	CHAIR RAIL	OA	OBSOLETE
CI	CAST IRON	OD	ON CENTER
CIR	CIRCLE	OFCI	OWNER FURNISHED CONTRACTOR INSTALLED
CJ	CONSTRUCTION JOINT	OFF	OFFICE
CLG	CEILING	OFOI	OWNER FURNISHED OWNER INSTALLED
CLO	CLOSET	OH	OVERHEAD
CLOS	CLOSURE	OPQ	OPAQUE
CLR	CLEAR	OPNG	OPENING
CMU	CONCRETE MASONRY UNIT	OPP	OPPOSITE
CO	CLEAN OUT	OPQ	OPPOSITE
COL	COLUMN	PACU	POST ANESTHESIA CARE UNIT
COLM	COMPOSITE FLOORING	PAR	PARALLEL
COND	CONCRETE	PARTN	PARTITION
CONF	CONFERENCE	PBD	PARTICLE BOARD
CONN	CONNECT (ION)	PC	PERSONAL COMPUTER
CONT	CONTINUOUS	PCT	PORCELAIN TILE
CONTR	CONTRACTOR	PERF	PERFORATED
CORR	CORRIDOR	PERIM	PERIMETER
CPT	CARPET	PLAM	PLASTIC LAMINATE
CR	CHAIR RAIL	PLAS	PLASTER
CR	CRASH RAIL	PLYWD	PLYWOOD
CS	CENTRAL STERILE	P+M	PATCH + MATCH
CSI	CONSTRUCTION SPECIFICATION	PNL	PANEL
CSMT	CASEMENT	POLY	POLYETHYLENE
CT	CERAMIC TILE	PR	PAIR
CW	COLD WATER	PRFAB	PREFABRICATED
CWT	CERAMIC WALL TILE	PRT	PRESSURE TREATED
DIA	DOUBLE ACTING	PSF	POUNDS PER SQUARE FOOT
DBL	DOUBLE	PT	PAINT
DEG	DEGREE	PTSTA	PNEUMATIC TUBE STATION
DEMO	DEMOLITION	PVC	POLYVINYL CHLORIDE
DEMOUNT	DEMOUNTABLE	PWC	PROTECTIVE WALL COVERING
DEP	DEPRESSED	QT	QUARRY TILE
DET	DETAIL	QTY	QUANTITY
DF	DRINKING FOUNTAIN	R	RISER
DG	DECORATIVE GLASS	RA	RETURN AIR
DH	DOUBLE HUNG	RAD	RADIUS
DIA	DIAMETER	RB	RUBBER BASE
DIAG	DIAGONAL	RD	ROOF DRAIN
DIM	DIMENSION	REF	REFRIGERATOR
DIV	DIVISION	REINF	REINFORCED
DN	DOWN	REQD	REQUIRED
DR	DOOR	REVISION	REVISION
DW	DISHWASHER	RH	RIGHT HAND
DWG	DRAWING	RHR	RIGHT HAND REVERSE
DWR	DRAWER	RM	ROOM
E	EAST	RO	ROUGH OPENING
EA	EMERGENCY DEPARTMENT	ROW	RIGHT OF WAY
ED	EXHAUST FAN	RP	RESIN PANEL
EF	EXTERIOR INSULATING	RUB RAIL	RUBBER
EIFS	EXTERIOR INSULATING FINISH SYSTEM	RUB	RUBBER
EJ	EXPANSION JOINT	RUBT	RUBBER TILE
EL	ELEVATION	RWC	RAINWATER CONDUCTOR
ELEC	ELECTRIC (AL)	RWP	RESILIENT WOOD PLANK
ELEV	ELEVATOR	S	SOUTH
EMERG	EMERGENCY	SCHED	SCHEDULE
ENCL	ENCLOSURE	SCWD	SOLID CORE WOOD
EO	EMERGENCY ELECTRICAL OUTLET	SEC	SECTION
EPS	EPOXY PAINT SYSTEM	SEG	SEGMENT
EXPS	EXTERIOR PAINT SYSTEM	SF	SQUARE FOOT
EQ	EQUAL	SHR	SHOWER
EQUIP	EQUIPMENT	SHT	SHEET
ETR	EXISTING TO REMAIN	SHTG	SHEATHING
EWC	ELECTRIC WATER COOLER	SM	SIMILAR
EXCAV	EXCAVATE	SPEC	SPECIFICATION
EXH	EXHAUST	SPKR	SPEAKER
EXIST	EXISTING	SQ	SQUARE
EXP	EXPANSION	SS	SERVICE SINK
EXT	EXTERIOR	SSM	SOLID SURFACE MATERIAL
FA	FIRE ALARM	SSS	SURGICAL SCRUB SINK
FAB	FABRICATED	SST	STAINLESS STEEL
FD	FLOOR DRAIN	ST	STONE
FE	FIRE EXTINGUISHER	STA	STATION
FEC	FIRE EXTINGUISHER CABINET	STD	STANDARD
FF EL	FINISH FLOOR ELEVATION	STC	SOUND TRANSMISSION CLASS
FHEC	FIRE HOSE & EXTINGUISHER CABINET	STL	STEEL
FHC	FIRE HOSE CABINET	STOR	STORAGE
FM	FINISH (E/D)	STRUC	STRUCTURAL, STRUCTURE
FLR	FLOOR	SURG	SURGERY
FLUOR	FLUORESCENT	SUSP	SUSPENDED
FM	FACTORY MUTUAL	SV	SHEET VINYL
FOC	FACE OF CONCRETE	SRV	SLIP RESISTANT VINYL
FOF	FACE OF FINISH	SYM	SYMMETRICAL
FOSS	FACE OF STUD	T	TOP AND BOTTOM
FPRF	FIREPROOF	T&G	TONGUE AND GROOVE
FRPL	FIRE RESISTANT TREATED	TEL	TELEPHONE
FRT	FIRE RETARDANT TREATED	TELEM	TELEMETRY
FT ()	FOOT / FEET	TEMP	TEMPERARY
FTB	FABRIC TACK BOARD	TERR	TERRAZZO
FTG	FOOTING	THK	THICK (NESS)
FURN	FURNISH, FURNITURE	THRES	THRESHOLD
FURR	FURRED, FURRING	TLT	TOILET
FUT	FUTURE	TOP	TOP OF CONCRETE
GALV	GALVANIZED	TOC	TOP OF CURB
GC	GENERAL CONTRACTOR	TOS	TOP OF STEEL
GLT	GLASS TILE	TOW	TOP OF WALK
GLZ	GLASS GLAZING	TRANSF	TRANSFORMER
GRD	GRADE	TV	TELEVISION
GYP	GYPSONUM BOARD, GYPSONUM WALLBOARD	UL	ULDERWRITERS LABORATORY
GWB	GYPSONUM WALLBOARD	UNEXCAV	UNEXCAVATED
HB	HOSE BIBB	UNFIN	UNFINISHED
HCC	HANDICAPPED	UNOT	UNLESS OTHERWISE NOTED
HCWD	HOLLOW CORE WOOD	URINAL	URINAL
HDR	HEAVY DUTY	VAR	VARNISH
HDR	HAND RAIL	VAT	VINYL ASBESTOS TILE
HDW	HARDWARE	VBL	VINYL BASE
HDWR	HARDWOOD	VCB	VINYL COVE BASE
HM	HOLLOW METAL	VCT	VINYL COMPOSITION TILE
HORIZ	HORIZONTAL	VERT	VERTICAL
HP	HIGH POINT	VEST	VESTIBULE
HR	HAND RAIL	VIF	VERIFY IN FIELD
HT	HEIGHT	VVC	VINYL WALL COVERING
HTG	HEATING	W	WEST
HVAC	HEATING, VENTILATING AND AIR CONDITIONING	W/O	WITHOUT
HW	HOT WATER	WC	WATER CLOSET
ICU	INTENSIVE CARE UNIT	WD	WOOD
ID	INSIDE DIAMETER	WIDW	WINDOW
IN (")	INCHES	WI	WROUGHT IRON
INCL	INCLUDING	WOM	WALK OFF MAT
INFO	INFORMATION	WT	WEIGHT
INSUL	INSULATE, INSULATION	WWF	WELDED WIRE FABRIC
INT	INTERIOR	WWM	WELDED WIRE MESH
INV	INVERT	YARD	YARD
IPS	INTERIOR PAINT SYSTEM		
IVT	INTRAVENOUS (IV) TRACK		

ARCHITECTURAL SYMBOLS

	CENTERLINE		NEW PARTITION		INTERIOR ELEVATION TAG		WINDOW TAG
	PROPERTY/REFERENCE LINE		EXISTING PARTITION		PLAN OR ENLARGED DETAIL TAG		CURTAINWALL TAG
	FLOOR LINE ELEVATION		PARTITION TO BE DEMOLISHED		BUILDING OR WALL SECTION TAG		BORROWED LIGHT TAG
	HIDDEN OR FUTURE WORK OR WORK TO BE REMOVED		EXISTING PARTITION		EXTERIOR ELEVATION TAG		LOUVER TAG
	SECTION LINE		DRYWALL TO BE DEMOLISHED		NEW COLUMN LINE REFERENCE		STOREFRONT TAG
	MATCH LINE		NEW SWING DOOR (90 Deg.)		EXISTING COLUMN LINE REFERENCE		GENERAL NOTES
	SPOT ELEVATION NEW WORK		NEW SWING DOOR (180 Deg.)		OFFICE		TOILET ACCESSORIES TAG
	BENCH MARK ELEVATION		NEW DOUBLE ACTING SWING DOOR w/ EMERGENCY RELEASE HARDWARE		PARTITION TYPE TAG		WALL TAG
	CHANGE IN FLOOR OR CEILING ELEVATION (PLAN VIEW)		EXISTING DOOR TO REMAIN		ELEVATION TAG ON SECTION		DEMOLITION NOTES
	NEW GRADING CONTOUR		EXISTING DOOR TO BE REMOVED		DOOR NUMBER TAG		FURNITURE OR EQUIPMENT FURNISHED BY OWNER
	EXISTING GRADING CONTOUR				BR-1, CR-1, KR-1, HR-1		CORNER GUARD
	FENCE				FEC		AUTOMATIC DOOR PUSH PLATE

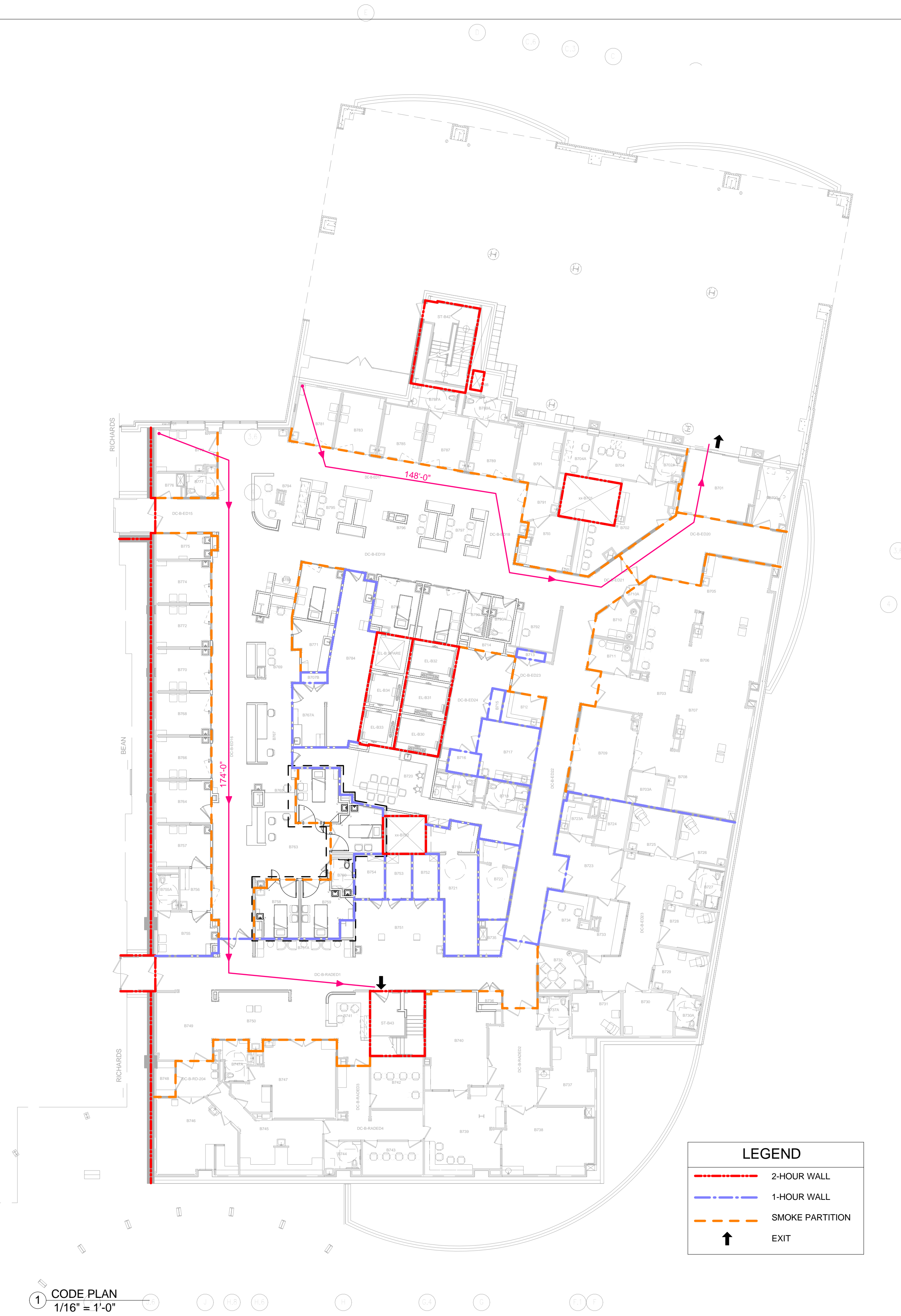
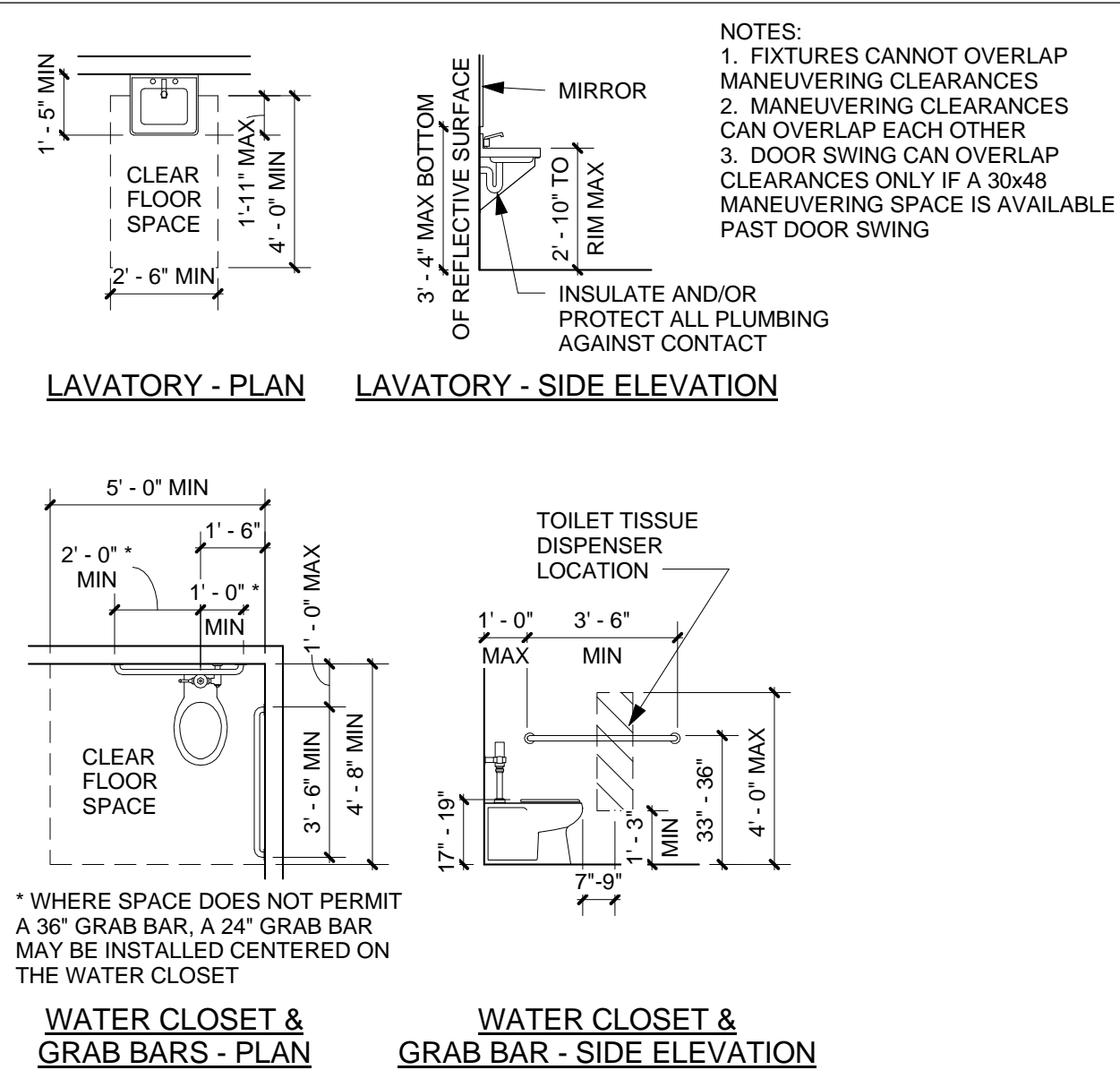
DOOR SWING CLEARANCES



MATERIAL LEGEND

	TOPSOIL		CONCRETE BLOCK
	ROOF BALLAST		BRICK
	CRUSHED GRAVEL		PLASTER/MORTAR, PRECAST CONC, CONC OR EIFS IN ELEVATION
	CONCRETE		STUCCO/MORTAR
	CONCRETE BLOCK		STEEL
	BRICK		ALUMINUM
	PLASTER/MORTAR, PRECAST CONC, CONC OR EIFS IN ELEVATION		SHEET METAL IN ELEVATION
	STUCCO/MORTAR		MARBLE
	STEEL		ACOUSTICAL TILE
	ALUMINUM		WOOD BLOCKING OR CONTINUOUS NAILERS
	SHEET METAL IN ELEVATION		WOOD SHIM
	MARBLE		HARDWOOD TRIM
	ACOUSTICAL TILE		PLYWOOD
	WOOD BLOCKING OR CONTINUOUS NAILERS		BATT INSULATION
	WOOD SHIM		RIGID INSULATION
	HARDWOOD TRIM		WATERPROOF MEMBRANE
	PLYWOOD		GLASS (LARGE SCALE)
	BATT INSULATION		GYPSONUM BOARD
	RIGID INSULATION		CERAMIC TILE
	WATERPROOF MEMBRANE		
	GLASS (LARGE SCALE)		
	GYPSONUM BOARD		
	CERAMIC TILE		

ADA TOILET CLEARANCES



morris switzer
 environments for health

Williston, Vermont
 Boston, Massachusetts
 Portland, Maine
 163 Middle Street
 Portland, ME 04101
 t 207.773.8840
 f 207.773.8840
 morris@switzer.com

© 2014 MorrisSwitzer

CHARLES J. REZZO, JR.
 LICENSED ARCHITECT
 STATE OF MAINE

FITZMEYER & TOCCI
 ASSOCIATES, INC.
 MECHANICAL / ELECTRICAL ENGINEERING
 Thoughtful Practical Engineering
 92 Montvale Ave., Suite 4100
 Stoneham, MA 02150
 Tel: 781-481-0210
 Fax: 781-481-0230
 Web: www.f-t.com

Project North

Key Plan, N.T.S.

Revision	Date	No

MAINE MEDICAL CENTER
 22 Bramhall Street, Portland, ME 04102

ED Psych Exam Room Renovations

MorrisSwitzer Project Number 201451
 Date 1.27.2017
 Scale As indicated
 Sheet Title and Number

ABBREVIATIONS, STANDARDS & CODE PLAN

AG-1

2/1/2017 1:01:04 PM