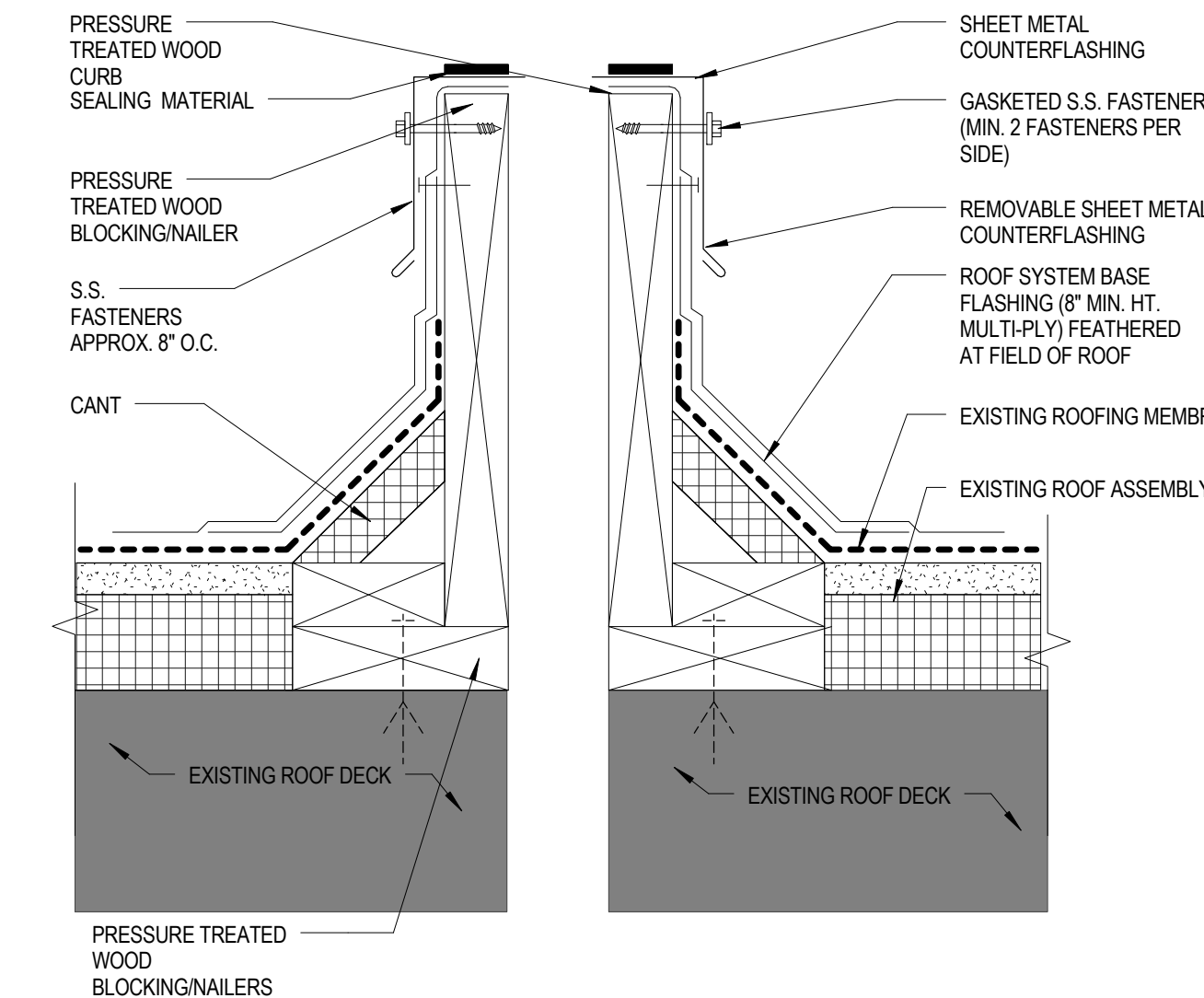
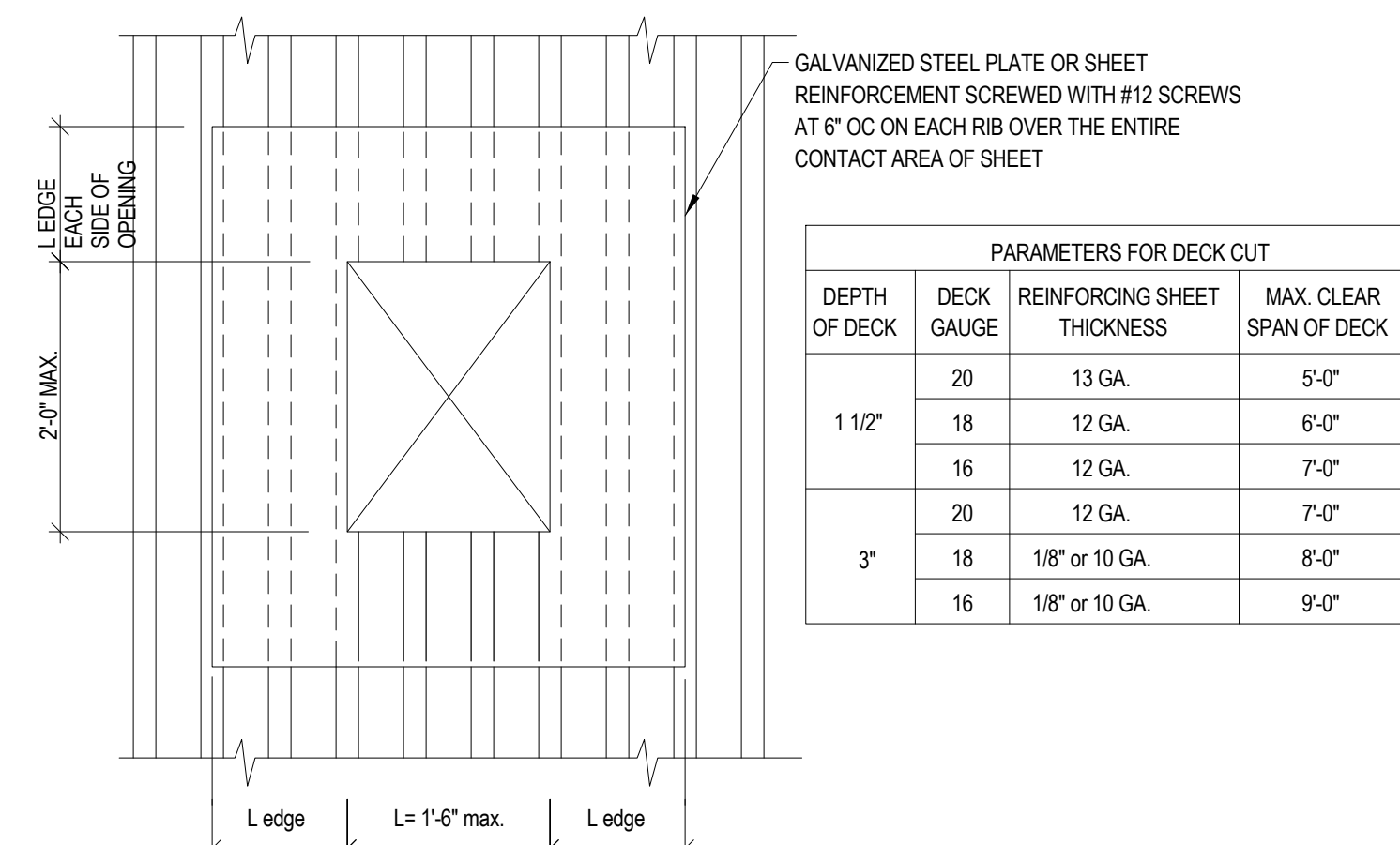


C2 ROOF DETAIL - PIPE FLASHING
3" = 1'-0"



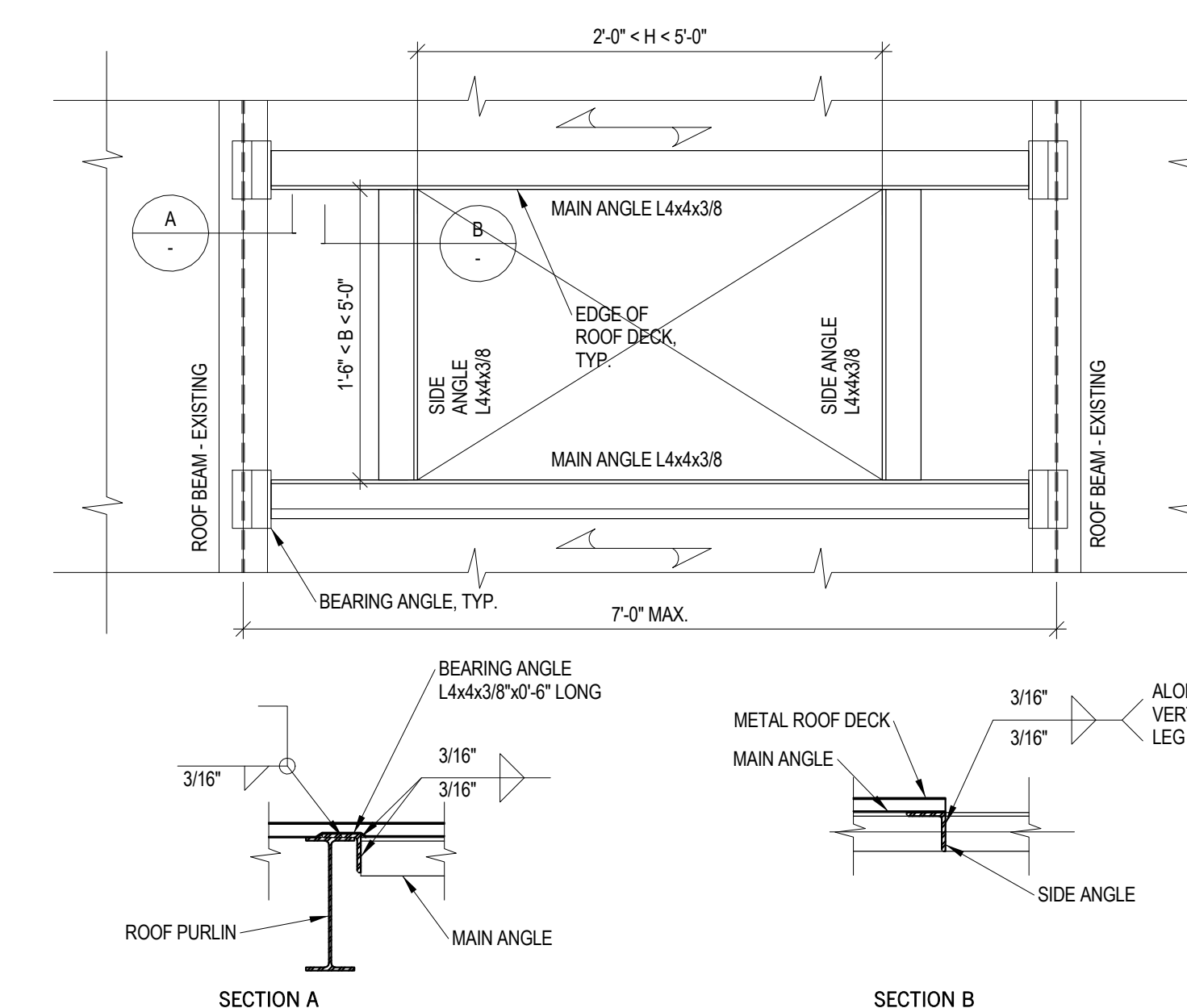
C1 ROOF DETAIL - DUCT PENETRATION CURB
3" = 1'-0"

NOTES:
1. WHEN POSSIBLE, THE MECHANICAL UNITS SHOULD NOT BE SET UNTIL THE ROOF MEMBRANE AND FLASHING HAVE BEEN INSTALLED.



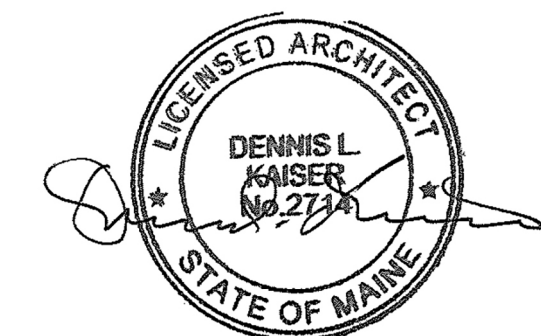
ROOF DECK OPENING REINFORCEMENT

A2 ROOF DECK OPENING REINFORCEMENT
3/4" = 1'-0"



NOTES:
1. ADVISE SER IF OPENING EXCEEDS DIMENSION LIMITS SHOWN.
2. ROOF DECK MUST BE FASTENED TO SUBFRAMING ANGLES AS SHOWN IN TS-28.
3. TOPS OF MAIN AND SIDE ANGLES ARE FLUSH WITH TOP OF ROOF STEEL.
4. SUBFRAMING IS DESIGNED FOR EQUIVALENT 100 PSF LIVE LOAD AND NET 30 PSF WIND SUCTION.
5. CONTRACTOR MAY ELECT TO OMIT BEARING ANGLES AND OPE VERTICAL LEG OF MAIN ANGLES SUCH THAT THEY BEAR AT LEAST 4" ON TOP FLANGE OF ROOF BEAMS.
6. CONTRACTOR MAY ELECT TO FABRICATE ANGLE FRAMES IN FIELD.

SUBFRAMING FOR ROOF OPENING LARGER THAN 2'-0" x 1'-6"



Revisions

ISSUED FOR PERMIT NO.	09.15.16
ISSUE DATE	09.15.16
Sheet Information	
Date	September 15, 2016
Job Number	1521XXX-XXXX
Drawn	Author
Checked	Checker
Approved	Approver

**ROOF
PENETRATION
AND SUPPORT
DETAILS**

Sheet
A11-50