

**CODE COMPLIANCE PLAN
LEGEND**

- SMOKE BARRIER WITH TWO HOUR MIN. FIRE RATED CONSTRUCTION
- SMOKE BARRIER WITH ONE HOUR MIN. FIRE RATED CONSTRUCTION
- LIMIT TRANSFER OF SMOKE (NO FIRE-RESISTANT RATING)
- TWO HOUR FIRE BARRIER
- ONE HOUR FIRE BARRIER
- TRAVEL DISTANCE - LONGEST TO AN EXIT
- FIRE EXTINGUISHER & CABINET MAX TRAVEL DISTANCE: 75' - PER TABLE 906.3(1)
- FEC FIRE EXTINGUISHER & CABINET
- EXTENT OF SUITE
- OUT OF SCOPE
- EXIT EXIT / STAIR
- 200' EGRESS PATH AND TRAVEL DISTANCE
- MHO MAGNETIC HOLD OPEN
- EXIT LOCATION - OCCUPANT LOAD AND WIDTH (IN INCHES)
- WIDTH REQUIRED | ACTUAL POPULATION
- WIDTH PROVIDED | ALLOWED POPULATION
- EXIT LIGHT WITH ARROW DIR.
- EXIT EXIT STAIR
- R DOOR RESISTS THE PASSAGE OF SMOKE

**OCCUPANT LOAD
CALCULATIONS FOR LEVEL 6**

OCCUPANCY	SQ. FTG.	CODE	OCC. LOAD FACTOR	OCC. LOAD	REQ. EXIT WIDTH/OCC.	TOTAL REQ. EXIT WIDTH	TOTAL WIDTH PROVIDED
HEALTH CARE	565	IBC	100 SFI/OCC	6	0.15	0.3"	34"
HEALTH CARE	565			6		0.3"	34"

GENERAL CODE SUMMARY

BASED ON OCCUPANCY TYPE I2 INSTITUTIONAL WITH SPRINKLERS:

PER SECTION 1014.3
COMMON PATH OF EGRESS TRAVEL: 100 FEET

PER TABLE 1016.1
MAXIMUM ALLOWABLE TRAVEL DISTANCE: 300 FEET

PER SECTION 1017.3
MAXIMUM ALLOWABLE DEAD-END DISTANCE: 50 FEET

PER TABLE 1004.1.1
FLOOR AREA PER OCCUPANT: (BUSINESS) 100 GROSS SF

PER TABLE 1005.1
ALLOWABLE DOOR CAPACITY:
(0.15 INCHES/OCCUPANT)
226 @ 34" DOOR
453 @ 48" DOOR

PER TABLE 1005.1
ALLOWABLE STAIR CAPACITY:
(0.3 INCHES/OCCUPANT)
160 @ 48" STAIR

**CODE COMPLIANCE PLAN
GENERAL NOTES**

ADDRESS:
Maine Medical Center
22 Bramhall Street
Portland, ME 04102

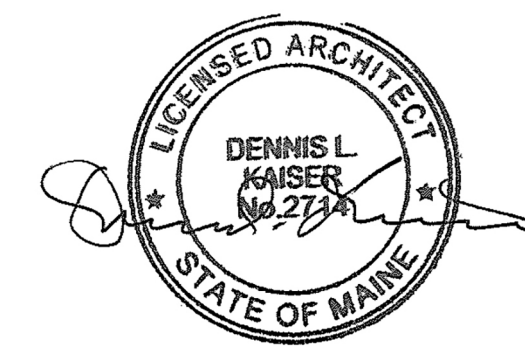
APPLICABLE CODES AND STANDARDS:

Code Type	Applicable Code (Model Code Basis)
Building	2009 International Building Code
Fire Prevention	NFPA 101: Life Safety Code, 2009 Edition Chapter 18: New Health Care Occupancies Chapter 19: Existing Health Care Occupancies Portland Fire Prevention Fire Code 2006 NFPA 1 Required Fire Protection Systems: NFPA 13 sprinkler system (2009 IBC 407.5) Fire alarm system (2009 IBC 407.6) Standpipe system (2009 IBC 905.3.1) Fire extinguishers (2009 IBC 906.1)
Accessibility	Maine Human Rights Commission
Electrical	2011 National Electrical Code
Mechanical	ASHRAE 62.1 - 2007 ASHRAE 62.2 - 2007
Plumbing	2009 Uniform Plumbing Code (with State Amendments)
Energy Conservation	2009 International Energy Conservation Code
Joint Commission	NFPA 101 Applicable Code Year: 2000 Edition

CONSTRUCTION TYPE:
TYPE IIA (TABLE 601)

FIRE SPRINKLERED THROUGHOUT:
YES.

OCCUPANCY GROUPS:
OCCUPANCY TYPE I2 INSTITUTIONAL



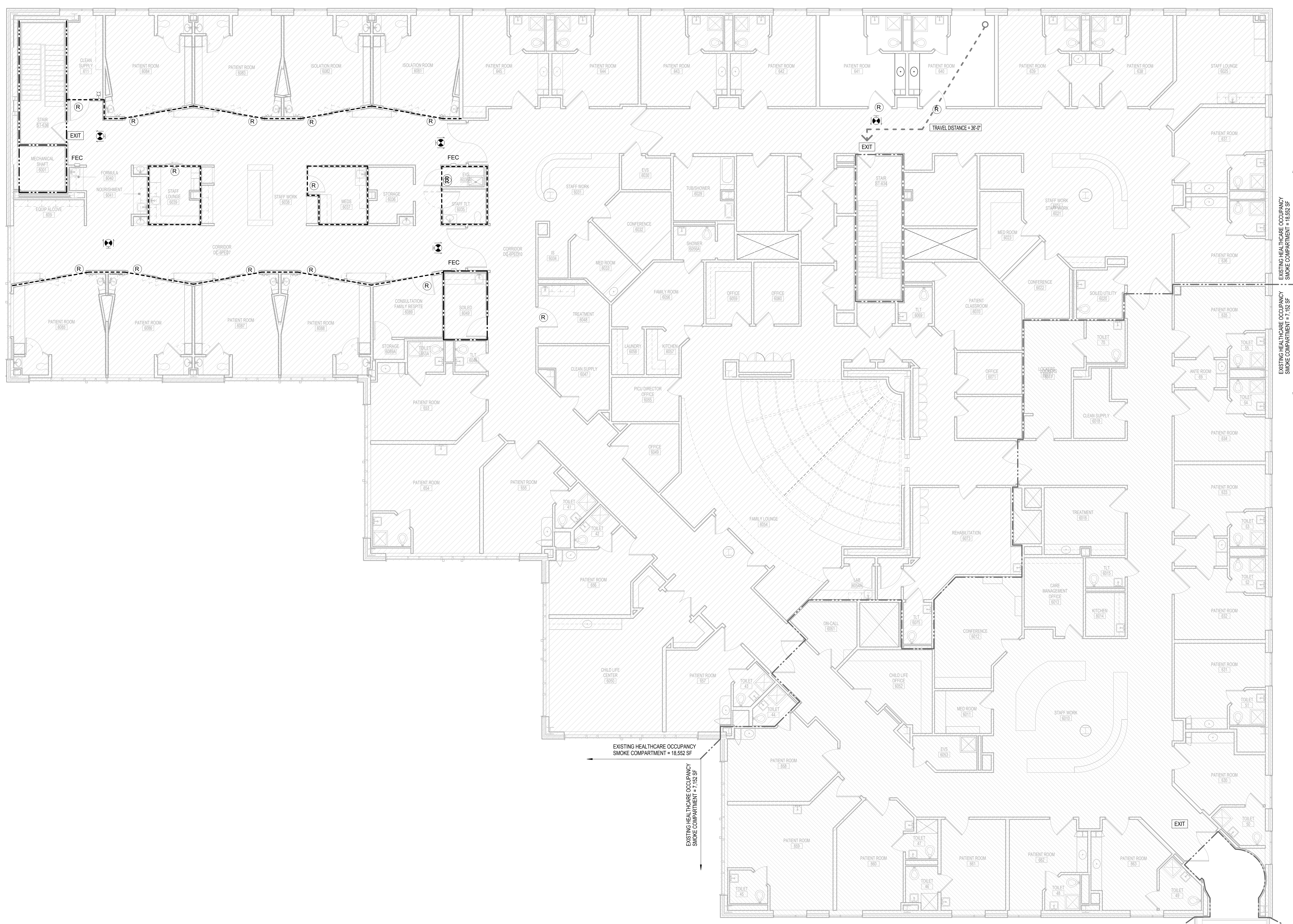
Revisions

NO.	ISSUED FOR PERMIT	DATE
	09.15.16	

Sheet Information
Date: September 15, 2016
Job Number: 1521XXJXX
Drawn: Author
Checked: sc
Approved: Approver
Title

**LIFE SAFETY PLAN
LEVEL 6**

**Sheet
A01-06**



1 LEVEL 06 - LIFE SAFETY PLAN
1/8" = 1'-0"