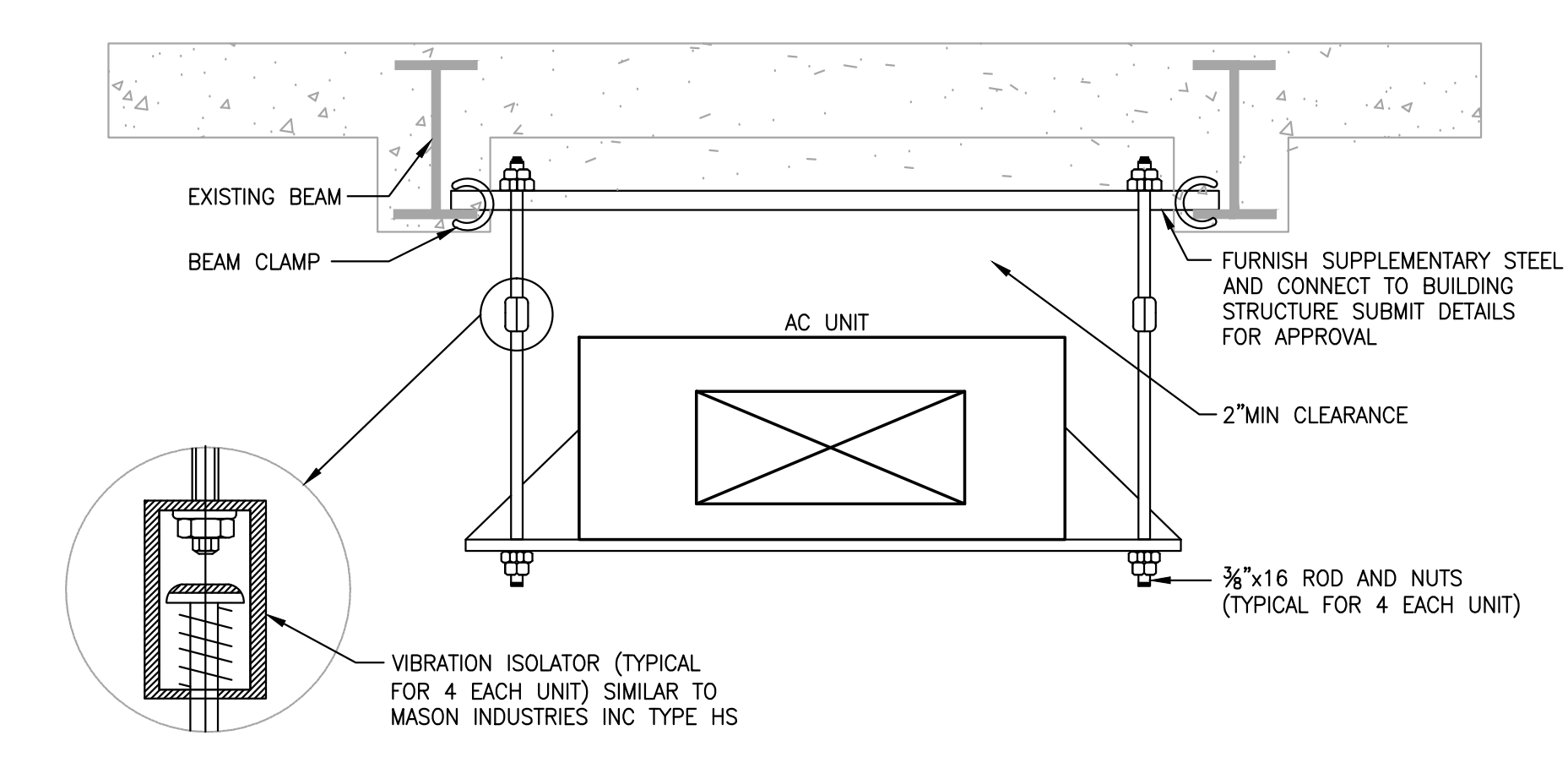
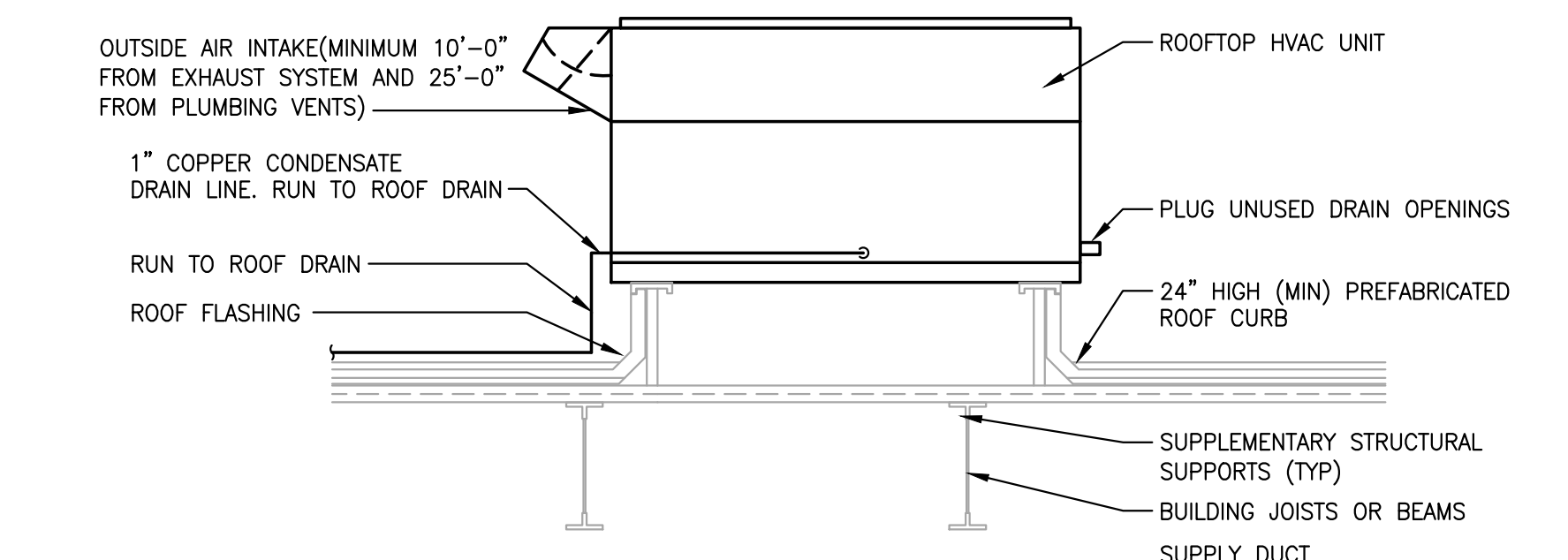


NOTES:
1. FOR 4-PIPE UNIT, DUPLICATE CHILLED WATER PIPING HOOK-UP FOR HOT WATER COIL.

HORIZONTAL FAN COIL UNIT PIPING DETAIL

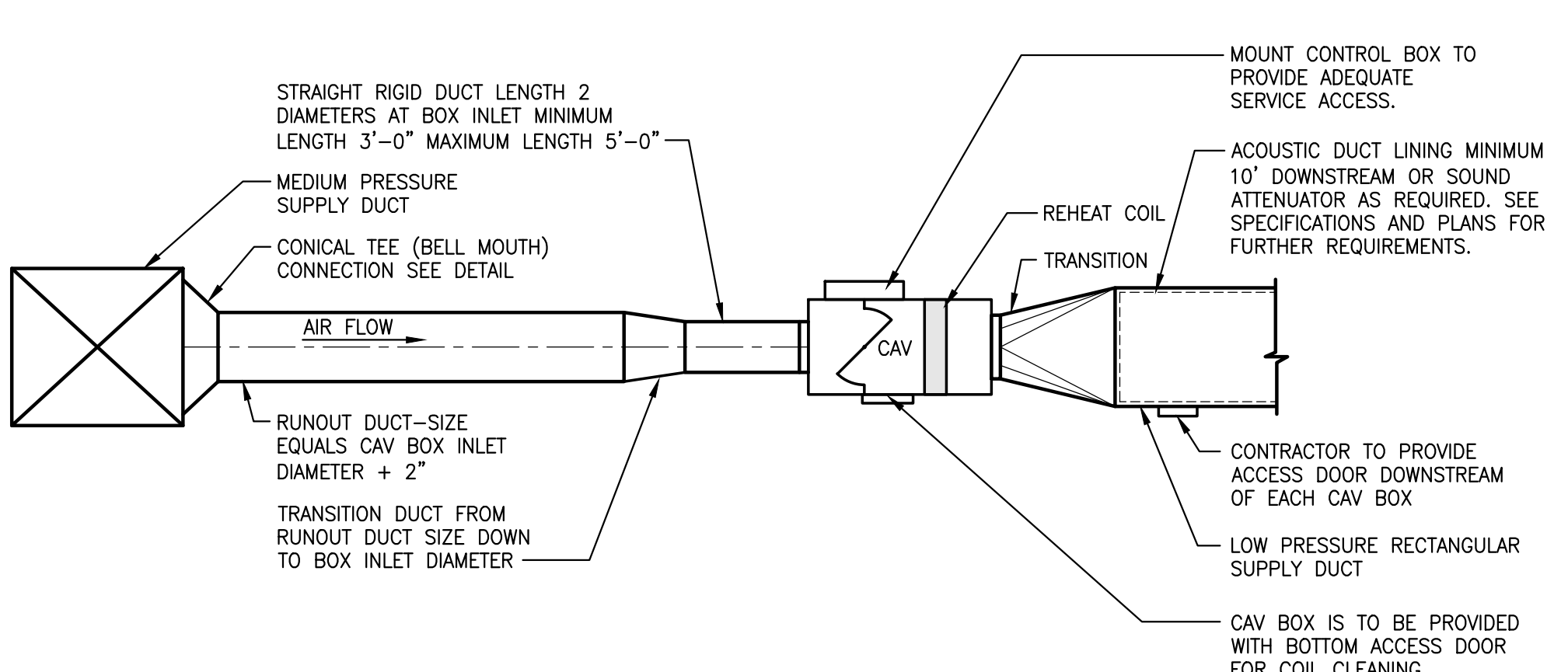


DETAIL FOR SUSPENDING A.C. UNIT



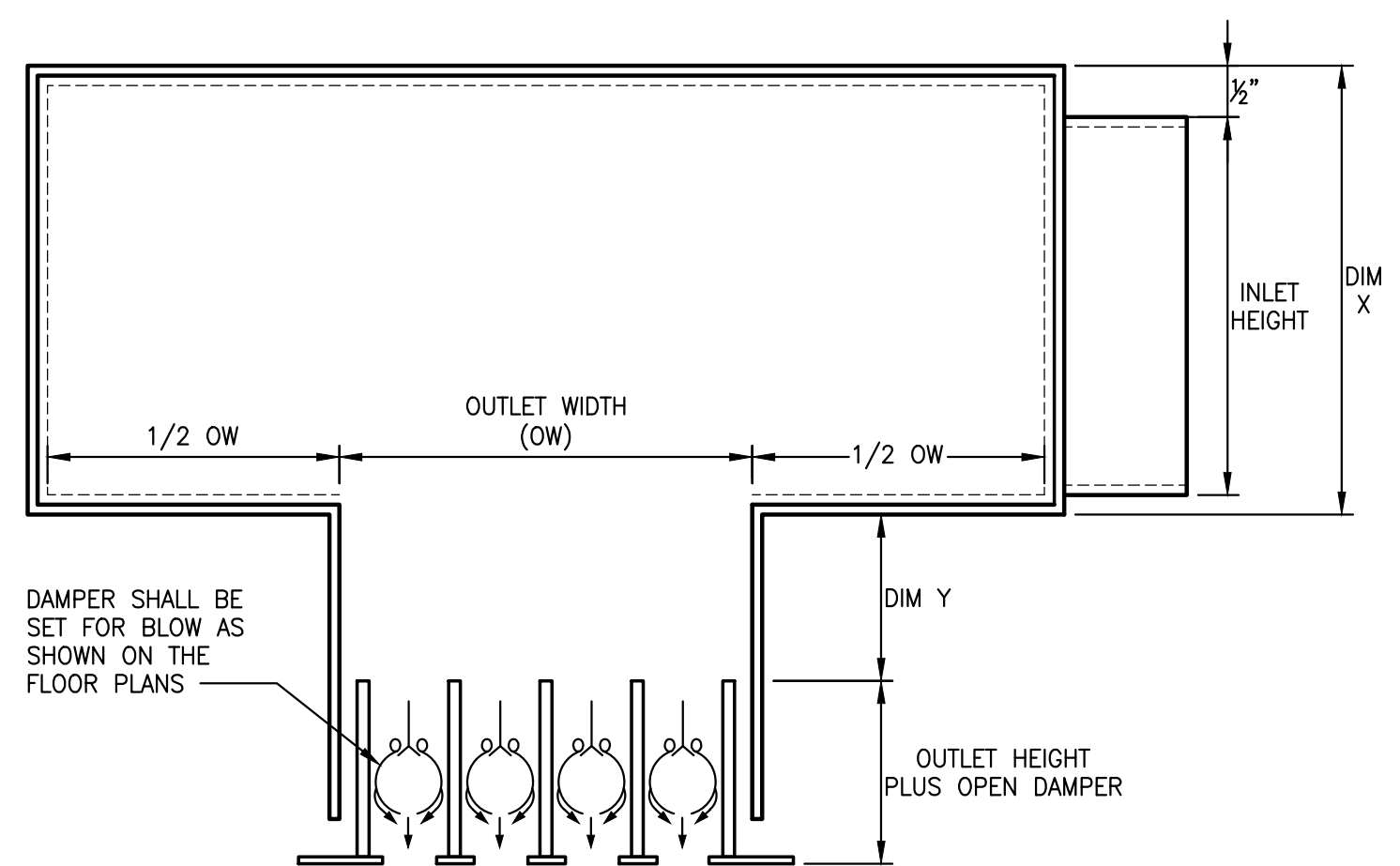
GENERAL NOTES:
1. CONTRACTOR SHALL FURNISH AND INSTALL ALL ROOF CURBS.
2. CONTRACTOR SHALL PAY FOR ALL ROOF OPENINGS. CONTRACTOR SHALL PERFORM ALL WORK REQUIRED TO PROVIDE ROOF OPENINGS.
3. CONTRACTOR SHALL FURNISH, INSTALL AND/OR PAY FOR ALL SUPPLEMENTARY STRUCTURAL SUPPORTS REQUIRED TO FURNISH AND INSTALLED ROOF MOUNTED EQUIPMENT.
4. CONTRACTOR TO RUN CONDENSATE DRAIN LINE TO NEAREST ROOF DRAIN WITH USE OF PROPER ROOF SUPPORTS, ADEQUATE DRAINAGE.
5. ALL PREFABRICATED ROOF CURBS SHALL BE A MINIMUM OF 24\"/>

ROOFTOP A.C. UNIT INSTALLATION



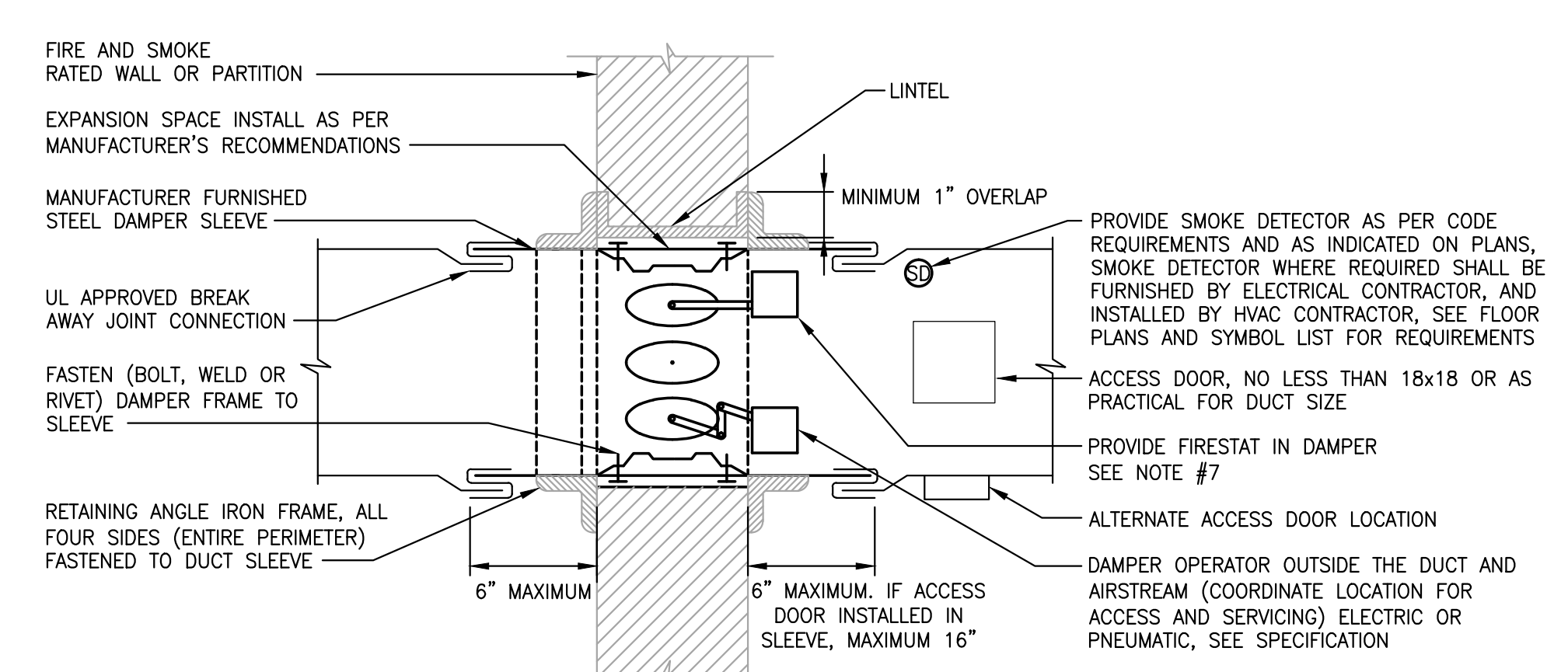
NOTES:
1. THE OPERATION OF VARIABLE VOLUME TERMINAL UNITS ARE AFFECTED BY EXCESSIVE TURBULENCE ON THE ENTERING SIDE OF EACH TERMINAL UNIT THEREFORE, TERMINAL UNITS MUST NOT BE INSTALLED TOO CLOSE TO MAIN DUCTS, ELBOWS AND FITTINGS.
2. WHEN MINIMUM UPSTREAM STRAIGHT DUCT CONNECTION TO TERMINALS AS INDICATED ABOVE CANNOT BE MAINTAINED, PROVIDE ORIFICE PLATE, STRAIGHTENING VANES OR OTHER DEVICE AS RECOMMENDED BY TERMINAL UNIT MANUFACTURER AND SUBMIT TO ENGINEER FOR REVIEW PRIOR TO INSTALLATION.
3. MANUFACTURER OF TERMINAL UNIT SHALL PROVIDE CONTROLS ON LEFT OR RIGHT SIDE AS REQUIRED BY FIELD CONDITIONS.
4. ARRANGE ACCESS TO PERMIT EASY FIELD BALANCE AND MAINTENANCE OF TERMINAL UNIT.

TERMINAL REHEAT BOX CONNECTIONS (CAV OR VAV)



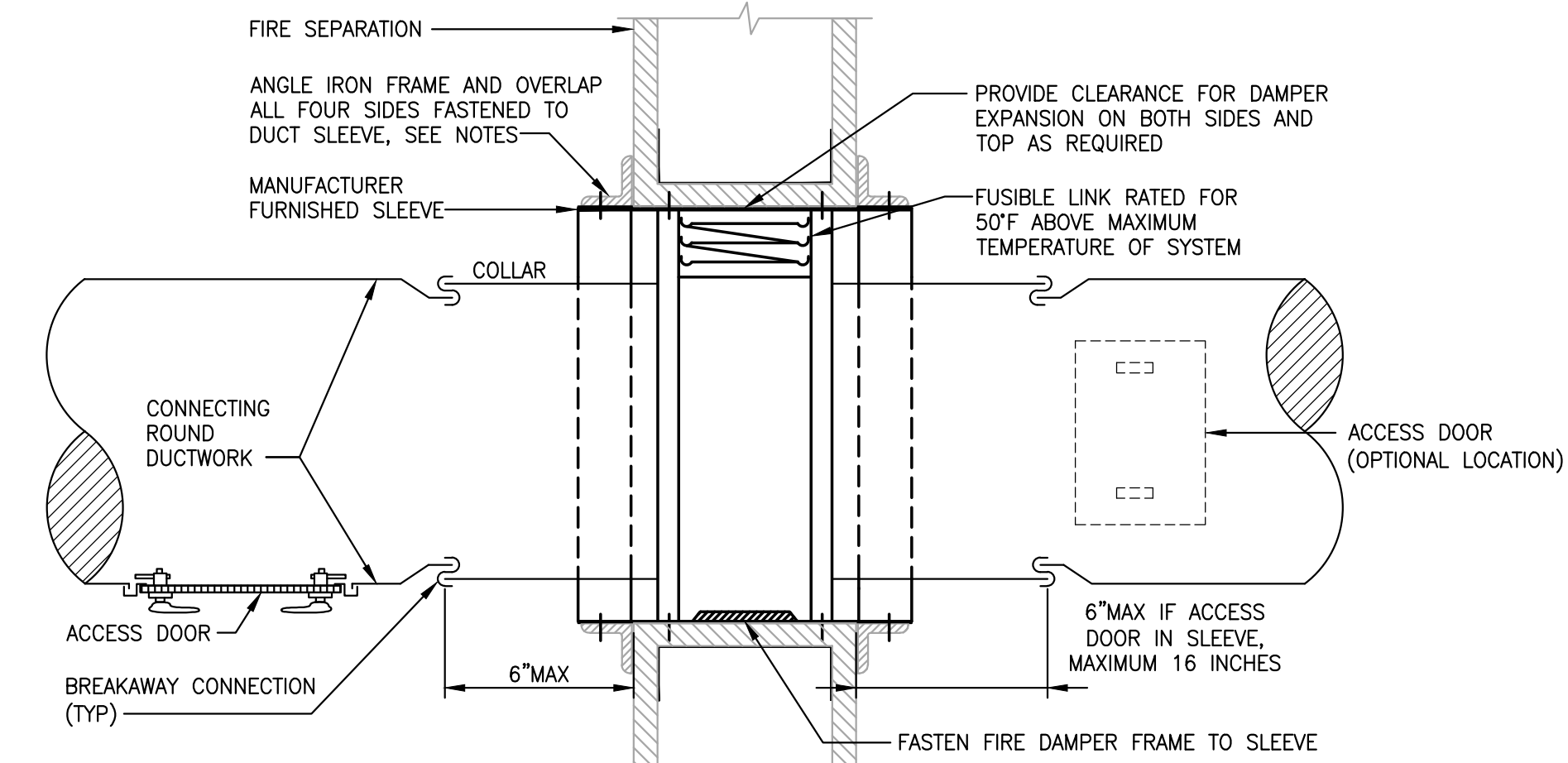
FOR OUTLET WIDTHS UP TO 6\"/>

LINEAR DIFFUSER PLENUM DETAIL



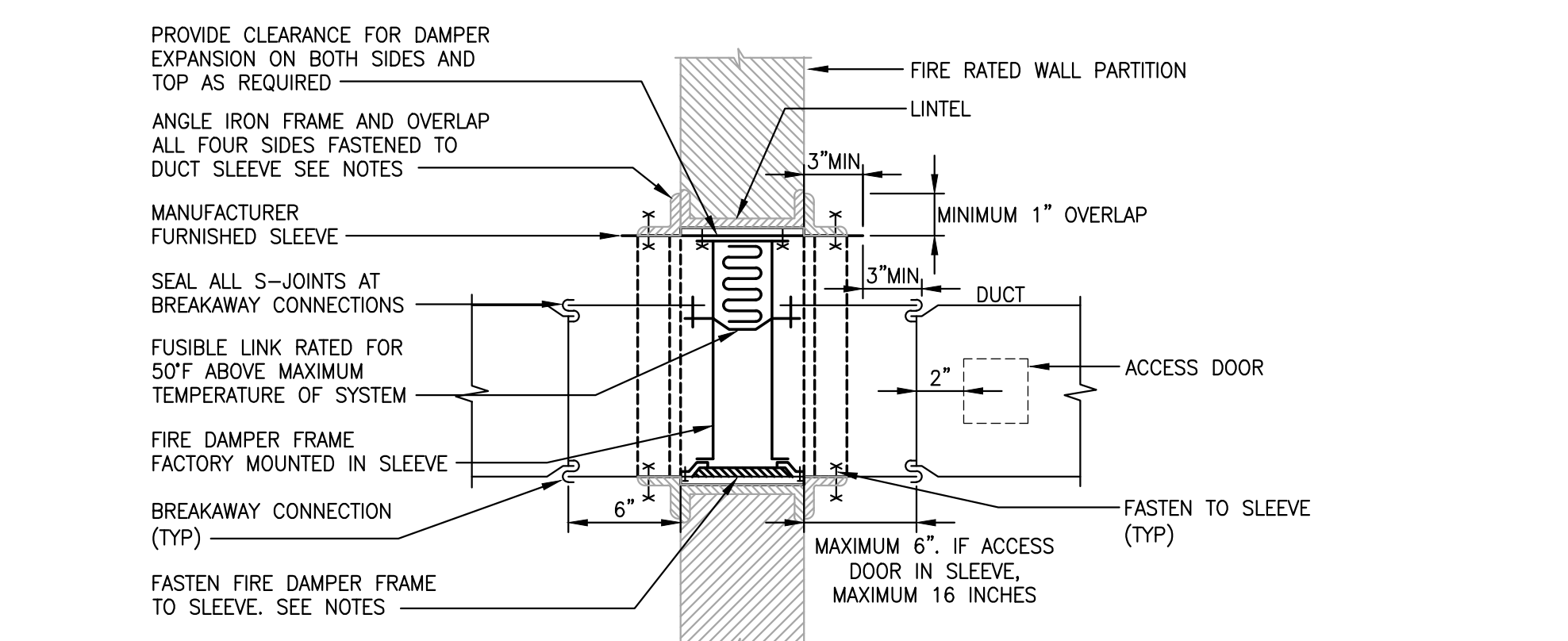
GENERAL NOTES:
1. DAMPER TO BE UL LABELED NFPA 90A, BSA AND MEA APPROVED.
2. NFPA APPROVED INSTALLATION DETAILS TO BE PART OF SUBMISSION OF COMBINATION FIRE & SMOKE DAMPER FOR APPROVAL, WHICH SHALL MEET NFPA STANDARD 90A AND SHALL BE BSA APPROVED.
3. DETAILS SHOWN ARE FOR COMBINATION FIRE AND SMOKE DAMPERS IN HORIZONTAL DUCTWORK, FOR DAMPERS IN VERTICAL DUCTWORK, DETAIL IS SIMILAR. VERTICAL DUCTS WITH HORIZONTAL DAMPERS ARE TO BE SPRING LOADED TYPE.
4. ACCESS DOOR IS SHOWN IN SIDE OF DUCT.
5. DETAIL FOR SMOKE DAMPER SHALL BE SIMILAR TO COMBINATION DAMPER EXCEPT DELETE FIRESTAT IN DAMPER.
6. THIS DETAIL IS A GUIDE ONLY. INSTALL DAMPER IN ACCORDANCE WITH MANUFACTURER'S RECOMMENDATIONS AND UL LISTING.
7. THE HVAC CONTRACTOR SHALL PROVIDE ALL DEVICES RELAYS END SWITCHES, E/P SWITCHES, CONTROL COMPONENTS, AIR PIPING, POWER WIRING, CONTROL WIRING AND INTERLOCK WIRING AS REQUIRED TO ACCOMPLISH THE SEQUENCE OF OPERATION FOR THESE DAMPERS.
8. RETAINING ANGLES MUST OVERLAP THE FIREWALL 1\"/>

COMBINATION FIRE AND SMOKE DAMPER WITH FIRESTAT



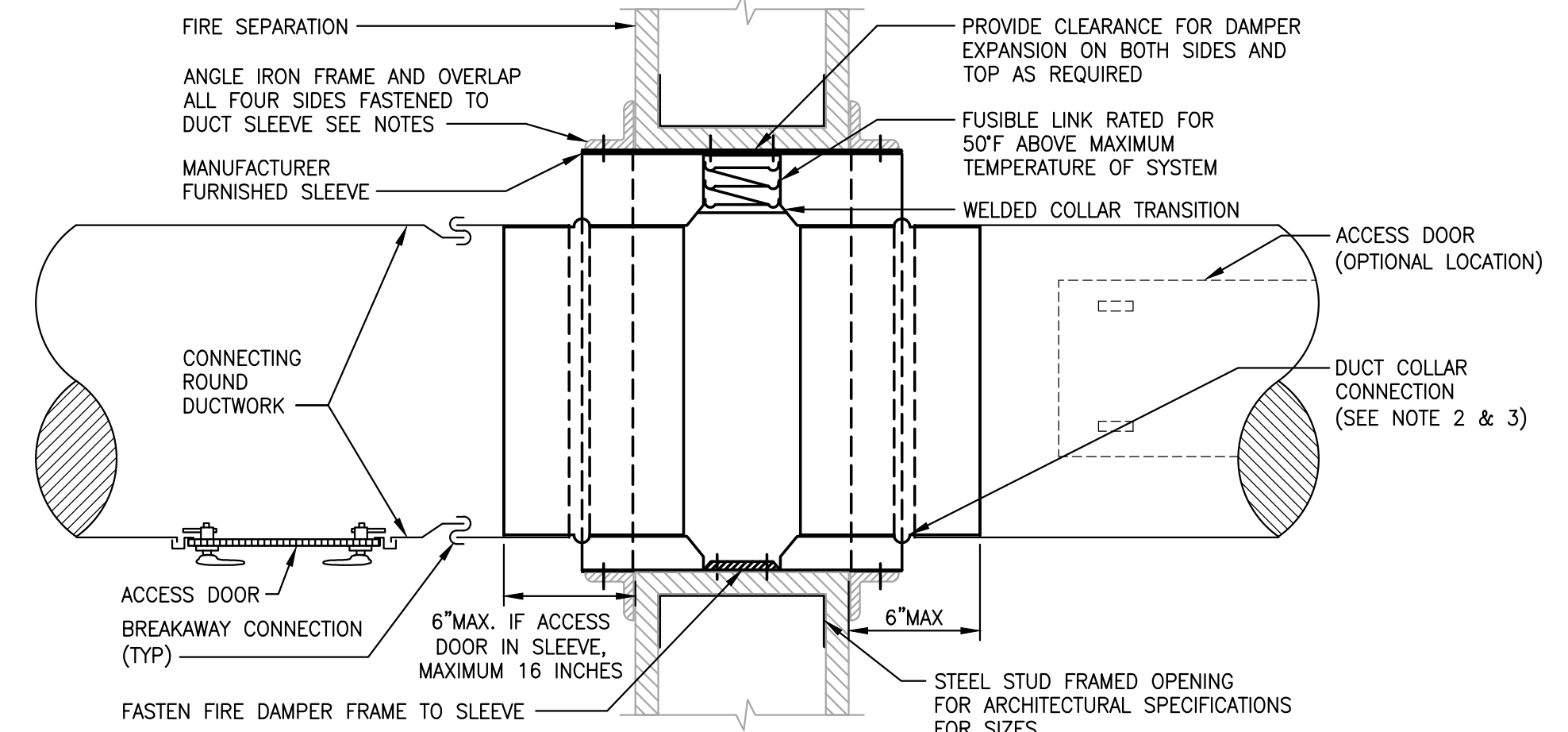
GENERAL NOTES:
1. DAMPER TO BE UL LABELED NFPA 90A, BSA AND MEA APPROVED.
2. NFPA APPROVED INSTALLATION DETAILS TO BE PART OF SUBMISSION OF FIRE DAMPER FOR APPROVAL, WHICH SHALL MEET NFPA STANDARD 90A AND SHALL BE BSA APPROVED.
3. DETAILS SHOWN ARE FOR FIRE DAMPERS IN HORIZONTAL DUCTWORK, FOR DAMPERS IN VERTICAL DUCTWORK, DETAILS SIMILAR EXCEPT DAMPERS ARE TO BE SPRING LOADED.
4. ACCESS DOOR IS SHOWN IN SIDE OF DUCT; IF FUSIBLE LINK IS MORE ACCESSIBLE FROM BOTTOM OF DUCT RELOCATE ACCESS DOOR.
5. UL APPROVED BREAKAWAY SLIP JOINT CONNECTION SHALL BE USED.
6. THIS DETAIL IS A GUIDE ONLY. INSTALL FIRE DAMPER IN ACCORDANCE WITH MANUFACTURER'S RECOMMENDATIONS AND UL LISTING.
7. RETAINING ANGLES MUST OVERLAP THE FIRE WALL 1\"/>

BRANCH OR MAIN ROUND DUCT WITH TYPE "B" FIRE DAMPER - DETAIL



GENERAL NOTES:
1. DAMPER TO BE UL LABELED NFPA 90A, BSA AND MEA APPROVED.
2. NFPA APPROVED INSTALLATION DETAILS TO BE PART OF SUBMISSION OF FIRE DAMPER FOR APPROVAL, WHICH SHALL MEET NFPA STANDARD 90A AND SHALL BE BSA APPROVED.
3. DETAILS SHOWN ARE FOR FIRE DAMPERS IN HORIZONTAL DUCTWORK, FOR DAMPERS IN VERTICAL DUCTWORK, DETAILS SIMILAR EXCEPT DAMPERS ARE TO BE SPRING LOADED.
4. ACCESS DOOR IS SHOWN IN SIDE OF DUCT; IF FUSIBLE LINK IS MORE ACCESSIBLE FROM BOTTOM OF DUCT RELOCATE ACCESS DOOR.
5. UL APPROVED BREAKAWAY SLIP JOINT CONNECTION SHALL BE USED.
6. THIS DETAIL IS A GUIDE ONLY. INSTALL FIRE DAMPER IN ACCORDANCE WITH MANUFACTURER'S RECOMMENDATIONS AND UL LISTING.
7. RETAINING ANGLES MUST OVERLAP THE FIRE WALL 1\"/>

BRANCH OR MAIN DUCT WITH TYPE "B" FIRE DAMPER-DETAIL



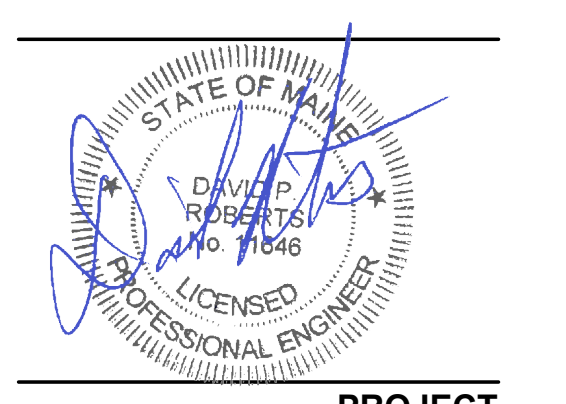
GENERAL NOTES:
1. DAMPER TO BE UL LABELED NFPA 90A, BSA AND MEA APPROVED.
2. NFPA APPROVED INSTALLATION DETAILS TO BE PART OF SUBMISSION OF FIRE DAMPER FOR APPROVAL, WHICH SHALL MEET NFPA STANDARD 90A AND SHALL BE BSA APPROVED.
3. DETAILS SHOWN ARE FOR FIRE DAMPERS IN HORIZONTAL DUCTWORK, FOR DAMPERS IN VERTICAL DUCTWORK, DETAILS SIMILAR EXCEPT DAMPERS ARE TO BE SPRING LOADED.
4. ACCESS DOOR IS SHOWN IN SIDE OF DUCT; IF FUSIBLE LINK IS MORE ACCESSIBLE FROM BOTTOM OF DUCT RELOCATE ACCESS DOOR.
5. UL APPROVED BREAKAWAY SLIP JOINT CONNECTION SHALL BE USED.
6. THIS DETAIL IS A GUIDE ONLY. INSTALL FIRE DAMPER IN ACCORDANCE WITH MANUFACTURER'S RECOMMENDATIONS AND UL LISTING.
7. RETAINING ANGLES MUST OVERLAP THE FIRE WALL 1\"/>

ROUND SUPPLY DUCT WITH TYPE "C" FIRE DAMPER (HIGH PRESSURE)-DETAIL

225 Franklin Street, Suite 1100
Boston, MA 02110
1617.478.0200
1617.478.0221
www.perkinswill.com

CONSULTANTS
MEPP
AKF GROUP LLC
99 Bedford St., 2nd Floor
Boston, MA 02111
1617.737.1111
1617.737.4311

STRUCTURAL
SGH INC.
41 Seyon St.
Waltham, MA 02453
1781.907.9000
1781.907.9009



PROJECT
ACCU RELOCATION
22 Bramhall Street
Portland, Maine 04102

Maine Medical Center
MaineHealth

MAINE MEDICAL CENTER
22 Bramhall Street
Portland, Maine 04102

06.24.2016
ISSUE CHART

NO.	ISSUE	DATE
1	ISSUED FOR PERMIT	06.24.2016
Job Number	B160089-000	
Checked	DPR	
Approved		

TITLE
MECHANICAL DETAILS

SHEET NUMBER

M00-21

Copyright © 2016 Perkins+Will

SAVE DATE: 5/27/2016 5:11 PM
 PLOT DATE: 06/24/2016 1:55 PM
 LOGIN: Canevaldi, David
 P:\Projects\B1600008\B160089-000\Design\Maine\B160089-000_M00-21_M00-21.dwg