

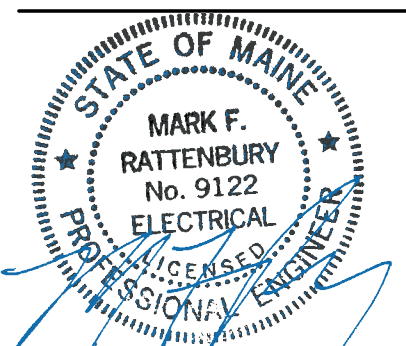


225 Franklin Street, Suite 1100  
Boston, MA 02110  
1617.478.0300  
1617.478.0321  
www.perkinswill.com

**CONSULTANTS**

**AKF GROUP LLC**  
99 Bedford St., 2nd Floor  
Boston, MA 02111  
1617.737.1111  
1617.737.4311

**STRUCTURAL  
SGH INC.**  
41 Seyon St.  
Waltham, MA 02453  
1781.907.9000  
1781.907.9009



**PROJECT**

**ACCU  
RELOCATION**  
22 Bramhall Street  
Portland, Maine 04102



**MAINE MEDICAL  
CENTER**  
22 Bramhall Street  
Portland, Maine 04102

06.24.2016

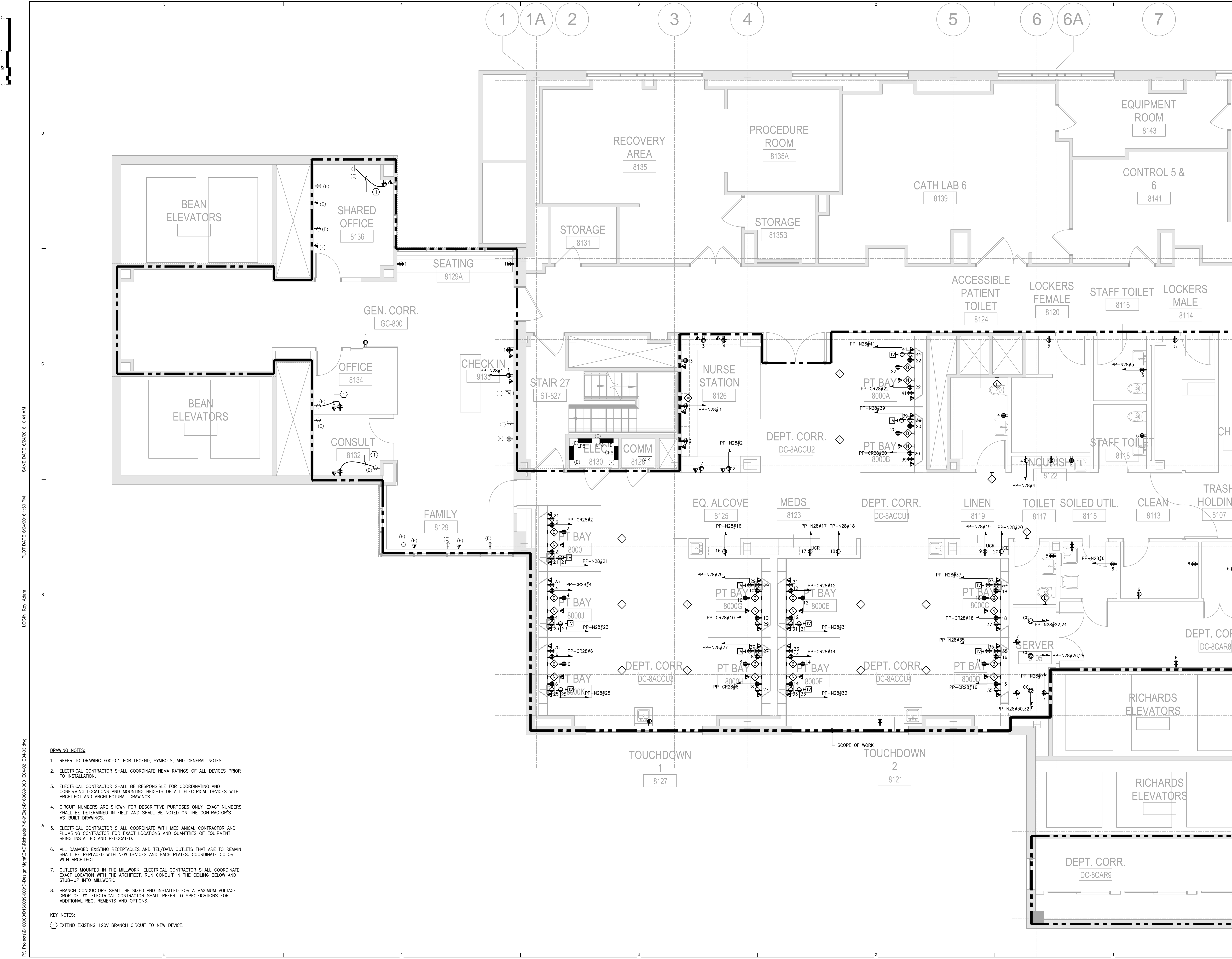
**ISSUE CHART**

NO.	ISSUE	DATE
1	ISSUED FOR PERMIT	06.24.2016
2	Job Number	B160089-000
3	Checked	MFR
4	Approved	

**TITLE**  
**RICHARDS 8 -  
ELECTRICAL  
POWER  
PLAN - WEST**  
SHEET NUMBER

**E04-02**

Copyright © 2016 Perkins+Will



- DRAWING NOTES:**
- REFER TO DRAWING E00-01 FOR LEGEND, SYMBOLS, AND GENERAL NOTES.
  - ELECTRICAL CONTRACTOR SHALL COORDINATE NEMA RATINGS OF ALL DEVICES PRIOR TO INSTALLATION.
  - ELECTRICAL CONTRACTOR SHALL BE RESPONSIBLE FOR COORDINATING AND CONFIRMING LOCATIONS AND MOUNTING HEIGHTS OF ALL ELECTRICAL DEVICES WITH ARCHITECT AND ARCHITECTURAL DRAWINGS.
  - CIRCUIT NUMBERS ARE SHOWN FOR DESCRIPTIVE PURPOSES ONLY. EXACT NUMBERS SHALL BE DETERMINED IN FIELD AND SHALL BE NOTED ON THE CONTRACTOR'S AS-BUILT DRAWINGS.
  - ELECTRICAL CONTRACTOR SHALL COORDINATE WITH MECHANICAL CONTRACTOR AND PLUMBING CONTRACTOR FOR EXACT LOCATIONS AND QUANTITIES OF EQUIPMENT BEING INSTALLED AND RELOCATED.
  - ALL DAMAGED EXISTING RECEPTACLES AND TEL/DATA OUTLETS THAT ARE TO REMAIN SHALL BE REPLACED WITH NEW DEVICES AND FACE PLATES. COORDINATE COLOR WITH ARCHITECT.
  - OUTLETS MOUNTED IN THE MILLWORK. ELECTRICAL CONTRACTOR SHALL COORDINATE EXACT LOCATION WITH THE ARCHITECT. RUN CONDUIT IN THE CEILING BELOW AND STUB-UP INTO MILLWORK.
  - BRANCH CONDUCTORS SHALL BE SIZED AND INSTALLED FOR A MAXIMUM VOLTAGE DROP OF 3%. ELECTRICAL CONTRACTOR SHALL REFER TO SPECIFICATIONS FOR ADDITIONAL REQUIREMENTS AND OPTIONS.

- KEY NOTES:**
- ① EXTEND EXISTING 120V BRANCH CIRCUIT TO NEW DEVICE.

SAVE DATE: 06/24/2016 10:41 AM  
 PLOT DATE: 06/24/2016 1:50 PM  
 LOGIN: Roy, Adam  
 PL: Projects\B1600089\B160089-000\Design\Main\CD\Richards 7-8\Richards 8 - West\B160089-000\_E04-02\_E04-02.dwg