

0 1 2 3 4

SAVE DATE: 06/24/2016 1:05 PM
PLOT DATE: 06/24/2016 1:05 PM
LOGIN: Roy, Adam

PL: Projects\B16000081\60089-000\Design\Main\CAD\Richards 7-9\Elec\B160089-000_E04-01.dwg

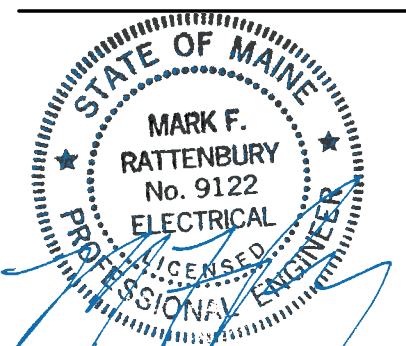


225 Franklin Street, Suite 1100
Boston, MA 02110
1617.478.0300
1617.478.0321
www.perkinswill.com

CONSULTANTS

AKF GROUP LLC
MEFPF
99 Bedford St., 2nd Floor
Boston, MA 02111
1617.737.1111
1617.737.4311

**STRUCTURAL
SGH INC.**
41 Seyon St.
Waltham, MA 02453
1781.907.9000
1781.907.9009



PROJECT

**ACCU
RELOCATION**
22 Bramhall Street
Portland, Maine 04102



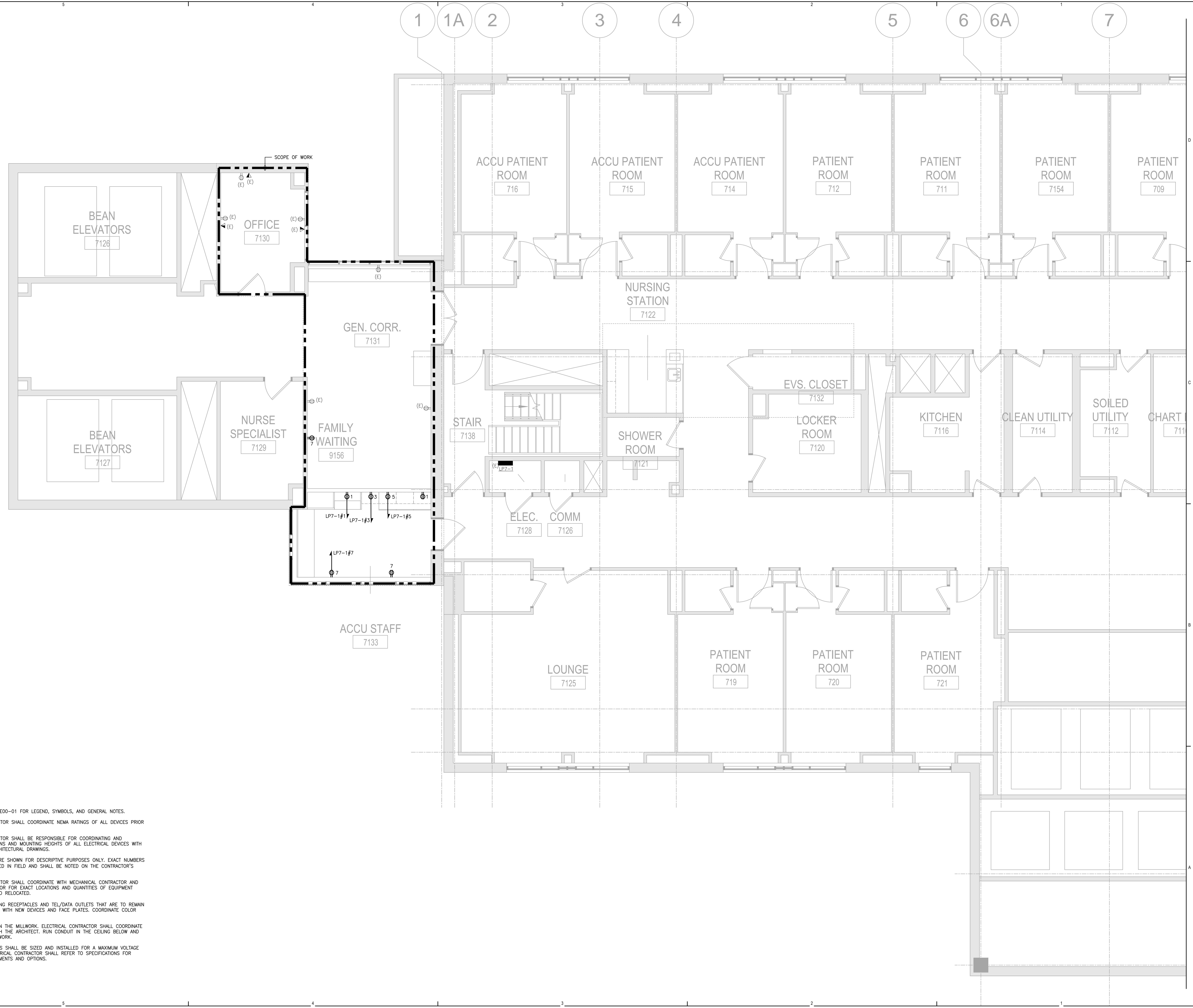
**MAINE MEDICAL
CENTER**
22 Bramhall Street
Portland, Maine 04102

06.24.2016
ISSUE CHART

NO.	ISSUE	DATE
ISSUED FOR PERMIT		06.24.2016
Job Number	B160089-000	
Checked	MFR	
Approved		

TITLE
**RICHARDS 7 -
ELECTRICAL
POWER
PLAN - WEST**
SHEET NUMBER
E04-01

Copyright © 2016 Perkins+Will



- DRAWING NOTES:**
- REFER TO DRAWING E00-01 FOR LEGEND, SYMBOLS, AND GENERAL NOTES.
 - ELECTRICAL CONTRACTOR SHALL COORDINATE NEMA RATINGS OF ALL DEVICES PRIOR TO INSTALLATION.
 - ELECTRICAL CONTRACTOR SHALL BE RESPONSIBLE FOR COORDINATING AND CONFIRMING LOCATIONS AND MOUNTING HEIGHTS OF ALL ELECTRICAL DEVICES WITH ARCHITECT AND ARCHITECTURAL DRAWINGS.
 - CIRCUIT NUMBERS ARE SHOWN FOR DESCRIPTIVE PURPOSES ONLY. EXACT NUMBERS SHALL BE DETERMINED IN FIELD AND SHALL BE NOTED ON THE CONTRACTOR'S AS-BUILT DRAWINGS.
 - ELECTRICAL CONTRACTOR SHALL COORDINATE WITH MECHANICAL CONTRACTOR AND PLUMBING CONTRACTOR FOR EXACT LOCATIONS AND QUANTITIES OF EQUIPMENT BEING INSTALLED AND RELOCATED.
 - ALL DAMAGED EXISTING RECEPTACLES AND TEL/DATA OUTLETS THAT ARE TO REMAIN SHALL BE REPLACED WITH NEW DEVICES AND FACE PLATES. COORDINATE COLOR WITH ARCHITECT.
 - OUTLETS MOUNTED IN THE MILLWORK. ELECTRICAL CONTRACTOR SHALL COORDINATE EXACT LOCATION WITH THE ARCHITECT. RUN CONDUIT IN THE CEILING BELOW AND STUB-UP INTO MILLWORK.
 - BRANCH CONDUCTORS SHALL BE SIZED AND INSTALLED FOR A MAXIMUM VOLTAGE DROP OF 3%. ELECTRICAL CONTRACTOR SHALL REFER TO SPECIFICATIONS FOR ADDITIONAL REQUIREMENTS AND OPTIONS.