

CONSULTANTS

MEPP
AKF GROUP LLC
99 Bradford Street, 2nd Floor
Boston, MA 02211
1617.737.1111
1617.737.4311

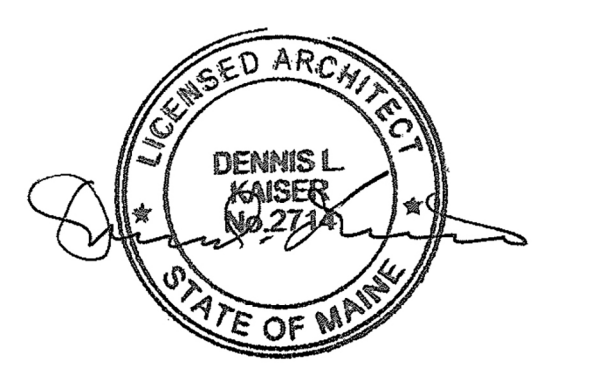
STRUCTURAL
SGH INC.
41 Seyon St.
Waltham, MA 02453
1781.907.9000
1781.907.9009

PROJECT

**ACCU
RELOCATION**
22 Bramhall Street
Portland, Maine 04102



**MAINE MEDICAL
CENTER**
22 Bramhall Street
Portland, Maine 04102



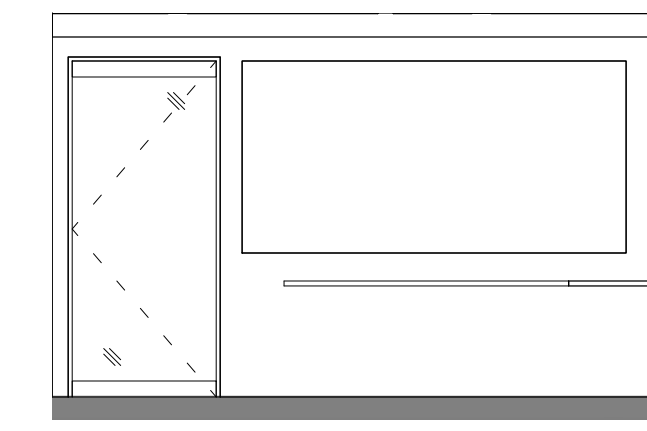
06.24.2016
ISSUE CHART

NO.	ISSUE	DATE
1	ISSUED FOR PERMIT	06.24.2016
2	ISSUE	152168.029

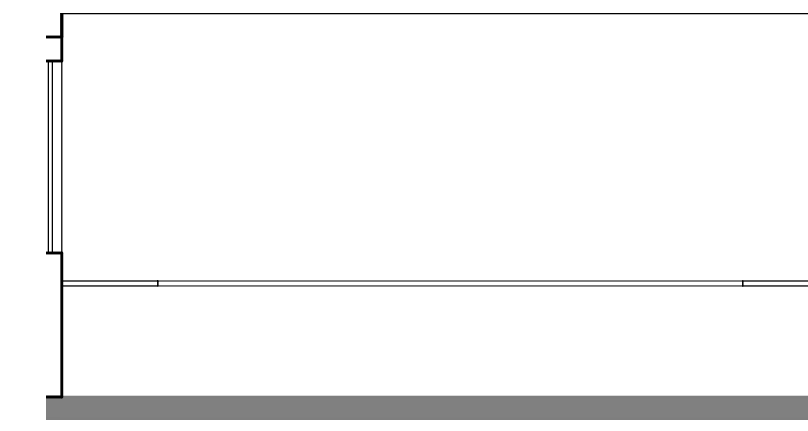
Checked _____
Approved _____
Approver _____

TITLE
**RICHARDS 8 -
INTERIOR
ELEVATIONS -
CATH**

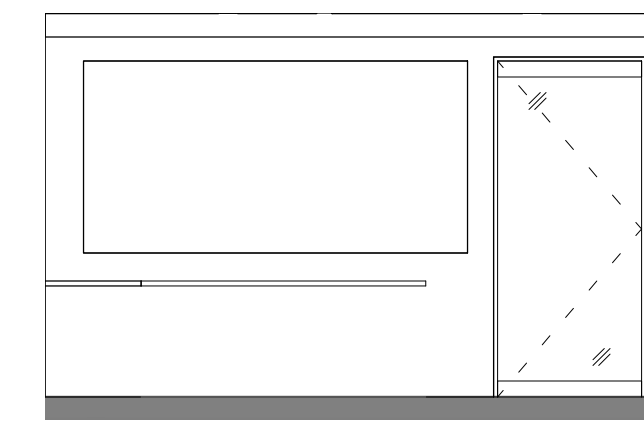
SHEET NUMBER
A45-23



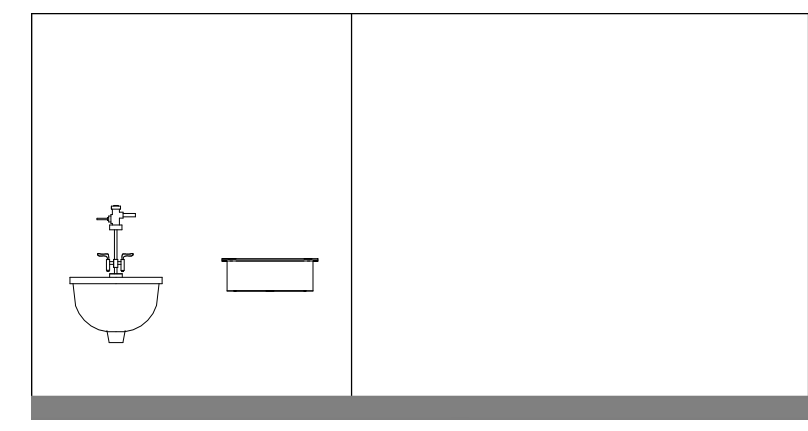
11 PHYSICIAN'S READING SOUTH
1/4" = 1'-0"



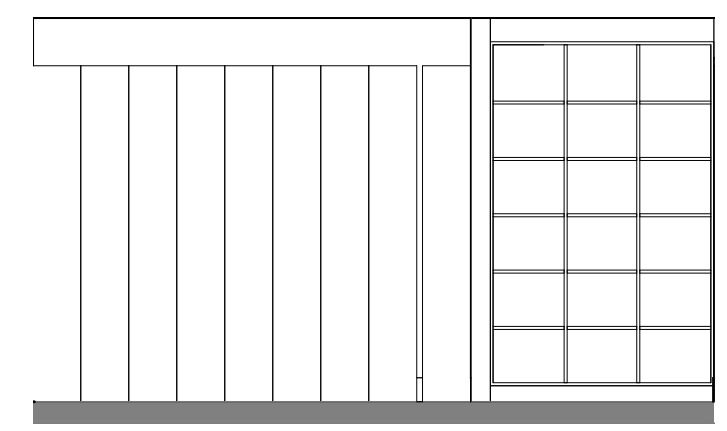
10 PHYSICIAN'S READING WEST
1/4" = 1'-0"



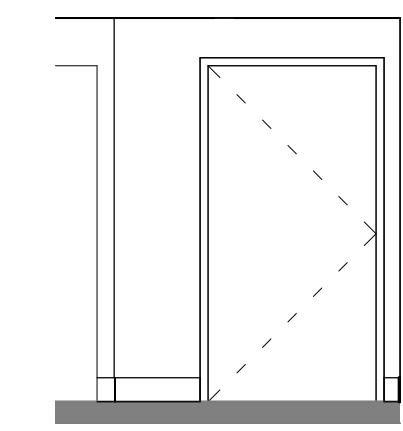
9 PHYSICIAN'S READING NORTH
1/4" = 1'-0"



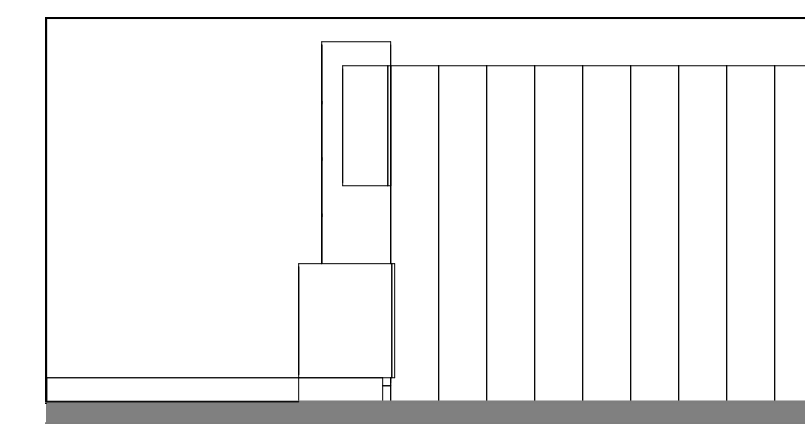
12 CATH SOILED UTILITY - EAST
1/4" = 1'-0"



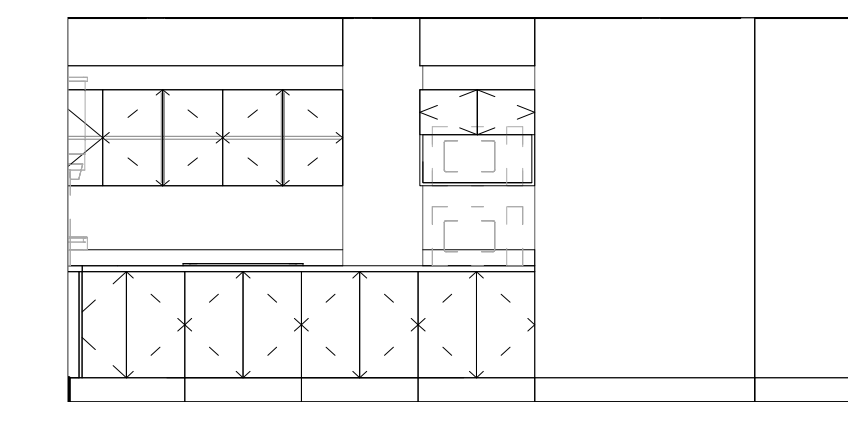
16 FEMALE LOCKERS - WEST
1/4" = 1'-0"



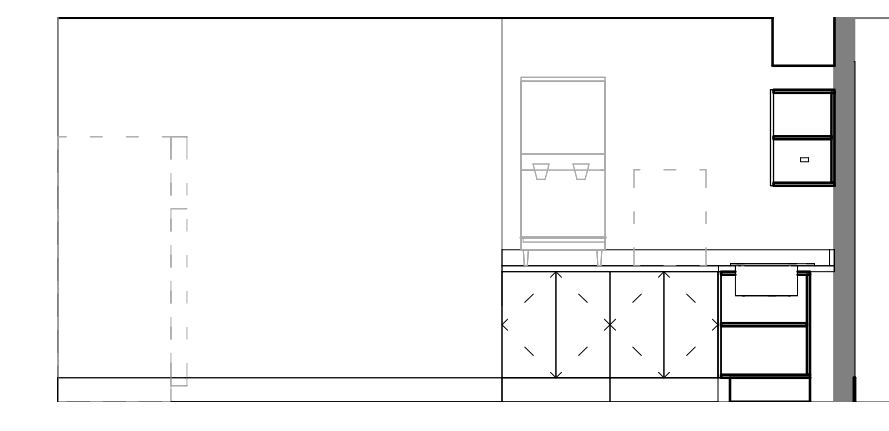
14 MALE LOCKERS - NORTH
1/4" = 1'-0"



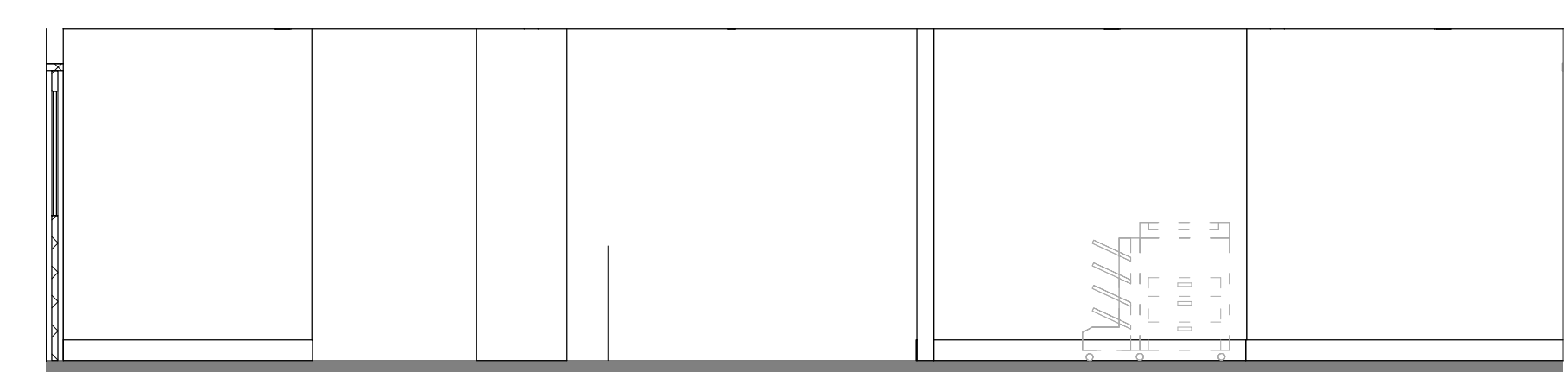
13 MALE LOCKERS - EAST
1/4" = 1'-0"



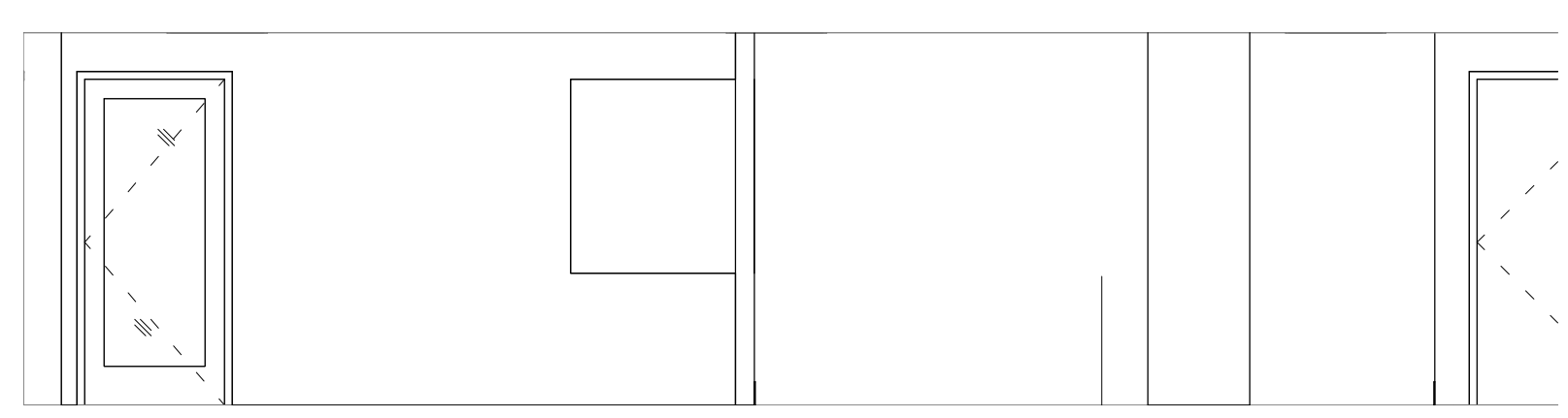
8 CATH STAFF LOUNGE - SOUTH
1/4" = 1'-0"



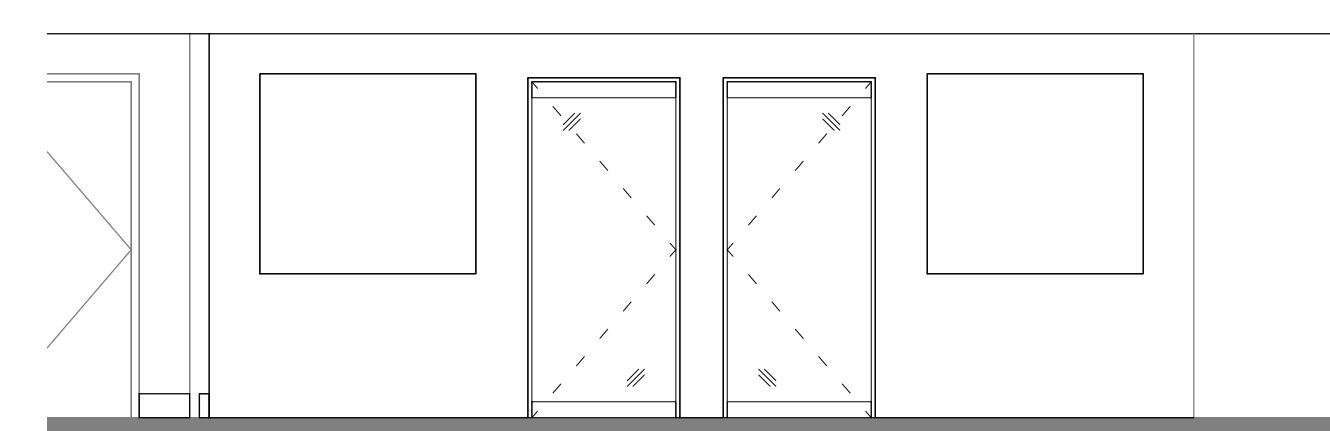
5 CATH STAFF LOUNGE - EAST
1/4" = 1'-0"



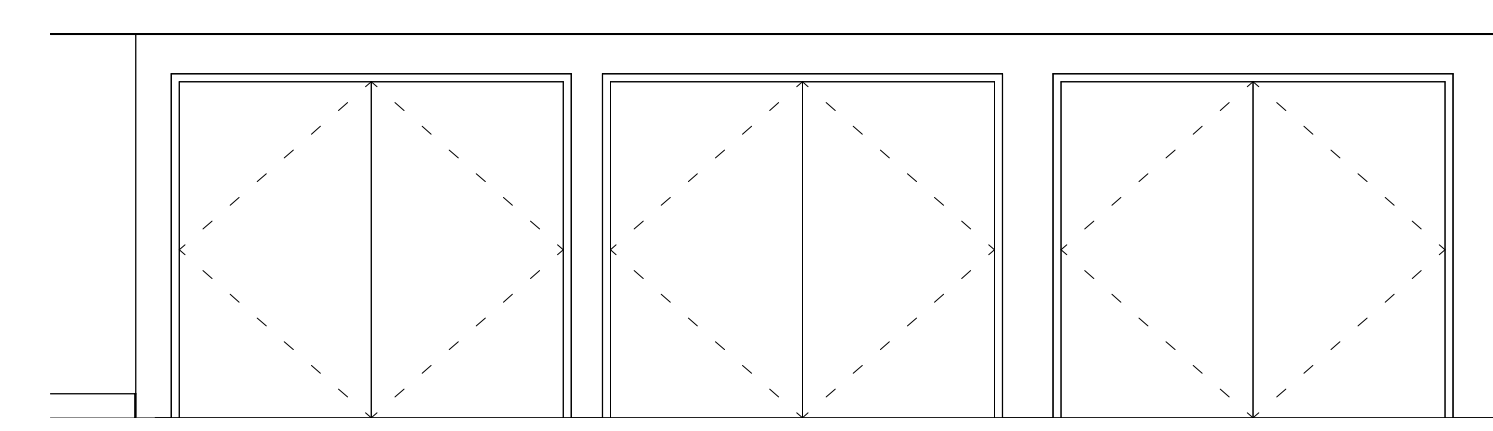
15 INFLOW AND STAFF LOUNGE
1/4" = 1'-0"



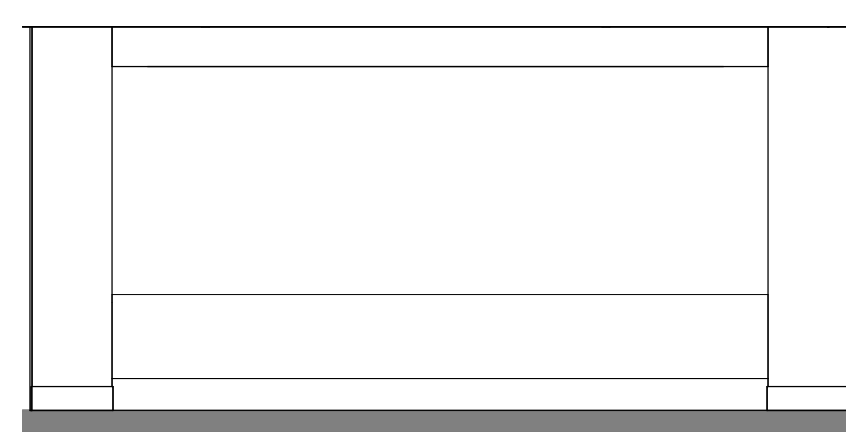
17 INFLOW AND STAFF LOUNGE 2
1/4" = 1'-0"



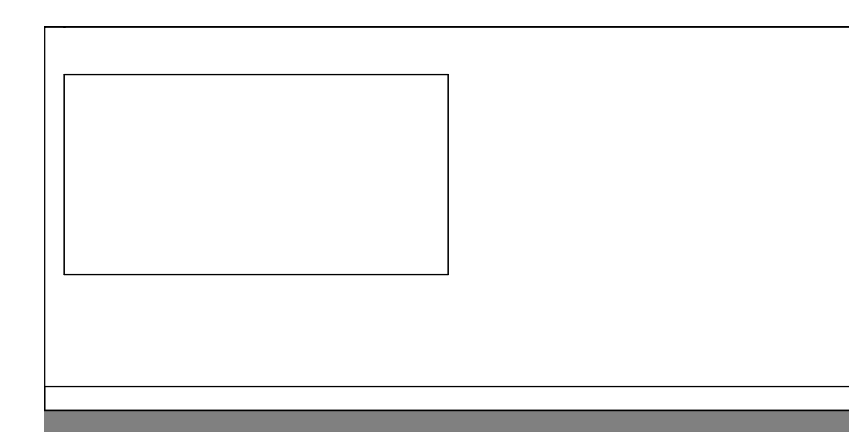
7 CONSULT ROOMS
1/4" = 1'-0"



18 CORRIDOR STRETCHER STORAGE
1/4" = 1'-0"



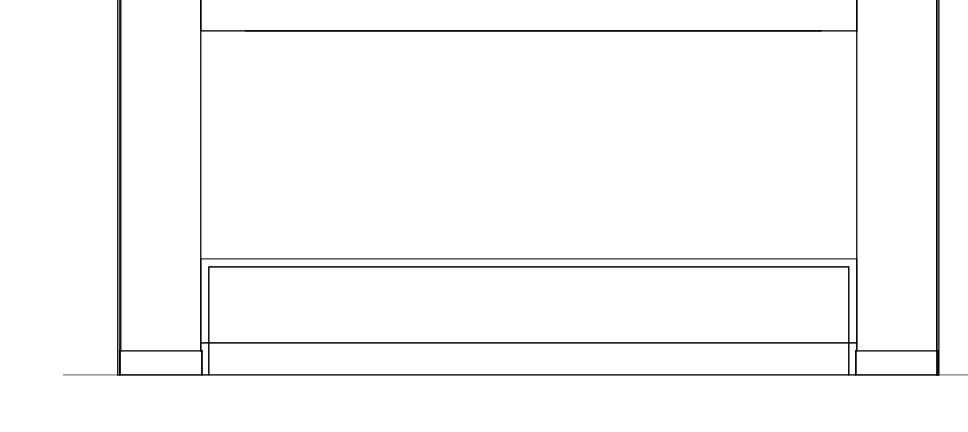
4 CORRIDOR DC-8CAR05 - WEST
1/4" = 1'-0"



3 CORRIDOR DC-8CAR05 - EAST
1/4" = 1'-0"



2 CATH CHECK-IN - WEST
1/4" = 1'-0"



1 CATH CHECK-IN - EAST
1/4" = 1'-0"