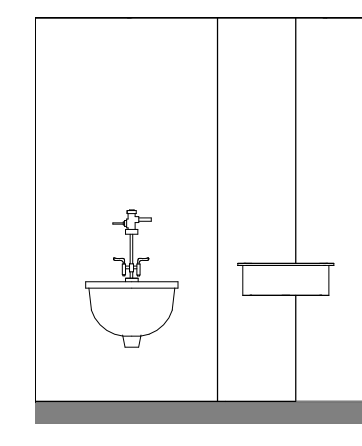


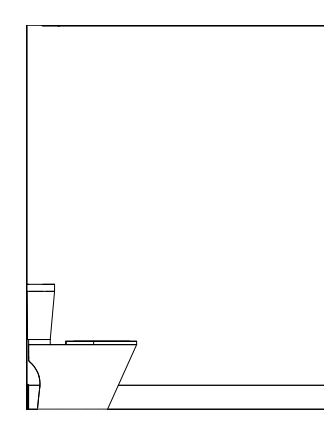
CONSULTANTS

MEPP
AKF GROUP LLC
99 Bradford Street, 2nd Floor
Boston, MA 02211
1617.737.1111
1617.737.4311

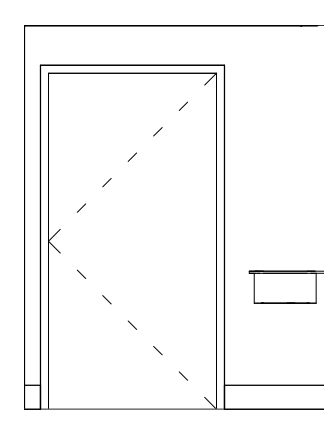
STRUCTURAL
SGH INC.
41 Seyon St.
Waltham, MA 02453
1781.907.9000
1781.907.9009



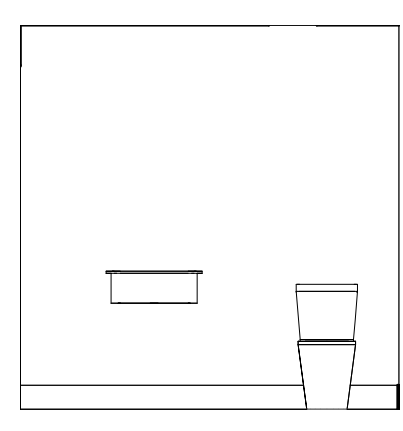
18 ACCU SOILED - WEST
1/4" = 1'-0"



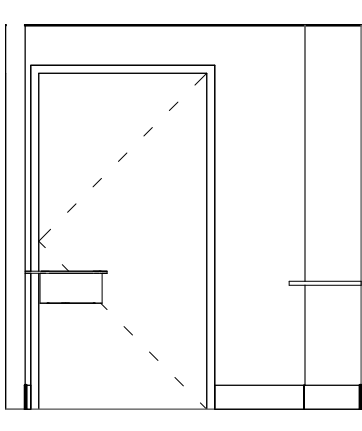
14 STAFF TOILET - OPP ENTRANCE
1/4" = 1'-0"



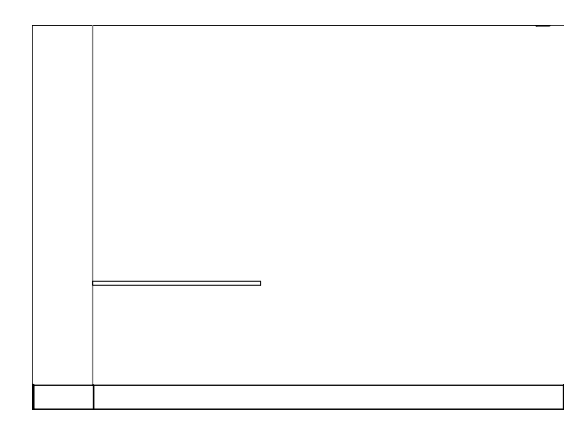
12 STAF TOILET - ENTRANCE
1/4" = 1'-0"



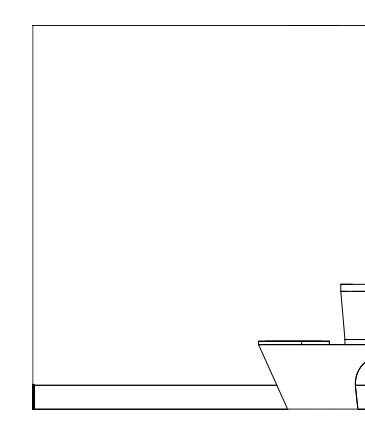
11 STAFF TOILET - WET WALL
1/4" = 1'-0"



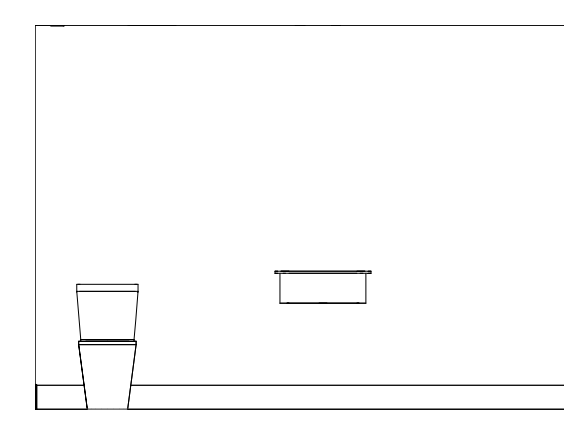
10 ACCU ACC. TOILET - SOUTH
1/4" = 1'-0"



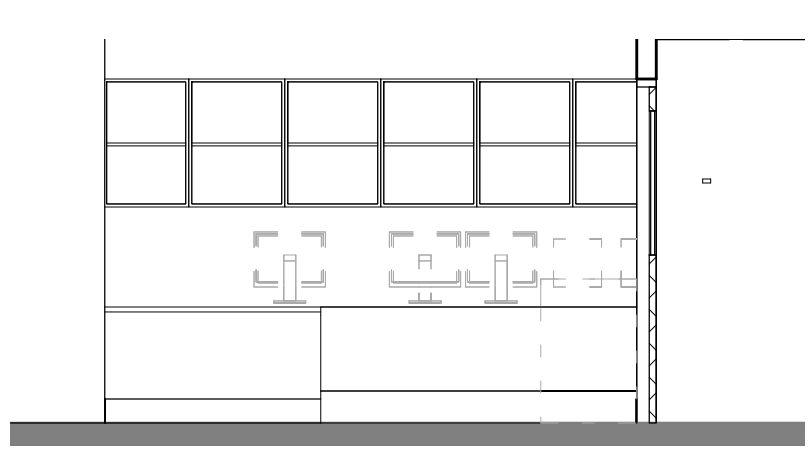
9 ACCU ACC. TOILET - WEST
1/4" = 1'-0"



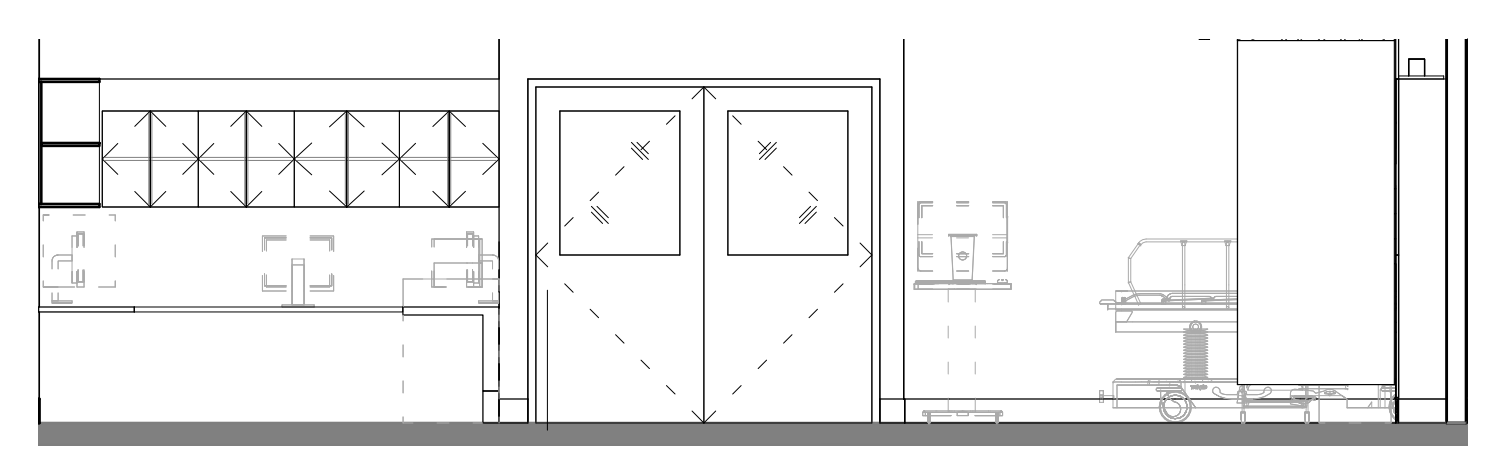
8 ACCU ACC. TOILET - NORTH
1/4" = 1'-0"



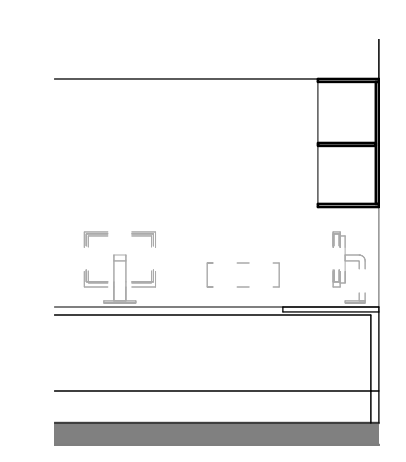
7 ACCU ACC. TOILET - EAST
1/4" = 1'-0"



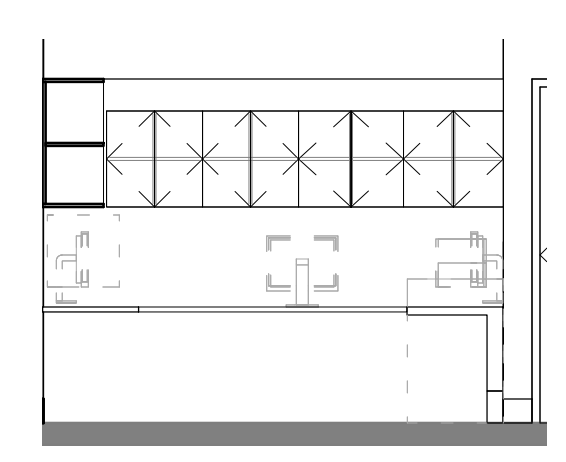
19 CORRIDOR DC-8ACCU2 - WEST - NURSE STATION
1/4" = 1'-0"



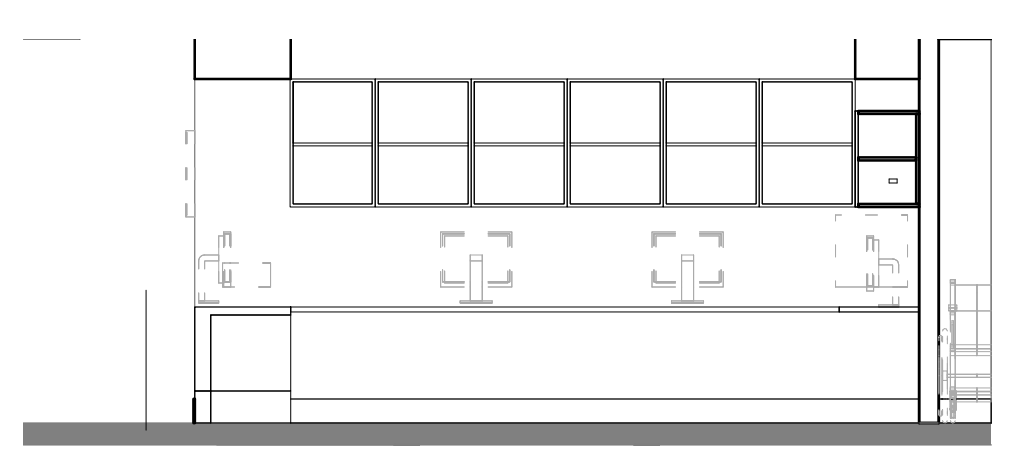
17 R8 CHARTING NORTH
1/4" = 1'-0"



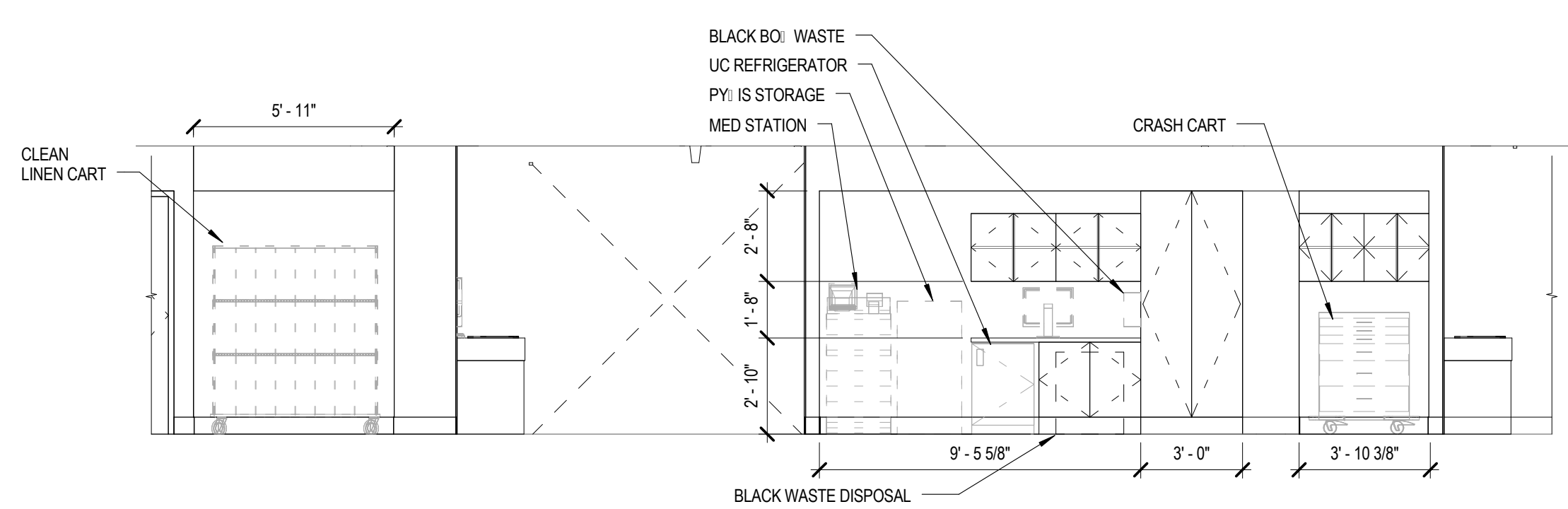
13 R8 NURSE STATION SOUTH
1/4" = 1'-0"



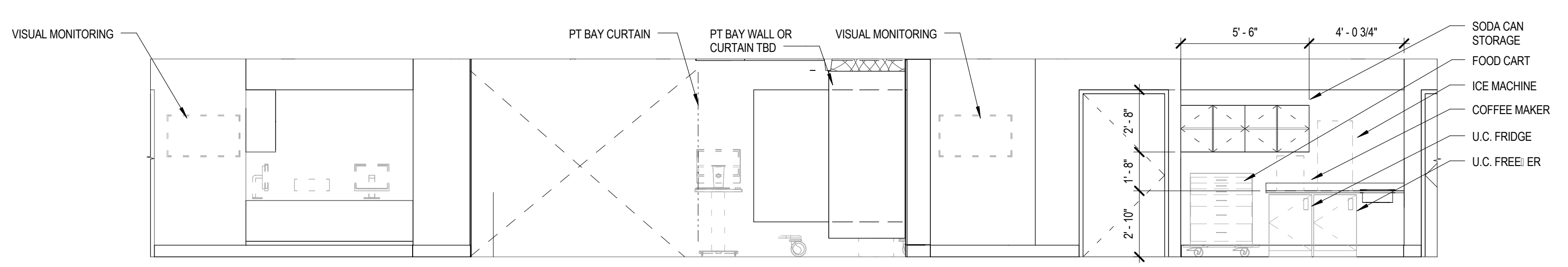
2 R8 NURSE STATION - NORTH
1/4" = 1'-0"



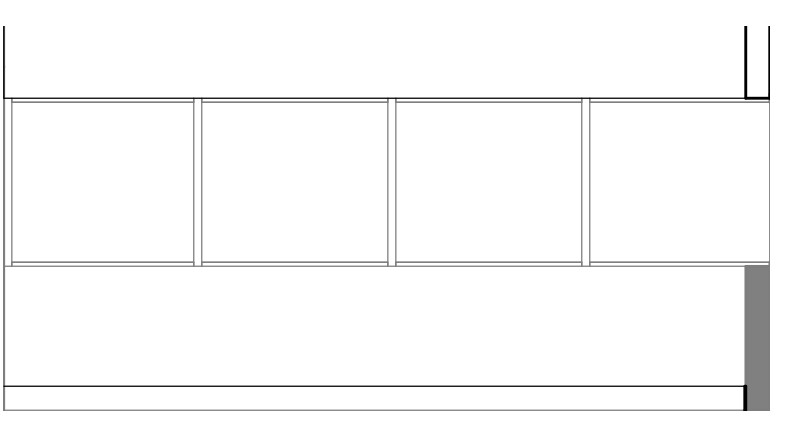
1 R8 NURSE STATION & CHARTING - WEST
1/4" = 1'-0"



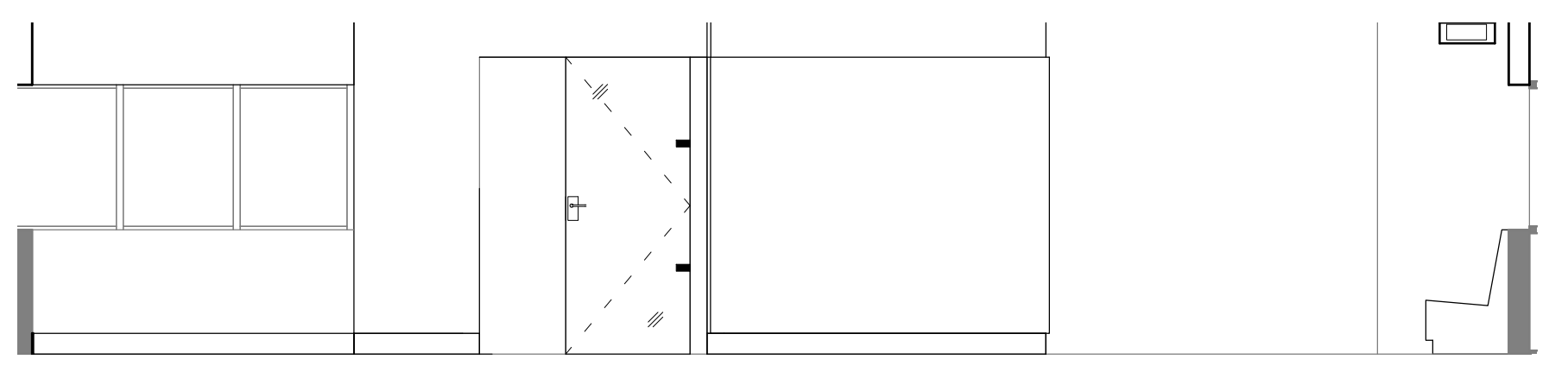
16 CORRIDOR DC-ACCU1 - SOUTH
1/4" = 1'-0"



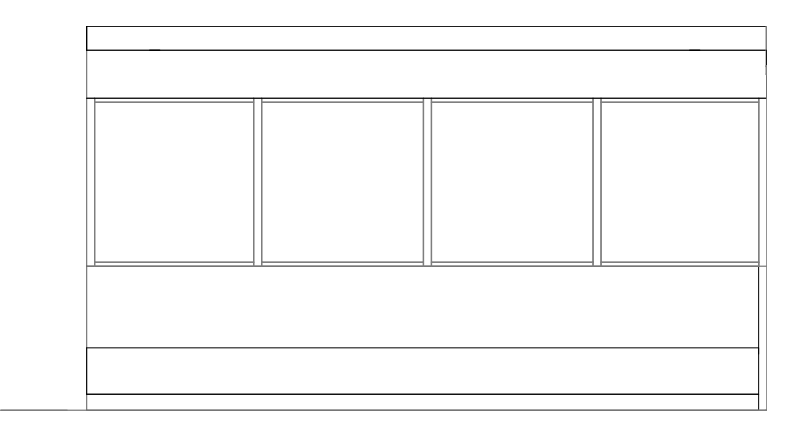
15 CORRIDOR DC-ACCU1 - NORTH
1/4" = 1'-0"



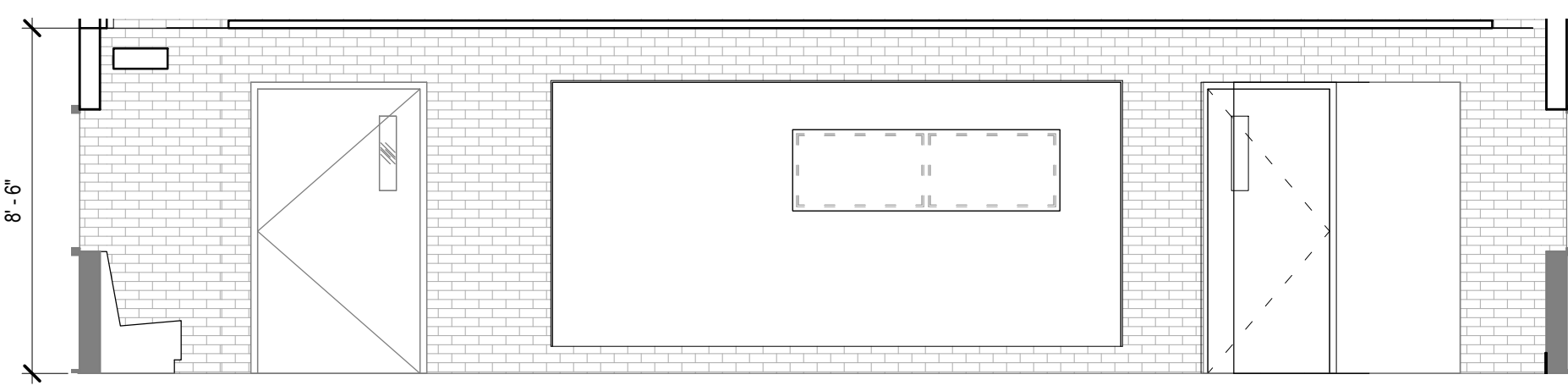
6 ACCU FAMILY - SOUTH
1/4" = 1'-0"



5 ACCU FAMILY - WEST
1/4" = 1'-0"



4 ACCU FAMILY - NORTH
1/4" = 1'-0"



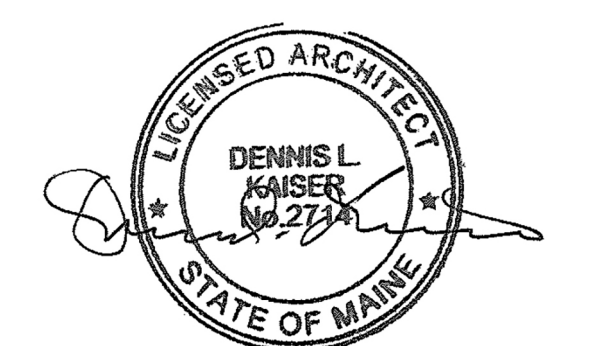
3 ACCU FAMILY - EAST
1/4" = 1'-0"

PROJECT

**ACCU
RELOCATION**
22 Bramhall Street
Portland, Maine 04102



**MAINE MEDICAL
CENTER**
22 Bramhall Street
Portland, Maine 04102



06.24.2016
ISSUE CHART

NO.	ISSUE	DATE
1	ISSUED FOR PERMIT	06.24.2016
2	ISSUE	DATE

Job Number 152168.029
Checked _____ Checker _____
Approved _____ Approver _____

TITLE
**RICHARDS 8 -
INTERIOR
ELEVATIONS -
ACCU**

SHEET NUMBER
A45-22