

**CONSULTANTS**

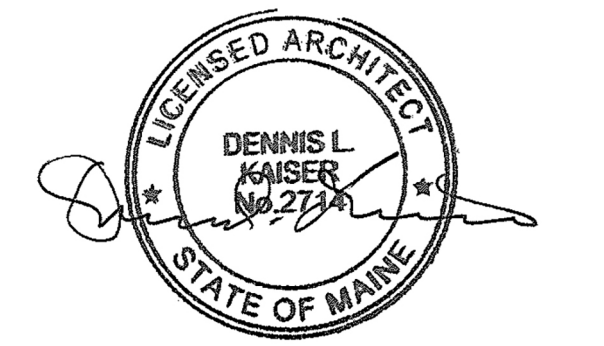
**AKF GROUP LLC**  
99 Bradford Street, 2nd Floor  
Boston, MA 02211  
1617.737.1111  
1617.737.4311

**SGH INC.**  
41 Sevon St.  
Waltham, MA 02453  
1781.907.9000  
1781.907.9009

**PROJECT**  
**ACCU RELOCATION**  
22 Bramhall Street  
Portland, Maine 04102

**Maine Medical Center**  
MaineHealth

**MAINE MEDICAL CENTER**  
22 Bramhall Street  
Portland, Maine 04102



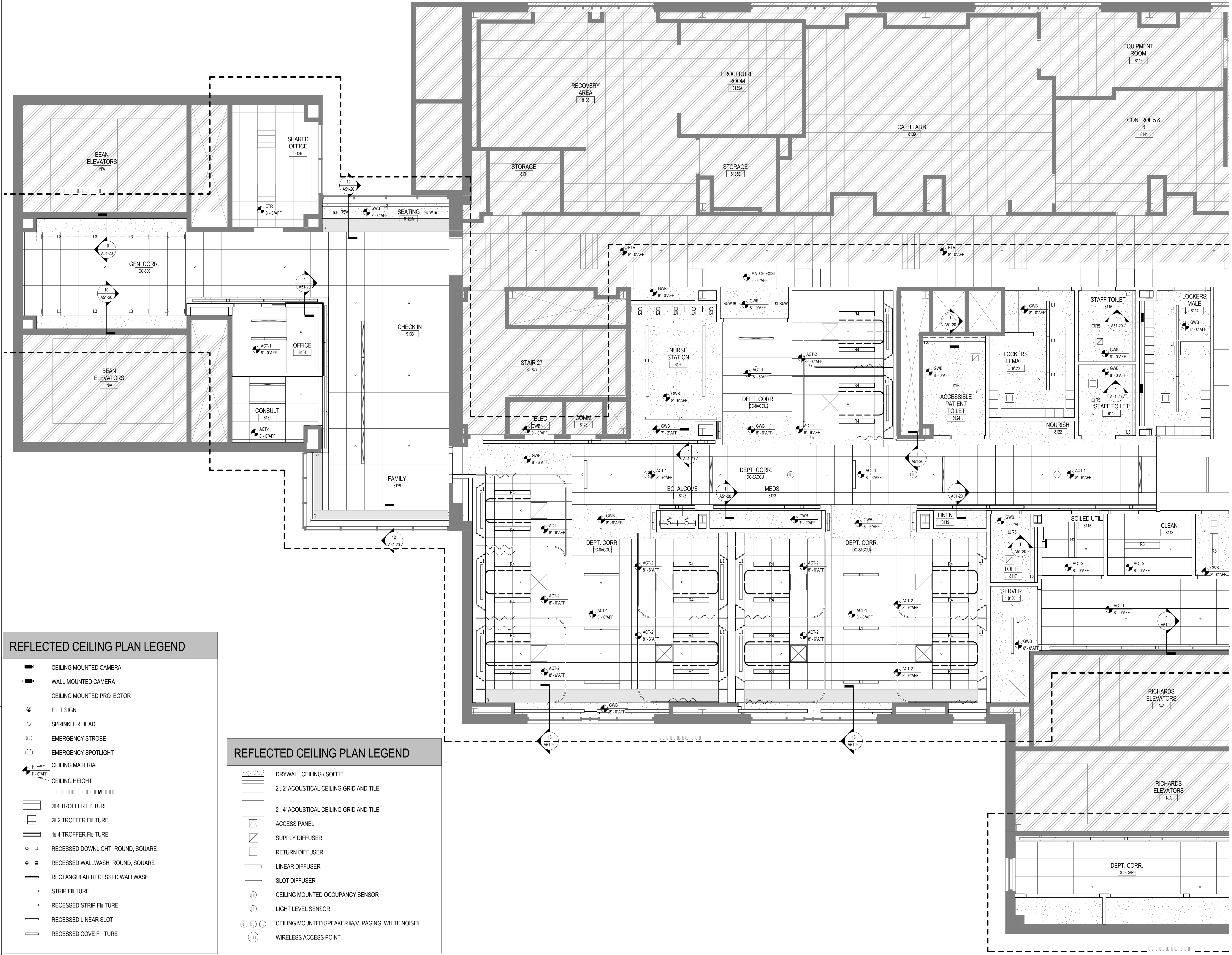
06.24.2016  
**ISSUE CHART**

NO.	ISSUE	DATE
1	ISSUED FOR PERMIT	06.24.2016
2	ISSUE	06.24.2016

Job Number 152168.029  
Checked \_\_\_\_\_  
Approved \_\_\_\_\_

**TITLE**  
**RICHARDS 8 - ENLARGED RCP - WEST**

**SHEET NUMBER**  
**A12-30**



**REFLECTED CEILING PLAN LEGEND**

- CEILING MOUNTED CAMERA
- WALL MOUNTED CAMERA
- CEILING MOUNTED PROJECTOR
- IT SIGN
- SPRINKLER HEAD
- EMERGENCY STROBE
- EMERGENCY SPOTLIGHT
- CEILING MATERIAL
- CEILING HEIGHT
- 2:4 TROFFER FIXTURE
- 2:2 TROFFER FIXTURE
- 1:4 TROFFER FIXTURE
- RECESSED DOWNLIGHT (ROUND, SQUARE)
- RECESSED WALLWASH (ROUND, SQUARE)
- RECTANGULAR RECESSED WALLWASH
- STRIP FIXTURE
- RECESSED STRIP FIXTURE
- RECESSED LINEAR SLOT
- RECESSED COVE FIXTURE

**REFLECTED CEILING PLAN LEGEND**

- DRYWALL CEILING / SOFFIT
- 2:1 ACOUSTICAL CEILING GRID AND TILE
- 2:1 ACOUSTICAL CEILING GRID AND TILE
- ACCESS PANEL
- SUPPLY DIFFUSER
- RETURN DIFFUSER
- LINEAR DIFFUSER
- SLOT DIFFUSER
- CEILING MOUNTED OCCUPANCY SENSOR
- LIGHT LEVEL SENSOR
- CEILING MOUNTED SPEAKER (AV, PAGING, WHITE NOISE)
- WIRELESS ACCESS POINT