

**CONSULTANTS**

**AKF GROUP LLC**  
99 Bradford Street, 2nd Floor  
Boston, MA 02211  
1617.737.1111  
1617.737.4311

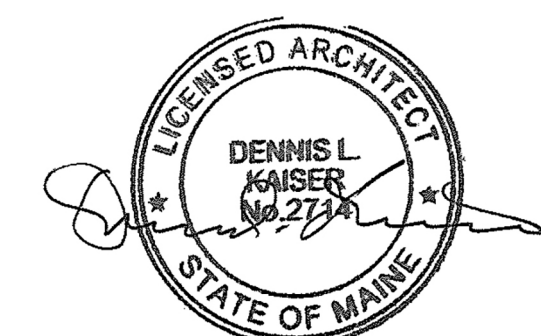
**SGH INC.**  
41 Severn St.  
Waltham, MA 02453  
1781.907.9000  
1781.907.9009

**PROJECT**

**ACCU  
RELOCATION**  
22 Bramhall Street  
Portland, Maine 04102

**Maine Medical Center**  
MaineHealth

**MAINE MEDICAL  
CENTER**  
22 Bramhall Street  
Portland, Maine 04102



06.24.2016

**ISSUE CHART**

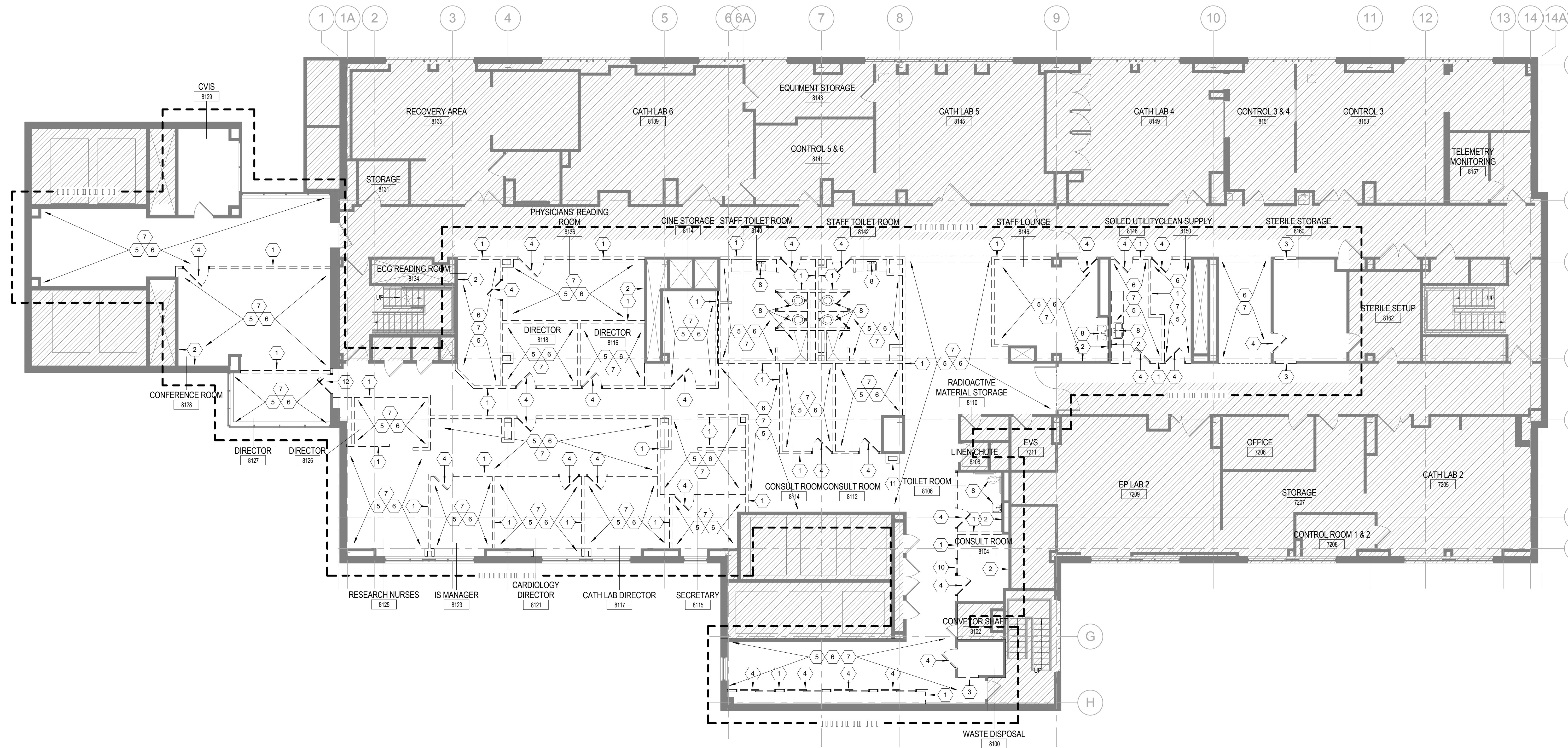
NO.	ISSUE	DATE
1	ISSUED FOR PERMIT	06.24.2016
2	ISSUE	DATE
3	Job Number	152168.029
4	Checked	
5	Approved	

**TITLE**

**DEMOLITION PLAN  
RICHARDS 8**

**SHEET NUMBER**

**A04-21**



**1 DEMOLITION PLAN RICHARDS 8**  
1/8" = 1'-0"

**DEMOLITION KEYNOTES**

- 1 REMOVE EXISTING PARTITIONS IN THEIR ENTIRETY, INCLUDING ALL FINISHES, WALL MOUNTED FITURES, AND ANCHORS.
- 2 REMOVE FINISH OF EXISTING PARTITION FOR INDICATED SIDE TO FACILITATE INSTALLATION OF NEW SYSTEMS IN PARTITION INCLUDING GWB.
- 3 REMOVE PORTION OF PARTITION TO FACILITATE INSTALLATION OF OPENING.
- 4 REMOVE DOOR, FRAME, GLAZING, AND ALL ASSOCIATED MATERIAL INCLUDING THRESHOLDS, CORNER GUARDS, CARD READERS, TYPICAL AS DESIGNATED. SALVAGE AS DIRECTED BY OWNER.
- 5 REMOVE EXISTING CASEWORK, MILLWORK, SHELVING, HARDWARE AND/OR ACCESSORIES.
- 6 REMOVE AND DISPOSE OF FLOORING AND ALL ASSOCIATED MATERIALS SUCH AS MASTICS, GLUES, AND OTHER ADHESIVES. REMOVE AND DISPOSE OF ALL FLOOR TILE, COVE BASE ETC. GC TO COORDINATE THE PREPARATION OF EXISTING SLAB TO INCLUDE SANDING, GRINDING, AND LEVELING AS REQUIRED FOR PROPER INSTALLATION OF NEW FLOOR FINISHES.
- 7 REMOVE AND DISPOSE OF ALL CEILING SYSTEMS AND ASSOCIATED PARTS INCLUDING BUT NOT LIMITED TO AC, FRAMING, CLIPS, FASTENERS, GWB, INSULATION, LIGHTING FITURES & DIFFUSERS. COORDINATE WITH OWNER.
- 8 REMOVE EXISTING PLUMBING FITURES. SALVAGE AS DIRECTED BY OWNER.
- 9 REMOVE EXISTING WINDOW COVERINGS.
- 10 REMOVE INTERIOR WINDOW, FRAME, GLAZING, AND ALL ASSOCIATED MATERIAL. SALVAGE AS DIRECTED BY OWNER.
- 11 REMOVE EXISTING WATER FOUNTAIN. RELOCATE AS DIRECTED.
- 12 DOOR, FRAME, GLAZING, AND ALL ASSOCIATED MATERIAL INCLUDING THRESHOLDS, CORNER GUARDS, AND CARD READERS TO BE RELOCATED. COORDINATE WITH NEW WORK FOR NEW LOCATION.

**DEMOLITION PLAN LEGEND**

- EXISTING PARTITION TO REMAIN
- - - EXISTING PARTITION TO BE DEMOLISHED
- EXISTING DOOR AND FRAME TO REMAIN
- EXISTING DOOR AND FRAME TO BE DEMOLISHED
- LIMIT OF CEILING AND/OR FLOORING REMOVAL. REFER TO DEMO NOTES. COORDINATE WITH NEW WORK PLAN AND RCP.

**DEMOLITION PLAN GENERAL NOTES**

- 1 THE EXTENT OF THE DEMOLITION WORK INDICATED IN DRAWINGS AND NOTES DESCRIBE THE GENERAL SCOPE OF WORK ONLY AND ARE NOT INTENDED TO BE INCLUSIVE OF ALL THE DEMOLITION WORK WHICH MAY BE REQUIRED TO COMPLETE THE FULL SCOPE OF WORK. VERIFY ALL CONDITIONS IN THE FIELD.
- 2 EXISTING BUILDING ELEMENTS AND FITURES NOT INDICATED FOR REMOVAL ARE TO BE PROTECTED DURING DEMOLITION AND CONSTRUCTION AS REQUIRED. THE CONDITION OF ALL BUILDING FINISHES NOT TO BE ALTERED OR REMOVED ARE TO BE RECORDED PRIOR TO THE START OF DEMOLITION AND CONSTRUCTION.
- 3 SCHEDULE AND OBTAIN APPROVAL OF THE OWNER, UTILITIES AND LOCAL AGENCIES AUTHORITY PRIOR TO BEGINNING DEMOLITION WORK.
- 4 ALL DEMOLITION DEBRIS IS TO BE PLACED IN DUMPSTERS, COVERED, WETTED AND SECURED AS REQUIRED BY MUNICIPAL ORDINANCES PRIOR TO DISPOSAL. COORDINATE AND OBTAIN OWNERS APPROVAL FOR THE LOCATION OF DUMPSTERS.
- 5 EXISTING MECHANICAL, ELECTRICAL, AND PLUMBING SERVICES NOTED FOR REMOVAL ARE TO BE REMOVED IN THEIR ENTIRETY. PATCH FLOOR OR WALL PENETRATIONS SMOOTHLY AND FLUSH TO FORM A STRUCTURAL PATCH.
- 6 ALL PARTITIONS INDICATED TO BE REMOVED ARE TO BE COMPLETELY REMOVED FROM FLOOR DECK TO UNDERSIDE OF STRUCTURE.
- 7 FIRE PROTECTION SYSTEM ON FLOOR TO REMAIN ACTIVE DURING CONSTRUCTION. COORDINATE WITH OWNER FOR ANY INTERIM LIFE SAFETY REQUIREMENTS.
- 8 THE EXISTING STRUCTURE INCLUDING BUT NOT LIMITED TO COLUMNS, BEAMS AND FLOORS ARE NOT TO BE ALTERED OR DAMAGED DURING DEMOLITION OR CONSTRUCTION. CEPT WHERE INDICATED IN THE DRAWINGS. ANY STRUCTURAL ELEMENTS DAMAGED DURING DEMOLITION OR CONSTRUCTION ARE TO BE REPAIRED TO FULL STRUCTURAL INTEGRITY AND REQUIRED FIRE-RESISTIVE RATING BY THE CONTRACTOR AT OWNERS RISK.
- 9 ALL EXISTING BUILDING FINISHES, INDICATED TO REMAIN, WHICH ARE DISTURBED BY THE REQUIRED DEMOLITION ARE TO BE PATCHED AND REFINISHED TO MATCH ADJACENT CONDITIONS OR AS INDICATED IN THE FINISH SCHEDULE. P&M (PATCH AND MATCH) INDICATES THE FINISH SHALL BE REPAIRED TO MATCH ADJACENT FINISH.
- 10 AT THE CONCLUSION OF THE DEMOLITION WORK, REMOVE ALL DEBRIS AND SURPLUS MATERIALS AND LEAVE WORK AREA READY TO RECEIVE NEW WORK FINISHES.
- 11 PROVIDE DUST PROTECTION DURING CONSTRUCTION.
- 12 COORDINATE ITEMS FOR SALVAGE WITH OWNER.
- 13 IF ANY HAZARDOUS MATERIALS ARE IDENTIFIED DURING THE COURSE OF DEMOLITION, CONTRACTOR IS TO STOP WORK, NOTIFY THE OWNER, AND HAVE THE SPACE ABATED.